

TFEX Daily

3 เมษายน 2566

S50M23

แผนเทรด.....เน้นฝั่งซื้อ”

Gold spot

ขาขึ้นยังไม่จบ!

“แผนเทรด.....จ่อทะลุเส้น EMA 200”

S50M23

“ดัชนีจ่อทะลุเส้น EMA 200 วัน”

มุมมอง: ดัชนีจ่อทะลุตัวเส้น EMA 200 วัน บริเวณ 970 จุด ขณะที่ RSI เตรียมทะลุ 50 (ผ่านได้โครงสร้างจะกลับมาแข็งแกร่ง)

แผนเทรด... ฝั่งซื้อและซื้อกลับบริเวณโซนรับ 965 ลุ้นด้าน 975 จุด ในทางตรงข้ามสถานะขายและทยอยปิดเนื่องจากความเสี่ยงการเปลี่ยนแปลงโครงสร้างเป็นขาขึ้น

Note: เนื่องจากตลาด TFEX มีความผันผวนมาก หากขาดทุนมากกว่า 10% ของพอร์ต แนะนำปิดสถานะ

“Bullish Pennant....เตรียมตัวขึ้นรอบใหม่”

Gold spot

จับสัญญาณเทรด...ทองคำ

มุมมอง: Gold spot ขาขึ้นยังไม่จบง่ายๆ ภายหลังพักตัวอยู่ในกรอบสามเหลี่ยม “Bullish Pennant” เตรียมพร้อมขึ้น ขณะที่เครื่องมือวัดโมเมนตัม Stoch เตรียมตกลับขึ้น ช่วยยืนยันจุดกลับตัว

แผนเทรด...สถานะซื้อและซื้อเพิ่ม โซนรับ \$1950 ด้าน \$2,000 และ \$2,050/ออนซ์ ในทางตรงข้ามสถานะขายและทยอยปิดสถานะเนื่องจากความเสี่ยงการปรับตัวขึ้นทะลุ high

Note: ปิดความเสี่ยงหากผลตอบแทนติดลบมากกว่า 10% ของพอร์ต

วิกิจ ถาวรรัตนรัตน์

นักวิเคราะห์การลงทุนปัจจัยพื้นฐานด้านตลาดทุน/ปัจจัยทางเทคนิค

Wikij.tir@bualuang.co.th Tel. (662) 618-1336

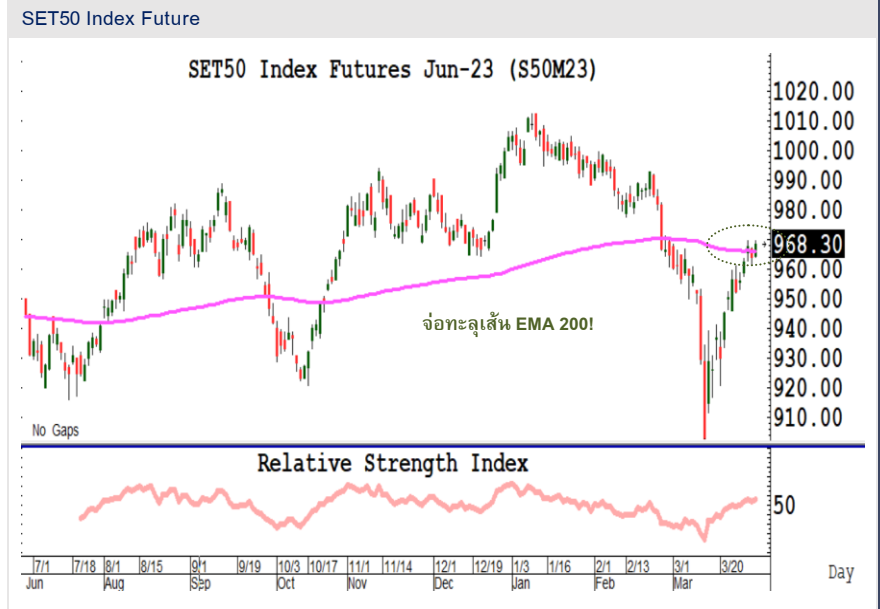
S50M23: รับ 965 ด้าน 975

GFJ23: รับ 31,500 ด้าน 33,000

มุมมองทางเทคนิค โดย คุณธนรัตน์ อิศรกุล
นักวิเคราะห์การลงทุนปัจจัยพื้นฐานด้านหลักทรัพย์และปัจจัยทางเทคนิค

Thanarut@bualuang.co.th

Tel. (662) 618-1334



SET50 Index Futures

หลักทรัพย์	เปิด	สูงสุด	ต่ำสุด	ปิด	เฉลี่ย	ราคาที่ใช้ชำระ ราคา	เปลี่ยนแปลง	ปริมาณ (สัญญา)	สถานะคงค้าง (สัญญา)
SET50	971.18	976.98	968.78	974.26	972.80	N/A	4.71	N/A	N/A
S50J23	967.20	970.20	967.2	970.00	968.90	970.00	5.5	37	173
S50K23	967.7	970.00	967.1	969.60	968.90	969.60	5.6	22	182
S50M23	964.6	969.70	964.2	968.30	967.00	968.30	4.4	140,556	379,661
S50U23	961	966.20	961	964.70	963.90	964.80	3.9	12,760	35,224
S50Z23	961	965.50	961	964.30	963.60	964.30	3.7	2,408	19,395
S50H24	962	963.00	960.4	961.50	961.50	961.80	2.2	1,003	666
Total								156,786	435,301

Source : SET Smart

Trading by Investor Type - SET50 Index Futures

5 วันย้อนหลัง

วันที่	นักลงทุนต่างประเทศ ปริมาณ			นักลงทุนสถาบัน ปริมาณ			นักลงทุนภายในประเทศ ปริมาณ			รวม	
	ซื้อ	ขาย	สุทธิ	ซื้อ	ขาย	สุทธิ	ซื้อ	ขาย	สุทธิ	ปริมาณ	สถานะคงค้าง
31/03/2023	85,071	47,558	37,513	25,016	31,609	-6,593	46,699	77,619	-30,920	156,786	435,301
30/03/2023	82,555	80,245	2,310	36,795	35,074	1,721	91,145	95,176	-4,031	210,495	541,915
29/03/2023	196,471	190,653	5,818	38,646	39,390	-744	81,989	87,063	-5,074	317,106	698,516
28/03/2023	330,975	313,466	17,509	55,689	61,191	-5,502	73,650	85,657	-12,007	460,314	725,918
27/03/2023	223,750	222,991	759	34,934	34,598	336	73,397	74,492	-1,095	332,081	696,593

4 เดือนย้อนหลัง

วันที่	นักลงทุนต่างประเทศ ปริมาณ			นักลงทุนสถาบัน ปริมาณ			นักลงทุนภายในประเทศ ปริมาณ			รวม	
	ซื้อ	ขาย	สุทธิ	ซื้อ	ขาย	สุทธิ	ซื้อ	ขาย	สุทธิ	ปริมาณ	สถานะคงค้าง
มี.ค. 2023	3,051,754	2,935,366	116,388	1,110,804	1,094,251	16,553	2,675,691	2,808,632	-132,941	6,838,249	435,301
ก.พ. 2023	1,468,424	1,592,263	-123,839	668,550	650,734	17,816	2,019,686	1,913,663	106,023	4,156,660	664,829
ม.ค. 2023	1,346,543	1,446,322	-99,779	678,348	675,116	3,232	1,994,379	1,897,832	96,547	4,019,270	673,734
ธ.ค. 2022	2,179,936	2,239,881	-59,945	738,467	749,419	-10,952	1,946,510	1,875,613	70,897	4,864,913	563,223

4 ไตรมาสย้อนหลัง

วันที่	นักลงทุนต่างประเทศ ปริมาณ			นักลงทุนสถาบัน ปริมาณ			นักลงทุนภายในประเทศ ปริมาณ			รวม	
	ซื้อ	ขาย	สุทธิ	ซื้อ	ขาย	สุทธิ	ซื้อ	ขาย	สุทธิ	ปริมาณ	สถานะคงค้าง
Q1/ 2023	5,866,721	5,973,951	-107,230	2,457,702	2,420,101	37,601	6,689,756	6,620,127	69,629	15,014,179	435,301
Q4/ 2022	5,773,579	5,666,820	106,759	2,433,982	2,462,801	-28,819	5,991,792	6,069,732	-77,940	14,199,353	563,223
Q3/ 2022	6,188,060	6,186,241	1,819	2,707,073	2,714,363	-7,290	6,950,031	6,944,560	5,471	15,845,164	495,136
Q2/ 2022	4,663,806	4,722,909	-59,103	2,045,996	2,038,871	7,125	5,380,581	5,328,603	51,978	12,090,383	414,186

Source : SET Smart

Metal Futures

หลักทรัพย์	เปิด	สูงสุด	ต่ำสุด	ปิด	เฉลี่ย	ราคาที่ใช้ชำระ ราคา	เปลี่ยนแปลง	ปริมาณ (สัญญา)	สถานะคงค้าง (สัญญา)
GF10J23	32,030	32,230	31,930	32,190	32,102	32,210.00	180	3186	5,166
GFJ23	32,070	32,210	31,940	32,210	32,111	32,210.00	190	89	208
GF10M23	32,090	32,270	32,000	32,250	32,162	32,250.00	160	2976	6,205
GFM23	32,080	32,240	32,080	32,240	32,174	32,240.00	170	34	223
GOM23	1,996	2,012	1,991	2,007	2,002	2,006.90	11.8	41609	18,133
SVFM23	23.96	24.24	23.80	24.12	24.06	24.12	0.17	417	938
GF10Q23	32,190	32,350	32,090	32,350	32,270	32,350.00	170	998	2,227
GFQ23	32,190	32,340	32,190	32,340	32,296	32,340.00	180	41	121
GOU23	2,020	2,036	2,017	2,032	2,028	2,031.70	12	2810	2,207
SVFU23	24.32	24.52	24.17	24.47	24.35	24.47	0.15	32	60

Source : SET Smart

Single Stock Futures

blssk	เปิด	สูงสุด	ต่ำสุด	ปิด	เฉลี่ย	ราคาที่ใช้ชำระ ราคา	เปลี่ยนแปลง	ปริมาณ (สัญญา)	สถานะคงค้าง (สัญญา)
AAVM23	2.87	2.88	2.82	2.82	2.85	2.82	-0.02	95	70,701
ADVANCM23	213	213.00	213	213.00	213.00	213.00	-1	341	3,459
AEONTSM23	180.37	181.95	180.37	180.84	181.05	180.84	0.3	3	253
AMATAM23	22.25	22.35	22.25	22.25	22.29	22.25	0.1	910	647
AOTM23	71.74	71.74	71	71.25	71.15	71.25	0.5	256	3,049
APM23	11.32	12.35	11.32	11.48	11.66	11.48	-0.51	4	4,013
AWCM23	5.73	5.84	5.73	5.80	5.78	5.80	0.03	1,528	7,786
BAM23	13.69	13.69	13.59	13.59	13.65	13.59	0.3	14	1,072
BAMM23	13.45	13.45	13.18	13.40	13.24	13.37	-0.08	76	14,473
BANPUM23	10.2	10.20	10.07	10.11	10.15	10.11	-0.09	469	52,015
BAYM23	-	-	-	-	-	28.92	-	-	506
BBLM23	152.1	154.48	150	150.00	150.92	150.00	-3.5	531	3,208
BCHM23	20.13	20.13	20.13	20.13	20.13	20.13	-0.07	12	19,583
BCPGM23	-	-	-	-	-	9.90	0.05	-	6,993
BCPM23	32.4	32.40	31.3	31.35	31.65	31.35	-1.15	136	2,819
BDM23	29.25	29.35	29.25	29.35	29.35	29.35	-0.48	222	2,206
BEAUTYM23	1.23	1.25	1.23	1.25	1.23	1.25	0.02	1,518	49,119
BECM23	8.63	8.79	8.35	8.79	8.47	8.75	0.07	6	11,135
BEMM23	8.98	9.00	8.9	8.90	8.93	8.90	-0.1	82	13,645
BGRIMM23	40.05	40.05	40.05	40.05	40.05	40.05	-0.05	4	3,166
BHM23	221.5	224.50	219.8	224.50	223.33	224.50	3.95	291	416
BJCM23	37.76	37.76	37.32	37.42	37.57	37.42	-0.5	6	2,477
BLAM23	27.8	27.80	27.8	27.80	27.80	27.80	-0.67	1	8,307
BLANDM23	0.99	1.00	0.99	1.00	0.99	1.00	-	66	87,616
BPPM23	-	-	-	-	-	15.90	0.1	-	1,700
BTSM23	7	7.31	7	7.31	7.14	7.15	0.13	578	15,315
CBGM23	97.3	97.30	95.11	95.58	96.66	95.58	-2.09	490	2,917
CENTELM23	55.9	55.90	55.75	55.90	55.89	55.90	-0.5	368	1,587
CHGM23	3.57	3.65	3.57	3.60	3.60	3.60	0.01	5	3,194
CKM23	20.8	20.80	20.7	20.70	20.78	20.70	-0.15	83	854
CKPM23	4.09	4.09	4.02	4.02	4.06	4.02	-0.04	507	28,843
COM7M23	30.52	30.75	30.22	30.35	30.53	30.35	-0.15	429	7,925
CPALLM23	62.5	62.58	61.42	61.50	61.97	61.50	-0.8	589	3,940
CPFM23	21.36	21.45	21.06	21.38	21.26	21.39	-0.11	1,303	21,009
CPNM23	68.62	68.62	68.62	68.62	68.62	68.62	0.6	281	759
CRCM23	44.22	44.26	44.1	44.25	44.21	44.25	0.55	304	1,823
DELTAM23	1059.33	1,125.00	1051	1,123.95	1,100.50	1,123.29	63.96	615	1,357
DTACM23X	-	-	-	-	-	8.44	0.15	-	180
EAM23	74.5	75.90	74.5	75.90	75.74	75.90	0.11	217	21,419
EASTWM23	-	-	-	-	-	4.93	0.02	-	10
EGCOM23	156.38	156.38	156.37	156.38	156.38	156.38	-0.27	68	638
EPGM23	-	-	-	-	-	8.05	0.09	-	4,000
ERWM23	4.96	4.96	4.96	4.96	4.96	4.94	0.04	501	3,525
ESSOM23	8.64	8.64	8.64	8.64	8.64	8.64	-	1	22,661
GFPTM23	-	-	-	-	-	11.30	-0.1	-	6,039
GLOBALM23X	18.6	18.60	18.6	18.60	18.60	18.60	-	201	3,116
GPSCM23	68.1	68.52	68.1	68.30	68.26	68.30	-0.5	225	4,619
GULFM23	53.1	53.10	52.7	52.82	52.94	52.85	-0.15	8	14,329
GUNKULM23	3.96	4.04	3.94	4.03	3.99	4.03	0.12	10,480	102,541
HANAM23	50.4	50.73	49.69	50.20	49.99	50.20	-0.3	289	1,871
HMPROM23	14.34	14.45	14.34	14.45	14.34	14.45	0.11	245	6,891
ICHIM23	-	-	-	-	-	13.21	0.2	200	13,556
INTUCHM23X	-	-	-	-	-	73.15	0.74	-	116
IRPCM23	2.66	2.66	2.64	2.65	2.65	2.65	0.02	2,040	24,358
ITDM23	1.64	1.66	1.64	1.65	1.64	1.65	-0.01	538	31,345
IVLM23	34.45	34.45	34.45	34.45	34.45	34.45	0.2	1	12,094
JASM23	2.1	2.15	2.1	2.15	2.10	2.12	0.02	522	74,253

blssk	เปิด	สูงสุด	ต่ำสุด	ปิด	เฉลี่ย	ราคาที่ใช้ชำระ ราคา	เปลี่ยนแปลง	ปริมาณ (สัญญา)	สถานะคงค้าง (สัญญา)
JMTM23	46.35	46.89	46	46.89	46.17	46.60	0.5	111	5,327
KBANKM23	132.2	132.30	130	130.35	130.99	130.35	-1.17	375	7,928
KCEM23	46.44	46.45	45.5	45.55	45.97	45.55	-1.05	465	6,109
KEXM23	16	16.09	16	16.09	16.05	16.00	0.23	2	4,024
KKPM23	63.12	63.12	61.9	61.90	62.66	62.00	-1.37	255	3,512
KTBM23	16.11	16.19	16.03	16.03	16.08	16.07	-0.13	347	18,130
KTCM23	53.27	53.40	53.27	53.40	53.34	53.40	-0.45	4	54,989
LHM23	9.52	9.52	9.52	9.52	9.52	9.50	-0.19	16	3,317
LPNM23	4.68	4.68	4.68	4.68	4.68	4.68	-0.07	1	3,133
MAJORM23	16.48	16.48	16.48	16.48	16.48	16.48	-0.23	3	4,581
MBKM23	-	-	-	-	-	16.08	0.03	-	1,348
MEGAM23	42.19	42.19	42.19	42.19	42.19	42.19	-0.25	202	1,635
MINTM23	31.99	32.20	31.99	32.20	32.11	32.17	0.57	315	1,935
MM23	-	-	-	-	-	51.12	0.25	20	1,366
MTCM23	34	34.00	33.21	34.00	33.73	34.00	0.2	295	7,279
ORIM23	11.23	11.23	11.23	11.23	11.23	11.23	-0.34	502	4,622
ORM23	21.2	23.30	21.14	22.17	21.47	21.59	0.44	1,267	5,176
OSPM23	30.4	30.61	30.4	30.61	30.44	30.61	-0.21	305	2,564
PLANBM23	8.7	8.70	8.7	8.70	8.70	8.70	-0.02	1	20,527
PRMM23	7.12	7.12	7.12	7.12	7.12	7.12	-0.08	1	10,636
PSHM23	-	-	-	-	-	12.32	-	-	346
PSLM23	13.45	13.68	13.45	13.58	13.53	13.58	0.06	109	3,195
PTGM23	14.1	14.10	14	14.00	14.03	14.00	-0.2	217	14,970
PTTEPM23	152.26	153.50	150.3	151.00	151.38	151.00	-1.11	263	3,912
PTTGCM23	46.5	46.50	45.85	45.85	46.14	45.87	-0.78	218	3,824
PTTM23	31.81	31.82	31.75	31.82	31.79	31.82	0.09	173	6,391
QHM23	2.33	2.40	2.33	2.40	2.37	2.40	0.02	8	2,751
RATCHM23	38.7	38.70	38.65	38.65	38.67	38.65	-0.25	2	1,502
RSM23	15.22	15.23	15.2	15.23	15.22	15.23	-0.72	77	29,543
SAMARTM23	4.11	4.11	4.06	4.09	4.09	4.09	-0.14	85	6,847
SAWADM23	51.13	51.38	51.13	51.15	51.20	51.15	0.02	127	6,289
SCBM23	98.5	101.49	98.15	99.12	99.02	99.12	1.12	96	5,483
SCCM23	318.2	318.20	315.75	317.98	317.26	317.50	-	38	1,982
SCGPM23	46.85	46.85	45.6	46.50	46.07	46.50	0.25	661	4,204
SGPM23	-	-	-	-	-	9.09	0.05	-	200
SIRIM23	1.71	1.75	1.71	1.73	1.74	1.73	0.01	3,661	25,653
SM23	-	-	-	-	-	1.73	-0.01	-	19,419
SPALIM23	-	-	-	-	-	21.94	0.05	200	2,469
SPCGM23	-	-	-	-	-	13.65	0.1	-	2
SPRCM23	10.97	10.97	10.97	10.97	10.97	10.97	0.2	4	1,031
STAM23	21.8	21.99	21.74	21.99	21.85	21.95	0.34	29	1,908
STECM23	12.89	13.00	12.39	12.59	12.61	12.59	-0.2	1,042	8,708
STGTM23	10.25	10.25	10.13	10.13	10.19	10.13	-0.22	10	3,702
STPIM23	-	-	-	-	-	4.16	0.12	-	20,416
SUPERM23	0.65	0.67	0.65	0.65	0.66	0.66	0.04	27,019	75,169
TASCOM23	19.34	19.60	19.34	19.60	19.42	19.60	0.3	124	2,390
TCAPM23	44.25	44.25	44.25	44.25	44.25	44.25	0.04	2	123
THAIM23	-	-	-	-	-	3.36	-	-	-
THANIM23	-	-	-	-	-	3.63	0.02	-	5,522
THCOMM23	13.95	14.00	13.7	14.00	13.87	14.00	-	531	4,705
THGM23	-	-	-	-	-	68.07	-0.01	-	9
TISCOM23	-	-	-	-	-	99.05	4.55	40	230
TKNM23	9.7	9.70	9.57	9.60	9.59	9.60	-0.17	34	15,633
TOAM23	-	-	-	-	-	31.01	-0.5	-	603
TOPM23	52.85	52.85	52.74	52.74	52.83	52.74	-0.41	58	780
TPIPLM23	1.61	1.62	1.61	1.61	1.61	1.58	-0.04	41	4,217
TPIPPM23	-	-	-	-	-	3.32	-0.02	-	3,160
TQMM23	-	-	-	-	-	32.85	-0.77	780	7,722

blssk	เปิด	สูงสุด	ต่ำสุด	ปิด	เฉลี่ย	ราคาที่ใช้ชำระ ราคา	เปลี่ยนแปลง	ปริมาณ (สัญญา)	สถานะคงค้าง (สัญญา)
TRUEEM23X	8.27	8.36	8.27	8.36	8.31	8.36	-	2	217
TRUEM23	8.37	8.37	8.37	8.37	8.37	8.40	0.05	1,005	26,685
TTAM23	7.9	7.90	7.85	7.85	7.88	7.88	-0.07	3	1,837
TTBM23	1.38	1.38	1.36	1.38	1.37	1.38	0.01	1,530	26,693
TTCLM23	4.55	4.55	4.53	4.53	4.54	4.53	0.01	2	2,564
TTWM23	8.75	8.75	8.75	8.75	8.75	8.64	0.1	102	380
TUM23	14.47	14.47	14.04	14.24	14.18	14.24	-0.26	1,874	15,687
TVOM23X	-	-	-	-	-	26.36	-	-	400
UNIQM23	3.9	3.90	3.9	3.90	3.90	3.90	0.08	1	6,546
VGIM23	3.9	3.90	3.9	3.90	3.90	3.90	0.02	17	13,679
VNGM23	-	-	-	-	-	4.93	-0.02	-	8,603
WHAM23	4.22	4.24	4.17	4.23	4.19	4.22	0.04	10,162	23,425
Total								83,993	1,405,375

Source : SET Smart

Bualuang Securities Public Company Limited

DISCLAIMER

BUALUANG SECURITIES PUBLIC COMPANY LIMITED (BLS) is a subsidiary of BANGKOK BANK PUBLIC COMPANY LIMITED (BBL). This document is produced based upon sources believed to be reliable but their accuracy, completeness or correctness is not guaranteed. The statements or expressions of opinion herein were arrived at after due and careful consideration to use as information for investment. Expressions of opinion contained herein are subject to change without notice. This document is not, and should not be construed as, an offer or the solicitation of an offer to buy or sell any securities. The use of any information shall be at the sole discretion and risk of the user.

BUALUANG SECURITIES PUBLIC COMPANY LIMITED MAY BE IN RELATIONSHIP WITH THE SECURITIES IN THIS REPORT. "Opinions, projections and other information contained in this report are based upon sources believed to be accurate including the draft prospectus, but no responsibility is accepted for any loss occasioned by reliance placed upon the contents hereof. Bualuang Securities Public Company Limited may from time to time perform investment, advisory or other services for companies mentioned in this report, as well as dealing (as principal or otherwise) in, or otherwise being interested in, any securities mentioned herein, This report does not constitute a solicitation to buy or sell any securities". Investors should carefully read details in the prospectus before making investment decision.






BUALUANG SECURITIES PUBLIC COMPANY LIMITED MAY ACT AS MARKET MAKER AND ISSUER OF DWs, AND ISSUER OF STRUCTURED NOTES ON THESE SECURITIES. The company may prepare the research reports on those underlying securities. Investors should carefully read the details of the derivative warrants and structured notes in the prospectus before making investment decisions.

ADVANC	AMATA	AOT	BDMS	BH	CBG	CENTEL	CPALL	GLOBAL	GPSC	IRPC	KBANK	KCE	KTC	MINT
PTG	PTT	PTTEP	PTTGC	SCB	SPRC	TOP	WHA	ESSO	STA	BGRIM	GULF	MTC	AWC	CRC
CPF	CPN	HANA	HMPRO	IVL	OSP	SAWAD	BANPU	BCH	BTS	CK	SCC	STEC	TISCO	TU
INTUCH	RATCH	VGI	SCGP	COM7	DOHOME	JMT	CHG	TTB	BAM	BCP	AP	KTB	KKP	OR
BEM	GUNKUL	EA	SPALI	RBF	STGT	MEGA	JMART	BEC	SYNEX	BLA	KEX	RCL	SINGER	STARK
TIDLOR	FORTH	TIPH	AAV	DELTA	BCPG	SABUY	THG	CKP	TRUE	PSL				

BUALUANG SECURITIES PUBLIC COMPANY LIMITED IS OR MAY BE AN UNDERWRITER/CO-UNDERWRITER/JOINT LEAD IN RESPECT OF THE INITIAL PUBLIC OFFERING (IPO) OF SECURITIES.

Financial Advisor	Lead underwriter/ Underwriter/ Co-underwriter

CG Rating

Score Range	Score Range	Description
90 – 100		Excellent
80 – 89		Very Good
70 – 79		Good
60 – 69		Satisfactory
50 – 00359		Pass
Less than 50	No logo given	-

Thailand's Private Sector Collective Action Coalition Against Corruption programme (Thai CAC) under Thai Institute of Directors

- companies that have **declared** their intention to join CAC, and
- companies **certified** by CAC.

This research report was prepared by Bualuang Securities Public Company Limited and refers to research prepared by Morgan Stanley. Morgan Stanley does not warrant or guarantee the accuracy or completeness of its research reports. Morgan Stanley reserves copyright and other proprietary rights in the material reproduced in this report. Morgan Stanley is under no obligation to inform Bualuang Securities or you if the views or information referred to or reproduced in this research report change.

Corporate Governance Report disclaimer

The disclosure of the survey result of the Thai Institute of Directors Association (IOD) regarding corporate governance is made pursuant to the policy of the Office of the Securities and Exchange Commission. The IOD survey is based on the information of a company listed on the Stock Exchange of Thailand and the Market for Alternative Investment disclosed to the public and able to be accessed by a general public investor. The result, therefore, is from the perspective of a third party. It is not an evaluation of operation and is not based on inside information.

The survey result is as of the date appearing in the Corporate Governance Report of Thai Listed Companies. As a result, the survey result may be changed after that date. Bualuang Securities Public Company Limited neither confirms nor certifies the accuracy of such survey results.

“Disclaimer: The disclosure of the Anti-Corruption Progress Indicators of a listed company on the Stock Exchange of Thailand, which is assessed by the relevant institution as disclosed by the Office of the Securities and Exchange Commission, is made in order to comply with the policy and sustainable development plan for the listed companies. The relevant institution made this assessment based on the information received from the listed company, as stipulated in the form for the assessment of Anti-corruption which refers to the Annual Registration Statement (Form 56-1), Annual Report (Form 56-2), or other relevant documents or reports of such listed company. The assessment result is therefore made from the perspective of a third party. It is not an assessment of operation and is not based on any inside information. Since this assessment is only the assessment result as of the date appearing in the assessment result, it may be changed after that date or when there is any change to the relevant information. Nevertheless, Bualuang Securities Public Company Limited neither confirms, verifies, nor certifies the accuracy and completeness of the assessment result.”

BUALUANG RESEARCH – RECOMMENDATION FRAMEWORK

STOCK RECOMMENDATIONS

BUY: Expected positive total returns of 15% or more over the next 12 months.

HOLD: Expected total returns of between -15% and +15% over the next 12 months.

SELL: Expected negative total returns of 15% or more over the next 12 months.

TRADING BUY: Expected positive total returns of 15% or more over the next 3 months.

SECTOR RECOMMENDATIONS

OVERWEIGHT: The industry, as defined by the analyst's coverage universe, is expected to outperform the relevant primary market index over the next 12 months.

NEUTRAL: The industry, as defined by the analyst's coverage universe, is expected to perform in line with the relevant primary market index over the next 12 months.

UNDERWEIGHT: The industry, as defined by the analyst's coverage universe, is expected to underperform the relevant primary market index over the next 12 months.

IMPORTANT DISCLOSURES FOR U.S. PERSONS

This research report was prepared by Bualuang Securities Public Company Limited (“BLS”). BLS is not a registered broker-dealer in the United States and, therefore, is not subject to U.S. rules regarding the preparation of research reports and the independence of research analysts. This research report is provided for distribution to “major U.S. institutional investors” in reliance on the exemption from registration provided by Rule 15a-6 of the U.S. Securities Exchange Act of 1934, as amended (the “Exchange Act”).

Under no circumstances should any recipient of this research report effect any transaction to buy or sell securities or related financial instruments through BLS. Rosenblatt Securities Inc. accepts responsibility for the contents of this research report, subject to the terms set out below, to the extent that it is delivered to a U.S. person other than a major U.S. institutional investor.

The analyst whose name appears in this research report is not registered or qualified as a research analyst with the Financial Industry Regulatory Authority (“FINRA”) and may not be an associated person of Rosenblatt Securities Inc. and, therefore, may not be subject to applicable restrictions under FINRA Rules on communications with a subject company, public appearances and trading securities held by a research analyst account.

Additional Disclosures

This research report is for distribution only under such circumstances as may be permitted by applicable law. This research report has no regard to the specific investment objectives, financial situation or particular needs of any specific recipient, even if sent only to a single recipient. This research report is not guaranteed to be a complete statement or summary of any securities, markets, reports or developments referred to in this research report. Neither BLS nor any of its directors, officers, employees or agents shall have any liability, however arising, for any error, inaccuracy or incompleteness of fact or opinion in this research report or lack of care in this research report’s preparation or publication, or any losses or damages which may arise from the use of this research report.

BLS may rely on information barriers, such as “Chinese Walls” to control the flow of information within the areas, units, divisions, groups, or affiliates of BLS.

Investing in any non-U.S. securities or related financial instruments (including ADRs) discussed in this research report may present certain risks. The securities of non-U.S. issuers may not be registered with, or be subject to the regulations of, the U.S. Securities and Exchange Commission. Information on such non-U.S. securities or related financial instruments may be limited. Foreign companies may not be subject to audit and reporting standards and regulatory requirements comparable to those in effect within the United States.

The value of any investment or income from any securities or related financial instruments discussed in this research report denominated in a currency other than U.S. dollars is subject to exchange rate fluctuations that may have a positive or adverse effect on the value of or income from such securities or related financial instruments.

Past performance is not necessarily a guide to future performance and no representation or warranty, express or implied, is made by BLS with respect to future performance. Income from investments may fluctuate. The price or value of the investments to which this research report relates, either directly or indirectly, may fall or rise against the interest of investors. Any recommendation or opinion contained in this research report may become outdated as a consequence of changes in the environment in which the issuer of the securities under analysis operates, in addition to changes in the estimates and forecasts, assumptions and valuation methodology used herein.

No part of the content of this research report may be copied, forwarded or duplicated in any form or by any means without the prior consent of BLS and BLS accepts no liability whatsoever for the actions of third parties in this respect.