

# TFEX Daily

4 เมษายน 2566

## S50M23

ไม่หลุดโซนรับ สถานะ Long และถือต่อ

Gold spot

พักตัว...ขาขึ้นยังไม่จบ!

“แผนเทรด.....ยังไม่ผ่านเส้น EMA 200”

## S50M23

“ดัชนีติดเส้น EMA 200 วัน รอทะลุผ่าน”

มุมมอง: ดัชนีติดเส้น EMA 200 วัน บริเวณ 970 จุด อย่างไรก็ตาม MACD โครงสร้างยังคงแข็งแกร่งเนื่องจากติดเส้น signal line พร้อมกับทะลุผ่านเส้น 0 ได้สำเร็จ

แผนเทรด... ฟังชื่อไม่หลุดโซนรับ 958 และถือต่อ ลุ้นด้าน 970 จุด ในทางตรงข้ามสถานะขายและรอสัญญาณยืนยัน หากยังไม่ หลุด low หลุดโซนรับ ยังไม่รีบ

Note:เนื่องจากตลาด TFEX มีความผันผวนมาก หากขาดทุนมากกว่า 10% ของพอร์ต แนะนำปิดสถานะ

“Bullish Pennant...พักตัว ขาขึ้นยังไม่จบ”

## Gold spot

จับสัญญาณเทรด...ทองคำ

มุมมอง: Gold spot พักตัว ย่อเล็กน้อย ขาขึ้นยังไม่จบง่าย ๆ โครงสร้างแกว่งตัวอยู่ในกรอบสามเหลี่ยม “Bullish Pennant” รอทะลุด้าน ขณะที่เครื่องมือวัดโมเมนตัม RSI พักตัว แต่อยู่ในขอบริเวณ 50

แผนเทรด...แนะนำทยอยซื้อบริเวณโซนรับ \$1950 ด้าน \$2,000 และ \$2,050/ออนซ์ ในทางตรงข้ามสถานะขายและปิดสถานะไปแล้ว ปัจจุบันแนะนำรอสัญญาณกลับตัว รอโซนด้าน

Note:เปิดความเสี่ยงหากผลตอบแทนติดลบมากกว่า 10% ของพอร์ต

วิกิจ ธรรมรัตน์

นักวิเคราะห์การลงทุนปัจจัยพื้นฐานด้านตลาดทุน/ปัจจัยทางเทคนิค

Wikij.tir@bualuang.co.th Tel. (662) 618-1336

S50M23: รับ 958 ด้าน 970

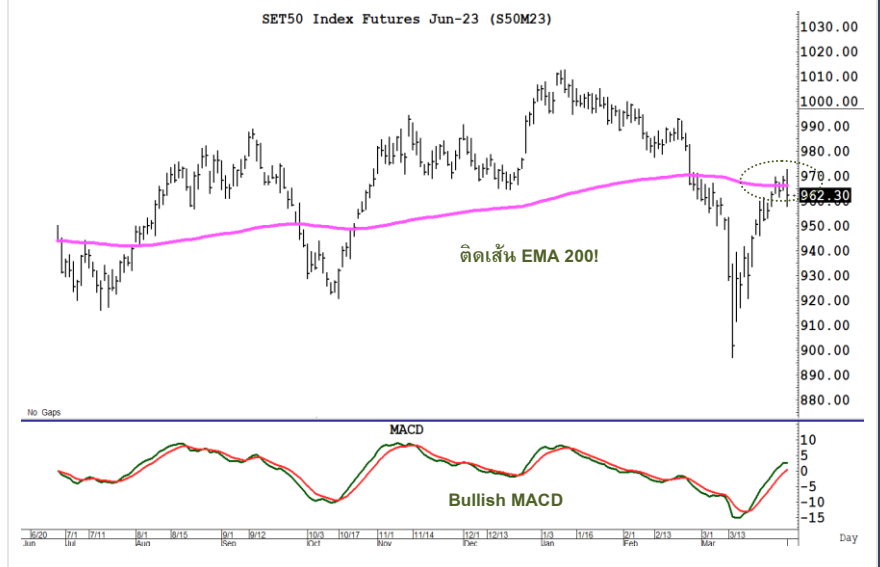
GFJ23: รับ 31,500 ด้าน 33,000

มุมมองทางเทคนิค โดย คุณธนรัตน์ อิศรกุล  
นักวิเคราะห์การลงทุนปัจจัยพื้นฐานด้านหลักทรัพย์และปัจจัยทางเทคนิค

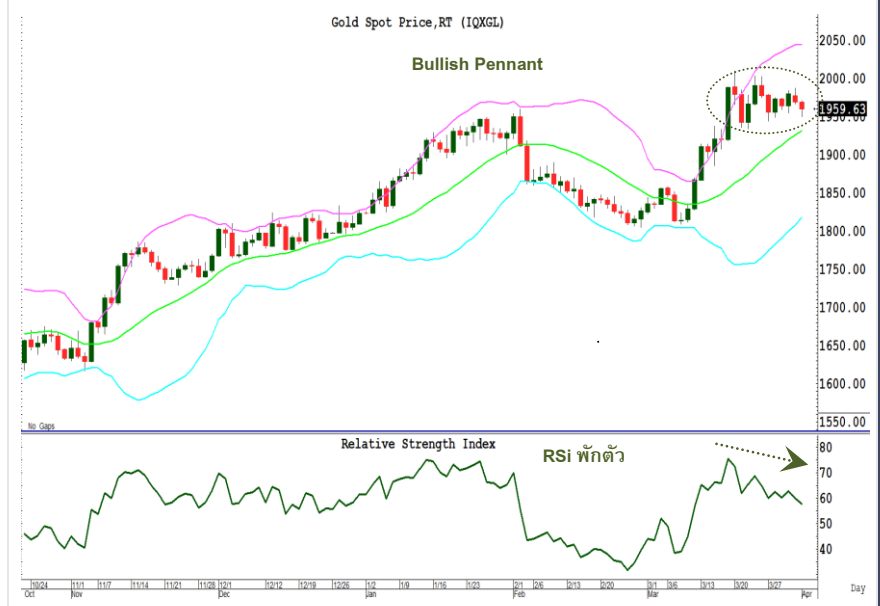
Thanarut@bualuang.co.th

Tel. (662) 618-1334

### SET50 Index Future



### Gold Spot



หลักทรัพย์	เปิด	สูงสุด	ต่ำสุด	ปิด	เฉลี่ย	ราคาที่ใช้ชำระ ราคา	เปลี่ยนแปลง	ปริมาณ (สัญญา)	สถานะคงค้าง (สัญญา)
SET50	975.59	977.46	961.42	964.83	969.83	N/A	-9.43	N/A	N/A
S50J23	972.00	972.00	962.2	963.20	964.10	963.20	-6.8	63	177
S50K23	975	975.00	960	962.80	966.40	963.40	-6.2	75	172
S50M23	972	972.60	957.7	962.10	964.30	962.30	-6	197,400	389,991
S50U23	968.2	969.00	955	959.10	960.90	959.10	-5.7	20,915	38,115
S50Z23	966.4	968.50	955	958.90	960.50	958.80	-5.5	4,480	20,607
S50H24	964	965.50	954	956.90	958.60	957.10	-4.7	1,743	1,413
<b>Total</b>								<b>224,676</b>	<b>450,475</b>

Source : SET Smart

#### Trading by Investor Type - SET50 Index Futures

##### 5 วันย้อนหลัง

วันที่	นักลงทุนต่างประเทศ ปริมาณ			นักลงทุนสถาบัน ปริมาณ			นักลงทุนภายในประเทศ ปริมาณ			รวม	
	ซื้อ	ขาย	สุทธิ	ซื้อ	ขาย	สุทธิ	ซื้อ	ขาย	สุทธิ	ปริมาณ	สถานะคงค้าง
03/04/2023	73,240	95,945	-22,705	43,829	35,578	8,251	107,607	93,153	14,454	224,676	450,475
31/03/2023	85,071	47,558	37,513	25,016	31,609	-6,593	46,699	77,619	-30,920	156,786	435,301
30/03/2023	82,555	80,245	2,310	36,795	35,074	1,721	91,145	95,176	-4,031	210,495	541,915
29/03/2023	196,471	190,653	5,818	38,646	39,390	-744	81,989	87,063	-5,074	317,106	698,516
28/03/2023	330,975	313,466	17,509	55,689	61,191	-5,502	73,650	85,657	-12,007	460,314	725,918

##### 4 เดือนย้อนหลัง

วันที่	นักลงทุนต่างประเทศ ปริมาณ			นักลงทุนสถาบัน ปริมาณ			นักลงทุนภายในประเทศ ปริมาณ			รวม	
	ซื้อ	ขาย	สุทธิ	ซื้อ	ขาย	สุทธิ	ซื้อ	ขาย	สุทธิ	ปริมาณ	สถานะคงค้าง
เม.ย. 2023	73,240	95,945	-22,705	43,829	35,578	8,251	107,607	93,153	14,454	224,676	450,475
มี.ค. 2023	3,051,754	2,935,366	116,388	1,110,804	1,094,251	16,553	2,675,691	2,808,632	-132,941	6,838,249	435,301
ก.พ. 2023	1,468,424	1,592,263	-123,839	668,550	650,734	17,816	2,019,686	1,913,663	106,023	4,156,660	664,829
ม.ค. 2023	1,346,543	1,446,322	-99,779	678,348	675,116	3,232	1,994,379	1,897,832	96,547	4,019,270	673,734

##### 4 ไตรมาสย้อนหลัง

วันที่	นักลงทุนต่างประเทศ ปริมาณ			นักลงทุนสถาบัน ปริมาณ			นักลงทุนภายในประเทศ ปริมาณ			รวม	
	ซื้อ	ขาย	สุทธิ	ซื้อ	ขาย	สุทธิ	ซื้อ	ขาย	สุทธิ	ปริมาณ	สถานะคงค้าง
Q2/2023	73,240	95,945	-22,705	43,829	35,578	8,251	107,607	93,153	14,454	224,676	450,475
Q1/2023	5,866,721	5,973,951	-107,230	2,457,702	2,420,101	37,601	6,689,756	6,620,127	69,629	15,014,179	435,301
Q4/2022	5,773,579	5,666,820	106,759	2,433,982	2,462,801	-28,819	5,991,792	6,069,732	-77,940	14,199,353	563,223
Q3/2022	6,188,060	6,186,241	1,819	2,707,073	2,714,363	-7,290	6,950,031	6,944,560	5,471	15,845,164	495,136

Source : SET Smart

#### Metal Futures

หลักทรัพย์	เปิด	สูงสุด	ต่ำสุด	ปิด	เฉลี่ย	ราคาที่ใช้ชำระ ราคา	เปลี่ยนแปลง	ปริมาณ (สัญญา)	สถานะคงค้าง (สัญญา)
GF10J23	32,170	32,230	31,960	32,170	32,087	32,160.00	-50	2944	5,830
GFJ23	32,160	32,190	32,040	32,160	32,099	32,160.00	-50	45	208
GF10M23	32,240	32,270	32,010	32,210	32,150	32,200.00	-50	1904	6,215
GFM23	32,140	32,210	32,040	32,210	32,108	32,210.00	-30	18	223
GOM23	2,008	2,015	1,977	1,992	1,996	1,991.70	-15.2	37933	17,641
SVFM23	24.11	24.44	23.85	24.09	24.20	24.09	-0.03	223	975
GF10Q23	32,320	32,350	32,100	32,270	32,229	32,300.00	-50	593	2,224
GFQ23	32,340	32,340	32,110	32,110	32,198	32,210.00	-130	33	116
GOU23	2,033	2,040	2,004	2,017	2,020	2,017.40	-14.3	5982	2,094
SVFU23	24.61	24.67	24.18	24.35	24.40	24.35	-0.12	18	63

Source : SET Smart

#### Single Stock Futures

blssk	เปิด	สูงสุด	ต่ำสุด	ปิด	เฉลี่ย	ราคาที่ใช้ชำระ ราคา	เปลี่ยนแปลง	ปริมาณ (สัญญา)	สถานะคงค้าง (สัญญา)	
AAVM23	2.8	2.81	2.78	2.78	2.79	2.79	-0.03	2,633	70,243	
ADVANCM23	212.2	213.00	212	213.00	212.23	213.00	-	257	3,457	
AEONTSM23	181.84	181.84	181.84	181.84	181.84	181.84	1	1	254	
AMATAM23	22.25	22.25	22.25	22.25	22.25	22.25	-	105	747	
AOTM23	71	71.94	71	71.70	71.68	71.66	0.41	743	3,246	
APM23	-	-	-	-	-	-	11.99	0.51	-	4,013
AWCM23	5.84	5.84	5.77	5.80	5.81	5.80	-	13	7,788	
BAM23	13.06	13.79	13.06	13.79	13.43	13.79	0.2	2	1,073	
BAMM23	13.3	13.43	13.1	13.43	13.22	13.41	0.04	276	14,321	
BANPUM23	10.2	10.25	10.19	10.25	10.22	10.25	0.14	943	51,617	
BAYM23	29.1	29.10	29.1	29.10	29.10	29.10	0.18	41	547	
BBLM23	151.8	152.00	150.79	151.55	151.32	151.60	1.6	281	3,014	
BCHM23	20.38	20.38	20.38	20.38	20.38	20.29	0.16	101	19,683	
BCPGM23	9.97	9.97	9.97	9.97	9.97	9.98	0.08	23	6,988	
BCPM23	32.25	33.20	32.25	33.16	32.68	33.16	1.81	1,783	3,973	
BDM23	29.4	29.40	29.38	29.38	29.39	29.38	0.03	204	2,008	
BEAUTYM23	1.22	1.24	1.22	1.24	1.22	1.24	-0.01	27	49,102	
BECM23	8.78	8.78	8.47	8.69	8.54	8.63	-0.12	17	11,146	
BEMM23	8.99	8.99	8.9	8.95	8.95	8.95	0.05	8	13,651	
BGRIMM23	40.25	40.40	39.5	39.50	39.89	39.49	-0.56	223	3,264	
BHM23	225.5	226.05	222.5	222.50	224.46	222.50	-2	217	450	
BJCM23	37.67	37.67	37.67	37.67	37.67	37.67	0.25	502	2,679	
BLAM23	28.57	28.57	27.92	28.37	28.30	28.37	0.57	27	8,328	
BLANDM23	0.97	0.99	0.97	0.99	0.98	0.99	-0.01	53	87,656	
BPPM23	-	-	-	-	-	15.80	-0.1	-	1,700	
BTSM23	7.12	7.12	7.12	7.12	7.12	7.12	-0.03	1,504	13,819	
CBGM23	95.1	95.10	92.75	93.00	93.53	93.00	-2.58	875	2,842	
CENTELM23	56.4	56.40	56.26	56.26	56.38	56.26	0.36	8	1,594	
CHGM23	3.61	3.61	3.52	3.60	3.56	3.58	-0.02	30	3,207	
CKM23	-	-	-	-	-	20.63	-0.07	-	854	
CKPM23	4.09	4.09	4.07	4.07	4.09	4.07	0.05	108	28,736	
COM7M23	30.35	30.35	29.8	29.80	29.85	29.80	-0.55	608	8,328	
CPALLM23	61.75	61.75	61.33	61.36	61.53	61.50	-	622	4,274	
CPFM23	21.16	21.55	21.16	21.55	21.30	21.55	0.16	524	21,015	
CPNM23	69	69.00	69	69.00	69.00	69.00	0.38	101	698	
CRCM23	43.84	44.55	43.84	44.55	44.08	44.55	0.3	303	1,823	
DELTAM23	1101	1,101.00	960	970.00	1,006.81	970.00	-153.29	1,122	1,425	
DTACM23X	-	-	-	-	-	8.39	-0.05	-	180	
EAM23	76.5	76.75	76	76.02	76.19	76.05	0.15	204	21,514	
EASTWM23	-	-	-	-	-	4.93	-	-	10	
EGCOM23	156.39	157.39	156.39	156.80	156.87	156.80	0.42	46	595	
EPGM23	7.95	7.95	7.95	7.95	7.95	7.95	-0.1	6	4,006	
ERWM23	4.91	4.91	4.91	4.91	4.91	4.98	0.04	1	3,525	
ESSOM23	8.7	8.78	8.69	8.78	8.69	8.78	0.14	1,053	22,611	
GFPTM23	-	-	-	-	-	11.30	-	-	6,039	
GLOBALM23X	18.5	18.50	18.5	18.50	18.50	18.50	-0.1	5	3,121	
GPSCM23	68.25	68.25	67.07	67.25	67.65	67.32	-0.98	304	4,727	
GULFM23	52.5	53.25	52.48	53.10	52.94	53.10	0.25	239	14,335	
GUNKULM23	4.02	4.13	4	4.13	4.07	4.13	0.1	19,173	117,567	
HANAM23	50.05	50.99	49.45	50.99	50.19	50.99	0.79	140	1,773	
HMPROM23	13.91	13.91	13.91	13.91	13.91	14.12	-0.33	104	6,795	
ICHIM23	12.62	12.62	12.62	12.62	12.62	12.62	-0.59	505	13,461	
INTUCHM23X	-	-	-	-	-	73.44	0.29	-	116	
IRPCM23	2.7	2.72	2.68	2.72	2.70	2.72	0.07	9,694	30,938	
ITDM23	1.63	1.64	1.63	1.64	1.64	1.64	-0.01	2	31,347	
IVLM23	35.15	35.15	34.51	34.96	34.92	34.96	0.51	365	12,054	
JASM23	2.14	2.17	2.1	2.17	2.15	2.17	0.05	40	74,260	

blssk	เปิด	สูงสุด	ต่ำสุด	ปิด	เฉลี่ย	ราคาที่ใช้ชำระ ราคา	เปลี่ยนแปลง	ปริมาณ (สัญญา)	สถานะคงค้าง (สัญญา)
JMTM23	45.5	46.55	45.5	45.80	45.75	45.80	-0.8	126	5,272
KBANKM23	131.45	131.50	130.2	130.60	130.79	130.60	0.25	361	8,081
KCEM23	45.73	45.73	44.4	45.65	45.00	45.56	0.01	392	5,985
KEXM23	16.15	16.15	16.05	16.05	16.05	16.15	0.15	51	4,075
KKPM23	62.37	62.87	62.1	62.87	62.63	62.87	0.87	240	3,431
KTBM23	16.09	16.16	16.03	16.16	16.07	16.16	0.09	339	18,435
KTCM23	53	53.00	53	53.00	53.00	53.00	-0.4	3	54,992
LHM23	9.45	9.45	9.45	9.45	9.45	9.45	-0.05	1	3,316
LPNM23	4.71	4.73	4.69	4.73	4.71	4.73	0.05	24	3,146
MAJORM23	-	-	-	-	-	16.61	0.13	-	4,581
MBKM23	-	-	-	-	-	16.08	-	100	1,248
MEGAM23	42.19	42.44	42.19	42.44	42.31	42.44	0.25	104	1,735
MINTM23	31.66	32.49	31.66	32.15	32.11	32.15	-0.02	132	2,035
MM23	50.9	50.90	50.9	50.90	50.90	50.90	-0.22	82	1,408
MTCM23	34.01	34.01	33.47	34.00	33.89	34.00	-	118	7,248
ORIM23	-	-	-	-	-	11.58	0.35	-	4,622
ORM23	21.4	21.54	21.35	21.50	21.42	21.50	-0.09	1,442	4,194
OSPM23	-	-	-	-	-	30.66	0.05	100	2,664
PLANBM23	-	-	-	-	-	8.62	-0.08	500	21,027
PRMM23	7.22	7.28	7.22	7.28	7.22	7.28	0.16	521	10,157
PSHM23	-	-	-	-	-	12.42	0.1	-	346
PSLM23	13.68	13.68	13.5	13.50	13.61	13.50	-0.08	413	2,800
PTGM23	14	14.00	13.79	13.79	13.92	13.82	-0.18	1,608	15,873
PTTEPM23	156	159.80	155.92	158.89	157.66	158.80	7.8	1,666	3,068
PTTGCM23	46.8	46.80	46.3	46.42	46.53	46.42	0.55	417	3,903
PTTM23	32.99	32.99	31.75	32.02	32.11	32.02	0.2	3,011	5,687
QHM23	2.35	2.40	2.34	2.40	2.35	2.40	-	167	2,745
RATCHM23	38.65	38.65	38.65	38.65	38.65	38.65	-	1	1,503
RSM23	15.2	15.20	15.12	15.12	15.16	15.12	-0.11	62	29,605
SAMARTM23	4.2	4.25	4.19	4.23	4.22	4.23	0.14	38	6,881
SAWADM23	50.45	51.35	50.45	51.20	51.17	51.20	0.05	167	6,302
SCBM23	99.9	99.90	99.4	99.82	99.53	99.82	0.7	501	5,282
SCCM23	315.22	317.56	315.2	316.70	316.76	317.00	-0.5	192	2,045
SCGPM23	45.65	46.43	45.65	46.40	46.14	46.40	-0.1	119	4,136
SGPM23	-	-	-	-	-	8.94	-0.15	-	200
SIRIM23	1.77	1.77	1.72	1.72	1.75	1.72	-0.01	1,044	26,649
SM23	1.77	1.77	1.77	1.77	1.77	1.76	0.03	1	19,420
SPALIM23	-	-	-	-	-	22.34	0.4	200	2,269
SPCGM23	-	-	-	-	-	13.56	-0.09	-	2
SPRCM23	11.2	11.20	11.2	11.20	11.20	11.20	0.23	502	1,533
STAM23	22.21	22.32	22.12	22.32	22.21	22.32	0.37	134	1,783
STECM23	12.46	12.65	12.42	12.48	12.55	12.52	-0.07	189	8,618
STGTM23	10.02	10.30	10.02	10.30	10.21	10.30	0.17	111	3,800
STPIM23	-	-	-	-	-	4.12	-0.04	-	20,416
SUPERM23	0.69	0.71	0.66	0.69	0.67	0.70	0.04	3,853	73,341
TASCOM23	19.4	19.40	19.2	19.40	19.35	19.40	-0.2	204	2,393
TCAPM23	44.43	44.43	44.43	44.43	44.43	44.43	0.18	2	122
THAIM23	-	-	-	-	-	3.36	-	-	-
THANIM23	-	-	-	-	-	3.65	0.02	-	5,522
THCOMM23	14	14.08	14	14.08	14.04	14.08	0.08	2	4,706
THGM23	-	-	-	-	-	68.07	-	-	9
TISCOM23	94	94.00	94	94.00	94.00	94.00	-5.05	2	232
TKNM23	9.55	9.55	9.3	9.30	9.50	9.30	-0.3	50	15,610
TOAM23	-	-	-	-	-	31.01	-	-	603
TOPM23	53.41	54.60	53.41	54.00	54.26	54.00	1.26	312	609
TPIPLM23	1.59	1.59	1.59	1.59	1.59	1.56	-0.02	7	4,224
TPIPPM23	-	-	-	-	-	3.34	0.02	-	3,160
TQMM23	32.87	32.87	32.87	32.87	32.87	32.87	0.02	37	7,758

blssk	เปิด	สูงสุด	ต่ำสุด	ปิด	เฉลี่ย	ราคาที่ใช้ชำระ ราคา	เปลี่ยนแปลง	ปริมาณ (สัญญา)	สถานะคงค้าง (สัญญา)
TRUEEM23X	-	-	-	-	-	8.39	0.03	-	217
TRUEM23	8.4	8.43	8.4	8.43	8.40	8.43	0.03	626	27,211
TTAM23	7.86	7.86	7.86	7.86	7.86	7.88	-	2	1,839
TTBM23	1.38	1.39	1.38	1.38	1.38	1.38	-	834	26,469
TTCLM23	-	-	-	-	-	4.52	-0.01	-	2,564
TTWM23	-	-	-	-	-	8.55	-0.09	-	380
TUM23	14.11	14.11	13.92	14.05	14.02	14.05	-0.19	872	15,504
TVOM23X	-	-	-	-	-	26.61	0.25	-	400
UNIQM23	3.9	3.90	3.86	3.86	3.89	3.86	-0.04	25	6,571
VGIM23	-	-	-	-	-	3.95	0.05	-	13,679
VNGM23	-	-	-	-	-	4.93	-	-	8,603
WHAM23	4.21	4.28	4.21	4.27	4.24	4.27	0.05	10,813	14,824
<b>Total</b>								<b>80,986</b>	<b>1,416,168</b>

Source : SET Smart

BUALUANG SECURITIES PUBLIC COMPANY LIMITED (BLS) is a subsidiary of BANGKOK BANK PUBLIC COMPANY LIMITED (BBL). This document is produced based upon sources believed to be reliable but their accuracy, completeness or correctness is not guaranteed. The statements or expressions of opinion herein were arrived at after due and careful consideration to use as information for investment. Expressions of opinion contained herein are subject to change without notice. This document is not, and should not be construed as, an offer or the solicitation of an offer to buy or sell any securities. The use of any information shall be at the sole discretion and risk of the user.

BUALUANG SECURITIES PUBLIC COMPANY LIMITED MAY BE IN RELATIONSHIP WITH THE SECURITIES IN THIS REPORT. "Opinions, projections and other information contained in this report are based upon sources believed to be accurate including the draft prospectus, but no responsibility is accepted for any loss occasioned by reliance placed upon the contents hereof. Bualuang Securities Public Company Limited may from time to time perform investment, advisory or other services for companies mentioned in this report, as well as dealing (as principal or otherwise) in, or otherwise being interested in, any securities mentioned herein, This report does not constitute a solicitation to buy or sell any securities". Investors should carefully read details in the prospectus before making investment decision.






BUALUANG SECURITIES PUBLIC COMPANY LIMITED MAY ACT AS MARKET MAKER AND ISSUER OF DWs, AND ISSUER OF STRUCTURED NOTES ON THESE SECURITIES. The company may prepare the research reports on those underlying securities. Investors should carefully read the details of the derivative warrants and structured notes in the prospectus before making investment decisions.

ADVANC	AMATA	AOT	BDMS	BH	CBG	CENTEL	CPALL	GLOBAL	GPSC	IRPC	KBANK	KCE	KTC	MINT
PTG	PTT	PTTEP	PTTGC	SCB	SPRC	TOP	WHA	ESSO	STA	BGRIM	GULF	MTC	AWC	CRC
CPF	CPN	HANA	HMPRO	IVL	OSP	SAWAD	BANPU	BCH	BTS	CK	SCC	STEC	TISCO	TU
INTUCH	RATCH	VGI	SCGP	COM7	DOHOME	JMT	CHG	TTB	BAM	BCP	AP	KTB	KKP	OR
BEM	GUNKUL	EA	SPALI	RBF	STGT	MEGA	JMART	BEC	SYNEX	BLA	KEX	RCL	SINGER	STARK
TIDLOR	FORTH	TIPH	AAV	DELTA	BCPG	SABUY	THG	CKP	TRUE	PSL				

BUALUANG SECURITIES PUBLIC COMPANY LIMITED IS OR MAY BE AN UNDERWRITER/CO-UNDERWRITER/JOINT LEAD IN RESPECT OF THE INITIAL PUBLIC OFFERING (IPO) OF SECURITIES.

Financial Advisor	Lead underwriter/ Underwriter/ Co-underwriter

**CG Rating**

Score Range	Score Range	Description
90 – 100		Excellent
80 – 89		Very Good
70 – 79		Good
60 – 69		Satisfactory
50 – 00359		Pass
Less than 50	No logo given	-

**Thailand's Private Sector Collective Action Coalition Against Corruption programme (Thai CAC) under Thai Institute of Directors**

- companies that have **declared** their intention to join CAC, and
- companies **certified** by CAC.

## CORPORATE GOVERNANCE REPORT DISCLAIMER

This research report was prepared by Bualuang Securities Public Company Limited and refers to research prepared by Morgan Stanley. Morgan Stanley does not warrant or guarantee the accuracy or completeness of its research reports. Morgan Stanley reserves copyright and other proprietary rights in the material reproduced in this report. Morgan Stanley is under no obligation to inform Bualuang Securities or you if the views or information referred to or reproduced in this research report change.

### Corporate Governance Report disclaimer

The disclosure of the survey result of the Thai Institute of Directors Association (IOD) regarding corporate governance is made pursuant to the policy of the Office of the Securities and Exchange Commission. The IOD survey is based on the information of a company listed on the Stock Exchange of Thailand and the Market for Alternative Investment disclosed to the public and able to be accessed by a general public investor. The result, therefore, is from the perspective of a third party. It is not an evaluation of operation and is not based on inside information.

The survey result is as of the date appearing in the Corporate Governance Report of Thai Listed Companies. As a result, the survey result may be changed after that date. Bualuang Securities Public Company Limited neither confirms nor certifies the accuracy of such survey results.

“Disclaimer: The disclosure of the Anti-Corruption Progress Indicators of a listed company on the Stock Exchange of Thailand, which is assessed by the relevant institution as disclosed by the Office of the Securities and Exchange Commission, is made in order to comply with the policy and sustainable development plan for the listed companies. The relevant institution made this assessment based on the information received from the listed company, as stipulated in the form for the assessment of Anti-corruption which refers to the Annual Registration Statement (Form 56-1), Annual Report (Form 56-2), or other relevant documents or reports of such listed company. The assessment result is therefore made from the perspective of a third party. It is not an assessment of operation and is not based on any inside information. Since this assessment is only the assessment result as of the date appearing in the assessment result, it may be changed after that date or when there is any change to the relevant information. Nevertheless, Bualuang Securities Public Company Limited neither confirms, verifies, nor certifies the accuracy and completeness of the assessment result.”

## BUALUANG RESEARCH – RECOMMENDATION FRAMEWORK

### STOCK RECOMMENDATIONS

**BUY:** Expected positive total returns of 15% or more over the next 12 months.

**HOLD:** Expected total returns of between -15% and +15% over the next 12 months.

**SELL:** Expected negative total returns of 15% or more over the next 12 months.

**TRADING BUY:** Expected positive total returns of 15% or more over the next 3 months.

### SECTOR RECOMMENDATIONS

**OVERWEIGHT:** The industry, as defined by the analyst's coverage universe, is expected to outperform the relevant primary market index over the next 12 months.

**NEUTRAL:** The industry, as defined by the analyst's coverage universe, is expected to perform in line with the relevant primary market index over the next 12 months.

**UNDERWEIGHT:** The industry, as defined by the analyst's coverage universe, is expected to underperform the relevant primary market index over the next 12 months.

## IMPORTANT DISCLOSURES FOR U.S. PERSONS

This research report was prepared by Bualuang Securities Public Company Limited (“BLS”). BLS is not a registered broker-dealer in the United States and, therefore, is not subject to U.S. rules regarding the preparation of research reports and the independence of research analysts. This research report is provided for distribution to “major U.S. institutional investors” in reliance on the exemption from registration provided by Rule 15a-6 of the U.S. Securities Exchange Act of 1934, as amended (the “Exchange Act”).

Under no circumstances should any recipient of this research report effect any transaction to buy or sell securities or related financial instruments through BLS. Rosenblatt Securities Inc. accepts responsibility for the contents of this research report, subject to the terms set out below, to the extent that it is delivered to a U.S. person other than a major U.S. institutional investor.

The analyst whose name appears in this research report is not registered or qualified as a research analyst with the Financial Industry Regulatory Authority (“FINRA”) and may not be an associated person of Rosenblatt Securities Inc. and, therefore, may not be subject to applicable restrictions under FINRA Rules on communications with a subject company, public appearances and trading securities held by a research analyst account.

## Additional Disclosures

This research report is for distribution only under such circumstances as may be permitted by applicable law. This research report has no regard to the specific investment objectives, financial situation or particular needs of any specific recipient, even if sent only to a single recipient. This research report is not guaranteed to be a complete statement or summary of any securities, markets, reports or developments referred to in this research report. Neither BLS nor any of its directors, officers, employees or agents shall have any liability, however arising, for any error, inaccuracy or incompleteness of fact or opinion in this research report or lack of care in this research report’s preparation or publication, or any losses or damages which may arise from the use of this research report.

BLS may rely on information barriers, such as “Chinese Walls” to control the flow of information within the areas, units, divisions, groups, or affiliates of BLS.

Investing in any non-U.S. securities or related financial instruments (including ADRs) discussed in this research report may present certain risks. The securities of non-U.S. issuers may not be registered with, or be subject to the regulations of, the U.S. Securities and Exchange Commission. Information on such non-U.S. securities or related financial instruments may be limited. Foreign companies may not be subject to audit and reporting standards and regulatory requirements comparable to those in effect within the United States.

The value of any investment or income from any securities or related financial instruments discussed in this research report denominated in a currency other than U.S. dollars is subject to exchange rate fluctuations that may have a positive or adverse effect on the value of or income from such securities or related financial instruments.

Past performance is not necessarily a guide to future performance and no representation or warranty, express or implied, is made by BLS with respect to future performance. Income from investments may fluctuate. The price or value of the investments to which this research report relates, either directly or indirectly, may fall or rise against the interest of investors. Any recommendation or opinion contained in this research report may become outdated as a consequence of changes in the environment in which the issuer of the securities under analysis operates, in addition to changes in the estimates and forecasts, assumptions and valuation methodology used herein.

No part of the content of this research report may be copied, forwarded or duplicated in any form or by any means without the prior consent of BLS and BLS accepts no liability whatsoever for the actions of third parties in this respect.