

TFEX Daily

5 เมษายน 2566

S50M23

สถานะ Long และปิดป้องกันความเสี่ยงการปรับฐาน

Gold spot

Bullish Pennantจ่อทะลุ high!

“แผนเทรด.....ยังไม่ผ่านเส้น EMA 200”

S50M23

“ดัชนีติดเส้น EMA 200 วัน รอทะลุผ่าน”

มุมมอง: ดัชนีติดเส้น EMA 200 วัน บริเวณ 970 ล่าสุดทดสอบเส้น EMA 25 วัน 955 ขณะที่ RSI ย่อพักตัว ส่งสัญญาณปรับฐานระยะสั้น

แผนเทรด... ฟังซื้อและปิดสถานะลดความเสี่ยง หากดัชนีปรับตัวลงต่ำกว่าโซนรับ ในทางตรงข้ามสถานะขายและทยอยเปิดสถานะ เนื่องจากดัชนีมีโอกาสหลุด low หลุดโซนรับ

Note:เนื่องจากตลาด TFEX มีความผันผวนมาก หากขาดทุนมากกว่า 10% ของพอร์ต แนะนำปิดสถานะ

“Bullish Pennant...จ่อทะลุ high”

Gold spot

จับสัญญาณเทรด...ทองคำ

มุมมอง: Gold spot พักตัวไม่นาน จับตาโครงสร้าง “Bullish Pennant” สามเหลี่ยมขาขึ้น จ่อทะลุ High ขณะที่เครื่องมือวัดโมเมนตัม RSI พักตัว แต่อยู่เหนือบริเวณ 50

แผนเทรด...แนะนำซื้อถูกทางและถือต่อ...ลุ้นโซนด้าน \$2,000 และ \$2,050/ออนซ์ ในทางตรงข้ามสถานะขายและปิดสถานะไปแล้ว ปัจจุบันแนะนำสัญญาณกลับตัว รอโซนด้าน

Note:ปิดความเสี่ยงหากผลตอบแทนติดลบมากกว่า 10% ของพอร์ต

วิกิจ ถาวรธรรมรัตน์

นักวิเคราะห์การลงทุนปัจจัยพื้นฐานด้านตลาดทุน/ปัจจัยทางเทคนิค

Wikij.tir@bualuang.co.th Tel. (662) 618-1336

S50M23: รับ 950/955 ต้าน 965

GFJ23: รับ 31,500 ต้าน 33,000

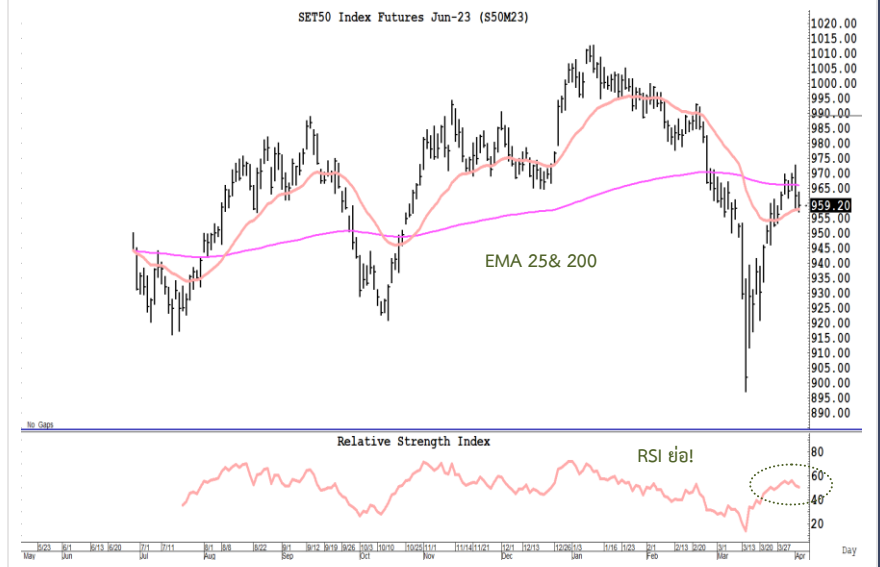
มุมมองทางเทคนิค โดย คุณธนรัตน์ อิศรกุล

นักวิเคราะห์การลงทุนปัจจัยพื้นฐานด้านหลักทรัพย์และปัจจัยทางเทคนิค

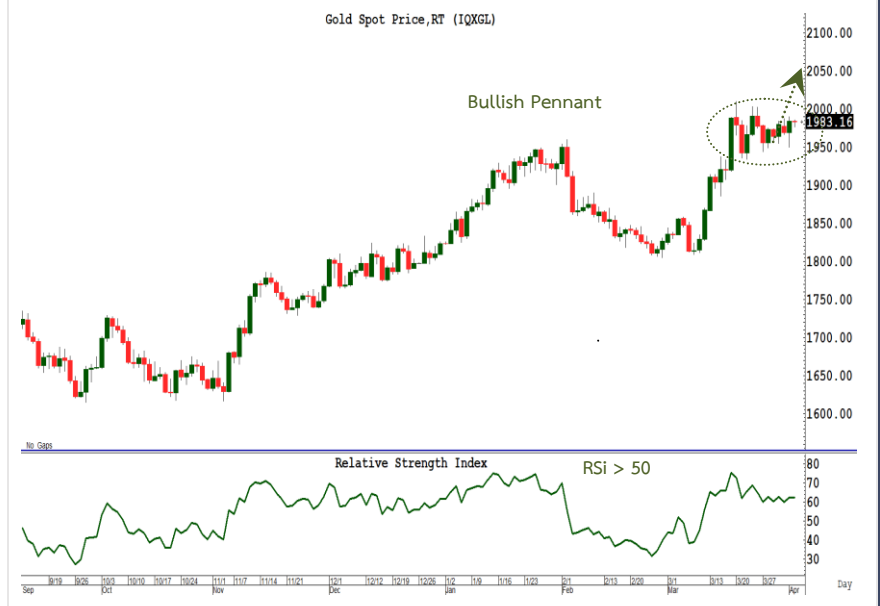
Thanarut@bualuang.co.th

Tel. (662) 618-1334

SET50 Index Future



Gold Spot



หลักทรัพย์	เปิด	สูงสุด	ต่ำสุด	ปิด	เฉลี่ย	ราคาที่ใช้ชำระ ราคา	เปลี่ยนแปลง	ปริมาณ (สัญญา)	สถานะคงค้าง (สัญญา)
SET50	966.10	967.34	958.09	961.27	963.20	N/A	-3.56	N/A	N/A
S50J23	962.60	963.80	959	959.30	960.50	959.30	-3.9	56	187
S50K23	963.5	963.50	958.9	959.40	959.30	959.40	-4	43	206
S50M23	959.5	963.50	957	959.50	959.80	959.20	-3.1	130,264	401,090
S50U23	956	960.60	954.3	956.50	956.80	956.30	-2.8	14,013	39,621
S50Z23	956.6	960.30	954.2	956.40	956.60	956.00	-2.8	1,876	20,681
S50H24	954	958.10	952.2	954.40	954.60	954.20	-2.9	744	1,525
Total								146,996	463,310

Source : SET Smart

Trading by Investor Type - SET50 Index Futures

วันที่	นักลงทุนต่างประเทศ ปริมาณ			นักลงทุนสถาบัน ปริมาณ			นักลงทุนภายในประเทศ ปริมาณ			รวม	
	ซื้อ	ขาย	สุทธิ	ซื้อ	ขาย	สุทธิ	ซื้อ	ขาย	สุทธิ	ปริมาณ	สถานะคงค้าง
04/04/2023	55,576	62,623	-7,047	27,314	24,563	2,751	64,106	59,810	4,296	146,996	463,310
03/04/2023	73,240	95,945	-22,705	43,829	35,578	8,251	107,607	93,153	14,454	224,676	450,475
31/03/2023	85,071	47,558	37,513	25,016	31,609	-6,593	46,699	77,619	-30,920	156,786	435,301
30/03/2023	82,555	80,245	2,310	36,795	35,074	1,721	91,145	95,176	-4,031	210,495	541,915
29/03/2023	196,471	190,653	5,818	38,646	39,390	-744	81,989	87,063	-5,074	317,106	698,516

4 เดือนย้อนหลัง

วันที่	นักลงทุนต่างประเทศ ปริมาณ			นักลงทุนสถาบัน ปริมาณ			นักลงทุนภายในประเทศ ปริมาณ			รวม	
	ซื้อ	ขาย	สุทธิ	ซื้อ	ขาย	สุทธิ	ซื้อ	ขาย	สุทธิ	ปริมาณ	สถานะคงค้าง
เม.ย. 2023	128,816	158,568	-29,752	71,143	60,141	11,002	171,713	152,963	18,750	371,672	463,310
มี.ค. 2023	3,051,754	2,935,366	116,388	1,110,804	1,094,251	16,553	2,675,691	2,808,632	-132,941	6,838,249	435,301
ก.พ. 2023	1,468,424	1,592,263	-123,839	668,550	650,734	17,816	2,019,686	1,913,663	106,023	4,156,660	664,829
ม.ค. 2023	1,346,543	1,446,322	-99,779	678,348	675,116	3,232	1,994,379	1,897,832	96,547	4,019,270	673,734

4 ไตรมาสย้อนหลัง

วันที่	นักลงทุนต่างประเทศ ปริมาณ			นักลงทุนสถาบัน ปริมาณ			นักลงทุนภายในประเทศ ปริมาณ			รวม	
	ซื้อ	ขาย	สุทธิ	ซื้อ	ขาย	สุทธิ	ซื้อ	ขาย	สุทธิ	ปริมาณ	สถานะคงค้าง
Q2/2023	128,816	158,568	-29,752	71,143	60,141	11,002	171,713	152,963	18,750	371,672	463,310
Q1/2023	5,866,721	5,973,951	-107,230	2,457,702	2,420,101	37,601	6,689,756	6,620,127	69,629	15,014,179	435,301
Q4/2022	5,773,579	5,666,820	106,759	2,433,982	2,462,801	-28,819	5,991,792	6,069,732	-77,940	14,199,353	563,223
Q3/2022	6,188,060	6,186,241	1,819	2,707,073	2,714,363	-7,290	6,950,031	6,944,560	5,471	15,845,164	495,136

Source : SET Smart

Metal Futures

หลักทรัพย์	เปิด	สูงสุด	ต่ำสุด	ปิด	เฉลี่ย	ราคาที่ใช้ชำระ ราคา	เปลี่ยนแปลง	ปริมาณ (สัญญา)	สถานะคงค้าง (สัญญา)
GF10J23	32,240	32,370	32,190	32,310	32,284	32,300.00	140	2766	5,280
GFJ23	32,280	32,370	32,250	32,250	32,299	32,260.00	100	20	200
GF10M23	32,280	32,440	32,230	32,370	32,336	32,360.00	160	2800	6,340
GFM23	32,280	32,400	32,280	32,310	32,317	32,310.00	100	46	224
GOM23	2,002	2,017	1,999	2,011	2,009	2,010.20	18.5	39763	18,516
SVFM23	24.15	24.45	24.14	24.37	24.30	24.37	0.28	155	995
GF10Q23	32,340	32,500	32,300	32,420	32,400	32,420.00	120	515	2,370
GFQ23	32,300	32,450	32,300	32,450	32,349	32,450.00	240	56	86
GOU23	2,027	2,044	2,026	2,037	2,035	2,037.10	19.7	7472	3,393
SVFU23	24.45	24.72	24.45	24.60	24.59	24.60	0.25	16	63

Source : SET Smart

Single Stock Futures

blssk	เปิด	สูงสุด	ต่ำสุด	ปิด	เฉลี่ย	ราคาที่ใช้ชำระ ราคา	เปลี่ยนแปลง	ปริมาณ (สัญญา)	สถานะคงค้าง (สัญญา)
AAVM23	2.8	2.81	2.76	2.80	2.80	2.80	0.01	603	70,791
ADVANCM23	212.3	213.99	212.3	213.15	213.09	213.15	0.15	226	3,295
AEONTSM23	182.3	182.30	182.3	182.30	182.30	182.29	0.45	4	258
AMATAM23	22.25	22.69	22.25	22.64	22.53	22.64	0.39	3	749
AOTM23	71.82	72.30	71.78	71.98	72.09	71.98	0.32	723	2,679
APM23	11.5	11.70	11.5	11.70	11.57	11.70	-0.29	505	4,517
AWCM23	5.77	5.77	5.72	5.72	5.76	5.72	-0.08	8	7,788
BAM23	13.49	13.79	13.49	13.79	13.52	13.79	-	12	1,085
BAMM23	13.3	13.39	13.15	13.37	13.24	13.24	-0.17	349	14,452
BANPUM23	10.28	10.30	10.16	10.21	10.22	10.21	-0.04	322	51,786
BAYM23	29.31	29.31	29.31	29.31	29.31	29.17	0.07	1	548
BBLM23	152.5	152.50	151.53	151.53	152.00	151.53	-0.07	147	3,005
BCHM23	19.42	20.42	19.42	20.42	20.19	20.42	0.13	511	19,985
BCPGM23	10.04	10.04	10.04	10.04	10.04	10.05	0.07	101	7,088
BCPM23	33.16	33.16	32.41	32.41	32.93	32.40	-0.76	516	4,274
BDM23	30.3	30.30	29.85	30.25	30.04	30.24	0.86	211	1,809
BEAUTYM23	1.23	1.23	1.23	1.23	1.23	1.23	-0.01	40	49,102
BECM23	8.58	8.63	8.4	8.60	8.47	8.60	-0.03	50	11,118
BEMM23	9.04	9.04	8.96	8.96	8.99	8.96	0.01	14	13,664
BGRIMM23	39	39.00	37.65	38.10	38.15	38.10	-1.39	931	3,479
BHM23	226.99	227.05	223.5	226.05	225.90	225.99	3.49	84	514
BJCM23	37.06	37.06	36.56	36.56	36.81	36.56	-1.11	218	2,869
BLAM23	28.12	28.16	27.92	28.16	28.12	28.16	-0.21	33	8,360
BLANDM23	-	-	-	-	-	0.98	-0.01	-	87,656
BPPM23	-	-	-	-	-	15.50	-0.3	-	1,700
BTSM23	7.2	7.20	7.2	7.20	7.20	7.21	0.09	4	13,815
CBGM23	93.1	93.10	88.8	89.00	90.11	89.06	-3.94	869	3,196
CENTELM23	56.44	56.44	56.44	56.44	56.44	56.13	-0.13	1	1,594
CHGM23	3.59	3.61	3.56	3.60	3.57	3.60	0.02	2,068	5,269
CKM23	20.3	20.44	20.3	20.44	20.42	20.44	-0.19	212	1,054
CKPM23	4.09	4.09	4.09	4.09	4.09	4.09	0.02	2	28,736
COM7M23	30	30.00	29.01	29.60	29.32	29.60	-0.2	966	8,265
CPALLM23	61.5	61.50	60.83	61.00	61.13	61.00	-0.5	573	4,717
CPFM23	21.42	21.44	21.35	21.44	21.39	21.44	-0.11	245	20,920
CPNM23	69.87	69.87	69.87	69.87	69.87	69.87	0.87	182	518
CRCM23	44.33	44.33	44.33	44.33	44.33	44.33	-0.22	1	1,822
DELTAM23	944	980.00	940	966.00	962.90	966.00	-4	209	1,447
DTACM23X	-	-	-	-	-	8.18	-0.21	-	180
EAM23	77	77.25	76.25	76.25	76.63	76.25	0.2	519	21,670
EASTWM23	-	-	-	-	-	4.91	-0.02	-	10
EGCOM23	-	-	-	-	-	154.62	-2.18	-	595
EPGM23	8.09	8.09	8.09	8.09	8.09	8.09	0.14	6	4,006
ERWM23	-	-	-	-	-	4.96	-0.02	-	3,525
ESSOM23	8.61	8.61	8.61	8.61	8.61	8.61	-0.17	502	23,111
GFPTM23	-	-	-	-	-	11.50	0.2	300	5,739
GLOBALM23X	18.5	18.50	18.2	18.20	18.33	18.20	-0.3	906	3,727
GPSCM23	67.5	67.81	66.1	66.30	66.48	66.77	-0.55	188	4,658
GULFM23	53.01	53.65	52.77	53.39	53.15	53.09	-0.01	115	14,439
GUNKULM23	4.18	4.18	4.1	4.13	4.16	4.13	-	5,129	120,682
HANAM23	51.7	51.73	50.25	50.50	51.03	50.50	-0.49	174	1,704
HMPROM23	14.06	14.11	14.01	14.01	14.05	14.01	-0.11	2,008	4,801
ICHIM23	12.62	12.62	12.06	12.06	12.34	12.12	-0.5	1,502	12,562
INTUCHM23X	-	-	-	-	-	73.70	0.26	-	116
IRPCM23	2.71	2.71	2.6	2.60	2.68	2.63	-0.09	1,667	32,511
ITDM23	1.65	1.65	1.62	1.62	1.63	1.63	-0.01	38	31,383
IVLM23	34.45	34.45	34.12	34.40	34.33	34.26	-0.7	126	12,177
JASM23	2.12	2.12	2.1	2.10	2.11	2.10	-0.07	14	74,264

blssk	เปิด	สูงสุด	ต่ำสุด	ปิด	เฉลี่ย	ราคาที่ใช้ชำระ ราคา	เปลี่ยนแปลง	ปริมาณ (สัญญา)	สถานะคงค้าง (สัญญา)
JMTM23	45.6	45.80	44	45.24	44.74	45.10	-0.7	231	5,210
KBANKM23	131.1	131.10	129.28	129.30	129.79	129.30	-1.3	343	8,074
KCEM23	45.52	45.92	45.07	45.07	45.60	45.07	-0.49	59	6,024
KEXM23	16.4	16.40	16.32	16.34	16.33	16.34	0.19	126	3,980
KKPM23	62.35	62.35	62.35	62.35	62.35	62.35	-0.52	21	3,452
KTBM23	16.07	16.19	16.04	16.19	16.07	16.19	0.03	432	18,439
KTCM23	52.36	52.65	52.1	52.65	52.15	52.65	-0.35	126	55,035
LHM23	-	-	-	-	-	9.70	0.25	-	3,316
LPNM23	-	-	-	-	-	4.65	-0.08	-	3,146
MAJORM23	16.34	16.34	16.34	16.34	16.34	16.34	-0.27	204	4,785
MBKM23	-	-	-	-	-	15.89	-0.19	-	1,248
MEGAM23	42.65	42.65	42.44	42.44	42.56	42.44	-	104	1,835
MINTM23	31.84	31.84	31.84	31.84	31.84	31.84	-0.31	101	2,134
MM23	50.9	50.90	50.9	50.90	50.90	50.90	-	44	1,404
MTCM23	34.15	34.15	33.95	33.95	34.06	33.95	-0.05	109	7,317
ORIM23	10.95	10.95	10.95	10.95	10.95	10.96	-0.62	502	5,120
ORM23	21.52	21.59	21.52	21.59	21.54	21.59	0.09	403	4,296
OSPM23	30.57	30.57	30.57	30.57	30.57	30.57	-0.09	101	2,764
PLANBM23	-	-	-	-	-	8.52	-0.1	1,000	21,027
PRMM23	7.42	7.48	7.4	7.40	7.44	7.40	0.12	71	10,228
PSHM23	-	-	-	-	-	12.43	0.01	-	346
PSLM23	14.01	14.01	13.77	13.77	13.95	13.77	0.27	160	2,960
PTGM23	13.7	13.80	13.6	13.80	13.62	13.75	-0.07	954	16,607
PTTEPM23	159.51	161.00	158.85	160.30	159.90	160.30	1.5	1,566	3,582
PTTGCM23	46.15	46.15	44.98	45.00	45.32	45.00	-1.42	272	3,931
PTTM23	31.87	31.87	31.74	31.76	31.81	31.78	-0.24	1,305	6,818
QHM23	2.37	2.37	2.33	2.33	2.35	2.33	-0.07	32	2,736
RATCHM23	38.9	38.90	38.9	38.90	38.90	38.90	0.25	101	1,604
RSM23	15.2	15.20	15.1	15.13	15.13	15.13	0.01	4,290	25,415
SAMARTM23	4.26	4.26	4.22	4.22	4.24	4.22	-0.01	10	6,881
SAWADM23	50.98	51.70	50.8	51.70	51.35	51.70	0.5	349	6,279
SCBM23	99.4	99.50	99.4	99.50	99.45	99.50	-0.32	62	5,223
SCCM23	315	315.70	314.65	315.70	315.01	315.70	-1.3	44	2,088
SCGPM23	45.45	45.88	45.03	45.88	45.26	45.88	-0.52	134	4,113
SGPM23	-	-	-	-	-	8.94	-	-	200
SIRIM23	1.77	1.82	1.76	1.80	1.78	1.80	0.08	11,311	24,123
SM23	1.77	1.77	1.76	1.76	1.76	1.72	-0.04	2	19,422
SPALIM23	-	-	-	-	-	22.35	0.01	200	2,469
SPCGM23	-	-	-	-	-	13.46	-0.1	-	2
SPRCM23	11	11.00	10.68	10.68	10.84	10.68	-0.52	2	1,535
STAM23	22.3	22.44	22.19	22.19	22.26	22.19	-0.13	112	1,883
STECM23	12.53	12.54	12.31	12.37	12.41	12.43	-0.09	276	8,735
STGTM23	10.25	10.25	10.25	10.25	10.25	10.25	-0.05	2	3,801
STPIM23	-	-	-	-	-	4.14	0.02	-	20,416
SUPERM23	0.69	0.69	0.67	0.67	0.68	0.67	-0.03	25,042	48,335
TASCOM23	19.5	19.59	19.46	19.46	19.47	19.46	0.06	219	2,409
TCAPM23	43.67	43.91	43.67	43.91	43.79	43.92	-0.51	2	122
THAIM23	-	-	-	-	-	3.36	-	-	-
THANIM23	-	-	-	-	-	3.64	-0.01	1,000	5,522
THCOMM23	13.99	14.08	13.99	14.08	14.06	14.08	-	6	4,706
THGM23	-	-	-	-	-	68.57	0.5	-	9
TISCOM23	-	-	-	-	-	100.10	6.1	-	232
TKNM23	9.31	9.31	9.31	9.31	9.31	9.31	0.01	501	15,110
TOAM23	-	-	-	-	-	30.76	-0.25	-	603
TOPM23	53.72	53.72	53.51	53.51	53.66	53.51	-0.49	45	649
TPIPLM23	-	-	-	-	-	1.54	-0.02	-	4,224
TPIPPM23	-	-	-	-	-	3.30	-0.04	-	3,160
TQMM23	32.37	32.60	32.16	32.60	32.20	32.60	-0.27	88	7,798

blssk	เปิด	สูงสุด	ต่ำสุด	ปิด	เฉลี่ย	ราคาที่ใช้ชำระ ราคา	เปลี่ยนแปลง	ปริมาณ (สัญญา)	สถานะคงค้าง (สัญญา)
TRUEEM23X	8.31	8.31	8.31	8.31	8.31	8.31	-0.08	5	217
TRUEM23	8.43	8.43	8.26	8.29	8.31	8.29	-0.14	9,064	18,242
TTAM23	7.84	7.84	7.77	7.77	7.78	7.78	-0.1	5	1,839
TTBM23	1.39	1.39	1.37	1.38	1.38	1.38	-	2,049	26,976
TTCLM23	-	-	-	-	-	4.48	-0.04	-	2,564
TTWM23	8.79	8.79	8.79	8.79	8.79	8.59	0.04	7	380
TUM23	13.95	13.95	13.71	13.84	13.80	13.84	-0.21	1,621	16,608
TVOM23X	-	-	-	-	-	26.12	-0.49	-	400
UNIQM23	-	-	-	-	-	3.82	-0.04	-	6,571
VGIM23	3.96	3.98	3.96	3.98	3.97	3.98	0.03	4,517	16,179
VNGM23	-	-	-	-	-	4.95	0.02	-	8,603
WHAM23	4.25	4.27	4.24	4.25	4.25	4.25	-0.02	1,159	15,779
Total								97,130	1,392,588

Source : SET Smart

BUALUANG SECURITIES PUBLIC COMPANY LIMITED (BLS) is a subsidiary of BANGKOK BANK PUBLIC COMPANY LIMITED (BBL). This document is produced based upon sources believed to be reliable but their accuracy, completeness or correctness is not guaranteed. The statements or expressions of opinion herein were arrived at after due and careful consideration to use as information for investment. Expressions of opinion contained herein are subject to change without notice. This document is not, and should not be construed as, an offer or the solicitation of an offer to buy or sell any securities. The use of any information shall be at the sole discretion and risk of the user.

BUALUANG SECURITIES PUBLIC COMPANY LIMITED MAY BE IN RELATIONSHIP WITH THE SECURITIES IN THIS REPORT. "Opinions, projections and other information contained in this report are based upon sources believed to be accurate including the draft prospectus, but no responsibility is accepted for any loss occasioned by reliance placed upon the contents hereof. Bualuang Securities Public Company Limited may from time to time perform investment, advisory or other services for companies mentioned in this report, as well as dealing (as principal or otherwise) in, or otherwise being interested in, any securities mentioned herein, This report does not constitute a solicitation to buy or sell any securities". Investors should carefully read details in the prospectus before making investment decision.






BUALUANG SECURITIES PUBLIC COMPANY LIMITED MAY ACT AS MARKET MAKER AND ISSUER OF DWs, AND ISSUER OF STRUCTURED NOTES ON THESE SECURITIES. The company may prepare the research reports on those underlying securities. Investors should carefully read the details of the derivative warrants and structured notes in the prospectus before making investment decisions.

ADVANC	AMATA	AOT	BDMS	BH	CBG	CENTEL	CPALL	GLOBAL	GPSC	IRPC	KBANK	KCE	KTC	MINT
PTG	PTT	PTTEP	PTTGC	SCB	SFRG	TOP	WHA	ESSO	STA	BGRIM	GULF	MTC	AWC	CRC
CPF	CPN	HANA	HMPRO	IVL	OSP	SAWAD	BANPU	BCH	BTS	CK	SCC	STEC	TISCO	TU
INTUCH	RATCH	VGI	SCGP	COM7	DOHOME	JMT	CHG	TTB	BAM	BCP	AP	KTB	KKP	OR
BEM	GUNKUL	EA	SPALI	RBF	STGT	MEGA	JMART	BEC	SYNEX	BLA	KEX	RCL	SINGER	STARK
TIDLOR	FORTH	TIPH	AAV	DELTA	BCPG	SABUY	THG	CKP	TRUE	PSL				

BUALUANG SECURITIES PUBLIC COMPANY LIMITED IS OR MAY BE AN UNDERWRITER/CO-UNDERWRITER/JOINT LEAD IN RESPECT OF THE INITIAL PUBLIC OFFERING (IPO) OF SECURITIES.

Financial Advisor	Lead underwriter/ Underwriter/ Co-underwriter

CG Rating

Score Range	Score Range	Description
90 – 100		Excellent
80 – 89		Very Good
70 – 79		Good
60 – 69		Satisfactory
50 – 00359		Pass
Less than 50	No logo given	-

**Thailand's Private Sector Collective Action Coalition Against Corruption programme (Thai CAC)
under Thai Institute of Directors**

- companies that have **declared** their intention to join CAC, and
- companies **certified** by CAC.

CORPORATE GOVERNANCE REPORT DISCLAIMER

This research report was prepared by Bualuang Securities Public Company Limited and refers to research prepared by Morgan Stanley. Morgan Stanley does not warrant or guarantee the accuracy or completeness of its research reports. Morgan Stanley reserves copyright and other proprietary rights in the material reproduced in this report. Morgan Stanley is under no obligation to inform Bualuang Securities or you if the views or information referred to or reproduced in this research report change.

Corporate Governance Report disclaimer

The disclosure of the survey result of the Thai Institute of Directors Association (IOD) regarding corporate governance is made pursuant to the policy of the Office of the Securities and Exchange Commission. The IOD survey is based on the information of a company listed on the Stock Exchange of Thailand and the Market for Alternative Investment disclosed to the public and able to be accessed by a general public investor. The result, therefore, is from the perspective of a third party. It is not an evaluation of operation and is not based on inside information.

The survey result is as of the date appearing in the Corporate Governance Report of Thai Listed Companies. As a result, the survey result may be changed after that date. Bualuang Securities Public Company Limited neither confirms nor certifies the accuracy of such survey results.

“Disclaimer: The disclosure of the Anti-Corruption Progress Indicators of a listed company on the Stock Exchange of Thailand, which is assessed by the relevant institution as disclosed by the Office of the Securities and Exchange Commission, is made in order to comply with the policy and sustainable development plan for the listed companies. The relevant institution made this assessment based on the information received from the listed company, as stipulated in the form for the assessment of Anti-corruption which refers to the Annual Registration Statement (Form 56-1), Annual Report (Form 56-2), or other relevant documents or reports of such listed company. The assessment result is therefore made from the perspective of a third party. It is not an assessment of operation and is not based on any inside information. Since this assessment is only the assessment result as of the date appearing in the assessment result, it may be changed after that date or when there is any change to the relevant information. Nevertheless, Bualuang Securities Public Company Limited neither confirms, verifies, nor certifies the accuracy and completeness of the assessment result.”

BUALUANG RESEARCH – RECOMMENDATION FRAMEWORK

STOCK RECOMMENDATIONS

BUY: Expected positive total returns of 15% or more over the next 12 months.

HOLD: Expected total returns of between -15% and +15% over the next 12 months.

SELL: Expected negative total returns of 15% or more over the next 12 months.

TRADING BUY: Expected positive total returns of 15% or more over the next 3 months.

SECTOR RECOMMENDATIONS

OVERWEIGHT: The industry, as defined by the analyst's coverage universe, is expected to outperform the relevant primary market index over the next 12 months.

NEUTRAL: The industry, as defined by the analyst's coverage universe, is expected to perform in line with the relevant primary market index over the next 12 months.

UNDERWEIGHT: The industry, as defined by the analyst's coverage universe, is expected to underperform the relevant primary market index over the next 12 months.

IMPORTANT DISCLOSURES FOR U.S. PERSONS

This research report was prepared by Bualuang Securities Public Company Limited (“BLS”). BLS is not a registered broker-dealer in the United States and, therefore, is not subject to U.S. rules regarding the preparation of research reports and the independence of research analysts. This research report is provided for distribution to “major U.S. institutional investors” in reliance on the exemption from registration provided by Rule 15a-6 of the U.S. Securities Exchange Act of 1934, as amended (the “Exchange Act”).

Under no circumstances should any recipient of this research report effect any transaction to buy or sell securities or related financial instruments through BLS. Rosenblatt Securities Inc. accepts responsibility for the contents of this research report, subject to the terms set out below, to the extent that it is delivered to a U.S. person other than a major U.S. institutional investor.

The analyst whose name appears in this research report is not registered or qualified as a research analyst with the Financial Industry Regulatory Authority (“FINRA”) and may not be an associated person of Rosenblatt Securities Inc. and, therefore, may not be subject to applicable restrictions under FINRA Rules on communications with a subject company, public appearances and trading securities held by a research analyst account.

Additional Disclosures

This research report is for distribution only under such circumstances as may be permitted by applicable law. This research report has no regard to the specific investment objectives, financial situation or particular needs of any specific recipient, even if sent only to a single recipient. This research report is not guaranteed to be a complete statement or summary of any securities, markets, reports or developments referred to in this research report. Neither BLS nor any of its directors, officers, employees or agents shall have any liability, however arising, for any error, inaccuracy or incompleteness of fact or opinion in this research report or lack of care in this research report’s preparation or publication, or any losses or damages which may arise from the use of this research report.

BLS may rely on information barriers, such as “Chinese Walls” to control the flow of information within the areas, units, divisions, groups, or affiliates of BLS.

Investing in any non-U.S. securities or related financial instruments (including ADRs) discussed in this research report may present certain risks. The securities of non-U.S. issuers may not be registered with, or be subject to the regulations of, the U.S. Securities and Exchange Commission. Information on such non-U.S. securities or related financial instruments may be limited. Foreign companies may not be subject to audit and reporting standards and regulatory requirements comparable to those in effect within the United States.

The value of any investment or income from any securities or related financial instruments discussed in this research report denominated in a currency other than U.S. dollars is subject to exchange rate fluctuations that may have a positive or adverse effect on the value of or income from such securities or related financial instruments.

Past performance is not necessarily a guide to future performance and no representation or warranty, express or implied, is made by BLS with respect to future performance. Income from investments may fluctuate. The price or value of the investments to which this research report relates, either directly or indirectly, may fall or rise against the interest of investors. Any recommendation or opinion contained in this research report may become outdated as a consequence of changes in the environment in which the issuer of the securities under analysis operates, in addition to changes in the estimates and forecasts, assumptions and valuation methodology used herein.

No part of the content of this research report may be copied, forwarded or duplicated in any form or by any means without the prior consent of BLS and BLS accepts no liability whatsoever for the actions of third parties in this respect.