

TFEX Daily

5 กันยายน 2566

SET50

“แผนซื้อสวน....และรอย่อ รอซื้อโซนรับ”

Gold spot

“สถานะซื้อถูกทาง.....และถือต่อ”

SET50: รับ 940-945 ต้าน 955

GFV23: รับ 32,000 ต้าน 33,000

มุมมองทางเทคนิค โดย คุณธนรัตน์ อิศรกุล
นักวิเคราะห์การลงทุนปัจจัยพื้นฐานด้านหลักทรัพย์และปัจจัยทางเทคนิค

Thanarut@bualuang.co.th

Tel. (662) 618-1334

“แผนซื้อสวน....รอโซนรับ”

SET50

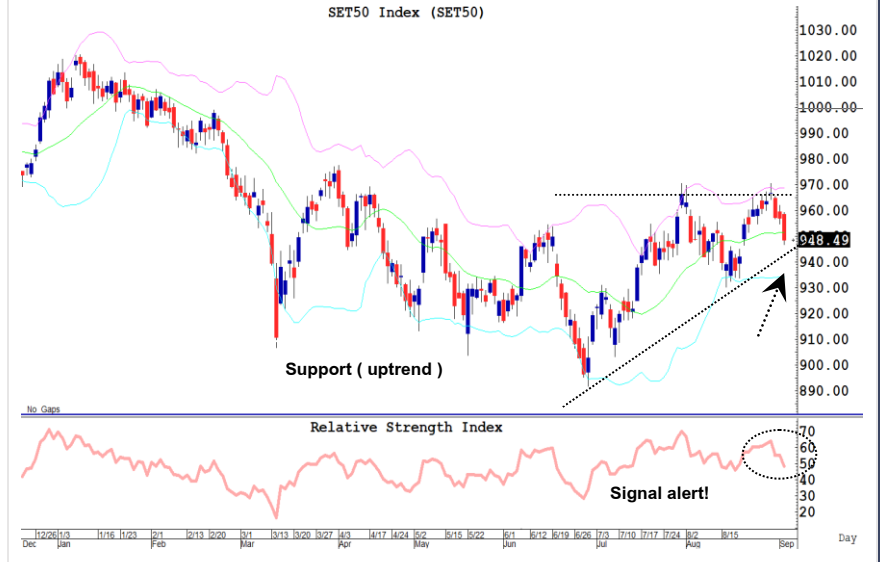
“แผนซื้อสวน....รอซื้อบริเวณโซนรับ”

มุมมอง: ดัชนีปรับตัวลงมากกว่าคาด ล่าสุดลง เข้าใกล้โซนรับ (เส้นประ) เงื่อนไขโครงสร้างขาขึ้น แนวรับต้องยืนให้ได้ ห้ามหลุด!

แผนซื้อสวน และรอจังหวะอ่อนตัวซื้อโซนรับ 940-945 จุด ในทางตรงกันข้ามสถานะขาย และทยอยปิดสถานะหากทำได้

Note: เงื่อนไขผิดทางกรณีขาดทุนมากกว่า 10% ของพอร์ต และปิดสถานะ

SET50 Index Future



“กราฟสวย....(ขาขึ้นยังไม่จบ)”

Gold spot

จับสัญญาณเทรตทองคำ....ลุ้นขึ้นทดสอบเป้า!

มุมมอง: ราคาทองคำภายหลังทะลุเส้น EMA 200 วัน \$1900/ออนซ์สำเร็จ วิ่งฉิว! ขณะที่ MACD > 0 หนุนสัญญาณ กระทั่งขาขึ้นยังไม่จบ

แผนเทรด สถานะซื้อถืออยู่....ถือต่อ เนื่องจากโครงสร้างขาขึ้น ลุ้นเป้าหมาย High เดือน 7 บริเวณ \$1,960 เป้าถัดไป \$1,980 โซนรับ \$1930/ออนซ์ (Trailing stop)

ในทางตรงข้ามสถานะ Short และปิดความเสี่ยง หรือกรณีผลตอบแทนติดลบมากกว่า 10% ของพอร์ตและปิดสถานะ

Gold Spot



วิกิจ ถาวรธนรัตน์

นักวิเคราะห์การลงทุนปัจจัยพื้นฐานด้านตลาดทุน/ปัจจัยทางเทคนิค

Wikij.tir@bualuang.co.th Tel. (662) 618-1336

SET50 Index Futures										
หลักทรัพย์	เปิด	สูงสุด	ต่ำสุด	ปิด	เฉลี่ย	ราคาที่ใช้ชำระราคา	เปลี่ยนแปลง	ปริมาณ (สัญญา)	สถานะคงค้าง (สัญญา)	
SET50	958.52	959.3	946.78	948.49	953.27	N/A	-8.52	N/A	N/A	
S50U23	955.50	955.90	944.2	946.50	949.00	946.50	-6.3	203,128	524,019	
S50V23	952	952.00	952	952.00	952.00	950.00	-5	1	58	
S50X23	958.8	958.80	948.4	948.40	952.30	948.40	-7.5	9	49	
S50Z23	957	957.40	947	948.60	950.60	948.60	-6.3	26,170	95,116	
S50H24	954.4	954.70	944	946.00	948.20	946.00	-5.5	4,679	17,458	
S50M24	952.1	955.00	942.5	944.00	946.70	944.00	-5.5	2,177	12,382	
Total								236,164	649,082	

Source : SET Smart

Trading by Investor Type - SET50 Index Futures											
5 วันย้อนหลัง											
วันที่	นักลงทุนต่างประเทศ ปริมาณ			นักลงทุนสถาบัน ปริมาณ			นักลงทุนภายในประเทศ ปริมาณ			รวม	
	ซื้อ	ขาย	สุทธิ	ซื้อ	ขาย	สุทธิ	ซื้อ	ขาย	สุทธิ	ปริมาณ	สถานะคงค้าง
04/09/2023	74,137	108,986	-34,849	36,481	33,590	2,891	125,546	93,588	31,958	236,164	649,082
01/09/2023	71,996	69,270	2,726	16,655	17,578	-923	83,781	85,584	-1,803	172,432	618,475
31/08/2023	80,766	113,125	-32,359	36,084	33,026	3,058	127,510	98,209	29,301	244,360	649,150
30/08/2023	83,385	74,658	8,727	29,264	31,927	-2,663	83,216	89,280	-6,064	195,865	618,555
29/08/2023	96,859	59,847	37,012	24,455	28,949	-4,494	78,821	111,339	-32,518	200,135	601,074

4 เดือนย้อนหลัง											
วันที่	นักลงทุนต่างประเทศ ปริมาณ			นักลงทุนสถาบัน ปริมาณ			นักลงทุนภายในประเทศ ปริมาณ			รวม	
	ซื้อ	ขาย	สุทธิ	ซื้อ	ขาย	สุทธิ	ซื้อ	ขาย	สุทธิ	ปริมาณ	สถานะคงค้าง
ก.ย. 2023	146,133	178,256	-32,123	53,136	51,168	1,968	209,327	179,172	30,155	408,596	649,082
ส.ค. 2023	1,962,003	2,028,809	-66,806	750,404	720,552	29,852	2,439,411	2,402,457	36,954	5,151,818	649,150
ก.ค. 2023	1,864,461	1,735,240	129,221	698,167	708,065	-9,898	2,216,335	2,335,658	-119,323	4,778,963	655,670
มิ.ย. 2023	2,918,155	2,910,668	7,487	924,165	930,084	-5,919	2,574,302	2,575,870	-1,568	6,416,622	678,895

4 ไตรมาสย้อนหลัง											
วันที่	นักลงทุนต่างประเทศ ปริมาณ			นักลงทุนสถาบัน ปริมาณ			นักลงทุนภายในประเทศ ปริมาณ			รวม	
	ซื้อ	ขาย	สุทธิ	ซื้อ	ขาย	สุทธิ	ซื้อ	ขาย	สุทธิ	ปริมาณ	สถานะคงค้าง
Q3/2023	3,972,597	3,942,305	30,292	1,501,707	1,479,785	21,922	4,865,073	4,917,287	-52,214	10,339,377	649,082
Q2/2023	6,049,238	6,134,886	-85,648	2,352,097	2,346,418	5,679	6,843,677	6,763,708	79,969	15,245,012	678,895
Q1/2023	5,866,721	5,973,951	-107,230	2,457,702	2,420,101	37,601	6,689,756	6,620,127	69,629	15,014,179	435,301
Q4/2022	5,773,579	5,666,820	106,759	2,433,982	2,462,801	-28,819	5,991,792	6,069,732	-77,940	14,199,353	563,223

Metal Futures										
หลักทรัพย์	เปิด	สูงสุด	ต่ำสุด	ปิด	เฉลี่ย	ราคาที่ใช้ชำระราคา	เปลี่ยนแปลง	ปริมาณ (สัญญา)	สถานะคงค้าง (สัญญา)	
GOU23	1,953	1,962	1,943	1,950	1,952	1,949.30	-3.5	34053	36,022	
SVFU23	25	25	24	24	24	24.25	-0.46	378	1,448	
GF10V23	32,450	32,690	32,410	32,650	32,567	32,640.00	180	3660	11,436	
GFV23	32,580	32,630	32,580	32,620	32,613	32,630.00	130	7	174	
GF10Z23	32,590	32,800	32,510	32,740	32,695	32,740.00	150	1258	3,402	
GFZ23	32,690.00	32,750.00	32,690.00	32,750.00	32,713.00	32,750.00	210	8	75	
GOZ23	1,985	1,993	1,975	1,981	1,984	1,981.40	-2.6	17085	19,606	
SVFZ23	25	25	25	25	25	24.75	-0.46	84	624	
GF10G24	32,610	32,870	32,580	32,790	32,695	32,790.00	160	314	435	
GFG24	32,620.00	32,620.00	32,580.00	32,580.00	32,600.00	32,580.00	-160	2	3	

Source : SET Smart

Single Stock Futures

blssk	เปิด	สูงสุด	ต่ำสุด	ปิด	เฉลี่ย	ราคาที่ใช้ชำระ ราคา	เปลี่ยนแปลง	ปริมาณ (สัญญา)	สถานะคงค้าง (สัญญา)
AAVU23	2.88	2.88	2.81	2.81	2.84	2.81	-0.02	3,577	38,027
ADVANCU23	215	215.38	212.82	213.50	213.90	213.50	-2.5	248	3,183
AEONTSU23	173	174.98	171	174.40	172.70	173.75	-2.25	13	119
AMATAU23	25.1	25.62	25.1	25.10	25.31	25.15	0.15	114	606
AOTU23	72.55	72.61	72.21	72.30	72.42	72.30	-0.2	872	4,965
APU23	-	-	-	-	-	12.28	-0.17	-	540
AWCU23	4.29	4.29	4.16	4.18	4.22	4.18	-0.07	3,835	17,902
BAMU23	11.87	11.87	11.33	11.41	11.46	11.41	-0.34	251	8,223
BANPUU23	8.07	8.12	7.79	7.89	7.91	7.89	-0.19	5,055	44,223
BAU23	16.88	16.94	16.69	16.94	16.86	16.93	-0.47	61	371
BAYU23	32.55	32.69	32.3	32.30	32.59	32.30	-0.69	29	603
BBLU23	-	-	-	-	-	167.95	0.65	140	1,589
BCHU23	19.07	19.07	18.87	18.87	18.99	18.98	-0.02	110	1,114
BCPGU23	10	10.02	9.94	10.02	9.97	10.02	-0.06	297	43,310
BCPU23	38.3	38.32	38	38.00	38.29	38.00	-0.5	75	1,140
BDMSU23	-	-	-	-	-	27.25	-0.5	700	3,045
BEAUTYU23	0.59	0.59	0.59	0.59	0.59	0.59	-0.02	133	7,405
BECU23	8.56	8.56	8.56	8.56	8.56	8.56	-0.21	31	19,861
BEMU23	8.6	8.60	8.55	8.60	8.57	8.60	-0.1	22	8,965
BGRIMU23	32.82	33.30	31.91	31.91	32.67	32.13	-1.12	1,158	3,987
BHU23	254.45	255.00	254.01	254.01	254.41	254.01	-0.43	28	936
BJCU23	33.75	33.75	33.75	33.75	33.75	33.75	-	1	1,482
BLANDU23	0.81	0.82	0.81	0.82	0.82	0.82	-	18	140,966
BLAU23	-	-	-	-	-	25.00	-0.25	-	3,335
BPPU23	-	-	-	-	-	14.68	-0.29	-	2,313
BTSU23	7.22	7.27	7.22	7.22	7.24	7.22	-0.05	11	8,071
CBGU23	89	89.00	85.1	86.80	87.68	86.80	1.3	2,076	3,827
CENTELU23	47	47.00	46.5	46.65	46.62	46.64	-0.34	36	783
CHGU23	3.19	3.20	3.15	3.18	3.17	3.18	-	543	6,257
CKPU23	3.73	3.73	3.64	3.67	3.66	3.67	-0.05	28	7,345
CKU23	23.02	23.05	23.02	23.05	23.04	23.05	0.03	2	1,112
COM7U23	32.28	32.45	32.07	32.07	32.23	32.07	-0.38	507	5,205
CPALLU23	65.2	65.40	64.5	64.51	64.96	64.51	-0.75	2,068	12,097
CPFU23	20.43	20.83	20.43	20.79	20.75	20.79	0.13	138	20,546
CPNU23	68.25	68.25	68.25	68.25	68.25	68.25	-0.05	21	908
CRCU23	40.5	40.50	39.81	39.81	40.14	39.81	-0.74	725	1,490
DELTAU23X	109.05	109.95	108.45	108.94	108.97	108.85	-1.15	13	729
DTACU23X	-	-	-	-	-	6.76	-0.1	-	5
EASTWU23	4.63	4.63	4.57	4.59	4.61	4.67	-0.08	52	716
EAU23	62.7	62.75	61.94	62.00	62.20	62.00	-0.7	345	14,825
EGCOU23	130.05	133.00	130.05	133.00	130.54	133.00	-1.23	6	858
EPGU23	7	7.10	7	7.10	7.02	7.10	0.1	6	737
ERWU23	5.75	5.75	5.6	5.60	5.72	5.66	0.05	101	1,277
ESSO23	9.77	9.77	9.77	9.77	9.77	9.77	-	3	7,795
GFPTU23	-	-	-	-	-	11.10	0.07	-	186
GLOBALU23X	18.44	18.44	18.4	18.40	18.41	18.31	-	407	1,429
GPSCU23	52.5	52.50	51.03	51.80	51.48	51.80	-0.2	240	4,513
GULFU23	47.44	47.44	46	46.45	46.54	46.45	-1.31	618	15,568
GUNKULU23	3.6	3.60	3.52	3.58	3.55	3.55	-0.05	1,506	123,109
HANAU23	62.35	62.75	61.5	61.50	62.08	61.51	-0.49	52	3,864
HMPROU23	13.46	13.46	13.46	13.46	13.46	13.46	-0.01	107	2,227
ICHU23	16.6	16.75	16.15	16.17	16.33	16.17	-0.39	87	9,026
INTUCHU23X	72.44	72.44	72.44	72.44	72.44	72.44	-	63	788
IRPCU23	2.37	2.37	2.32	2.32	2.33	2.32	-0.02	626	13,437
ITDU23	1.59	1.61	1.58	1.61	1.59	1.61	0.02	174	9,389
IVLU23	29.1	29.25	29	29.25	29.07	29.25	0.18	628	7,690
JASU23	1.99	2.00	1.98	2.00	1.99	2.00	0.01	87	47,703

blssk	เปิด	สูงสุด	ต่ำสุด	ปิด	เฉลี่ย	ราคาที่ใช้ชำระ ราคา	เปลี่ยนแปลง	ปริมาณ (สัญญา)	สถานะคงค้าง (สัญญา)
JMTU23	45.67	46.25	45.5	45.50	45.89	45.50	-0.75	75	1,420
KBANKU23	131	131.51	130.5	130.90	130.91	130.90	0.85	315	4,273
KCEU23	51.79	51.79	49.99	50.25	50.66	50.25	-1.44	432	3,099
KEXU23	8.72	8.75	8.35	8.35	8.64	8.35	-0.27	355	2,845
KKPU23	-	-	-	-	-	59.12	0.52	40	1,336
KTBU23	19.34	19.34	19.12	19.17	19.23	19.17	-0.27	447	19,057
KTCU23	48.1	48.10	46.85	46.85	47.23	46.85	-1.65	67	55,526
LHU23	8.32	8.32	8.32	8.32	8.32	8.32	-	502	7,409
LPNU23	-	-	-	-	-	4.15	-	-	214
MAJORU23	-	-	-	-	-	14.30	-0.21	-	4,199
MBKU23	-	-	-	-	-	19.28	0.08	-	278
MEGAU23	-	-	-	-	-	42.71	-0.99	-	293
MINTU23	33.38	33.40	33.38	33.38	33.38	33.38	-	4	1,393
MTCU23	40.75	40.84	39.99	40.50	40.43	40.50	-0.5	21	1,902
MU23	-	-	-	-	-	46.48	-0.99	-	296
ORIU23	10.4	10.40	10.4	10.40	10.40	10.40	-0.06	510	3,793
ORU23	20.13	20.14	19.9	19.90	20.09	19.95	-0.19	223	4,112
OSPU23X	29.57	29.57	29.57	29.57	29.57	29.57	-0.25	102	1,160
PLANBU23	-	-	-	-	-	9.26	-0.17	-	2,261
PRMU23	6.79	6.79	6.79	6.79	6.79	6.79	0.08	1	1,049
PSHU23	-	-	-	-	-	13.16	-0.09	-	307
PSLU23	9.52	9.52	9.34	9.35	9.41	9.35	-0.13	116	2,724
PTGU23	10.42	10.42	10.23	10.30	10.35	10.30	-0.13	134	9,621
PTTEPU23	163	164.00	161.5	161.50	162.57	161.53	-0.71	242	1,166
PTTGCU23	37	37.10	36.7	36.83	36.90	36.83	-0.51	761	5,749
PTTU23	34.72	34.76	34.42	34.51	34.58	34.50	-0.04	412	9,668
QHU23	-	-	-	-	-	2.27	-0.02	-	1,120
RATCHU23	-	-	-	-	-	34.20	-0.8	-	1,229
RSU23X	-	-	-	-	-	14.62	-0.18	-	16,907
SAMARTU23	-	-	-	-	-	5.76	-0.15	-	5,698
SAWADU23	50	50.00	48.75	48.75	49.47	48.75	-1.15	105	12,519
SCBU23	116.15	116.20	115.6	115.70	115.78	115.70	-	3,532	5,613
SCCU23	313	313.00	310.5	310.50	311.34	311.96	-1.8	225	1,652
SCGPU23	41.33	41.33	40.5	40.95	40.91	40.95	0.34	175	5,850
SGPU23	8.32	8.32	8.32	8.32	8.32	8.32	-0.12	14	576
SIRIU23	1.98	2.00	1.94	1.94	1.96	1.94	-0.02	252	8,599
SPALIU23	21.65	21.65	21.34	21.34	21.60	21.34	-0.29	6	1,072
SPCGU23	-	-	-	-	-	12.46	-0.1	-	12
SPRCU23	9.35	9.40	9.2	9.20	9.37	9.20	-0.02	17	2,161
STAU23	15.3	16.20	15.3	15.93	15.96	15.93	0.93	1,081	1,543
STECU23	11.83	11.83	11.62	11.75	11.71	11.75	-0.1	501	5,591
STGTU23	7.45	7.49	7.4	7.48	7.45	7.43	0.15	236	2,311
STPIU23	-	-	-	-	-	3.99	-0.12	-	20,246
SU23	-	-	-	-	-	1.14	-0.01	-	5,001
SUPERU23	0.5	0.50	0.49	0.49	0.50	0.51	-0.01	4	31,755
TASCOU23	17.1	17.10	16.62	16.62	16.74	16.62	-0.48	4	460
TCAPU23	49.49	49.49	49.49	49.49	49.49	49.49	-0.87	2	346
THAIU23	-	-	-	-	-	3.40	-	-	-
THANIU23	3.29	3.29	3.29	3.29	3.29	3.29	-0.06	10	6,225
THCOMU23	14.23	14.23	13.85	14.00	14.12	14.00	-0.59	232	6,949
THGU23	-	-	-	-	-	65.29	-0.25	-	261
TISCOU23	-	-	-	-	-	101.64	0.04	-	25
TKNU23	14.01	14.13	13.81	13.86	14.05	13.86	-0.11	75	8,028
TOAU23	26.56	26.56	26.56	26.56	26.56	26.56	-0.26	1	337
TOPU23	50.7	50.81	48	48.50	49.57	48.50	-3	865	1,449
TPIPLU23	1.53	1.53	1.53	1.53	1.53	1.55	0.02	1	1,281
TPIPPU23	3.33	3.33	3.33	3.33	3.33	3.33	-0.01	4	1,365
TQMU23	-	-	-	-	-	31.22	0.51	-	4,263

blssk	เปิด	สูงสุด	ต่ำสุด	ปิด	เฉลี่ย	ราคาที่ใช้ชำระ ราคา	เปลี่ยนแปลง	ปริมาณ (สัญญา)	สถานะคงค้าง (สัญญา)
TRUEEU23X	-	-	-	-	-	6.76	-0.1	-	55
TRUEU23	6.75	6.78	6.71	6.77	6.75	6.77	-0.13	23	18,950
TTAU23	6.47	6.47	6.42	6.42	6.46	6.42	-0.21	19	2,542
TTBU23	1.68	1.69	1.67	1.68	1.68	1.68	-	692	15,298
TTCLU23	-	-	-	-	-	4.25	-0.08	-	3,168
TTWU23	-	-	-	-	-	8.97	-	-	654
TUU23	14.29	14.33	13.82	14.22	14.13	14.22	-0.08	259	10,069
TVOU23	-	-	-	-	-	23.27	-0.19	-	116
UNIQU23	-	-	-	-	-	3.18	-0.04	-	3,174
VGIU23	3.05	3.07	2.93	2.97	3.05	2.97	-0.1	63	9,042
VNGU23	-	-	-	-	-	3.99	0.02	-	7,068
WHAU23	5.18	5.18	5.01	5.05	5.08	5.05	-0.12	2,193	6,546
Total								44,894	1,080,998

Source : SET Smart

BUALUANG SECURITIES PUBLIC COMPANY LIMITED (BLS) is a subsidiary of BANGKOK BANK PUBLIC COMPANY LIMITED (BBL). This document is produced based upon sources believed to be reliable but their accuracy, completeness or correctness is not guaranteed. The statements or expressions of opinion herein were arrived at after due and careful consideration to use as information for investment. Expressions of opinion contained herein are subject to change without notice. This document is not, and should not be construed as, an offer or the solicitation of an offer to buy or sell any securities. The use of any information shall be at the sole discretion and risk of the user.

BUALUANG SECURITIES PUBLIC COMPANY LIMITED MAY BE IN RELATIONSHIP WITH THE SECURITIES IN THIS REPORT. "Opinions, projections and other information contained in this report are based upon sources believed to be accurate including the draft prospectus, but no responsibility is accepted for any loss occasioned by reliance placed upon the contents hereof. Bualuang Securities Public Company Limited may from time to time perform investment, advisory or other services for companies mentioned in this report, as well as dealing (as principal or otherwise) in, or otherwise being interested in, any securities mentioned herein, This report does not constitute a solicitation to buy or sell any securities". Investors should carefully read details in the prospectus before making investment decision.






BUALUANG SECURITIES PUBLIC COMPANY LIMITED MAY ACT AS MARKET MAKER AND ISSUER OF DWs, AND ISSUER OF STRUCTURED NOTES ON THESE SECURITIES. The company may prepare the research reports on those underlying securities. Investors should carefully read the details of the derivative warrants and structured notes in the prospectus before making investment decisions.

ADVANC	AMATA	AOT	BDMS	BH	CBG	CENTEL	CPALL	GLOBAL	GPSC	IRPC	KBANK	KCE	KTC	MINT
PTG	PTT	PTTEP	PTTGC	SCB	SPRC	TOP	WHA	STA	BGRIM	GULF	MTC	AWC	CRC	CPF
CPN	HANA	HMPRO	IL	OSP	SAWAD	BANPU	BCH	BTS	SCC	TU	INTUCH	VGI	SCGP	COM7
DOHOME	JMT	CHG	TTB	BAM	BCP	KTB	KKP	OR	BEM	GUNKUL	EA	RBF	STGT	JMART
BEC	KEX	RCL	SINGER	TIDLOR	FORTH	DELTA	SABUY	CKP	TRUE	PSL	SIRI	TQM	CK	ERW
MEGA	SNNP	TLI	STEC	EGCO	BCPG	AAV								

BUALUANG SECURITIES PUBLIC COMPANY LIMITED IS OR MAY BE AN UNDERWRITER/CO-UNDERWRITER/JOINT LEAD IN RESPECT OF THE INITIAL PUBLIC OFFERING (IPO) OF SECURITIES.

Financial Advisor	Lead underwriter/ Underwriter/ Co-underwriter
	COCOCO

CG Rating

Score Range	Score Range	Description
90 – 100		Excellent
80 – 89		Very Good
70 – 79		Good
60 – 69		Satisfactory
50 – 00359		Pass
Less than 50	No logo given	-

Thailand's Private Sector Collective Action Coalition Against Corruption programme (Thai CAC) under Thai Institute of Directors

- companies that have **declared** their intention to join CAC, and
- companies **certified** by CAC.

CORPORATE GOVERNANCE REPORT DISCLAIMER

This research report was prepared by Bualuang Securities Public Company Limited and refers to research prepared by Morgan Stanley. Morgan Stanley does not warrant or guarantee the accuracy or completeness of its research reports. Morgan Stanley reserves copyright and other proprietary rights in the material reproduced in this report. Morgan Stanley is under no obligation to inform Bualuang Securities or you if the views or information referred to or reproduced in this research report change.

Corporate Governance Report disclaimer

The disclosure of the survey result of the Thai Institute of Directors Association (IOD) regarding corporate governance is made pursuant to the policy of the Office of the Securities and Exchange Commission. The IOD survey is based on the information of a company listed on the Stock Exchange of Thailand and the Market for Alternative Investment disclosed to the public and able to be accessed by a general public investor. The result, therefore, is from the perspective of a third party. It is not an evaluation of operation and is not based on inside information.

The survey result is as of the date appearing in the Corporate Governance Report of Thai Listed Companies. As a result, the survey result may be changed after that date. Bualuang Securities Public Company Limited neither confirms nor certifies the accuracy of such survey results.

“Disclaimer: The disclosure of the Anti-Corruption Progress Indicators of a listed company on the Stock Exchange of Thailand, which is assessed by the relevant institution as disclosed by the Office of the Securities and Exchange Commission, is made in order to comply with the policy and sustainable development plan for the listed companies. The relevant institution made this assessment based on the information received from the listed company, as stipulated in the form for the assessment of Anti-corruption which refers to the Annual Registration Statement (Form 56-1), Annual Report (Form 56-2), or other relevant documents or reports of such listed company. The assessment result is therefore made from the perspective of a third party. It is not an assessment of operation and is not based on any inside information. Since this assessment is only the assessment result as of the date appearing in the assessment result, it may be changed after that date or when there is any change to the relevant information. Nevertheless, Bualuang Securities Public Company Limited neither confirms, verifies, nor certifies the accuracy and completeness of the assessment result.”

BUALUANG RESEARCH – RECOMMENDATION FRAMEWORK

STOCK RECOMMENDATIONS

BUY: Expected positive total returns of 15% or more over the next 12 months.

HOLD: Expected total returns of between -15% and +15% over the next 12 months.

SELL: Expected negative total returns of 15% or more over the next 12 months.

TRADING BUY: Expected positive total returns of 15% or more over the next 3 months.

SECTOR RECOMMENDATIONS

OVERWEIGHT: The industry, as defined by the analyst's coverage universe, is expected to outperform the relevant primary market index over the next 12 months.

NEUTRAL: The industry, as defined by the analyst's coverage universe, is expected to perform in line with the relevant primary market index over the next 12 months.

UNDERWEIGHT: The industry, as defined by the analyst's coverage universe, is expected to underperform the relevant primary market index over the next 12 months.

IMPORTANT DISCLOSURES FOR U.S. PERSONS

This research report was prepared by Bualuang Securities Public Company Limited (“BLS”). BLS is not a registered broker-dealer in the United States and, therefore, is not subject to U.S. rules regarding the preparation of research reports and the independence of research analysts. This research report is provided for distribution to “major U.S. institutional investors” in reliance on the exemption from registration provided by Rule 15a-6 of the U.S. Securities Exchange Act of 1934, as amended (the “Exchange Act”).

Under no circumstances should any recipient of this research report effect any transaction to buy or sell securities or related financial instruments through BLS. Rosenblatt Securities Inc. accepts responsibility for the contents of this research report, subject to the terms set out below, to the extent that it is delivered to a U.S. person other than a major U.S. institutional investor.

The analyst whose name appears in this research report is not registered or qualified as a research analyst with the Financial Industry Regulatory Authority (“FINRA”) and may not be an associated person of Rosenblatt Securities Inc. and, therefore, may not be subject to applicable restrictions under FINRA Rules on communications with a subject company, public appearances and trading securities held by a research analyst account.

Additional Disclosures

This research report is for distribution only under such circumstances as may be permitted by applicable law. This research report has no regard to the specific investment objectives, financial situation or particular needs of any specific recipient, even if sent only to a single recipient. This research report is not guaranteed to be a complete statement or summary of any securities, markets, reports or developments referred to in this research report. Neither BLS nor any of its directors, officers, employees or agents shall have any liability, however arising, for any error, inaccuracy or incompleteness of fact or opinion in this research report or lack of care in this research report’s preparation or publication, or any losses or damages which may arise from the use of this research report.

BLS may rely on information barriers, such as “Chinese Walls” to control the flow of information within the areas, units, divisions, groups, or affiliates of BLS.

Investing in any non-U.S. securities or related financial instruments (including ADRs) discussed in this research report may present certain risks. The securities of non-U.S. issuers may not be registered with, or be subject to the regulations of, the U.S. Securities and Exchange Commission. Information on such non-U.S. securities or related financial instruments may be limited. Foreign companies may not be subject to audit and reporting standards and regulatory requirements comparable to those in effect within the United States.

The value of any investment or income from any securities or related financial instruments discussed in this research report denominated in a currency other than U.S. dollars is subject to exchange rate fluctuations that may have a positive or adverse effect on the value of or income from such securities or related financial instruments.

Past performance is not necessarily a guide to future performance and no representation or warranty, express or implied, is made by BLS with respect to future performance. Income from investments may fluctuate. The price or value of the investments to which this research report relates, either directly or indirectly, may fall or rise against the interest of investors. Any recommendation or opinion contained in this research report may become outdated as a consequence of changes in the environment in which the issuer of the securities under analysis operates, in addition to changes in the estimates and forecasts, assumptions and valuation methodology used herein.

No part of the content of this research report may be copied, forwarded or duplicated in any form or by any means without the prior consent of BLS and BLS accepts no liability whatsoever for the actions of third parties in this respect.