

TFEX Daily

10 พฤษภาคม 2566

S50M23

สถานะซื้อ ถูกทาง...และถือต่อ!

Gold spot

ขาขึ้นยังไม่จบ....สถานะ Long และถือต่อ

“ทะลุต้าน...สำเร็จ”

S50M23

“ทะลุต้าน เปลี่ยนโครงสร้าง ขาขึ้นรอบใหม่”

มุมมอง: ดัชนีทะลุต้าน...สำเร็จ ส่งผลให้รูปแบบการเคลื่อนที่ที่จะวิ่งขึ้นสู่กรอบบน นอกจากนี้ RSI > 50 ช่วยยืนยันภาวะความแข็งแกร่งด้านราคา

แผนเทรด.....สถานะ Long ถูกทางและถือต่อ ลุ้นโซนต้าน 955-960 จุด รับ 943-945 จุด หากย่อลงมาบริเวณซื้อรับเป็นโอกาสในการซื้อเพิ่ม

(เงื่อนไขปิดทางและปิดสถานะกรณีขาดทุนมากกว่า 10% ของพอร์ตหรือหากดัชนีต่ำกว่า 940 จุด)

“Uptrend & Bullish EMA”

Gold spot

จับสัญญาณเทรด...ทองคำ

มุมมอง: ทองคำสู้! ไม่หลุดเส้น EMA 25 วัน ขาขึ้น ยังไม่จบง่าย ๆ จุดสังเกตหากปรับตัวลงต่ำกว่า เส้นค่าเฉลี่ย จะเป็นสัญญาณกลับตัวเปลี่ยนเป็น ลง แต่! ปัจจุบันยังสู้ได้!

แผนเทรด....สถานะ Long มีอยู่และถือต่อ โซนรับ \$2,000 ต้าน \$2,050 และ \$2,100/ออนซ์ ในทางตรงกันข้ามสถานะขาย และรอ ยังไม่รีบ

Note: กรณีผลตอบแทนติดลบมากกว่า 10% ของพอร์ตหรือหลุด low ต่ำกว่า \$1980/ออนซ์และปิดสถานะ

วิกิจ ถาวรธรรมรัตน์

นักวิเคราะห์การลงทุนปัจจัยพื้นฐานด้านตลาดทุน/ปัจจัยทางเทคนิค

Wikij.tir@bualuang.co.th Tel. (662) 618-1336

S50M23: รับ 943-945 ต้าน 955-960

GFM23: รับ 32,000 ต้าน 34,000

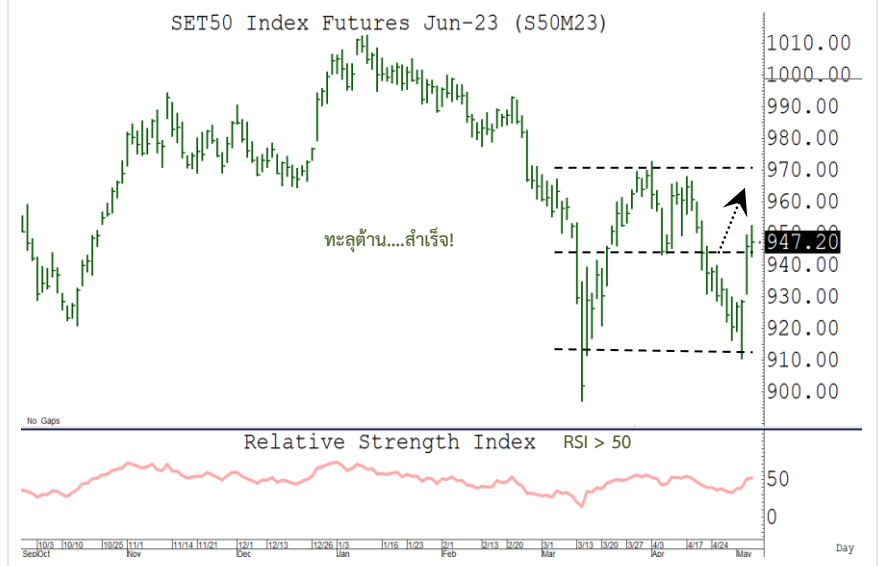
มุมมองทางเทคนิค โดย คุณธนรัตน์ อิศรกุล

นักวิเคราะห์การลงทุนปัจจัยพื้นฐานด้านหลักทรัพย์และปัจจัยทางเทคนิค

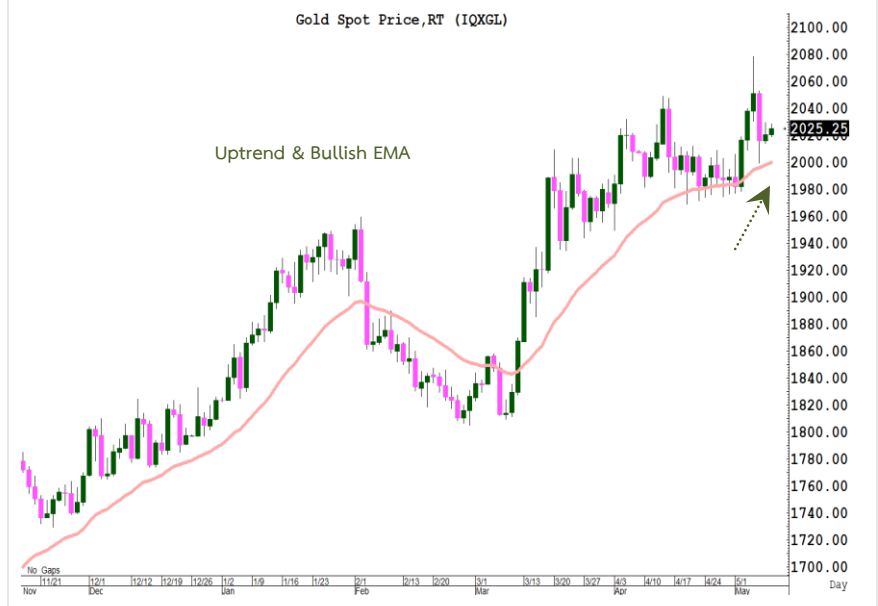
Thanarut@bualuang.co.th

Tel. (662) 618-1334

SET50 Index Future



Gold Spot



หลักทรัพย์	เปิด	สูงสุด	ต่ำสุด	ปิด	เฉลี่ย	ราคาที่ใช้ชำระ ราคา	เปลี่ยนแปลง	ปริมาณ (สัญญา)	สถานะคงค้าง (สัญญา)
SET50	949.51	953.34	943.83	949.21	948.97	N/A	-0.47	N/A	N/A
S50K23	945.10	950.00	944	948.00	946.60	948.00	2.8	18	226
S50M23	947.5	952.40	942.6	947.20	947.30	947.40	1.5	198,448	507,087
S50N23	935	949.00	935	945.90	945.00	945.90	-1.7	13	46
S50U23	945.7	949.30	940.8	944.70	945.00	944.70	0.8	13,763	61,275
S50Z23	945.9	949.60	941	944.50	945.30	945.10	0.9	3,519	26,764
S50H24	943.5	945.00	938	942.00	942.20	942.00	1	1,343	5,122
Total								217,104	600,520

Source : SET Smart

Trading by Investor Type - SET50 Index Futures

5 วันย้อนหลัง

วันที่	นักลงทุนต่างประเทศ ปริมาณ			นักลงทุนสถาบัน ปริมาณ			นักลงทุนภายในประเทศ ปริมาณ			รวม	
	ซื้อ	ขาย	สุทธิ	ซื้อ	ขาย	สุทธิ	ซื้อ	ขาย	สุทธิ	ปริมาณ	สถานะคงค้าง
09/05/2023	77,177	85,436	-8,259	39,322	30,889	8,433	100,605	100,779	-174	217,104	600,520
08/05/2023	113,235	92,723	20,512	33,694	38,999	-5,305	109,563	124,770	-15,207	256,492	607,918
03/05/2023	119,693	137,806	-18,113	70,474	63,045	7,429	160,883	150,199	10,684	351,050	516,667
02/05/2023	101,937	92,138	9,799	38,736	40,092	-1,356	90,569	99,012	-8,443	231,242	506,929
28/04/2023	83,802	79,136	4,666	38,515	42,208	-3,693	102,459	103,432	-973	224,776	500,644

4 เดือนย้อนหลัง

วันที่	นักลงทุนต่างประเทศ ปริมาณ			นักลงทุนสถาบัน ปริมาณ			นักลงทุนภายในประเทศ ปริมาณ			รวม	
	ซื้อ	ขาย	สุทธิ	ซื้อ	ขาย	สุทธิ	ซื้อ	ขาย	สุทธิ	ปริมาณ	สถานะคงค้าง
พ.ค. 2023	412,042	408,103	3,939	182,226	173,025	9,201	461,620	474,760	-13,140	1,055,888	600,520
เม.ย. 2023	1,347,692	1,425,906	-78,214	617,464	617,425	39	1,616,874	1,538,699	78,175	3,582,030	500,644
มี.ค. 2023	3,051,754	2,935,366	116,388	1,110,804	1,094,251	16,553	2,675,691	2,808,632	-132,941	6,838,249	435,301
ก.พ. 2023	1,468,424	1,592,263	-123,839	668,550	650,734	17,816	2,019,686	1,913,663	106,023	4,156,660	664,829

4 ไตรมาสย้อนหลัง

วันที่	นักลงทุนต่างประเทศ ปริมาณ			นักลงทุนสถาบัน ปริมาณ			นักลงทุนภายในประเทศ ปริมาณ			รวม	
	ซื้อ	ขาย	สุทธิ	ซื้อ	ขาย	สุทธิ	ซื้อ	ขาย	สุทธิ	ปริมาณ	สถานะคงค้าง
Q2/2023	1,759,734	1,834,009	-74,275	799,690	790,450	9,240	2,078,494	2,013,459	65,035	4,637,918	600,520
Q1/2023	5,866,721	5,973,951	-107,230	2,457,702	2,420,101	37,601	6,689,756	6,620,127	69,629	15,014,179	435,301
Q4/2022	5,773,579	5,666,820	106,759	2,433,982	2,462,801	-28,819	5,991,792	6,069,732	-77,940	14,199,353	563,223
Q3/2022	6,188,060	6,186,241	1,819	2,707,073	2,714,363	-7,290	6,950,031	6,944,560	5,471	15,845,164	495,136

Source : SET Smart

Metal Futures

หลักทรัพย์	เปิด	สูงสุด	ต่ำสุด	ปิด	เฉลี่ย	ราคาที่ใช้ชำระ ราคา	เปลี่ยนแปลง	ปริมาณ (สัญญา)	สถานะคงค้าง (สัญญา)
GF10M23	32,600	32,680	32,450	32,580	32,551	32,570.00	20	1653	5,770
GFM23	32,660	32,660	32,480	32,480	32,638	32,480.00	-80	26	292
GOM23	2,041	2,047	2,036	2,046	2,042	2,045.60	5.1	15745	28,174
SVFM23	26	26	26	26	26	25.71	-0.09	67	838
GF10Q23	32,730	32,740	32,540	32,610	32,655	32,630.00	-80	612	2,671
GFQ23	32,550.00	32,590.00	32,550.00	32,590.00	32,573.00	32,590.00	-120	7	137
GOU23	2,069	2,076	2,066	2,075	2,072	2,074.70	4.6	3499	7,245
SVFU23	26	26	26	26	26	26.10	-0.05	28	194
GF10V23	32,850	32,850	32,650	32,740	32,712	32,740.00	-100	225	420
GFV23	32,670.00	32,670.00	32,670.00	32,670.00	32,670.00	32,690.00	-230	1	17

Source : SET Smart

Single Stock Futures

blssk	เปิด	สูงสุด	ต่ำสุด	ปิด	เฉลี่ย	ราคาที่ใช้ชำระ ราคา	เปลี่ยนแปลง	ปริมาณ (สัญญา)	สถานะคงค้าง (สัญญา)
AAVM23	2.76	2.79	2.75	2.78	2.78	2.78	0.04	3,299	62,692
ADVANCM23	220	220.00	217.3	218.50	218.66	218.50	-0.9	878	3,528
AEONTSM23	194	198.16	194	198.00	196.06	198.00	4	19	179
AMATAM23	23.47	23.47	23.36	23.36	23.44	23.36	0.09	20	707
AOTM23	74	74.08	73.6	73.61	73.92	73.61	-0.14	304	2,399
APM23	12.01	12.14	12.01	12.14	12.07	12.14	-0.5	8	1,529
AWCM23	5.5	5.53	5.5	5.53	5.51	5.53	-0.11	2	7,197
BAM23	14.1	14.10	14.1	14.10	14.10	14.19	0.09	2	1,109
BAMM23	12.27	12.29	12.15	12.15	12.21	12.15	-0.05	435	14,188
BANPUM23	9.05	9.05	8.66	8.66	8.79	8.66	-0.37	3,277	49,571
BAYM23	-	-	-	-	-	28.46	-0.49	-	713
BBLM23	162	163.00	161.93	163.00	162.46	163.00	1.12	256	1,598
BCHM23	20.2	20.59	20.2	20.59	20.40	20.59	0.3	105	9,455
BCPGM23	-	-	-	-	-	9.42	0.1	-	6,877
BCPM23	30.99	31.34	30.69	30.69	30.94	30.69	0.1	821	5,142
BDM23	29.99	29.99	29.75	29.75	29.80	29.75	-0.08	305	1,796
BEAUTYM23	1.2	1.22	1.18	1.22	1.19	1.20	-	1,086	42,322
BECM23	7.68	7.68	7.53	7.63	7.59	7.63	-0.09	20,017	21,500
BEMM23	8.9	8.94	8.9	8.94	8.94	8.94	0.04	8	11,218
BGRIMM23	40.25	40.25	39.25	39.99	39.93	39.99	-0.21	475	3,631
BHM23	247.8	250.95	243.95	244.00	247.34	244.00	-4.95	408	1,093
BJCM23	39.3	39.84	39.3	39.82	39.75	39.82	1.07	415	1,283
BLAM23	27.55	27.55	26.83	26.85	27.21	26.94	-0.67	153	8,280
BLANDM23	0.94	0.94	0.94	0.94	0.94	0.94	-	509	78,103
BPPM23	-	-	-	-	-	13.94	0.01	-	1,493
BTSM23	-	-	-	-	-	7.78	-0.01	-	10,231
CBGM23	77.77	77.80	75.26	75.35	75.75	75.37	-1.4	1,093	4,803
CENTELM23	55.93	56.72	55.93	56.68	56.49	56.68	1.18	217	1,261
CHGM23	3.49	3.49	3.48	3.49	3.49	3.49	0.01	7	3,250
CKM23	21.5	21.75	21.5	21.70	21.61	21.70	0.3	266	790
CKPM23	3.8	3.84	3.8	3.82	3.82	3.82	0.02	48	28,409
COM7M23	26.33	27.25	26.33	27.25	26.89	27.25	0.64	378	4,639
CPALLM23	65	66.10	65	66.10	65.69	66.10	1.09	749	3,195
CPFM23	20.35	20.42	20.3	20.30	20.36	20.30	-0.08	323	22,817
CPNM23	71	71.30	69.87	69.87	70.68	69.87	-1.2	418	740
CRCM23	44.01	46.09	44.01	45.69	45.23	45.69	0.11	507	2,132
DELTAM23X	79.79	79.90	77.26	78.70	78.57	78.70	-0.71	86	1,299
DTACM23X	-	-	-	-	-	8.17	-0.05	-	180
EAM23	69.78	69.78	67.6	68.00	68.23	68.00	-0.73	203	22,039
EASTWM23	-	-	-	-	-	5.03	0.05	-	10
EGCOM23	154.43	154.43	154.43	154.43	154.43	158.00	2.07	31	576
EPGM23	-	-	-	-	-	7.72	0.15	-	3,502
ERWM23	4.93	4.93	4.93	4.93	4.93	4.97	0.04	1	2,198
ESSOM23	8.37	8.49	8.37	8.49	8.49	8.49	0.23	1,052	12,190
GFPTM23	-	-	-	-	-	10.80	0.1	-	3,295
GLOBALM23X	-	-	-	-	-	17.91	-0.13	200	2,599
GPSCM23	66.25	66.25	65.37	65.44	65.71	65.44	0.06	1,292	5,410
GULFM23	52.87	53.45	52.87	53.30	53.16	53.30	0.09	846	12,749
GUNKULM23	3.76	3.84	3.76	3.76	3.80	3.76	0.01	2,226	130,193
HANAM23	42.69	43.90	42.2	42.20	42.81	42.22	-0.93	155	1,162
HMPROM23	14.65	14.65	14.46	14.47	14.48	14.47	0.1	1,112	3,520
ICHIM23	11.8	11.90	11.8	11.90	11.88	11.90	0.1	106	6,023
INTUCHM23X	77.05	77.30	77.05	77.30	77.17	77.30	0.75	64	180
IRPCM23	2.4	2.50	2.4	2.50	2.44	2.48	0.08	1,654	25,894
ITDM23	1.46	1.49	1.45	1.47	1.47	1.47	0.02	28	17,940
IVLM23	34.25	34.49	34.03	34.45	34.21	34.41	0.38	642	10,314
JASM23	1.88	1.88	1.87	1.87	1.87	1.87	-0.01	26	69,335

blssk	เปิด	สูงสุด	ต่ำสุด	ปิด	เฉลี่ย	ราคาที่ใช้ชำระ ราคา	เปลี่ยนแปลง	ปริมาณ (สัญญา)	สถานะคงค้าง (สัญญา)
JMTM23	41.2	41.40	40.55	40.55	41.06	40.55	-0.59	213	5,388
KBANKM23	131.68	133.40	130.7	133.20	132.68	133.20	2.9	1,999	7,375
KCEM23	40.25	41.25	40.25	40.90	40.75	40.85	0.35	317	4,837
KEXM23	11.74	12.04	11.74	12.04	12.01	12.04	0.4	30	3,313
KKPM23	61.28	63.00	61.28	63.00	62.34	63.00	2	446	2,280
KTBM23	18.63	18.80	18.55	18.71	18.69	18.71	0.08	13,933	15,470
KTCM23	53.75	54.00	53.75	54.00	53.93	54.00	0.25	148	738
LHM23	9.43	9.43	9.43	9.43	9.43	9.43	-	8,016	9,334
LPNM23	4.65	4.67	4.65	4.67	4.66	4.67	0.06	22	3,088
MAJORM23	15.73	15.73	15.73	15.73	15.73	15.73	0.1	206	4,306
MBKM23	-	-	-	-	-	15.63	0.04	100	954
MEGAM23	41.5	41.90	40.94	40.94	41.27	40.94	-0.72	12	629
MINTM23	32.5	33.80	32.5	33.50	32.75	33.50	-0.06	529	1,508
MM23	48.15	49.13	48.15	49.13	48.64	49.13	0.33	84	994
MTCM23	37.5	37.50	36.59	36.80	36.97	36.80	0.04	346	6,661
ORIM23	11.3	11.30	11.3	11.30	11.30	11.30	-0.14	503	4,099
ORM23	22.3	22.30	22.1	22.15	22.20	22.15	-0.3	305	3,883
OSPM23	30	30.00	30	30.00	30.00	30.00	0.1	104	2,425
PLANBM23	8.7	8.70	8.7	8.70	8.70	8.70	0.09	1,502	14,531
PRMM23	6.23	6.60	6.23	6.60	6.33	6.34	0.14	6	3,312
PSHM23	-	-	-	-	-	12.40	-0.09	-	353
PSLM23	12.2	12.23	12	12.00	12.11	12.00	0.07	208	3,376
PTGM23	13.9	13.90	13.8	13.80	13.89	13.80	-0.2	214	14,735
PTTEPM23	149.99	151.00	149	149.49	149.69	149.49	-0.01	435	4,290
PTTGCM23	43.18	43.18	42.31	42.85	42.65	42.85	0.51	231	3,724
PTTM23	31.5	31.75	31.37	31.74	31.54	31.74	0.49	6,268	8,783
QHM23	-	-	-	-	-	2.35	-	-	2,116
RATCHM23	39.25	39.25	38.8	38.80	39.02	38.80	0.05	2	1,322
RSM23X	-	-	-	-	-	14.34	-0.2	-	24,179
SAMARTM23	4.2	4.24	4.19	4.24	4.22	4.25	0.13	202	6,037
SAWADM23	57.6	58.50	57.5	58.40	58.25	58.40	0.17	405	6,518
SCBM23	106.5	107.00	106.25	106.99	106.59	106.90	1.4	1,117	4,562
SCCM23	332	334.00	331.01	333.99	332.60	333.99	-0.25	158	1,771
SCGPM23	45.25	45.78	44.81	44.81	45.18	44.81	-1.19	296	4,034
SGPM23	-	-	-	-	-	8.72	-0.05	-	202
SIRIM23	1.92	2.02	1.89	2.02	1.93	2.02	0.13	6,797	14,627
SM23	-	-	-	-	-	1.62	-0.01	-	22,114
SPALIM23	20.82	20.92	20.82	20.92	20.91	21.07	0.17	314	2,780
SPCGM23	-	-	-	-	-	12.42	-0.39	-	2
SPRCM23	-	-	-	-	-	9.37	0.02	-	509
STAM23	20.15	20.15	20.14	20.14	20.15	20.20	0.05	203	1,820
STECM23	11.8	12.17	11.77	12.05	11.96	12.05	0.35	472	8,011
STGTM23	9.35	9.75	9.35	9.75	9.69	9.75	0.44	119	3,690
STPIM23	-	-	-	-	-	4.03	0.02	-	19,940
SUPERM23	0.62	0.63	0.62	0.62	0.62	0.62	-	17	43,443
TASCOM23	20.22	20.22	20.22	20.22	20.22	20.22	0.1	2	2,182
TCAPM23	46.55	46.55	45.83	45.83	46.32	45.83	0.29	119	128
THAIM23	-	-	-	-	-	3.36	-	-	-
THANIM23	-	-	-	-	-	3.59	0.01	-	3,022
THCOMM23	13.6	13.70	13.5	13.50	13.56	13.50	0.39	542	2,729
THGM23	-	-	-	-	-	68.06	0.01	-	28
TISCOM23	92.4	92.46	91.96	92.00	92.39	92.00	0.54	29	239
TKNM23	9.28	9.28	9.28	9.28	9.28	9.38	0.2	1	12,965
TOAM23	29.75	29.75	29.75	29.75	29.75	29.75	-	2	208
TOPM23	47.99	48.00	47.5	47.50	47.67	47.50	0.08	231	1,177
TPIPLM23	-	-	-	-	-	1.51	0.02	-	2,244
TPIPPM23	3.37	3.37	3.37	3.37	3.37	3.37	0.08	5	4,172
TQMM23	28	28.10	27.94	27.94	27.97	27.95	0.56	7	4,116

blssk	เปิด	สูงสุด	ต่ำสุด	ปิด	เฉลี่ย	ราคาที่ใช้ชำระ ราคา	เปลี่ยนแปลง	ปริมาณ (สัญญา)	สถานะคงค้าง (สัญญา)
TRUEEM23X	-	-	-	-	-	8.17	-0.15	-	207
TRUEM23	8.2	8.30	8.19	8.19	8.29	8.20	-	1,716	17,557
TTAM23	6.94	7.24	6.94	7.10	7.04	7.17	0.12	6	1,865
TTBM23	1.51	1.51	1.49	1.50	1.49	1.50	0.01	2,697	36,106
TTCLM23	4.13	4.21	4.1	4.21	4.19	4.21	0.16	23	2,797
TTWM23	-	-	-	-	-	8.69	0.1	-	401
TUM23	14.41	14.79	14.41	14.70	14.70	14.70	0.11	754	17,243
TVOM23X	-	-	-	-	-	26.43	0.26	-	300
UNIQM23	-	-	-	-	-	3.61	-0.02	-	6,606
VGIM23	3.12	3.20	3.1	3.20	3.14	3.20	0.06	85	6,121
VNGM23	4.58	4.58	4.48	4.58	4.54	4.58	-0.08	57	8,604
WHAM23	4.46	4.57	4.46	4.54	4.53	4.54	0.07	820	8,020
Total								101,407	1,194,942

Source : SET Smart

BUALUANG SECURITIES PUBLIC COMPANY LIMITED (BLS) is a subsidiary of BANGKOK BANK PUBLIC COMPANY LIMITED (BBL). This document is produced based upon sources believed to be reliable but their accuracy, completeness or correctness is not guaranteed. The statements or expressions of opinion herein were arrived at after due and careful consideration to use as information for investment. Expressions of opinion contained herein are subject to change without notice. This document is not, and should not be construed as, an offer or the solicitation of an offer to buy or sell any securities. The use of any information shall be at the sole discretion and risk of the user.

BUALUANG SECURITIES PUBLIC COMPANY LIMITED MAY BE IN RELATIONSHIP WITH THE SECURITIES IN THIS REPORT. "Opinions, projections and other information contained in this report are based upon sources believed to be accurate including the draft prospectus, but no responsibility is accepted for any loss occasioned by reliance placed upon the contents hereof. Bualuang Securities Public Company Limited may from time to time perform investment, advisory or other services for companies mentioned in this report, as well as dealing (as principal or otherwise) in, or otherwise being interested in, any securities mentioned herein, This report does not constitute a solicitation to buy or sell any securities". Investors should carefully read details in the prospectus before making investment decision.

BUALUANG SECURITIES PUBLIC COMPANY LIMITED MAY ACT AS MARKET MAKER AND ISSUER OF DWs, AND ISSUER OF STRUCTURED NOTES ON THESE SECURITIES. The company may prepare the research reports on those underlying securities. Investors should carefully read the details of the derivative warrants and structured notes in the prospectus before making investment decisions.

ADVANC	AMATA	AOT	BDMS	BH	CBG	CENTEL	CPALL	GLOBAL	GPSC	IRPC	KBANK	KCE	KTC	MINT
PTG	PTT	PTTEP	PTTGC	SCB	SPRC	TOP	WHA	ESSO	STA	BGRIM	GULF	MTC	AWC	CRC
CPF	CPN	HANA	HMPRO	IVL	OSP	SAWAD	BANPU	BCH	BTS	SCC	TISCO	TU	INTUCH	RATCH
VGI	SCGP	COM7	DOHOME	JMT	CHG	TTB	BAM	BCP	AP	KTB	KKP	OR	BEM	GUNKUL
EA	SPALI	RBF	STGT	JMART	BEC	BLA	KEX	RCL	SINGER	STARK	TIDLOR	FORTH	TIPH	AAV
DELTA	BCPG	SABUY	THG	CKP	TRUE	PSL	SIRI							

BUALUANG SECURITIES PUBLIC COMPANY LIMITED IS OR MAY BE AN UNDERWRITER/CO-UNDERWRITER/JOINT LEAD IN RESPECT OF THE INITIAL PUBLIC OFFERING (IPO) OF SECURITIES.

Financial Advisor	Lead underwriter/ Underwriter/ Co-underwriter
	MGC

CG Rating

Score Range	Score Range	Description
90 – 100		Excellent
80 – 89		Very Good
70 – 79		Good
60 – 69		Satisfactory
50 – 00359		Pass
Less than 50	No logo given	-

Thailand's Private Sector Collective Action Coalition Against Corruption programme (Thai CAC) under Thai Institute of Directors

- companies that have **declared** their intention to join CAC, and
- companies **certified** by CAC.

CORPORATE GOVERNANCE REPORT DISCLAIMER

This research report was prepared by Bualuang Securities Public Company Limited and refers to research prepared by Morgan Stanley. Morgan Stanley does not warrant or guarantee the accuracy or completeness of its research reports. Morgan Stanley reserves copyright and other proprietary rights in the material reproduced in this report. Morgan Stanley is under no obligation to inform Bualuang Securities or you if the views or information referred to or reproduced in this research report change.

Corporate Governance Report disclaimer

The disclosure of the survey result of the Thai Institute of Directors Association (IOD) regarding corporate governance is made pursuant to the policy of the Office of the Securities and Exchange Commission. The IOD survey is based on the information of a company listed on the Stock Exchange of Thailand and the Market for Alternative Investment disclosed to the public and able to be accessed by a general public investor. The result, therefore, is from the perspective of a third party. It is not an evaluation of operation and is not based on inside information.

The survey result is as of the date appearing in the Corporate Governance Report of Thai Listed Companies. As a result, the survey result may be changed after that date. Bualuang Securities Public Company Limited neither confirms nor certifies the accuracy of such survey results.

“Disclaimer: The disclosure of the Anti-Corruption Progress Indicators of a listed company on the Stock Exchange of Thailand, which is assessed by the relevant institution as disclosed by the Office of the Securities and Exchange Commission, is made in order to comply with the policy and sustainable development plan for the listed companies. The relevant institution made this assessment based on the information received from the listed company, as stipulated in the form for the assessment of Anti-corruption which refers to the Annual Registration Statement (Form 56-1), Annual Report (Form 56-2), or other relevant documents or reports of such listed company. The assessment result is therefore made from the perspective of a third party. It is not an assessment of operation and is not based on any inside information. Since this assessment is only the assessment result as of the date appearing in the assessment result, it may be changed after that date or when there is any change to the relevant information. Nevertheless, Bualuang Securities Public Company Limited neither confirms, verifies, nor certifies the accuracy and completeness of the assessment result.”

BUALUANG RESEARCH – RECOMMENDATION FRAMEWORK

STOCK RECOMMENDATIONS

BUY: Expected positive total returns of 15% or more over the next 12 months.

HOLD: Expected total returns of between -15% and +15% over the next 12 months.

SELL: Expected negative total returns of 15% or more over the next 12 months.

TRADING BUY: Expected positive total returns of 15% or more over the next 3 months.

SECTOR RECOMMENDATIONS

OVERWEIGHT: The industry, as defined by the analyst's coverage universe, is expected to outperform the relevant primary market index over the next 12 months.

NEUTRAL: The industry, as defined by the analyst's coverage universe, is expected to perform in line with the relevant primary market index over the next 12 months.

UNDERWEIGHT: The industry, as defined by the analyst's coverage universe, is expected to underperform the relevant primary market index over the next 12 months.

IMPORTANT DISCLOSURES FOR U.S. PERSONS

This research report was prepared by Bualuang Securities Public Company Limited (“BLS”). BLS is not a registered broker-dealer in the United States and, therefore, is not subject to U.S. rules regarding the preparation of research reports and the independence of research analysts. This research report is provided for distribution to “major U.S. institutional investors” in reliance on the exemption from registration provided by Rule 15a-6 of the U.S. Securities Exchange Act of 1934, as amended (the “Exchange Act”).

Under no circumstances should any recipient of this research report effect any transaction to buy or sell securities or related financial instruments through BLS. Rosenblatt Securities Inc. accepts responsibility for the contents of this research report, subject to the terms set out below, to the extent that it is delivered to a U.S. person other than a major U.S. institutional investor.

The analyst whose name appears in this research report is not registered or qualified as a research analyst with the Financial Industry Regulatory Authority (“FINRA”) and may not be an associated person of Rosenblatt Securities Inc. and, therefore, may not be subject to applicable restrictions under FINRA Rules on communications with a subject company, public appearances and trading securities held by a research analyst account.

Additional Disclosures

This research report is for distribution only under such circumstances as may be permitted by applicable law. This research report has no regard to the specific investment objectives, financial situation or particular needs of any specific recipient, even if sent only to a single recipient. This research report is not guaranteed to be a complete statement or summary of any securities, markets, reports or developments referred to in this research report. Neither BLS nor any of its directors, officers, employees or agents shall have any liability, however arising, for any error, inaccuracy or incompleteness of fact or opinion in this research report or lack of care in this research report’s preparation or publication, or any losses or damages which may arise from the use of this research report.

BLS may rely on information barriers, such as “Chinese Walls” to control the flow of information within the areas, units, divisions, groups, or affiliates of BLS.

Investing in any non-U.S. securities or related financial instruments (including ADRs) discussed in this research report may present certain risks. The securities of non-U.S. issuers may not be registered with, or be subject to the regulations of, the U.S. Securities and Exchange Commission. Information on such non-U.S. securities or related financial instruments may be limited. Foreign companies may not be subject to audit and reporting standards and regulatory requirements comparable to those in effect within the United States.

The value of any investment or income from any securities or related financial instruments discussed in this research report denominated in a currency other than U.S. dollars is subject to exchange rate fluctuations that may have a positive or adverse effect on the value of or income from such securities or related financial instruments.

Past performance is not necessarily a guide to future performance and no representation or warranty, express or implied, is made by BLS with respect to future performance. Income from investments may fluctuate. The price or value of the investments to which this research report relates, either directly or indirectly, may fall or rise against the interest of investors. Any recommendation or opinion contained in this research report may become outdated as a consequence of changes in the environment in which the issuer of the securities under analysis operates, in addition to changes in the estimates and forecasts, assumptions and valuation methodology used herein.

No part of the content of this research report may be copied, forwarded or duplicated in any form or by any means without the prior consent of BLS and BLS accepts no liability whatsoever for the actions of third parties in this respect.