

TFEX Daily

11 เมษายน 2566

S50M23

แข็งแกร่ง...แนะขายโซนต้าน

Gold spot

ขายก่อน แล้วรอรับกลับ!

“แผนเทรด...แข็งแกร่ง แนะขายโซนต้าน”

S50M23

“ดัชนีขึ้นแรง...เข้าใกล้โซนต้าน”

มุมมอง: ดัชนีขึ้นแรงเข้าใกล้โซนต้าน (แนวรับเดิมเปลี่ยนเป็นต้าน) ขณะที่ RSI > 50 เล็กน้อย อย่างไรก็ตามโครงสร้างระยะกลางยังเป็นรูปแบบขาลง (ไม่ผ่านโซนต้าน)

แผนเทรด... แข็งแกร่งแนะทยอยขายลืตก่าโรโซนต้านที่ 965-970 จุด ในทางตรงข้ามฝั่งขายแนะรอเปิดสถานะบริเวณโซนต้าน ดูจังหวะยังไม่รับ (เงื่อนไขติดทางหากทะลุ 970 แนะนำปิดสถานะ หรือกรณีขาดทุนมากกว่า 10% ของพอร์ต)

“ขายก่อน แล้วรอรับกลับ”

Gold spot

จับสัญญาณเทรด...ทองคำ

มุมมอง: ทองคำทะลุ high แล้วย่อ! MACD signal alert! ส่งสัญญาณเตือน divergence เล็กๆ นอกจากนี้ราคาขึ้นเข้าใกล้เป้าหมายที่ไว้ที่ \$2,050/ออนซ์

แผนเทรด...แนะขายก่อนแล้วรอรับกลับ โซนต้าน \$2,020-2,050/ออนซ์ รับ \$1,960-1,980/ออนซ์ ในทางตรงข้ามสถานะขายแนะทยอยเปิดสถานะบริเวณโซนต้าน

Note: ปิดความเสี่ยงหากผลตอบแทนติดลบมากกว่า 10% ของพอร์ต

วิกิจ ถาวรธรรมรัตน์

นักวิเคราะห์การลงทุนปัจจัยพื้นฐานด้านตลาดทุน/ปัจจัยทางเทคนิค

Wikij.tir@bualuang.co.th Tel. (662) 618-1336

S50M23: รับ 955 ต้าน 965-970

GFJ23: รับ 31,500 ต้าน 33,000

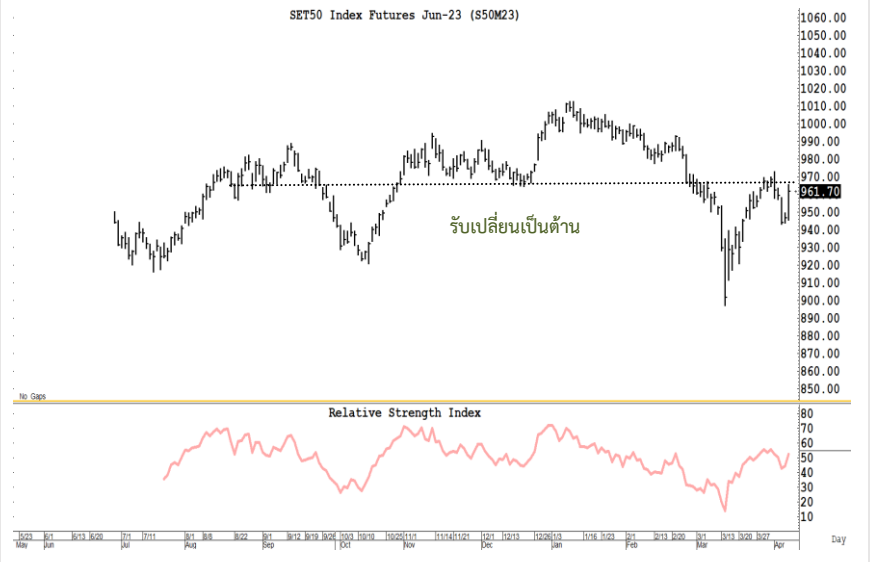
มุมมองทางเทคนิค โดย คุณธนรัตน์ อิศรกุล

นักวิเคราะห์การลงทุนปัจจัยพื้นฐานด้านหลักทรัพย์และปัจจัยทางเทคนิค

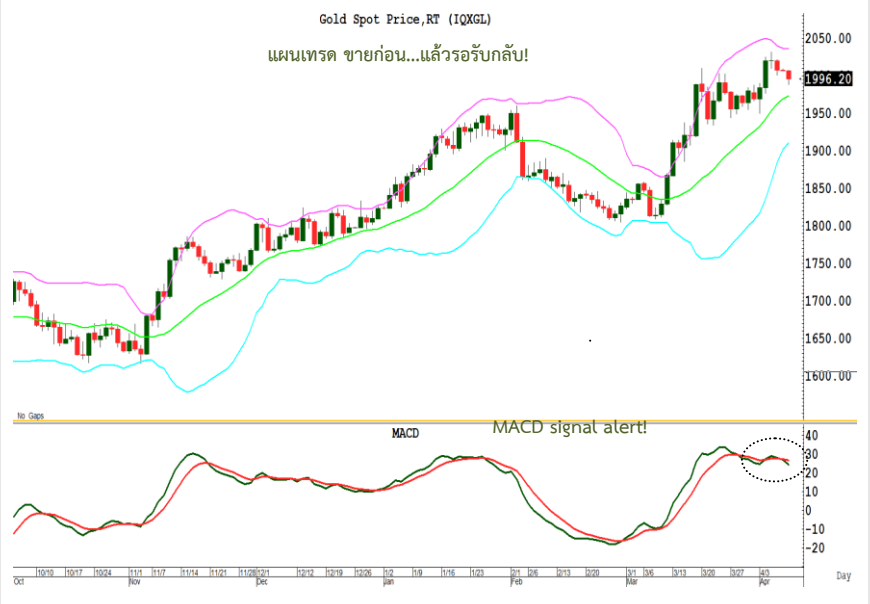
Thanarut@bualuang.co.th

Tel. (662) 618-1334

SET50 Index Future



Gold Spot



หลักทรัพย์	เปิด	สูงสุด	ต่ำสุด	ปิด	เฉลี่ย	ราคาที่ใช้ชำระ ราคา	เปลี่ยนแปลง	ปริมาณ (สัญญา)	สถานะคงค้าง (สัญญา)
SET50	950.58	966.35	946.22	963.52	956.67	N/A	12.59	N/A	N/A
S50J23	950.50	964.00	946.9	964.00	955.50	964.00	16.6	54	199
S50K23	949	964.50	946.3	962.20	954.90	962.20	14.2	48	239
S50M23	947.5	965.50	945.3	961.70	957.30	961.70	15	208,110	406,184
S50U23	942.9	961.90	941.8	958.70	953.80	958.50	15.1	26,027	40,718
S50Z23	943	961.60	942	958.50	954.60	958.40	15.1	4,461	20,924
S50H24	942.2	957.20	939.5	954.40	951.70	954.70	13.5	1,986	2,446
Total								240,686	470,710

Source : SET Smart

Trading by Investor Type - SET50 Index Futures

5 วันย้อนหลัง

วันที่	นักลงทุนต่างประเทศ ปริมาณ			นักลงทุนสถาบัน ปริมาณ			นักลงทุนภายในประเทศ ปริมาณ			รวม	
	ซื้อ	ขาย	สุทธิ	ซื้อ	ขาย	สุทธิ	ซื้อ	ขาย	สุทธิ	ปริมาณ	สถานะคงค้าง
10/04/2023	101,068	79,972	21,096	40,301	49,997	-9,696	99,317	110,717	-11,400	240,686	470,710
07/04/2023	54,091	42,704	11,387	26,339	29,038	-2,699	55,605	64,293	-8,688	136,035	467,532
05/04/2023	88,656	97,924	-9,268	42,998	39,022	3,976	110,361	105,069	5,292	242,015	476,773
04/04/2023	55,576	62,623	-7,047	27,314	24,563	2,751	64,106	59,810	4,296	146,996	463,310
03/04/2023	73,240	95,945	-22,705	43,829	35,578	8,251	107,607	93,153	14,454	224,676	450,475

4 เดือนย้อนหลัง

วันที่	นักลงทุนต่างประเทศ ปริมาณ			นักลงทุนสถาบัน ปริมาณ			นักลงทุนภายในประเทศ ปริมาณ			รวม	
	ซื้อ	ขาย	สุทธิ	ซื้อ	ขาย	สุทธิ	ซื้อ	ขาย	สุทธิ	ปริมาณ	สถานะคงค้าง
เม.ย. 2023	372,631	379,168	-6,537	180,781	178,198	2,583	436,996	433,042	3,954	990,408	470,710
มี.ค. 2023	3,051,754	2,935,366	116,388	1,110,804	1,094,251	16,553	2,675,691	2,808,632	-132,941	6,838,249	435,301
ก.พ. 2023	1,468,424	1,592,263	-123,839	668,550	650,734	17,816	2,019,686	1,913,663	106,023	4,156,660	664,829
ม.ค. 2023	1,346,543	1,446,322	-99,779	678,348	675,116	3,232	1,994,379	1,897,832	96,547	4,019,270	673,734

4 ไตรมาสย้อนหลัง

วันที่	นักลงทุนต่างประเทศ ปริมาณ			นักลงทุนสถาบัน ปริมาณ			นักลงทุนภายในประเทศ ปริมาณ			รวม	
	ซื้อ	ขาย	สุทธิ	ซื้อ	ขาย	สุทธิ	ซื้อ	ขาย	สุทธิ	ปริมาณ	สถานะคงค้าง
Q2/2023	372,631	379,168	-6,537	180,781	178,198	2,583	436,996	433,042	3,954	990,408	470,710
Q1/2023	5,866,721	5,973,951	-107,230	2,457,702	2,420,101	37,601	6,689,756	6,620,127	69,629	15,014,179	435,301
Q4/2022	5,773,579	5,666,820	106,759	2,433,982	2,462,801	-28,819	5,991,792	6,069,732	-77,940	14,199,353	563,223
Q3/2022	6,188,060	6,186,241	1,819	2,707,073	2,714,363	-7,290	6,950,031	6,944,560	5,471	15,845,164	495,136

Source : SET Smart

Metal Futures

หลักทรัพย์	เปิด	สูงสุด	ต่ำสุด	ปิด	เฉลี่ย	ราคาที่ใช้ชำระ ราคา	เปลี่ยนแปลง	ปริมาณ (สัญญา)	สถานะคงค้าง (สัญญา)
GF10J23	32,720	32,720	32,510	32,650	32,574	32,670.00	-70	918	4,477
GFJ23	32,660	32,660	32,510	32,520	32,527	32,520.00	-160	39	233
GF10M23	32,800	32,800	32,590	32,770	32,681	32,750.00	-70	482	5,954
GFM23	32,730	32,730	32,600	32,730	32,666	32,620.00	-160	59	228
GOM23	2,050	2,050	2,014	2,026	2,023	2,025.80	-21.3	14170	19,967
SVFM23	25.31	25.31	24.95	25.15	25.03	25.15	-0.09	30	900
GF10Q23	32,860	32,860	32,660	32,810	32,745	32,810.00	-80	98	2,380
GFQ23	32,680	32,750	32,670	32,750	32,708	32,760.00	-120	36	86
GOU23	2,075	2,078	2,042	2,053	2,052	2,053.30	-21.5	3814	4,120
SVFU23	26.30	26.30	25.32	25.32	25.52	25.32	-0.19	5	93

Source : SET Smart

Single Stock Futures

blssk	เปิด	สูงสุด	ต่ำสุด	ปิด	เฉลี่ย	ราคาที่ใช้ชำระ ราคา	เปลี่ยนแปลง	ปริมาณ (สัญญา)	สถานะคงค้าง (สัญญา)	
AAVM23	2.79	2.80	2.79	2.79	2.79	2.79	0.04	507	70,191	
ADVANCM23	210.53	213.53	210.15	213.00	212.59	213.00	2.9	682	3,652	
AEONTSM23	179.83	182.50	179.83	182.33	181.81	182.33	3.68	8	231	
AMATAM23	22.44	22.60	22.44	22.60	22.48	22.60	0.18	5	954	
AOTM23	71.52	72.45	71.52	72.40	71.97	72.40	0.48	202	2,464	
APM23	-	-	-	-	-	-	12.10	0.8	4,514	
AWCM23	5.56	5.69	5.56	5.61	5.64	5.61	0.04	181	7,797	
BAM23	-	-	-	-	-	-	13.25	-0.2	591	
BAMM23	13.23	13.38	13.23	13.30	13.23	13.30	0.15	1,003	13,196	
BANPUM23	10.1	10.25	10.03	10.20	10.16	10.20	0.1	14,736	48,930	
BAYM23	-	-	-	-	-	-	29.18	0.01	548	
BBLM23	152	152.95	151.9	152.40	152.26	152.40	1.5	66	3,016	
BCHM23	20.48	20.50	20.48	20.50	20.49	20.50	0.09	206	19,572	
BCPGM23	10.17	10.20	10.17	10.20	10.19	10.20	0.14	11	6,789	
BCPM23	31.51	31.51	31.51	31.51	31.51	31.26	0.39	1,639	5,014	
BDM23	30.25	30.69	30.25	30.69	30.32	30.63	0.63	507	1,308	
BEAUTYM23	1.22	1.25	1.22	1.23	1.23	1.23	0.01	1,182	47,949	
BECM23	8.42	8.65	8.33	8.65	8.46	8.64	0.27	10,058	21,162	
BEMM23	8.9	9.05	8.9	9.04	8.99	9.00	0.04	1,116	12,352	
BGRIMM23	39.36	39.78	39.36	39.78	39.61	39.90	0.53	22	3,178	
BHM23	231.05	235.05	231.05	235.05	233.59	235.05	6.05	190	413	
BJCM23	37.67	37.67	37.4	37.40	37.52	37.40	-	108	2,769	
BLAM23	27.35	27.37	27.35	27.37	27.37	27.37	-0.12	10	8,478	
BLANDM23	-	-	-	-	-	-	0.97	-0.02	87,651	
BPPM23	-	-	-	-	-	-	14.91	-0.19	1,700	
BTSM23	7.58	7.63	7.5	7.60	7.60	7.60	0.2	1,025	13,313	
CBGM23	88.1	89.78	88.1	89.12	89.23	89.20	1	186	3,082	
CENTELM23	55.21	55.21	54.1	54.97	54.97	54.97	-0.82	315	1,688	
CHGM23	3.58	3.58	3.53	3.58	3.55	3.58	0.02	2,008	5,798	
CKM23	21.05	21.05	20.88	20.88	20.96	20.88	0.09	402	1,540	
CKPM23	3.97	4.04	3.93	3.98	3.94	3.98	0.01	583	28,409	
COM7M23	27.45	28.14	27.3	27.75	27.59	27.75	-0.13	453	7,926	
CPALLM23	61.11	61.75	61.11	61.60	61.48	61.60	1.07	872	4,721	
CPFM23	20.71	20.93	20.56	20.85	20.70	20.85	-0.16	740	24,064	
CPNM23	-	-	-	-	-	-	70.27	0.75	60	478
CRCM23	45	45.00	45	45.00	45.00	45.00	0.2	201	1,515	
DELTAM23	929.88	963.00	893	959.00	936.62	959.62	47.12	293	1,289	
DTACM23X	-	-	-	-	-	-	8.18	-0.1	179	
EAM23	74.96	76.62	73.5	76.30	74.76	76.30	0.72	1,558	21,434	
EASTWM23	-	-	-	-	-	-	4.93	-	10	
EGCOM23	157	157.00	157	157.00	157.00	157.00	2.35	3	569	
EPGM23	8	8.00	8	8.00	8.00	8.00	0.19	6	4,000	
ERWM23	4.82	4.82	4.82	4.82	4.82	4.82	-0.02	2	3,538	
ESSOM23	8.64	8.64	8.64	8.64	8.64	8.64	-0.02	10	23,121	
GFPTM23	-	-	-	-	-	-	11.50	0.2	526	5,340
GLOBALM23X	17.76	18.00	17.76	18.00	17.91	18.02	0.33	215	2,534	
GPSCM23	68.75	68.75	67.15	68.00	67.55	68.00	1.25	198	4,665	
GULFM23	52.68	54.15	52.68	54.00	53.41	54.00	1.45	1,369	14,098	
GUNKULM23	4	4.01	3.94	3.99	3.97	3.99	-0.04	4,607	123,363	
HANAM23	48.97	50.25	48.95	49.95	49.58	49.95	1.45	236	1,696	
HMPROM23	14.2	14.31	14.2	14.31	14.24	14.30	0.09	303	4,669	
ICHIM23	12.22	12.22	12.22	12.22	12.22	12.22	0.01	201	12,678	
INTUCHM23X	73.75	74.46	73.75	74.46	73.79	74.46	1.23	16	166	
IRPCM23	2.6	2.62	2.6	2.62	2.61	2.62	-	584	32,346	
ITDM23	1.59	1.61	1.58	1.61	1.59	1.60	-	123	31,635	
IVLM23	33.94	34.44	33.58	34.44	34.13	34.44	1.04	131	12,211	
JASM23	2.06	2.06	2.02	2.02	2.04	2.02	-0.03	7	72,870	

blssk	เปิด	สูงสุด	ต่ำสุด	ปิด	เฉลี่ย	ราคาที่ใช้ชำระ ราคา	เปลี่ยนแปลง	ปริมาณ (สัญญา)	สถานะคงค้าง (สัญญา)
JMTM23	43.49	44.00	43	43.00	43.49	43.25	0.4	326	4,949
KBANKM23	128.8	130.50	128.8	129.20	129.72	129.20	0.92	954	8,789
KCEM23	44.26	45.52	44.26	45.52	45.04	45.35	1.11	137	5,457
KEXM23	17.4	17.64	17.11	17.11	17.31	17.11	0.08	26	3,522
KKPM23	61.8	62.08	61.75	62.08	61.80	62.07	0.46	111	3,424
KTBM23	16.13	16.14	16.13	16.14	16.14	16.14	0.09	292	18,712
KTCM23	54.5	54.98	54.1	54.90	54.73	54.90	-0.05	66	54,556
LHM23	9.52	9.62	9.52	9.62	9.57	9.62	-0.08	10	2,836
LPNM23	4.67	4.70	4.67	4.70	4.67	4.70	-0.02	506	2,645
MAJORM23	15.99	15.99	15.99	15.99	15.99	15.99	0.05	102	4,589
MBKM23	-	-	-	-	-	15.79	-0.1	-	1,348
MEGAM23	-	-	-	-	-	42.06	0.76	-	1,635
MINTM23	30.3	30.50	30.2	30.20	30.34	30.20	-0.29	421	2,154
MM23	50.4	50.40	50.4	50.40	50.40	50.40	0.25	2	1,347
MTCM23	34.11	34.78	34.11	34.78	34.39	34.78	1.18	336	7,168
ORIM23	11.43	11.43	11.43	11.43	11.43	11.43	0.18	1	4,627
ORM23	21.26	21.56	21.14	21.49	21.34	21.49	0.39	6	3,996
OSPM23	29.35	29.35	29.3	29.30	29.32	29.30	-0.4	2	2,494
PLANBM23	8.02	8.25	8.02	8.25	8.05	8.25	0.15	7	19,519
PRMM23	-	-	-	-	-	7.50	0.13	-	10,258
PSHM23	12.7	12.70	12.33	12.45	12.51	12.45	0.12	34	355
PSLM23	-	-	-	-	-	13.47	0.02	200	2,652
PTGM23	13.5	13.50	13.38	13.42	13.43	13.42	0.04	599	17,476
PTTEPM23	159.5	160.25	158	160.16	159.14	160.16	1.41	210	3,233
PTTGCM23	44.88	45.39	44.77	45.15	45.18	45.15	0.39	352	4,171
PTTM23	31.56	31.59	31.5	31.50	31.55	31.50	-0.07	254	6,737
QHM23	2.35	2.41	2.33	2.41	2.33	2.41	0.06	659	2,091
RATCHM23	38.4	38.40	38.4	38.40	38.40	38.40	-0.25	1	1,509
RSM23	-	-	-	-	-	15.26	0.13	500	24,971
SAMARTM23	-	-	-	-	-	4.16	-0.02	-	6,881
SAWADM23	52.11	53.89	52.11	53.75	53.48	53.75	2	600	6,256
SCBM23	98.5	99.89	98.5	99.89	99.59	99.88	0.73	126	5,071
SCCM23	315	316.00	315	316.00	315.50	316.00	2.16	62	1,976
SCGPM23	45.32	45.90	45.15	45.90	45.52	45.90	0.37	26	4,123
SGPM23	-	-	-	-	-	8.85	0.07	-	202
SIRIM23	1.74	1.77	1.74	1.76	1.76	1.76	0.02	6,058	22,863
SM23	-	-	-	-	-	1.73	-	-	19,422
SPALIM23	-	-	-	-	-	22.07	0.11	100	2,369
SPCGM23	-	-	-	-	-	13.27	0.01	-	2
SPRCM23	10.97	10.97	10.97	10.97	10.97	10.97	0.18	1	1,541
STAM23	21.39	21.39	21.35	21.35	21.36	21.35	-0.1	5	1,992
STECM23	12.13	12.44	12.13	12.28	12.29	12.30	0.09	27	8,367
STGTM23	10.14	10.15	10.02	10.15	10.12	10.15	0.11	39	3,784
STPIM23	4.05	4.05	4.05	4.05	4.05	4.05	0.03	3	20,420
SUPERM23	0.68	0.68	0.67	0.67	0.68	0.67	0.01	6	48,331
TASCOM23	19.3	19.30	19.3	19.30	19.30	19.30	-	2	2,098
TCAPM23	43.65	43.65	43.65	43.65	43.65	43.65	-0.51	3	18
THAIM23	-	-	-	-	-	3.36	-	-	-
THANIM23	3.75	3.76	3.75	3.76	3.75	3.78	0.16	2	5,022
THCOMM23	13.74	14.07	13.74	13.99	13.99	13.98	0.34	37	4,236
THGM23	-	-	-	-	-	69.57	0.5	-	9
TISCOM23	-	-	-	-	-	99.70	6.63	-	245
TKNM23	9.25	9.25	9.25	9.25	9.25	9.25	0.25	1	15,130
TOAM23	-	-	-	-	-	30.51	-0.25	-	603
TOPM23	52.6	52.60	52.6	52.60	52.60	52.60	0.25	62	1,064
TPIPLM23	1.56	1.56	1.56	1.56	1.56	1.55	0.02	1	4,224
TPIPPM23	-	-	-	-	-	3.30	0.02	-	3,160
TQMM23	32.12	32.12	32.12	32.12	32.12	32.12	0.12	22	7,743

blssk	เปิด	สูงสุด	ต่ำสุด	ปิด	เฉลี่ย	ราคาที่ใช้ชำระ ราคา	เปลี่ยนแปลง	ปริมาณ (สัญญา)	สถานะคงค้าง (สัญญา)
TRUEEM23X	8.2	8.20	8.2	8.20	8.20	8.20	-0.08	5	217
TRUEM23	8.24	8.32	8.09	8.15	8.15	8.15	-0.11	242	16,959
TTAM23	-	-	-	-	-	7.78	0.1	-	1,839
TTBM23	1.37	1.38	1.37	1.38	1.38	1.38	-	550	14,629
TTCLM23	4.45	4.45	4.45	4.45	4.45	4.45	-0.01	5	2,567
TTWM23	8.82	8.82	8.82	8.82	8.82	8.82	0.32	15	384
TUM23	13.45	13.50	13.3	13.40	13.39	13.40	-	731	21,264
TVOM23X	-	-	-	-	-	26.38	0.01	-	400
UNIQM23	3.77	3.77	3.77	3.77	3.77	3.77	0.03	3	6,574
VGIM23	4	4.02	3.98	4.02	4.00	4.02	0.02	13	14,179
VNGM23	5	5.00	4.98	4.98	4.99	4.98	0.05	2	8,604
WHAM23	4.3	4.32	4.26	4.32	4.29	4.32	0.04	2,058	14,401
Total								68,093	1,375,817

Source : SET Smart

BUALUANG SECURITIES PUBLIC COMPANY LIMITED (BLS) is a subsidiary of BANGKOK BANK PUBLIC COMPANY LIMITED (BBL). This document is produced based upon sources believed to be reliable but their accuracy, completeness or correctness is not guaranteed. The statements or expressions of opinion herein were arrived at after due and careful consideration to use as information for investment. Expressions of opinion contained herein are subject to change without notice. This document is not, and should not be construed as, an offer or the solicitation of an offer to buy or sell any securities. The use of any information shall be at the sole discretion and risk of the user.

BUALUANG SECURITIES PUBLIC COMPANY LIMITED MAY BE IN RELATIONSHIP WITH THE SECURITIES IN THIS REPORT. "Opinions, projections and other information contained in this report are based upon sources believed to be accurate including the draft prospectus, but no responsibility is accepted for any loss occasioned by reliance placed upon the contents hereof. Bualuang Securities Public Company Limited may from time to time perform investment, advisory or other services for companies mentioned in this report, as well as dealing (as principal or otherwise) in, or otherwise being interested in, any securities mentioned herein, This report does not constitute a solicitation to buy or sell any securities". Investors should carefully read details in the prospectus before making investment decision.






BUALUANG SECURITIES PUBLIC COMPANY LIMITED MAY ACT AS MARKET MAKER AND ISSUER OF DWs, AND ISSUER OF STRUCTURED NOTES ON THESE SECURITIES. The company may prepare the research reports on those underlying securities. Investors should carefully read the details of the derivative warrants and structured notes in the prospectus before making investment decisions.

ADVANC	AMATA	AOT	BDMS	BH	CBG	CENTEL	CPALL	GLOBAL	GPSC	IRPC	KBANK	KCE	KTC	MINT
PTG	PTT	PTTEP	PTTGC	SCB	SPRC	TOP	WHA	ESSO	STA	BGRIM	GULF	MTC	AWC	CRC
CPF	CPN	HANA	HMPRO	IVL	OSP	SAWAD	BANPU	BCH	BTS	CK	SCC	STEC	TISCO	TU
INTUCH	RATCH	VGI	SCGP	COM7	DOHOME	JMT	CHG	TTB	BAM	BCP	AP	KTB	KKP	OR
BEM	GUNKUL	EA	SPALI	RBF	STGT	MEGA	JMART	BEC	SYNEX	BLA	KEX	RCL	SINGER	STARK
TIDLOR	FORTH	TIPH	AAV	DELTA	BCPG	SABUY	THG	CKP	TRUE	PSL				

BUALUANG SECURITIES PUBLIC COMPANY LIMITED IS OR MAY BE AN UNDERWRITER/CO-UNDERWRITER/JOINT LEAD IN RESPECT OF THE INITIAL PUBLIC OFFERING (IPO) OF SECURITIES.

Financial Advisor	Lead underwriter/ Underwriter/ Co-underwriter
	MGC

CG Rating

Score Range	Score Range	Description
90 – 100		Excellent
80 – 89		Very Good
70 – 79		Good
60 – 69		Satisfactory
50 – 00359		Pass
Less than 50	No logo given	-

Thailand's Private Sector Collective Action Coalition Against Corruption programme (Thai CAC) under Thai Institute of Directors

- companies that have **declared** their intention to join CAC, and
- companies **certified** by CAC.

CORPORATE GOVERNANCE REPORT DISCLAIMER

This research report was prepared by Bualuang Securities Public Company Limited and refers to research prepared by Morgan Stanley. Morgan Stanley does not warrant or guarantee the accuracy or completeness of its research reports. Morgan Stanley reserves copyright and other proprietary rights in the material reproduced in this report. Morgan Stanley is under no obligation to inform Bualuang Securities or you if the views or information referred to or reproduced in this research report change.

Corporate Governance Report disclaimer

The disclosure of the survey result of the Thai Institute of Directors Association (IOD) regarding corporate governance is made pursuant to the policy of the Office of the Securities and Exchange Commission. The IOD survey is based on the information of a company listed on the Stock Exchange of Thailand and the Market for Alternative Investment disclosed to the public and able to be accessed by a general public investor. The result, therefore, is from the perspective of a third party. It is not an evaluation of operation and is not based on inside information.

The survey result is as of the date appearing in the Corporate Governance Report of Thai Listed Companies. As a result, the survey result may be changed after that date. Bualuang Securities Public Company Limited neither confirms nor certifies the accuracy of such survey results.

“Disclaimer: The disclosure of the Anti-Corruption Progress Indicators of a listed company on the Stock Exchange of Thailand, which is assessed by the relevant institution as disclosed by the Office of the Securities and Exchange Commission, is made in order to comply with the policy and sustainable development plan for the listed companies. The relevant institution made this assessment based on the information received from the listed company, as stipulated in the form for the assessment of Anti-corruption which refers to the Annual Registration Statement (Form 56-1), Annual Report (Form 56-2), or other relevant documents or reports of such listed company. The assessment result is therefore made from the perspective of a third party. It is not an assessment of operation and is not based on any inside information. Since this assessment is only the assessment result as of the date appearing in the assessment result, it may be changed after that date or when there is any change to the relevant information. Nevertheless, Bualuang Securities Public Company Limited neither confirms, verifies, nor certifies the accuracy and completeness of the assessment result.”

BUALUANG RESEARCH – RECOMMENDATION FRAMEWORK

STOCK RECOMMENDATIONS

BUY: Expected positive total returns of 15% or more over the next 12 months.

HOLD: Expected total returns of between -15% and +15% over the next 12 months.

SELL: Expected negative total returns of 15% or more over the next 12 months.

TRADING BUY: Expected positive total returns of 15% or more over the next 3 months.

SECTOR RECOMMENDATIONS

OVERWEIGHT: The industry, as defined by the analyst's coverage universe, is expected to outperform the relevant primary market index over the next 12 months.

NEUTRAL: The industry, as defined by the analyst's coverage universe, is expected to perform in line with the relevant primary market index over the next 12 months.

UNDERWEIGHT: The industry, as defined by the analyst's coverage universe, is expected to underperform the relevant primary market index over the next 12 months.

IMPORTANT DISCLOSURES FOR U.S. PERSONS

This research report was prepared by Bualuang Securities Public Company Limited (“BLS”). BLS is not a registered broker-dealer in the United States and, therefore, is not subject to U.S. rules regarding the preparation of research reports and the independence of research analysts. This research report is provided for distribution to “major U.S. institutional investors” in reliance on the exemption from registration provided by Rule 15a-6 of the U.S. Securities Exchange Act of 1934, as amended (the “Exchange Act”).

Under no circumstances should any recipient of this research report effect any transaction to buy or sell securities or related financial instruments through BLS. Rosenblatt Securities Inc. accepts responsibility for the contents of this research report, subject to the terms set out below, to the extent that it is delivered to a U.S. person other than a major U.S. institutional investor.

The analyst whose name appears in this research report is not registered or qualified as a research analyst with the Financial Industry Regulatory Authority (“FINRA”) and may not be an associated person of Rosenblatt Securities Inc. and, therefore, may not be subject to applicable restrictions under FINRA Rules on communications with a subject company, public appearances and trading securities held by a research analyst account.

Additional Disclosures

This research report is for distribution only under such circumstances as may be permitted by applicable law. This research report has no regard to the specific investment objectives, financial situation or particular needs of any specific recipient, even if sent only to a single recipient. This research report is not guaranteed to be a complete statement or summary of any securities, markets, reports or developments referred to in this research report. Neither BLS nor any of its directors, officers, employees or agents shall have any liability, however arising, for any error, inaccuracy or incompleteness of fact or opinion in this research report or lack of care in this research report’s preparation or publication, or any losses or damages which may arise from the use of this research report.

BLS may rely on information barriers, such as “Chinese Walls” to control the flow of information within the areas, units, divisions, groups, or affiliates of BLS.

Investing in any non-U.S. securities or related financial instruments (including ADRs) discussed in this research report may present certain risks. The securities of non-U.S. issuers may not be registered with, or be subject to the regulations of, the U.S. Securities and Exchange Commission. Information on such non-U.S. securities or related financial instruments may be limited. Foreign companies may not be subject to audit and reporting standards and regulatory requirements comparable to those in effect within the United States.

The value of any investment or income from any securities or related financial instruments discussed in this research report denominated in a currency other than U.S. dollars is subject to exchange rate fluctuations that may have a positive or adverse effect on the value of or income from such securities or related financial instruments.

Past performance is not necessarily a guide to future performance and no representation or warranty, express or implied, is made by BLS with respect to future performance. Income from investments may fluctuate. The price or value of the investments to which this research report relates, either directly or indirectly, may fall or rise against the interest of investors. Any recommendation or opinion contained in this research report may become outdated as a consequence of changes in the environment in which the issuer of the securities under analysis operates, in addition to changes in the estimates and forecasts, assumptions and valuation methodology used herein.

No part of the content of this research report may be copied, forwarded or duplicated in any form or by any means without the prior consent of BLS and BLS accepts no liability whatsoever for the actions of third parties in this respect.