

TFEX Daily

12 พฤษภาคม 2566

S50M23

สถานะซื้อและถือต่อ...ยังไม่หลุดโซนรับ!

Gold spot

สถานะ Long และถือต่อ

“ชนเส้นแนวโน้ม...ชนต้าน”

S50M23

“ติดโซนต้าน.....แต่คาดย่อไม่ลึก

มุมมอง: ดัชนีทดสอบโซนต้าน...เส้นแนวโน้ม ล่าสุดยังไม่ผ่าน ย่อลงเล็กน้อย นอกจากนี้ RSI ชนต้านเช่นเดียวกัน

แผนเทรด..... สถานะ Long และถือต่อ ยังไม่รับขาย ลุ้นทะลุโซนต้าน 955 รับ 943 จุด เงื่อนไขผิดทางกรณีขาดทุนมากกว่า 10% ของพอร์ตหรือหากดัชนีลงต่ำกว่า 940 จุด แนะนำปิดสถานะ

“พักตัวอยู่เหนือเส้น EMA 25 days”

Gold spot

จับสัญญาณเทรด...ทองคำ

มุมมอง: ทองคำพักตัว แต่ยังคงยืนเหนือเส้น EMA 25 วัน ได้อย่างแข็งแกร่ง ยืนยันโครงสร้างขาขึ้นระยะกลาง อย่างไรก็ตามหากสังเกตจากโครงสร้างในอดีตชี้ว่า กรณีปรับตัวลงต่ำกว่า เส้นค่าเฉลี่ยจะเป็นจุดเปลี่ยนขาลง แต่ปัจจุบันสู้ได้

แผนเทรด....สถานะ Long มีอยู่และถือต่อ โซนรับ \$2,000 ด้าน \$2,050 และ \$2,100/ออนซ์ ในทางตรงกันข้ามสถานะขาย และรอ ยังไม่รับ

Note: กรณีผลตอบแทนติดลบมากกว่า 10% ของพอร์ตหรือหลุด low ต่ำกว่า \$1980/ออนซ์แนะนำให้ปิดสถานะ

วิกิจ ถาวรรัตน์

นักวิเคราะห์การลงทุนปัจจัยพื้นฐานด้านตลาดทุน/ปัจจัยทางเทคนิค

Wikij.tir@bualuang.co.th Tel. (662) 618-1336

S50M23: รับ 943 ด้าน 955

GFM23: รับ 32,000 ด้าน 34,000

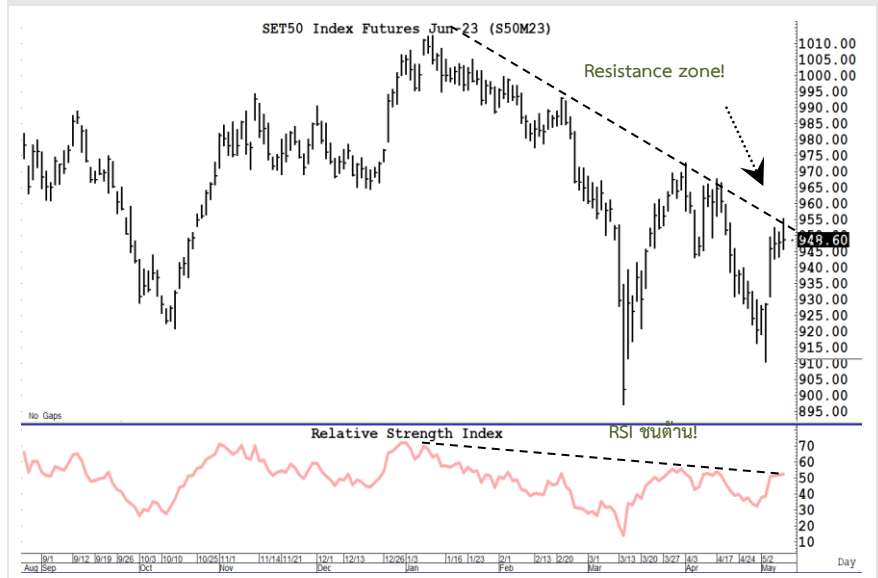
มุมมองทางเทคนิค โดย คุณธนรัตน์ อิศรกุล

นักวิเคราะห์การลงทุนปัจจัยพื้นฐานด้านหลักทรัพย์และปัจจัยทางเทคนิค

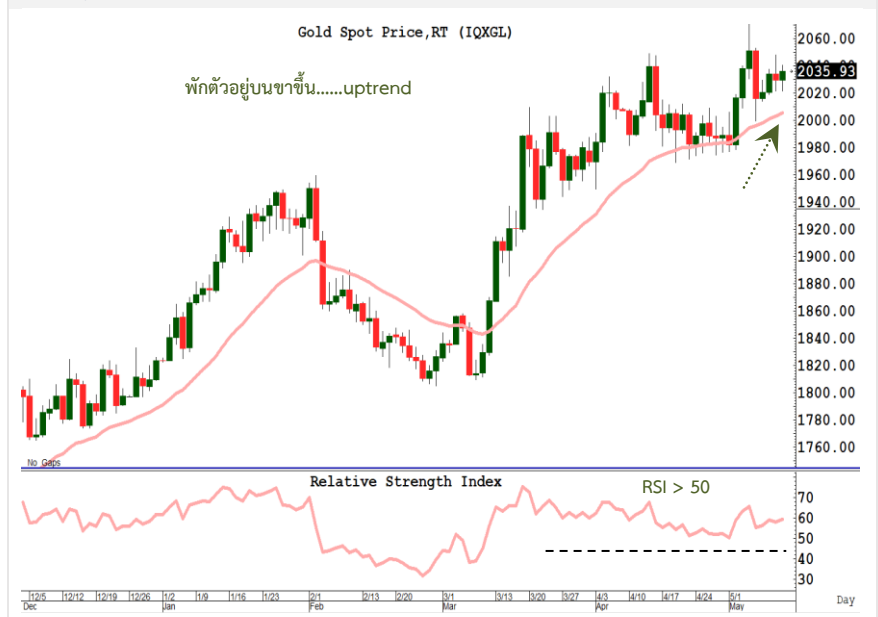
Thanarut@bualuang.co.th

Tel. (662) 618-1334

SET50 Index Future



Gold Spot



หลักทรัพย์	เปิด	สูงสุด	ต่ำสุด	ปิด	เฉลี่ย	ราคาที่ใช้ชำระ ราคา	เปลี่ยนแปลง	ปริมาณ (สัญญา)	สถานะคงค้าง (สัญญา)
SET50	953.01	956.76	948.3	950.57	952.16	N/A	-1.12	N/A	N/A
S50K23	950.00	951.90	949	951.90	950.60	951.00	2	12	223
S50M23	950	955.20	945.7	948.60	950.00	948.60	0.7	188,608	498,728
S50N23	950.9	950.90	950.9	950.90	950.90	950.90	3.1	1	42
S50U23	946.7	950.00	944.1	945.90	947.00	945.90	0.8	14,649	60,490
S50Z23	947.1	950.00	944.9	946.50	947.40	946.20	0.8	2,897	26,416
S50H24	943.5	945.80	936	942.70	943.50	943.20	1.2	1,138	5,022
Total								207,305	590,921

Source : SET Smart

Trading by Investor Type - SET50 Index Futures

5 วันย้อนหลัง

วันที่	นักลงทุนต่างประเทศ ปริมาณ			นักลงทุนสถาบัน ปริมาณ			นักลงทุนภายในประเทศ ปริมาณ			รวม	
	ซื้อ	ขาย	สุทธิ	ซื้อ	ขาย	สุทธิ	ซื้อ	ขาย	สุทธิ	ปริมาณ	สถานะคงค้าง
11/05/2023	67,476	57,449	10,027	39,118	35,777	3,341	100,711	114,079	-13,368	207,305	590,921
10/05/2023	53,129	51,903	1,226	31,262	29,320	1,942	73,655	76,823	-3,168	158,046	581,151
09/05/2023	77,177	85,436	-8,259	39,322	30,889	8,433	100,605	100,779	-174	217,104	600,520
08/05/2023	113,235	92,723	20,512	33,694	38,999	-5,305	109,563	124,770	-15,207	256,492	607,918
03/05/2023	119,693	137,806	-18,113	70,474	63,045	7,429	160,883	150,199	10,684	351,050	516,667

4 เดือนย้อนหลัง

วันที่	นักลงทุนต่างประเทศ ปริมาณ			นักลงทุนสถาบัน ปริมาณ			นักลงทุนภายในประเทศ ปริมาณ			รวม	
	ซื้อ	ขาย	สุทธิ	ซื้อ	ขาย	สุทธิ	ซื้อ	ขาย	สุทธิ	ปริมาณ	สถานะคงค้าง
พ.ค. 2023	532,647	517,455	15,192	252,606	238,122	14,484	635,986	665,662	-29,676	1,421,239	590,921
เม.ย. 2023	1,347,692	1,425,906	-78,214	617,464	617,425	39	1,616,874	1,538,699	78,175	3,582,030	500,644
มี.ค. 2023	3,051,754	2,935,366	116,388	1,110,804	1,094,251	16,553	2,675,691	2,808,632	-132,941	6,838,249	435,301
ก.พ. 2023	1,468,424	1,592,263	-123,839	668,550	650,734	17,816	2,019,686	1,913,663	106,023	4,156,660	664,829

4 ไตรมาสย้อนหลัง

วันที่	นักลงทุนต่างประเทศ ปริมาณ			นักลงทุนสถาบัน ปริมาณ			นักลงทุนภายในประเทศ ปริมาณ			รวม	
	ซื้อ	ขาย	สุทธิ	ซื้อ	ขาย	สุทธิ	ซื้อ	ขาย	สุทธิ	ปริมาณ	สถานะคงค้าง
Q2/2023	1,880,339	1,943,361	-63,022	870,070	855,547	14,523	2,252,860	2,204,361	48,499	5,003,269	590,921
Q1/2023	5,866,721	5,973,951	-107,230	2,457,702	2,420,101	37,601	6,689,756	6,620,127	69,629	15,014,179	435,301
Q4/2022	5,773,579	5,666,820	106,759	2,433,982	2,462,801	-28,819	5,991,792	6,069,732	-77,940	14,199,353	563,223
Q3/2022	6,188,060	6,186,241	1,819	2,707,073	2,714,363	-7,290	6,950,031	6,944,560	5,471	15,845,164	495,136

Source : SET Smart

Metal Futures

หลักทรัพย์	เปิด	สูงสุด	ต่ำสุด	ปิด	เฉลี่ย	ราคาที่ใช้ชำระ ราคา	เปลี่ยนแปลง	ปริมาณ (สัญญา)	สถานะคงค้าง (สัญญา)
GF10M23	32,540	32,670	32,360	32,530	32,529	32,530.00	-20	2680	6,502
GFM23	32,610	32,650	32,400	32,530	32,521	32,530.00	-120	29	281
GOM23	2,047	2,065	2,038	2,043	2,050	2,043.10	-3.9	40912	44,478
SVFM23	26	26	25	25	26	25.21	-0.57	306	975
GF10Q23	32,620	32,770	32,490	32,600	32,592	32,600.00	-30	1698	3,640
GFQ23	32,590.00	32,590.00	32,560.00	32,560.00	32,564.00	32,560.00	-30	8	133
GOU23	2,077	2,094	2,068	2,073	2,079	2,073.50	-3.2	10772	12,226
SVFU23	26	26	25	26	26	25.51	-0.67	94	247
GF10V23	32,720	32,870	32,610	32,700	32,705	32,700.00	-20	205	450
GFV23	32,690.00	32,720.00	32,620.00	32,620.00	32,677.00	32,740.00	-120	7	18

Source : SET Smart

Single Stock Futures

blssk	เปิด	สูงสุด	ต่ำสุด	ปิด	เฉลี่ย	ราคาที่ใช้ชำระ ราคา	เปลี่ยนแปลง	ปริมาณ (สัญญา)	สถานะคงค้าง (สัญญา)
AAVM23	2.77	2.78	2.73	2.74	2.75	2.74	-0.04	95	62,174
ADVANCM23	220.49	220.53	220	220.50	220.45	220.40	-0.09	289	3,166
AEONTSM23	199.91	201.16	199.82	201.16	200.46	201.16	-0.84	22	195
AMATAM23	23.09	23.09	22.56	22.56	22.69	22.56	-0.44	222	1,101
AOTM23	73.5	74.00	73.5	74.00	73.68	73.55	-0.45	1,086	2,876
APM23	11.85	11.85	11.75	11.75	11.81	11.75	-0.29	516	2,035
AWCM23	5.48	5.48	5.48	5.48	5.48	5.48	-	501	8,210
BAM23	14.17	14.17	14.17	14.17	14.17	14.17	-0.07	5	1,114
BAMM23	12.28	12.29	12.15	12.17	12.25	12.17	-0.18	1,516	15,278
BANPUM23	8.56	8.61	8.35	8.41	8.46	8.41	-0.23	3,345	48,863
BAYM23	-	-	-	-	-	28.71	-	100	613
BBLM23	163.1	163.10	162	162.01	162.28	162.01	-0.14	58	1,830
BCHM23	19.95	19.95	18.75	18.98	19.15	18.96	-1.75	620	9,730
BCPGM23	9.45	9.62	9.44	9.62	9.59	9.62	-0.15	130	6,681
BCPM23	-	-	-	-	-	30.78	-0.47	100	4,831
BDM23	30	30.00	29.75	29.79	29.93	29.79	0.04	412	1,800
BEAUTYM23	1.21	1.23	1.2	1.21	1.21	1.21	-	285	42,842
BECM23	7.78	7.99	7.78	7.99	7.86	7.96	0.09	10	2,056
BEMM23	9.04	9.24	9.04	9.24	9.14	9.17	0.16	2,225	11,193
BGRIMM23	40	40.00	39.5	39.50	39.86	39.50	-0.1	32	3,197
BHM23	249.44	249.44	241	241.00	243.24	241.00	-2.55	323	1,327
BJCM23	39.51	40.59	39.51	40.59	40.30	40.50	0.99	115	1,092
BLAM23	25.75	26.11	25.75	25.99	25.90	25.99	-0.71	125	8,558
BLANDM23	0.96	0.96	0.96	0.96	0.96	0.96	-	1	78,596
BPPM23	-	-	-	-	-	14.24	0.1	-	1,493
BTSM23	7.88	7.89	7.79	7.79	7.82	7.79	0.03	21	10,237
CBGM23	76	78.79	76	77.60	78.04	77.60	2.1	1,450	4,932
CENTELM23	55.97	55.97	55	55.47	55.31	55.47	-0.04	14	1,051
CHGM23	3.46	3.46	3.33	3.36	3.40	3.36	-0.17	4,514	7,759
CKM23	22.3	22.30	22	22.10	22.27	22.10	-0.03	160	1,010
CKPM23	3.83	3.83	3.78	3.79	3.82	3.79	-0.04	542	28,977
COM7M23	28.35	28.35	27.51	27.99	27.90	27.99	-0.11	788	4,711
CPALLM23	66.1	67.60	66.1	67.25	66.82	67.25	1.5	1,304	3,398
CPFM23	20.49	20.61	20.48	20.60	20.57	20.60	0.26	631	23,123
CPNM23	69.83	69.83	69.82	69.82	69.82	69.82	0.02	103	742
CRCM23	46	46.35	45.75	46.35	46.05	46.35	0.8	709	2,136
DELTAM23X	78.9	79.45	77.25	77.70	78.28	77.65	-0.2	61	1,287
DTACM23X	8.4	8.40	7.1	7.89	7.82	7.72	-0.45	4	180
EAM23	68.2	69.16	68.2	68.55	68.64	68.55	0.14	427	23,020
EASTWM23	-	-	-	-	-	5.13	0.05	-	10
EGCOM23	-	-	-	-	-	152.53	-3.33	-	548
EPGM23	7.53	7.62	7.53	7.62	7.58	7.62	0.04	4	3,504
ERWM23	4.78	4.78	4.78	4.78	4.78	4.75	-0.12	4	2,706
ESSOM23	8.6	8.64	8.55	8.64	8.59	8.64	-	30	12,243
GFPTM23	11.3	11.30	11.3	11.30	11.30	11.30	0.4	140	3,295
GLOBALM23X	18.24	18.70	18.24	18.50	18.43	18.50	0.69	1,417	1,833
GPSCM23	64.5	64.50	63.5	63.55	64.08	63.55	-0.7	96	5,197
GULFM23	52.8	52.87	52.45	52.62	52.77	52.62	-0.13	119	12,651
GUNKULM23	3.84	3.90	3.84	3.88	3.88	3.88	0.09	2,085	129,927
HANAM23	41	41.50	40.01	40.01	40.96	40.01	-0.99	284	1,263
HMPROM23	14.6	14.60	14.6	14.60	14.60	14.60	0.01	210	3,322
ICHIM23	12.6	12.81	12.6	12.80	12.73	12.80	0.8	1,958	6,042
INTUCHM23X	76.81	76.81	76.81	76.81	76.81	76.81	-0.74	46	141
IRPCM23	2.46	2.46	2.4	2.42	2.43	2.42	-0.08	2,091	26,375
ITDM23	1.53	1.55	1.51	1.51	1.52	1.52	-	195	17,954
IVLM23	35.2	35.20	34	34.30	34.38	34.10	-0.9	965	10,566
JASM23	1.81	1.85	1.79	1.85	1.80	1.81	-0.07	560	69,843

blssk	เปิด	สูงสุด	ต่ำสุด	ปิด	เฉลี่ย	ราคาที่ใช้ชำระ ราคา	เปลี่ยนแปลง	ปริมาณ (สัญญา)	สถานะคงค้าง (สัญญา)
JMTM23	41.95	42.19	41.47	41.47	41.84	41.47	-0.28	106	5,480
KBANKM23	133.1	135.40	133	134.60	134.33	134.60	0.6	977	6,492
KCEM23	38	38.15	36.71	37.30	37.63	37.26	-0.73	692	5,450
KEXM23	11.76	11.97	11.6	11.62	11.77	11.62	-0.18	108	3,460
KKPM23	63	63.00	63	63.00	63.00	63.00	-	41	2,112
KTBM23	18.67	18.79	18.6	18.75	18.69	18.75	0.15	5,213	11,791
KTCM23	56.33	56.33	55.32	55.32	55.77	55.32	-0.68	72	709
LHM23	-	-	-	-	-	9.19	-0.1	1,000	4,066
LPNM23	4.7	4.70	4.68	4.68	4.70	4.68	-0.04	4	3,111
MAJORM23	-	-	-	-	-	15.91	-0.42	-	4,202
MBKM23	16	16.00	16	16.00	16.00	16.00	0.17	202	856
MEGAM23	41.44	41.44	41.44	41.44	41.44	41.44	-0.41	1	629
MINTM23	33.19	33.19	32.3	32.57	32.41	32.57	-0.49	112	1,700
MM23	-	-	-	-	-	49.19	-0.01	-	991
MTCM23	39.5	39.50	38.55	39.00	39.23	39.00	-0.73	1,071	4,122
ORIM23	-	-	-	-	-	11.04	-0.36	-	4,093
ORM23	23	23.25	22.77	22.77	23.04	22.77	-0.18	1,224	3,888
OSPM23	30.75	31.50	30.75	31.50	31.17	31.50	1.85	900	2,421
PLANBM23	-	-	-	-	-	8.71	0.01	-	14,031
PRMM23	6.24	6.24	6.24	6.24	6.24	6.24	-0.26	7	3,319
PSHM23	-	-	-	-	-	12.70	0.1	-	353
PSLM23	12.25	12.42	12.05	12.05	12.18	12.08	0.06	240	3,491
PTGM23	14.1	14.10	14	14.01	14.02	14.01	0.23	158	14,833
PTTEPM23	148.5	149.00	147.01	148.85	148.48	148.85	0.35	328	4,557
PTTGCM23	42.07	42.07	41.15	41.30	41.62	41.30	-1.27	429	3,948
PTTM23	32.18	32.51	32.18	32.39	32.30	32.40	0.3	1,577	6,807
QHM23	-	-	-	-	-	2.35	-0.02	-	2,116
RATCHM23	38.78	38.78	38.78	38.78	38.78	38.78	0.15	2	1,323
RSM23X	-	-	-	-	-	14.54	-0.1	-	24,179
SAMARTM23	4.2	4.24	4.2	4.24	4.22	4.24	0.01	20	5,835
SAWADM23	61	61.00	59.01	59.26	59.63	59.26	-1.43	287	5,892
SCBM23	107	107.00	106.5	106.50	106.71	106.50	-0.47	287	5,070
SCCM23	333	334.00	332.01	334.00	332.60	334.00	0.5	46	1,664
SCGPM23	44.36	44.36	44.36	44.36	44.36	44.36	-0.64	101	4,070
SGPM23	-	-	-	-	-	8.82	-0.15	-	202
SIRIM23	1.97	1.97	1.93	1.96	1.95	1.96	-	12,362	38,569
SM23	-	-	-	-	-	1.63	-0.04	500	21,614
SPALIM23	21.06	21.27	21.06	21.27	21.11	21.27	-0.1	104	2,737
SPCGM23	-	-	-	-	-	13.02	0.21	-	2
SPRCM23	9.15	9.15	9.15	9.15	9.15	9.15	-0.22	4	509
STAM23	20.06	20.06	18.9	18.99	19.23	18.99	-1.22	531	2,031
STECM23	12.25	12.37	12.15	12.27	12.20	12.20	-0.08	83	7,830
STGTM23	9.36	9.36	9.36	9.36	9.36	9.36	-0.19	111	3,683
STPIM23	4.07	4.07	4.07	4.07	4.07	4.07	0.02	62	19,840
SUPERM23	0.62	0.62	0.61	0.62	0.61	0.62	-	19	43,450
TASCOM23	20.1	20.69	20.1	20.65	20.49	20.65	0.57	508	2,584
TCAPM23	-	-	-	-	-	45.70	0.25	-	128
THAIM23	-	-	-	-	-	3.36	-	-	-
THANIM23	-	-	-	-	-	3.65	-0.06	1,500	3,522
THCOMM23	12.9	12.90	12.8	12.85	12.86	12.85	-0.25	34	1,732
THGM23	-	-	-	-	-	68.31	-	-	28
TISCOM23	92.99	92.99	92.99	92.99	92.99	92.99	-0.01	1	239
TKNM23	9.68	9.68	9.68	9.68	9.68	9.68	0.13	20	13,520
TOAM23	-	-	-	-	-	29.76	0.18	-	206
TOPM23	47.75	48.20	47.47	47.47	47.91	47.47	-0.04	357	1,333
TPIPLM23	-	-	-	-	-	1.56	0.01	-	2,244
TPIPPM23	-	-	-	-	-	3.30	-0.04	-	4,172
TQMM23	28.68	28.68	28.68	28.68	28.68	28.68	-	1,021	3,992

blssk	เปิด	สูงสุด	ต่ำสุด	ปิด	เฉลี่ย	ราคาที่ใช้ชำระ ราคา	เปลี่ยนแปลง	ปริมาณ (สัญญา)	สถานะคงค้าง (สัญญา)
TRUEEM23X	-	-	-	-	-	7.72	-0.45	-	207
TRUEM23	8.05	8.05	7.66	7.70	7.81	7.70	-0.46	7,563	22,085
TTAM23	-	-	-	-	-	6.99	-0.05	-	1,865
TTBM23	1.52	1.52	1.49	1.52	1.51	1.52	0.01	2,214	35,317
TTCLM23	4.13	4.34	4.06	4.34	4.10	4.27	0.12	83	2,837
TTWM23	-	-	-	-	-	8.59	-0.1	-	401
TUM23	15	15.00	14.8	14.94	14.85	14.94	-0.06	83	15,673
TVOM23X	-	-	-	-	-	26.43	-	-	300
UNIQM23	-	-	-	-	-	3.67	-	-	6,606
VGIM23	3.15	3.18	3.14	3.18	3.15	3.18	0.01	1,031	9,114
VNGM23	4.4	4.42	4.4	4.42	4.41	4.42	-0.1	3	8,564
WHAM23	4.48	4.54	4.44	4.48	4.50	4.48	0.1	2,246	9,436
Total								80,210	1,201,831

Source : SET Smart

BUALUANG SECURITIES PUBLIC COMPANY LIMITED (BLS) is a subsidiary of BANGKOK BANK PUBLIC COMPANY LIMITED (BBL). This document is produced based upon sources believed to be reliable but their accuracy, completeness or correctness is not guaranteed. The statements or expressions of opinion herein were arrived at after due and careful consideration to use as information for investment. Expressions of opinion contained herein are subject to change without notice. This document is not, and should not be construed as, an offer or the solicitation of an offer to buy or sell any securities. The use of any information shall be at the sole discretion and risk of the user.

BUALUANG SECURITIES PUBLIC COMPANY LIMITED MAY BE IN RELATIONSHIP WITH THE SECURITIES IN THIS REPORT. "Opinions, projections and other information contained in this report are based upon sources believed to be accurate including the draft prospectus, but no responsibility is accepted for any loss occasioned by reliance placed upon the contents hereof. Bualuang Securities Public Company Limited may from time to time perform investment, advisory or other services for companies mentioned in this report, as well as dealing (as principal or otherwise) in, or otherwise being interested in, any securities mentioned herein, This report does not constitute a solicitation to buy or sell any securities". Investors should carefully read details in the prospectus before making investment decision.






BUALUANG SECURITIES PUBLIC COMPANY LIMITED MAY ACT AS MARKET MAKER AND ISSUER OF DWs, AND ISSUER OF STRUCTURED NOTES ON THESE SECURITIES. The company may prepare the research reports on those underlying securities. Investors should carefully read the details of the derivative warrants and structured notes in the prospectus before making investment decisions.

ADVANC	AMATA	AOT	BDMS	BH	CBG	CENTEL	CPALL	GLOBAL	GPSC	IRPC	KBANK	KCE	KTC	MINT
PTG	PTT	PTTEP	PTTGC	SCB	SPRC	TOP	WHA	ESSO	STA	BGRIM	GULF	MTC	AWC	CRC
CPF	CPN	HANA	HMPRO	IVL	OSP	SAWAD	BANPU	BCH	BTS	SCC	TISCO	TU	INTUCH	RATCH
VGI	SCGP	COM7	DOHOME	JMT	CHG	TTB	BAM	BCP	AP	KTB	KKP	OR	BEM	GUNKUL
EA	SPALI	RBF	STGT	JMART	BEC	BLA	KEX	RCL	SINGER	STARK	TIDLOR	FORTH	TIPH	AAV
DELTA	BCPG	SABUY	THG	CKP	TRUE	PSL	SIRI							

BUALUANG SECURITIES PUBLIC COMPANY LIMITED IS OR MAY BE AN UNDERWRITER/CO-UNDERWRITER/JOINT LEAD IN RESPECT OF THE INITIAL PUBLIC OFFERING (IPO) OF SECURITIES.

Financial Advisor	Lead underwriter/ Underwriter/ Co-underwriter
	MGC

CG Rating

Score Range	Score Range	Description
90 – 100		Excellent
80 – 89		Very Good
70 – 79		Good
60 – 69		Satisfactory
50 – 00359		Pass
Less than 50	No logo given	-

Thailand's Private Sector Collective Action Coalition Against Corruption programme (Thai CAC) under Thai Institute of Directors

- companies that have **declared** their intention to join CAC, and
- companies **certified** by CAC.

CORPORATE GOVERNANCE REPORT DISCLAIMER

This research report was prepared by Bualuang Securities Public Company Limited and refers to research prepared by Morgan Stanley. Morgan Stanley does not warrant or guarantee the accuracy or completeness of its research reports. Morgan Stanley reserves copyright and other proprietary rights in the material reproduced in this report. Morgan Stanley is under no obligation to inform Bualuang Securities or you if the views or information referred to or reproduced in this research report change.

Corporate Governance Report disclaimer

The disclosure of the survey result of the Thai Institute of Directors Association (IOD) regarding corporate governance is made pursuant to the policy of the Office of the Securities and Exchange Commission. The IOD survey is based on the information of a company listed on the Stock Exchange of Thailand and the Market for Alternative Investment disclosed to the public and able to be accessed by a general public investor. The result, therefore, is from the perspective of a third party. It is not an evaluation of operation and is not based on inside information.

The survey result is as of the date appearing in the Corporate Governance Report of Thai Listed Companies. As a result, the survey result may be changed after that date. Bualuang Securities Public Company Limited neither confirms nor certifies the accuracy of such survey results.

“Disclaimer: The disclosure of the Anti-Corruption Progress Indicators of a listed company on the Stock Exchange of Thailand, which is assessed by the relevant institution as disclosed by the Office of the Securities and Exchange Commission, is made in order to comply with the policy and sustainable development plan for the listed companies. The relevant institution made this assessment based on the information received from the listed company, as stipulated in the form for the assessment of Anti-corruption which refers to the Annual Registration Statement (Form 56-1), Annual Report (Form 56-2), or other relevant documents or reports of such listed company. The assessment result is therefore made from the perspective of a third party. It is not an assessment of operation and is not based on any inside information. Since this assessment is only the assessment result as of the date appearing in the assessment result, it may be changed after that date or when there is any change to the relevant information. Nevertheless, Bualuang Securities Public Company Limited neither confirms, verifies, nor certifies the accuracy and completeness of the assessment result.”

BUALUANG RESEARCH – RECOMMENDATION FRAMEWORK

STOCK RECOMMENDATIONS

BUY: Expected positive total returns of 15% or more over the next 12 months.

HOLD: Expected total returns of between -15% and +15% over the next 12 months.

SELL: Expected negative total returns of 15% or more over the next 12 months.

TRADING BUY: Expected positive total returns of 15% or more over the next 3 months.

SECTOR RECOMMENDATIONS

OVERWEIGHT: The industry, as defined by the analyst's coverage universe, is expected to outperform the relevant primary market index over the next 12 months.

NEUTRAL: The industry, as defined by the analyst's coverage universe, is expected to perform in line with the relevant primary market index over the next 12 months.

UNDERWEIGHT: The industry, as defined by the analyst's coverage universe, is expected to underperform the relevant primary market index over the next 12 months.

IMPORTANT DISCLOSURES FOR U.S. PERSONS

This research report was prepared by Bualuang Securities Public Company Limited (“BLS”). BLS is not a registered broker-dealer in the United States and, therefore, is not subject to U.S. rules regarding the preparation of research reports and the independence of research analysts. This research report is provided for distribution to “major U.S. institutional investors” in reliance on the exemption from registration provided by Rule 15a-6 of the U.S. Securities Exchange Act of 1934, as amended (the “Exchange Act”).

Under no circumstances should any recipient of this research report effect any transaction to buy or sell securities or related financial instruments through BLS. Rosenblatt Securities Inc. accepts responsibility for the contents of this research report, subject to the terms set out below, to the extent that it is delivered to a U.S. person other than a major U.S. institutional investor.

The analyst whose name appears in this research report is not registered or qualified as a research analyst with the Financial Industry Regulatory Authority (“FINRA”) and may not be an associated person of Rosenblatt Securities Inc. and, therefore, may not be subject to applicable restrictions under FINRA Rules on communications with a subject company, public appearances and trading securities held by a research analyst account.

Additional Disclosures

This research report is for distribution only under such circumstances as may be permitted by applicable law. This research report has no regard to the specific investment objectives, financial situation or particular needs of any specific recipient, even if sent only to a single recipient. This research report is not guaranteed to be a complete statement or summary of any securities, markets, reports or developments referred to in this research report. Neither BLS nor any of its directors, officers, employees or agents shall have any liability, however arising, for any error, inaccuracy or incompleteness of fact or opinion in this research report or lack of care in this research report’s preparation or publication, or any losses or damages which may arise from the use of this research report.

BLS may rely on information barriers, such as “Chinese Walls” to control the flow of information within the areas, units, divisions, groups, or affiliates of BLS.

Investing in any non-U.S. securities or related financial instruments (including ADRs) discussed in this research report may present certain risks. The securities of non-U.S. issuers may not be registered with, or be subject to the regulations of, the U.S. Securities and Exchange Commission. Information on such non-U.S. securities or related financial instruments may be limited. Foreign companies may not be subject to audit and reporting standards and regulatory requirements comparable to those in effect within the United States.

The value of any investment or income from any securities or related financial instruments discussed in this research report denominated in a currency other than U.S. dollars is subject to exchange rate fluctuations that may have a positive or adverse effect on the value of or income from such securities or related financial instruments.

Past performance is not necessarily a guide to future performance and no representation or warranty, express or implied, is made by BLS with respect to future performance. Income from investments may fluctuate. The price or value of the investments to which this research report relates, either directly or indirectly, may fall or rise against the interest of investors. Any recommendation or opinion contained in this research report may become outdated as a consequence of changes in the environment in which the issuer of the securities under analysis operates, in addition to changes in the estimates and forecasts, assumptions and valuation methodology used herein.

No part of the content of this research report may be copied, forwarded or duplicated in any form or by any means without the prior consent of BLS and BLS accepts no liability whatsoever for the actions of third parties in this respect.