

TFEX Daily

14 กรกฎาคม 2566

SET50

เปลี่ยนแผน....ทยอยปิดสถานะ "ขาย"

Gold spot

Breaking high....ขาขึ้น ไปได้!

SET50: รับ 915 ต้าน 930

GFQ23: รับ 32,00 ต้าน 33,000

มุมมองทางเทคนิค โดย คุณชนรัตน์ อีตรกุล

นักวิเคราะห์การลงทุนปัจจัยพื้นฐานด้านหลักทรัพย์และปัจจัยทางเทคนิค

Thanarut@bualuang.co.th

Tel. (662) 618-1334

"ระวังสัญญาณรีบาวด์"

SET50

ขาลงแนวระวางสัญญาณรีบาวด์"

มุมมอง: คำนีโครงสร้างหลักเทรดขาลง Sideway down แต่มีความเสี่ยงการรีบาวด์ จับมหาก RSI ทะลุ 50 บ่งชี้ภาวะความแข็งแกร่ง อาจส่งผลให้ดัชนีคิดขึ้นไปสู่โซนต้านได้ไม่ยาก!

แผนเทรด....สถานะขายและทยอยปิดสถานะ ลดความเสี่ยง ในทางตรงข้ามสถานะซื้อและรอสัญญาณขึ้นขึ้นการกลับตัว รออีกหน่อย.....

Note: เงื่อนไขคิดทางกรณีขาดทุนมากกว่า 10% ของพอร์ตและปิดสถานะ

SET50 Index Future



"Uptrend is coming"

Gold spot

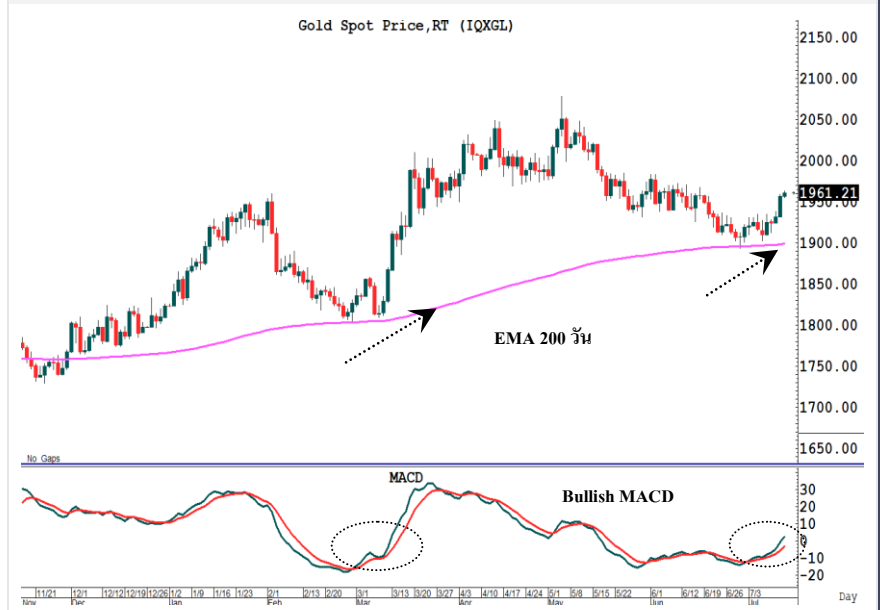
จับสัญญาณเทรค....ทองคำ

มุมมอง: ราคาทองคำ Breaking high ได้สำเร็จ ทำจุดสูงสุดในรอบ 2 สัปดาห์..... ตามคาด ขณะที่เส้น EMA 200 วัน บ่งชี้จุดรับได้อย่างแม่นยำจับตามา MACD > 0 ช่วยยืนยันสัญญาณกลับตัว คล้ายโครงสร้างในอดีต (เดือนมี.ค.)

แผนเทรด....สถานะ Long ถูกทางและถือคือ ดันโซนต้าน \$1,980-\$2000/ออนซ์ ในทางตรงกันข้ามสถานะ Short และปิดไปแล้ว และรอไม่รับ

Note: กรณีผลตอบแทนติดลบมากกว่า 10% ของพอร์ต และปิดสถานะ หรือปรับตัวหลุด low ต่ำกว่า \$1940/ออนซ์ (trailing stop)

Gold Spot



วิกิจ ธีรธรรมรัตน์

นักวิเคราะห์การลงทุนปัจจัยพื้นฐานด้านตลาดทุน/ปัจจัยทางเทคนิค

Wikij.tir@bualuang.co.th Tel. (662) 618-1334

หลักทรัพย์	เปิด	สูงสุด	ต่ำสุด	ปิด	เฉลี่ย	ราคาที่ใช้ชำระ ราคา	เปลี่ยนแปลง	ปริมาณ (สัญญา)	สถานะคงค้าง (สัญญา)
SET50	920.74	924.74	918.19	921.83	921.38	N/A	1.18	N/A	N/A
S50N23	914.60	921.90	914.6	917.60	918.50	917.80	1.2	4	141
S50Q23	920.5	920.50	920.5	920.50	920.50	920.50	3.5	1	50
S50U23	916.3	918.50	912.5	917.00	916.00	916.80	3.4	171,942	554,502
S50Z23	918	920.10	914.5	918.90	917.90	918.60	3.4	10,141	71,631
S50H24	916	916.00	911	916.00	914.30	915.60	3.9	1,730	15,438
S50M24	912	913.00	908.6	912.00	911.10	911.80	2.7	702	3,802
Total								184,520	645,564

Source : SET Smart

Trading by Investor Type - SET50 Index Futures

5 วันย้อนหลัง

วันที่	นักลงทุนต่างประเทศ ปริมาณ			นักลงทุนสถาบัน ปริมาณ			นักลงทุนภายในประเทศ ปริมาณ			รวม	
	ซื้อ	ขาย	สุทธิ	ซื้อ	ขาย	สุทธิ	ซื้อ	ขาย	สุทธิ	ปริมาณ	สถานะคงค้าง
13/07/2023	75,344	67,892	7,452	22,311	24,936	-2,625	86,865	91,692	-4,827	184,520	645,564
12/07/2023	91,821	83,192	8,629	34,302	34,314	-12	135,911	144,528	-8,617	262,034	664,447
11/07/2023	82,247	73,901	8,346	23,187	22,203	984	87,239	96,569	-9,330	192,673	641,441
10/07/2023	101,801	96,321	5,480	40,835	38,141	2,694	130,823	138,997	-8,174	273,459	669,798
07/07/2023	111,670	100,431	11,239	36,989	38,760	-1,771	119,507	128,975	-9,468	268,166	670,067

4 เดือนย้อนหลัง

วันที่	นักลงทุนต่างประเทศ ปริมาณ			นักลงทุนสถาบัน ปริมาณ			นักลงทุนภายในประเทศ ปริมาณ			รวม	
	ซื้อ	ขาย	สุทธิ	ซื้อ	ขาย	สุทธิ	ซื้อ	ขาย	สุทธิ	ปริมาณ	สถานะคงค้าง
ก.ค. 2023	822,282	789,532	32,750	303,523	291,895	11,628	998,044	1,042,422	-44,378	2,123,849	645,564
มิ.ย. 2023	2,918,155	2,910,668	7,487	924,165	930,084	-5,919	2,574,302	2,575,870	-1,568	6,416,622	678,895
พ.ค. 2023	1,783,391	1,798,312	-14,921	810,468	798,909	11,559	2,652,501	2,649,139	3,362	5,246,360	671,089
เม.ย. 2023	1,347,692	1,425,906	-78,214	617,464	617,425	39	1,616,874	1,538,699	78,175	3,582,030	500,644

4 ไตรมาสย้อนหลัง

วันที่	นักลงทุนต่างประเทศ ปริมาณ			นักลงทุนสถาบัน ปริมาณ			นักลงทุนภายในประเทศ ปริมาณ			รวม	
	ซื้อ	ขาย	สุทธิ	ซื้อ	ขาย	สุทธิ	ซื้อ	ขาย	สุทธิ	ปริมาณ	สถานะคงค้าง
Q3/2023	822,282	789,532	32,750	303,523	291,895	11,628	998,044	1,042,422	-44,378	2,123,849	645,564
Q2/2023	6,049,238	6,134,886	-85,648	2,352,097	2,346,418	5,679	6,843,677	6,763,708	79,969	15,245,012	678,895
Q1/2023	5,866,721	5,973,951	-107,230	2,457,702	2,420,101	37,601	6,689,756	6,620,127	69,629	15,014,179	435,301
Q4/2022	5,773,579	5,666,820	106,759	2,433,982	2,462,801	-28,819	5,991,792	6,069,732	-77,940	14,199,353	563,223

Metal Futures

หลักทรัพย์	เปิด	สูงสุด	ต่ำสุด	ปิด	เฉลี่ย	ราคาที่ใช้ชำระ ราคา	เปลี่ยนแปลง	ปริมาณ (สัญญา)	สถานะคงค้าง (สัญญา)
GF10Q23	32,200	32,350	32,140	32,280	32,271	32,270.00	80	3940	7,979
GFQ23	32,150	32,350	32,140	32,350	32,274	32,250.00	80	19	201
GOU23	1,962	1,987	1,960	1,985	1,977	1,984.80	23	46084	46,839
SVFU23	24	25	24	25	24	24.64	1.04	184	1,190
GF10V23	32,310	32,450	32,290	32,370	32,402	32,370.00	60	2693	5,291
GFV23	32,410.00	32,440.00	32,400.00	32,400.00	32,406.00	32,400.00	30	52	195
GF10Z23	32,400	32,550	32,380	32,470	32,490	32,470.00	50	635	927
GFZ23	32,500	32,550	32,500	32,550	32,506	32,470.00	80	9	15
GOZ23	1,992	2,017	1,990	2,015	2,008	2,015.20	23.2	9998	11,889
SVFZ23	24.05	24.98	24.05	24.98	24.46	24.98	1.06	28	187

Source : SET Smart

Single Stock Futures

blssk	เปิด	สูงสุด	ต่ำสุด	ปิด	เฉลี่ย	ราคาที่ใช้ชำระ ราคา	เปลี่ยนแปลง	ปริมาณ (สัญญา)	สถานะคงค้าง (สัญญา)
AAVU23	2.56	2.57	2.51	2.57	2.52	2.56	-0.03	4,096	52,596
ADVANCU23	213.53	215.30	213.53	215.30	214.54	215.30	1.3	263	1,704
AEONTSU23	165.62	168.00	162.12	168.00	164.87	167.49	-0.51	5	145
AMATAU23	21.71	21.99	21.7	21.99	21.82	21.99	-0.11	14	1,044
AOTU23	70.1	70.21	69.21	69.60	69.61	69.60	-1.35	2,033	4,142
APU23	11.1	11.13	11.1	11.13	11.12	11.13	0.16	2	663
AWCU23	4.47	4.53	4.44	4.47	4.49	4.47	-	1,556	5,356
BAMU23	10.26	10.37	10.26	10.27	10.31	10.27	0.02	128	11,068
BANPUU23	8.47	8.55	8.42	8.50	8.48	8.50	-0.04	543	58,345
BAU23	14.19	14.19	14.19	14.19	14.19	14.10	0.09	1	1,197
BAYU23	30.3	30.36	30.3	30.36	30.33	30.36	0.11	2	623
BBLU23	155.29	156.00	155.15	155.60	155.48	155.60	-0.4	113	6,726
BCHU23	17.39	17.40	17.39	17.40	17.40	17.40	0.41	103	3,794
BCPGU23	-	-	-	-	-	8.91	0.1	-	37,307
BCPU23	36.98	37.78	36.98	37.78	37.51	37.60	0.14	606	1,824
BDMSU23	27.43	27.50	27.15	27.25	27.22	27.25	-0.25	151	1,380
BEAUTYU23	0.52	0.52	0.52	0.52	0.52	0.52	-	8	7,340
BECU23	7.96	7.96	7.85	7.92	7.91	7.92	-0.05	19,803	19,894
BEMU23	8.4	8.40	8.4	8.40	8.40	8.40	0.05	501	7,207
BGRIMU23	35.02	35.48	34.95	35.48	35.01	35.48	0.23	37	2,493
BHU23	214.98	215.20	214	214.75	214.74	214.75	-3.25	70	689
BJCU23	-	-	-	-	-	33.73	-0.12	-	950
BLANDU23	0.83	0.83	0.82	0.83	0.83	0.83	-0.01	75	164,356
BLAU23	23.25	23.43	23.14	23.43	23.27	23.51	-0.04	106	4,314
BPPU23	14.15	14.15	14.15	14.15	14.15	14.41	0.1	2	1,909
BTSU23	7.38	7.45	7.38	7.45	7.39	7.45	0.05	6	8,583
CBGU23	64.72	67.85	64.65	67.60	66.92	67.60	2.85	883	4,738
CENTELU23	44.75	44.80	43.33	44.25	44.06	44.25	-1.31	139	822
CHGU23	2.93	2.93	2.8	2.89	2.82	2.89	-0.03	574	8,346
CKPU23	3.45	3.45	3.45	3.45	3.45	3.45	0.06	1	6,756
CKU23	19.86	19.95	19.8	19.95	19.84	19.95	-	106	1,156
COM7U23	26.25	26.90	26.19	26.73	26.53	26.73	0.55	524	6,510
CPALLU23	62.5	62.50	61.5	62.00	61.69	62.00	-0.7	492	11,330
CPFU23	19.46	19.50	19.31	19.50	19.45	19.50	-0.02	297	21,032
CPNU23	64.5	64.50	63.26	63.50	63.91	63.50	-1.49	254	1,000
CRCU23	38.53	38.53	38	38.25	38.39	38.25	-1.25	412	1,974
DELTAU23X	98.75	101.29	98.75	101.29	100.08	101.29	2.93	26	641
DTACU23X	6.53	6.53	6.53	6.53	6.53	6.68	0.15	1	5
EASTWU23	-	-	-	-	-	4.25	0.02	-	615
EAU23	53.19	54.69	53.19	54.25	54.09	54.50	0.82	210	16,310
EGCOU23	129	129.25	129	129.25	129.13	129.51	0.02	22	985
EPGU23	-	-	-	-	-	6.32	0.12	-	1,585
ERWU23	4.32	4.34	4.3	4.33	4.33	4.33	-0.01	521	2,561
ESSOU23	-	-	-	-	-	9.07	-0.05	-	5,898
GFPTU23	12.68	12.68	12.68	12.68	12.68	12.68	0.2	1	1,230
GLOBALU23X	-	-	-	-	-	15.41	0.2	-	1,755
GPSCU23	53.45	53.70	53.45	53.45	53.64	53.45	0.55	273	3,743
GULFU23	47.2	47.50	46.51	47.40	47.27	47.40	0.25	452	10,403
GUNKULU23	3.04	3.14	3.04	3.14	3.06	3.14	0.03	1,034	111,718
HANAU23	43.61	44.57	43.61	44.57	43.89	44.57	0.97	157	1,046
HMPROU23	-	-	-	-	-	13.68	-	-	2,490
ICHU23	-	-	-	-	-	13.23	0.3	200	5,977
INTUCHU23X	72.5	73.53	72.5	73.28	73.06	73.28	0.96	128	447
IRPCU23	2.28	2.33	2.27	2.32	2.30	2.32	0.02	516	13,107
ITDU23	1.29	1.32	1.29	1.30	1.31	1.31	0.02	33	9,589
IVLU23	33.14	33.99	32.95	33.71	33.54	33.71	0.96	466	6,204
JASU23	1.32	1.32	1.31	1.32	1.32	1.32	-0.02	27	57,049

blssk	เปิด	สูงสุด	ต่ำสุด	ปิด	เฉลี่ย	ราคาที่ใช้ชำระ ราคา	เปลี่ยนแปลง	ปริมาณ (สัญญา)	สถานะคงค้าง (สัญญา)
JMTU23	34	34.60	33.25	34.60	33.93	34.60	1.61	337	2,798
KBANKU23	130.49	131.56	130.45	131.50	130.97	131.50	0.71	666	7,346
KCEU23	35.98	36.75	35.63	36.75	36.05	36.70	0.91	164	2,665
KEXU23	9.67	9.67	9.42	9.42	9.49	9.42	-0.26	142	3,076
KKPU23	58	58.00	58	58.00	58.00	58.00	-	1	2,159
KTBU23	19.32	19.48	19.15	19.45	19.40	19.45	0.15	2,751	32,172
KTCU23	45	46.87	45	45.50	45.92	45.50	-1.24	12,229	57,685
LHU23	8.09	8.15	8.09	8.15	8.12	8.15	-0.11	20	3,914
LPNU23	-	-	-	-	-	4.09	0.02	-	205
MAJORU23	14.15	14.15	14.15	14.15	14.15	14.15	0.05	1	3,753
MBKU23	-	-	-	-	-	15.40	-0.11	-	753
MEGAU23	-	-	-	-	-	38.08	0.49	-	764
MINTU23	32.25	32.50	31.25	32.30	31.90	32.30	0.04	172	1,309
MTCU23	35.13	36.25	35.13	36.25	35.85	36.25	1.25	220	3,494
MU23	-	-	-	-	-	45.15	-	20	330
ORIU23	9.82	10.02	9.82	10.02	9.84	10.02	-0.08	31	4,810
ORU23	-	-	-	-	-	20.68	0.21	800	3,821
OSPU23X	27.51	29.12	27.51	29.12	28.32	27.43	-0.25	102	1,292
PLANBU23	-	-	-	-	-	7.97	0.25	-	5,634
PRMU23	-	-	-	-	-	6.31	-0.22	-	1,546
PSHU23	-	-	-	-	-	12.65	0.05	-	334
PSLU23	9.46	9.50	9.39	9.50	9.45	9.50	0.17	331	2,534
PTGU23	10.35	10.47	10	10.35	10.26	10.34	-0.18	2,232	11,639
PTTEPU23	153.02	154.77	152.95	154.77	153.56	154.75	1.87	497	2,508
PTTGCU23	38.55	39.00	38.3	39.00	38.59	39.00	0.2	97	4,266
PTTU23	33.5	33.70	33.4	33.70	33.61	33.70	0.24	615	13,940
QHU23	2.18	2.20	2.18	2.20	2.19	2.20	-0.02	3	1,302
RATCHU23	34.97	34.97	34.97	34.97	34.97	34.97	-0.09	1	1,326
RSU23X	14.5	14.50	14.09	14.48	14.29	14.12	0.3	4	25,283
SAMARTU23	5.64	5.64	5.39	5.39	5.54	5.39	-0.35	13	9,498
SAWADU23	45.32	45.80	45.32	45.74	45.64	45.74	0.24	827	11,546
SCBU23	107.16	107.31	106.81	107.31	107.10	107.31	-0.19	184	2,238
SCCU23	323	323.00	320.98	320.98	321.73	320.98	-2.02	65	1,452
SCGPU23	37.32	37.70	37.32	37.70	37.51	37.70	0.7	296	5,525
SGPU23	-	-	-	-	-	8.20	-	-	106
SIRIU23	1.84	1.84	1.82	1.84	1.83	1.84	-0.01	10,542	28,991
SPALIU23	19.77	20.25	19.77	20.25	20.01	20.25	0.05	2	872
SPCGU23	-	-	-	-	-	12.17	-0.08	-	2
SPRCU23	8	8.00	7.75	8.00	7.88	7.81	0.02	12	609
STAU23	16.6	16.60	16.6	16.60	16.60	16.60	0.15	101	1,540
STECU23	8.95	9.18	8.9	9.10	9.02	9.14	0.24	1,023	6,538
STGTU23	7.07	7.07	7.07	7.07	7.07	7.07	-0.15	111	2,462
STPIU23	-	-	-	-	-	3.31	0.04	-	20,565
SU23	-	-	-	-	-	1.25	-	-	5,057
SUPERU23	-	-	-	-	-	0.51	-0.01	-	33,617
TASCOU23	-	-	-	-	-	17.32	-0.43	-	166
TCAPU23	-	-	-	-	-	47.31	-0.25	-	410
THAIU23	-	-	-	-	-	3.40	-	-	-
THANIU23	3.27	3.27	3.22	3.22	3.25	3.20	0.02	2,003	8,019
THCOMU23	11.17	11.60	11.17	11.60	11.50	11.60	0.43	1,533	4,395
THGU23	-	-	-	-	-	65.34	-0.01	-	281
TISCOU23	-	-	-	-	-	95.04	0.26	-	40
TKNU23	9.97	9.98	9.97	9.98	9.97	10.09	0.01	70	14,258
TOAU23	-	-	-	-	-	27.51	0.5	-	333
TOPU23	44.5	45.50	44.5	45.50	45.28	45.50	0.95	228	2,500
TPIPLU23	1.44	1.44	1.44	1.44	1.44	1.43	-	4	1,581
TPIPPU23	-	-	-	-	-	3.24	-	-	1,722
TQMU23	-	-	-	-	-	25.35	0.35	-	4,712

blssk	เปิด	สูงสุด	ต่ำสุด	ปิด	เฉลี่ย	ราคาที่ใช้ชำระ ราคา	เปลี่ยนแปลง	ปริมาณ (สัญญา)	สถานะคงค้าง (สัญญา)
TRUEEU23X	-	-	-	-	-	6.68	0.15	-	59
TRUEU23	6.55	6.60	6.55	6.60	6.58	6.60	0.15	8,123	17,402
TTAU23	6.68	6.68	6.65	6.65	6.67	6.65	-0.01	2	1,991
TTBU23	1.52	1.53	1.51	1.53	1.52	1.53	-	5,142	26,116
TTCLU23	3.95	3.95	3.93	3.93	3.94	3.93	-0.16	15	3,154
TTWU23	8.5	8.50	8.5	8.50	8.50	8.50	0.09	1	652
TUU23	12.46	12.49	12.32	12.49	12.45	12.49	0.04	903	11,444
TVOU23	-	-	-	-	-	24.89	-0.25	-	110
UNIU23	2.36	2.38	2.32	2.37	2.34	2.39	-0.01	51	3,194
VGIU23	2.74	2.74	2.68	2.68	2.73	2.74	-0.04	510	5,334
VNGU23	-	-	-	-	-	4.10	-0.03	-	7,151
WHAU23	4.7	4.72	4.67	4.71	4.70	4.71	-0.06	4,098	8,887
Total								96,768	1,187,358

Source : SET Smart

BUALUANG SECURITIES PUBLIC COMPANY LIMITED (BLS) is a subsidiary of BANGKOK BANK PUBLIC COMPANY LIMITED (BBL). This document is produced based upon sources believed to be reliable but their accuracy, completeness or correctness is not guaranteed. The statements or expressions of opinion herein were arrived at after due and careful consideration to use as information for investment. Expressions of opinion contained herein are subject to change without notice. This document is not, and should not be construed as, an offer or the solicitation of an offer to buy or sell any securities. The use of any information shall be at the sole discretion and risk of the user.

BUALUANG SECURITIES PUBLIC COMPANY LIMITED MAY BE IN RELATIONSHIP WITH THE SECURITIES IN THIS REPORT. "Opinions, projections and other information contained in this report are based upon sources believed to be accurate including the draft prospectus, but no responsibility is accepted for any loss occasioned by reliance placed upon the contents hereof. Bualuang Securities Public Company Limited may from time to time perform investment, advisory or other services for companies mentioned in this report, as well as dealing (as principal or otherwise) in, or otherwise being interested in, any securities mentioned herein, This report does not constitute a solicitation to buy or sell any securities". Investors should carefully read details in the prospectus before making investment decision.






BUALUANG SECURITIES PUBLIC COMPANY LIMITED MAY ACT AS MARKET MAKER AND ISSUER OF DWs, AND ISSUER OF STRUCTURED NOTES ON THESE SECURITIES. The company may prepare the research reports on those underlying securities. Investors should carefully read the details of the derivative warrants and structured notes in the prospectus before making investment decisions.

ADVANC	AMATA	AOT	BDMS	BH	CBG	CENTEL	CPALL	GLOBAL	GPSC	IRPC	KBANK	KCE	KTC	MINT
PTG	PTT	PTTEP	PTTGC	SCB	SPRC	TOP	WHA	STA	BGRIM	GULF	MTC	AWC	CRC	CPF
CPN	HANA	HMPRO	IVL	OSP	SAWAD	BANPU	BCH	BTS	SCC	TU	INTUCH	RATCH	VGI	SCGP
COM7	DOHOME	JMT	CHG	TTB	BAM	BCP	AP	KTB	KKP	OR	BEM	GUNKUL	EA	SPALI
RBF	STGT	JMART	BEC	BLA	KEX	RCL	SINGER	TIDLOR	FORTH	TIPH	AAV	DELTA	SABUY	CKP
TRUE	PSL	SIRI	TQM	CK	ERW	MEGA	SNNP	TLI						

BUALUANG SECURITIES PUBLIC COMPANY LIMITED IS OR MAY BE AN UNDERWRITER/CO-UNDERWRITER/JOINT LEAD IN RESPECT OF THE INITIAL PUBLIC OFFERING (IPO) OF SECURITIES.

Financial Advisor	Lead underwriter/ Underwriter/ Co-underwriter
	KCG

CG Rating

Score Range	Score Range	Description
90 – 100		Excellent
80 – 89		Very Good
70 – 79		Good
60 – 69		Satisfactory
50 – 00359		Pass
Less than 50	No logo given	-

Thailand's Private Sector Collective Action Coalition Against Corruption programme (Thai CAC) under Thai Institute of Directors

- companies that have **declared** their intention to join CAC, and
- companies **certified** by CAC.

CORPORATE GOVERNANCE REPORT DISCLAIMER

This research report was prepared by Bualuang Securities Public Company Limited and refers to research prepared by Morgan Stanley. Morgan Stanley does not warrant or guarantee the accuracy or completeness of its research reports. Morgan Stanley reserves copyright and other proprietary rights in the material reproduced in this report. Morgan Stanley is under no obligation to inform Bualuang Securities or you if the views or information referred to or reproduced in this research report change.

Corporate Governance Report disclaimer

The disclosure of the survey result of the Thai Institute of Directors Association (IOD) regarding corporate governance is made pursuant to the policy of the Office of the Securities and Exchange Commission. The IOD survey is based on the information of a company listed on the Stock Exchange of Thailand and the Market for Alternative Investment disclosed to the public and able to be accessed by a general public investor. The result, therefore, is from the perspective of a third party. It is not an evaluation of operation and is not based on inside information.

The survey result is as of the date appearing in the Corporate Governance Report of Thai Listed Companies. As a result, the survey result may be changed after that date. Bualuang Securities Public Company Limited neither confirms nor certifies the accuracy of such survey results.

“Disclaimer: The disclosure of the Anti-Corruption Progress Indicators of a listed company on the Stock Exchange of Thailand, which is assessed by the relevant institution as disclosed by the Office of the Securities and Exchange Commission, is made in order to comply with the policy and sustainable development plan for the listed companies. The relevant institution made this assessment based on the information received from the listed company, as stipulated in the form for the assessment of Anti-corruption which refers to the Annual Registration Statement (Form 56-1), Annual Report (Form 56-2), or other relevant documents or reports of such listed company. The assessment result is therefore made from the perspective of a third party. It is not an assessment of operation and is not based on any inside information. Since this assessment is only the assessment result as of the date appearing in the assessment result, it may be changed after that date or when there is any change to the relevant information. Nevertheless, Bualuang Securities Public Company Limited neither confirms, verifies, nor certifies the accuracy and completeness of the assessment result.”

BUALUANG RESEARCH – RECOMMENDATION FRAMEWORK

STOCK RECOMMENDATIONS

BUY: Expected positive total returns of 15% or more over the next 12 months.

HOLD: Expected total returns of between -15% and +15% over the next 12 months.

SELL: Expected negative total returns of 15% or more over the next 12 months.

TRADING BUY: Expected positive total returns of 15% or more over the next 3 months.

SECTOR RECOMMENDATIONS

OVERWEIGHT: The industry, as defined by the analyst's coverage universe, is expected to outperform the relevant primary market index over the next 12 months.

NEUTRAL: The industry, as defined by the analyst's coverage universe, is expected to perform in line with the relevant primary market index over the next 12 months.

UNDERWEIGHT: The industry, as defined by the analyst's coverage universe, is expected to underperform the relevant primary market index over the next 12 months.

IMPORTANT DISCLOSURES FOR U.S. PERSONS

This research report was prepared by Bualuang Securities Public Company Limited (“BLS”). BLS is not a registered broker-dealer in the United States and, therefore, is not subject to U.S. rules regarding the preparation of research reports and the independence of research analysts. This research report is provided for distribution to “major U.S. institutional investors” in reliance on the exemption from registration provided by Rule 15a-6 of the U.S. Securities Exchange Act of 1934, as amended (the “Exchange Act”).

Under no circumstances should any recipient of this research report effect any transaction to buy or sell securities or related financial instruments through BLS. Rosenblatt Securities Inc. accepts responsibility for the contents of this research report, subject to the terms set out below, to the extent that it is delivered to a U.S. person other than a major U.S. institutional investor.

The analyst whose name appears in this research report is not registered or qualified as a research analyst with the Financial Industry Regulatory Authority (“FINRA”) and may not be an associated person of Rosenblatt Securities Inc. and, therefore, may not be subject to applicable restrictions under FINRA Rules on communications with a subject company, public appearances and trading securities held by a research analyst account.

Additional Disclosures

This research report is for distribution only under such circumstances as may be permitted by applicable law. This research report has no regard to the specific investment objectives, financial situation or particular needs of any specific recipient, even if sent only to a single recipient. This research report is not guaranteed to be a complete statement or summary of any securities, markets, reports or developments referred to in this research report. Neither BLS nor any of its directors, officers, employees or agents shall have any liability, however arising, for any error, inaccuracy or incompleteness of fact or opinion in this research report or lack of care in this research report’s preparation or publication, or any losses or damages which may arise from the use of this research report.

BLS may rely on information barriers, such as “Chinese Walls” to control the flow of information within the areas, units, divisions, groups, or affiliates of BLS.

Investing in any non-U.S. securities or related financial instruments (including ADRs) discussed in this research report may present certain risks. The securities of non-U.S. issuers may not be registered with, or be subject to the regulations of, the U.S. Securities and Exchange Commission. Information on such non-U.S. securities or related financial instruments may be limited. Foreign companies may not be subject to audit and reporting standards and regulatory requirements comparable to those in effect within the United States.

The value of any investment or income from any securities or related financial instruments discussed in this research report denominated in a currency other than U.S. dollars is subject to exchange rate fluctuations that may have a positive or adverse effect on the value of or income from such securities or related financial instruments.

Past performance is not necessarily a guide to future performance and no representation or warranty, express or implied, is made by BLS with respect to future performance. Income from investments may fluctuate. The price or value of the investments to which this research report relates, either directly or indirectly, may fall or rise against the interest of investors. Any recommendation or opinion contained in this research report may become outdated as a consequence of changes in the environment in which the issuer of the securities under analysis operates, in addition to changes in the estimates and forecasts, assumptions and valuation methodology used herein.

No part of the content of this research report may be copied, forwarded or duplicated in any form or by any means without the prior consent of BLS and BLS accepts no liability whatsoever for the actions of third parties in this respect.