

# TFEX Daily

16 มีนาคม 2566

## S50H23

สถานะซื้อ แนะนำขายลือคก้าโรโซนด้าน

Gold spot

แผนเทรด....สถานะซื้อแนะนำขายลือคก้าโรโซนรับ!

“แผนเทรด..... panic แล้วตีกลับ”

## S50H23

แผนเทรด.... สถานะซื้อแนะนำขายลือคก้าโรโซนด้าน”

มุมมอง: ดัชนีหลุด low แล้วลงลึก เด้งแรง เนื่องจาก RSI ลงต่ำสุดๆ เข้าสู่เขตแดน extremely oversold! ล่าสุดส่งสัญญาณฟื้นตัว signal recovery!

แผนเทรด....สถานะซื้อ มีอยู่แนะนำขายลือคก้าโรโซนด้านที่ 940-945 จุด ในทางตรงข้ามสถานะขายแนะนำลือคก้าโรโซนด้านที่ 932-935 จุด

Note:เนื่องจากตลาด TFEX มีความผันผวนมาก หากขาดทุนมากกว่า 10% ของพอร์ต แนะนำปิดสถานะ

S50H23: รับ 920-925 ด้าน 940-945

GFJ23: รับ 30,500 ด้าน 32,000

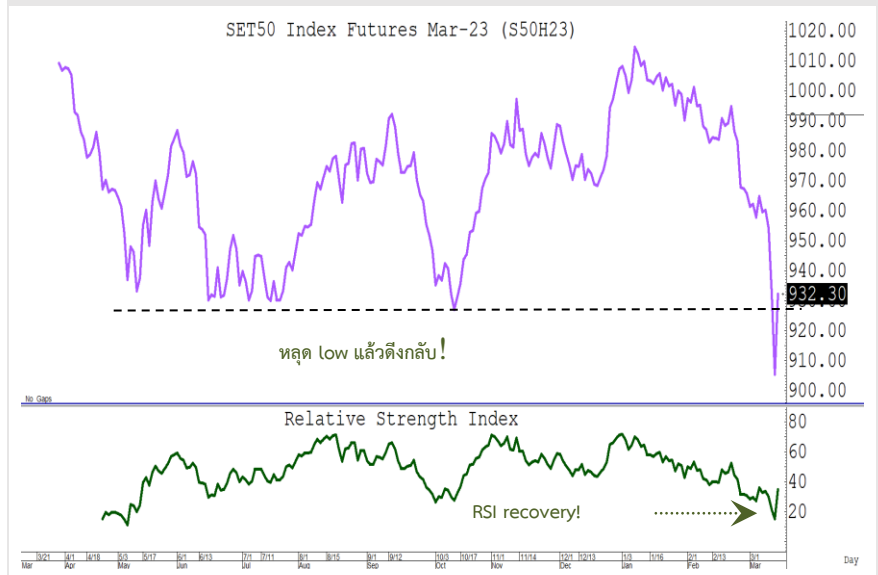
มุมมองทางเทคนิค โดย คุณธนรัตน์ อิศรกุล

นักวิเคราะห์การลงทุนปัจจัยพื้นฐานด้านหลักทรัพย์และปัจจัยทางเทคนิค

Thanarut@bualuang.co.th

Tel. (662) 618-1334

SET50 Index Future



“ทะลุ high แล้วย่อ....throw back”

## Gold spot

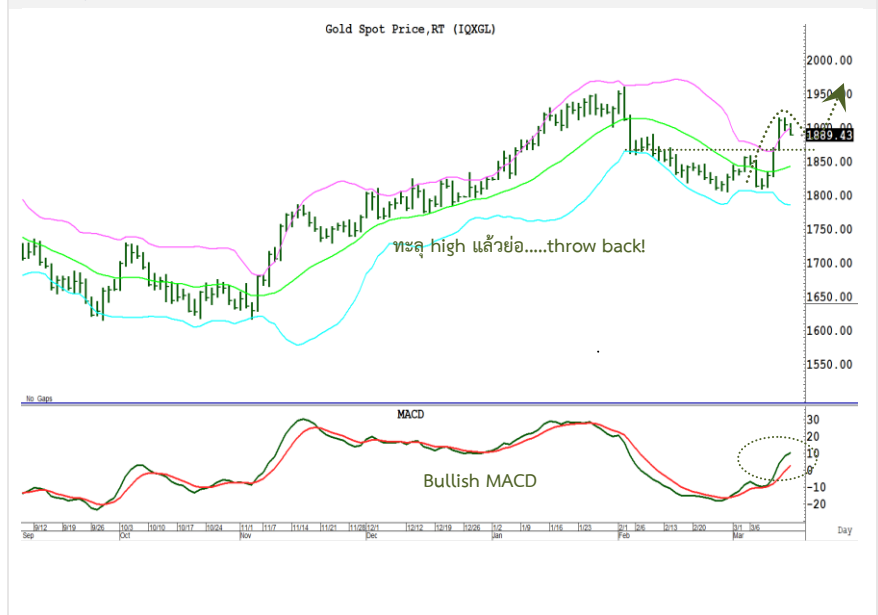
จับสัญญาณเทรด....ทองคำ

มุมมอง: Gold spot ร้อนแรง! ปรับตัวทะลุ high และบริเวณ \$1,914 อ่อนๆ ทำจุดสูงสุดในรอบ 1 เดือน ทะลุ band ทะลุ > 2SD แต่ยืนไม่ได้ ตามคาด ล่าสุดอ่อนตัวลงต่ำกว่า \$1,900/ออนซ์ อย่างไรก็ตาม MACD หนุนสัญญาณขาขึ้นระยะกลาง

แผนเทรด....สถานะซื้อแนะนำขายเปิดสถานะบริเวณโซนรับ \$1,870 (ตามเดิมเปลี่ยนเป็นรับ) ลุ้นด้าน \$1,950 ในทางตรงข้ามสถานะขายต้องระวัง สัญญาณกลับตัวขาขึ้นระยะกลาง

Note: แผนปิดความเสี่ยง...หากผลตอบแทนติดลบมากกว่า 10% ของพอร์ต แนะนำขายปิดสถานะ

Gold Spot



วิกิจ ถาวรธรรมรัตน์

นักวิเคราะห์การลงทุนปัจจัยพื้นฐานด้านตลาดทุน/ปัจจัยทางเทคนิค

Wikij.tir@bualuang.co.th Tel. (662) 618-1336

SET50 Index Futures

หลักทรัพย์	เปิด	สูงสุด	ต่ำสุด	ปิด	เฉลี่ย	ราคาที่ใช้ชำระ ราคา	เปลี่ยนแปลง	ปริมาณ (สัญญา)	สถานะคงค้าง (สัญญา)
SET50	923.89	944.35	923.56	937.98	932.45	N/A	27.27	N/A	N/A
S50H23	916.00	943.30	915.1	933.00	930.30	932.30	26.9	343,066	473,710
S50J23	915	941.00	915	930.60	926.80	930.60	26.6	130	150
S50K23	916.7	939.00	915.8	929.70	925.60	929.70	27.2	122	207
S50M23	915	939.20	911.5	929.30	926.50	928.80	27	95,770	109,428
S50U23	909	935.50	908.7	925.70	922.50	925.30	26.2	14,078	35,077
S50Z23	914	936.00	910	926.60	922.30	925.60	25.4	8,322	17,234
<b>Total</b>								<b>461,488</b>	<b>635,806</b>

Source : SET Smart

#### Trading by Investor Type - SET50 Index Futures

##### 5 วันย้อนหลัง

วันที่	นักลงทุนต่างประเทศ ปริมาณ			นักลงทุนสถาบัน ปริมาณ			นักลงทุนภายในประเทศ ปริมาณ			รวม	
	ซื้อ	ขาย	สุทธิ	ซื้อ	ขาย	สุทธิ	ซื้อ	ขาย	สุทธิ	ปริมาณ	สถานะคงค้าง
15/03/2023	203,304	142,016	61,288	74,526	77,750	-3,224	183,658	241,722	-58,064	461,488	635,806
14/03/2023	220,939	186,785	34,154	100,103	96,290	3,813	222,019	259,986	-37,967	543,061	646,067
13/03/2023	163,713	166,913	-3,200	89,229	80,995	8,234	210,885	215,919	-5,034	463,827	656,582
10/03/2023	80,543	94,297	-13,754	39,038	38,072	966	105,781	92,993	12,788	225,362	678,448
09/03/2023	94,711	82,812	11,899	30,642	30,431	211	82,619	94,729	-12,110	207,972	676,936

##### 4 เดือนย้อนหลัง

วันที่	นักลงทุนต่างประเทศ ปริมาณ			นักลงทุนสถาบัน ปริมาณ			นักลงทุนภายในประเทศ ปริมาณ			รวม	
	ซื้อ	ขาย	สุทธิ	ซื้อ	ขาย	สุทธิ	ซื้อ	ขาย	สุทธิ	ปริมาณ	สถานะคงค้าง
มี.ค. 2023	1,320,714	1,275,190	45,524	541,586	519,387	22,199	1,379,758	1,447,481	-67,723	3,242,058	635,806
ก.พ. 2023	1,468,424	1,592,263	-123,839	668,550	650,734	17,816	2,019,686	1,913,663	106,023	4,156,660	664,829
ม.ค. 2023	1,346,543	1,446,322	-99,779	678,348	675,116	3,232	1,994,379	1,897,832	96,547	4,019,270	673,734
ธ.ค. 2022	2,179,936	2,239,881	-59,945	738,467	749,419	-10,952	1,946,510	1,875,613	70,897	4,864,913	563,223

##### 4 ไตรมาสย้อนหลัง

วันที่	นักลงทุนต่างประเทศ ปริมาณ			นักลงทุนสถาบัน ปริมาณ			นักลงทุนภายในประเทศ ปริมาณ			รวม	
	ซื้อ	ขาย	สุทธิ	ซื้อ	ขาย	สุทธิ	ซื้อ	ขาย	สุทธิ	ปริมาณ	สถานะคงค้าง
Q1/2023	4,135,681	4,313,775	-178,094	1,888,484	1,845,237	43,247	5,393,823	5,258,976	134,847	11,417,988	635,806
Q4/2022	5,773,579	5,666,820	106,759	2,433,982	2,462,801	-28,819	5,991,792	6,069,732	-77,940	14,199,353	563,223
Q3/2022	6,188,060	6,186,241	1,819	2,707,073	2,714,363	-7,290	6,950,031	6,944,560	5,471	15,845,164	495,136
Q2/2022	4,663,806	4,722,909	-59,103	2,045,996	2,038,871	7,125	5,380,581	5,328,603	51,978	12,090,383	414,186

Source : SET Smart

#### Metal Futures

หลักทรัพย์	เปิด	สูงสุด	ต่ำสุด	ปิด	เฉลี่ย	ราคาที่ใช้ชำระ ราคา	เปลี่ยนแปลง	ปริมาณ (สัญญา)	สถานะคงค้าง (สัญญา)
GOH23	1,909	1,917	1,890	1,900	1,907	1,899.80	-7.3	23480	12,623
SVFH23	22	22	22	22	22	21.75	0.15	279	988
GF10J23	31,320	31,440	31,070	31,240	31,277	31,250.00	-50	3884	8,261
GFJ23	31,360	31,420	31,160	31,210	31,313	31,370.00	80	104	196
GF10M23	31,430	31,510	31,160	31,320	31,353	31,320.00	-60	1221	8,040
GFM23	31,440.00	31,460.00	31,180.00	31,180.00	31,352.00	31,180.00	-200	80	161
GOM23	1,936	1,945	1,918	1,928	1,933	1,927.10	-7.2	17408	7,051
SVFM23	22	22	22	22	22	22.13	0.13	52	762
GF10Q23	31,490	31,580	31,230	31,390	31,447	31,400.00	-40	367	1,867
GFQ23	31,540.00	31,590.00	31,240.00	31,240.00	31,443.00	31,240.00	-190	53	44

Source : SET Smart

#### Single Stock Futures

blssk	เปิด	สูงสุด	ต่ำสุด	ปิด	เฉลี่ย	ราคาที่ใช้ชำระ ราคา	เปลี่ยนแปลง	ปริมาณ (สัญญา)	สถานะคงค้าง (สัญญา)
AAVH23	2.64	2.72	2.62	2.63	2.68	2.63	0.07	1,611	9,149
ADVANCH23	203.48	205.47	202.2	205.47	203.50	207.90	6.9	195	2,013
AEONTS23	187.53	190.00	186.65	190.00	187.95	190.00	3	10	140
AMATAH23	21.15	21.77	21.15	21.77	21.46	21.77	1.01	325	655
AOTH23	67.98	70.97	67.98	70.42	69.96	70.42	3.99	1,732	1,931
APH23	11.87	11.97	11.87	11.92	11.91	11.92	-0.28	546	47
AWCH23	5.35	5.42	5.32	5.37	5.37	5.37	0.08	209	2,361
BAH23	12.4	12.60	12.34	12.60	12.46	12.60	0.41	9	2,104
BAMH23	13.38	13.39	13.2	13.30	13.31	13.30	0.3	676	10,153
BANPUH23	10.55	10.68	10.51	10.59	10.57	10.58	0.11	812	23,961
BAYH23	-	-	-	-	-	28.74	0.5	-	36
BBLH23	153	154.00	151.5	153.00	152.71	153.00	4.5	144	316
BCHH23	19.27	19.53	19.24	19.53	19.27	19.53	0.37	277	1,488
BCPGH23	8.89	9.00	8.89	9.00	8.97	9.00	0.4	145	35,466
BCPH23	31.24	31.25	31.24	31.25	31.25	31.25	0.58	4	1,965
BDMH23	28.74	28.74	27.57	28.02	27.69	28.02	1.01	449	1,981
BEAUTYH23	1.24	1.26	1.24	1.25	1.25	1.25	0.01	75	38,153
BECH23	8.36	8.79	8.35	8.50	8.41	8.50	0.3	74	839
BEMH23	8.73	8.85	8.73	8.85	8.79	8.85	0.25	2,562	4,935
BGRIMH23	36.9	38.09	36.9	38.09	37.70	38.09	2.44	147	1,122
BHH23	205	213.00	205	213.00	209.72	213.00	9	90	576
BJCH23	36.45	36.49	36.32	36.49	36.42	36.49	1.07	7	498
BLAH23	29.42	29.59	29.33	29.59	29.43	29.59	0.59	26	808
BLANDH23	0.95	0.98	0.95	0.97	0.96	0.97	0.02	1,526	39,446
BPPH23	-	-	-	-	-	15.08	0.3	-	669
BTSH23	6.85	7.20	6.85	7.09	7.00	7.09	0.41	5,089	12,268
CBGH23	96	98.01	96	98.01	97.06	98.01	2.9	48	1,803
CENTELH23	53.1	53.90	53.1	53.65	53.66	53.65	0.65	11	864
CHGH23	-	-	-	-	-	3.62	0.07	1,000	2,114
CKH23	19.35	19.35	19.35	19.35	19.35	19.05	-0.05	302	367
CKPH23	3.93	3.97	3.91	3.97	3.92	3.93	0.07	15	23,657
COM7H23	30.55	31.00	30.3	31.00	30.62	31.00	1.7	640	4,517
CPALLH23	60.18	61.36	60.18	60.82	60.83	60.82	1.48	321	1,956
CPFH23	21.05	21.39	21	21.37	21.26	21.37	0.28	891	13,583
CPNH23	66	66.00	65.84	65.84	65.92	65.84	1.27	22	370
CRCH23	41.43	43.06	41.43	43.06	41.97	43.06	1.76	303	736
DELTAH23	940	973.00	940	969.20	961.01	969.20	24.62	137	1,280
DTACH23X	7.55	7.67	7.4	7.67	7.50	7.67	0.32	280	1,836
EAH23	73	74.70	72.8	74.60	73.52	74.60	3.5	728	5,654
EASTWH23	-	-	-	-	-	4.89	0.06	-	3
EGCOH23	152.74	153.50	152.24	153.00	152.92	152.98	0.98	41	712
EPGH23	8.08	8.08	8.08	8.08	8.08	8.08	0.08	504	2,076
ERWH23	4.85	4.85	4.85	4.85	4.85	4.85	0.07	2	3,040
ESSOH23	8.58	8.79	8.53	8.68	8.59	8.55	0.04	515	11,375
GFP23	11.6	11.60	11.5	11.52	11.54	11.52	-0.11	13	6,413
GLOBALH23X	-	-	-	-	-	19.40	0.1	-	442
GPSCH23	64.95	65.20	64.5	65.20	64.97	65.20	2.2	1,806	1,972
GULFH23	49.7	50.50	49.52	50.45	50.14	50.45	1.47	66	9,889
GUNKULH23	3.79	3.79	3.68	3.78	3.75	3.78	0.06	3,643	40,700
HANAH23	52.75	52.75	51.95	52.00	52.27	52.00	1.95	103	977
HMPROH23	14.1	14.10	14.1	14.10	14.10	14.10	0.4	3	662
ICHIH23	12.87	13.04	12.87	13.00	12.99	13.00	0.45	204	9,350
INTUCHH23X	71.82	71.82	71.82	71.82	71.82	71.82	0.99	1	157
IRPCH23	2.7	2.73	2.66	2.70	2.71	2.70	0.09	196	10,564
ITDH23	1.48	1.61	1.48	1.55	1.49	1.55	0.13	1,311	37,952
IVLH23	34.9	35.20	34.7	35.20	35.00	35.20	0.7	424	5,887
JASH23	1.86	1.94	1.85	1.90	1.90	1.90	0.07	25,049	98,598

blssk	เปิด	สูงสุด	ต่ำสุด	ปิด	เฉลี่ย	ราคาที่ใช้ชำระ ราคา	เปลี่ยนแปลง	ปริมาณ (สัญญา)	สถานะคงค้าง (สัญญา)
JMTH23	43.25	43.32	41.49	42.87	42.35	42.87	-0.07	256	1,940
KBANKH23	128	131.89	128	131.50	131.01	131.50	4.87	737	3,392
KCEH23	45	45.90	44.65	45.70	45.28	45.70	1.84	439	1,972
KEXH23	15.06	15.06	15.06	15.06	15.06	15.01	0.25	5	3,488
KKPH23	64.12	64.37	64.12	64.37	64.22	64.37	1.88	175	1,355
KTBH23	16.3	16.70	16.3	16.60	16.58	16.60	0.45	1,199	7,273
KTCH23	53.34	54.00	52.53	53.90	53.52	53.90	2.88	11	29,110
LHH23	9.43	9.48	9.43	9.48	9.47	9.48	0.31	28	607
LPNH23	-	-	-	-	-	4.17	0.01	-	906
MAJORH23	16.82	16.95	16.82	16.95	16.85	16.95	0.55	2,260	5,014
MBKH23	-	-	-	-	-	16.28	0.97	-	1,823
MEGAH23	44.46	44.47	44.46	44.47	44.46	44.47	0.55	3	86
MH23	54.25	54.25	54.25	54.25	54.25	54.25	1.27	173	265
MINTH23	31.6	31.60	31.51	31.51	31.55	31.51	1.18	2	2,718
MTCH23	31.99	32.08	31.9	31.90	32.03	31.90	0.6	18	2,838
ORH23	20.3	20.33	20.13	20.30	20.31	20.30	0.21	271	5,504
ORIH23	11.77	12.05	11.77	12.05	12.00	12.05	0.37	521	611
OSPH23	-	-	-	-	-	31.49	0.18	-	1,776
PLANBH23	8.65	8.80	8.65	8.80	8.66	8.80	0.55	20	599
PRMH23	-	-	-	-	-	7.34	0.14	8,000	11,653
PSHH23	12.57	12.57	12.57	12.57	12.57	12.47	0.47	11	437
PSLH23	14.86	15.30	14.86	15.00	15.09	15.00	0.7	14	1,254
PTGH23	13.3	13.38	13.15	13.15	13.30	13.15	0.15	75	4,296
PTTEPH23	144.5	145.00	143.5	144.20	144.21	144.00	2.52	519	1,534
PTTGCH23	46	46.46	45.55	46.19	45.82	46.00	0.93	138	3,446
PTTH23	30.49	30.53	30	30.10	30.27	30.15	0.5	587	5,476
QHH23	2.35	2.39	2.35	2.39	2.38	2.32	-	3	959
RATCHH23X	38.01	38.01	38.01	38.01	38.01	38.01	1	1	1,487
RSH23	15.45	15.45	15.45	15.45	15.45	15.45	0.55	210	11,698
SAMARTH23	4.87	4.87	4.8	4.80	4.83	4.80	-	5	4,606
SAWADH23	49.54	49.56	48.8	49.35	49.24	49.35	1.06	257	2,983
SCBBH23	100.2	100.20	100.2	100.20	100.20	100.20	2.91	1	86
SCBH23	100.44	101.38	99.75	101.00	100.36	100.99	0.53	1,706	6,310
SCCH23	323.4	325.93	323.4	323.45	324.76	323.45	5.45	46	781
SCGPH23	51.3	51.30	47.62	48.75	48.72	48.75	-0.75	1,110	4,428
SGPH23	-	-	-	-	-	9.39	-0.34	-	164
SH23	1.78	1.78	1.78	1.78	1.78	1.75	0.04	13,006	3,742
SIRIH23	1.69	1.70	1.66	1.68	1.68	1.68	0.03	4,866	33,494
SPALIH23	21.91	22.00	21.9	21.90	21.93	21.90	0.49	6	591
SPCGH23	-	-	-	-	-	13.67	0.55	-	21
SPRCH23	-	-	-	-	-	10.46	0.46	-	1,564
STAH23	22.17	22.24	22.07	22.13	22.19	22.13	0.7	214	908
STECH23	12.17	12.37	12.13	12.34	12.23	12.32	0.15	117	3,622
STGTH23	10.16	10.43	10.16	10.25	10.29	10.25	0.25	581	3,705
STPIH23	4.06	4.06	4.06	4.06	4.06	4.06	0.08	4,007	22,852
SUPERH23	0.59	0.59	0.56	0.56	0.58	0.56	-0.01	6	29,771
TASCOH23	19.72	20.09	19.72	20.09	19.95	20.09	0.49	120	584
TCAPH23	44	44.50	44	44.50	44.22	44.50	0.9	5	215
THAIH23	-	-	-	-	-	3.33	-	-	-
THANIH23	3.6	3.60	3.58	3.60	3.59	3.60	0.12	16	2,168
THCOMH23	13.83	14.03	13.62	13.69	13.70	13.69	0.39	55	4,370
THGH23	68.95	68.95	68.95	68.95	68.95	68.95	-0.56	1	14
TISCOH23	100.88	100.94	99.26	100.94	100.13	100.92	1.92	30	212
TKNH23	10.03	10.03	9.9	9.90	9.93	9.91	0.16	51	16,960
TOAH23	32.59	32.59	32.59	32.59	32.59	32.59	-0.16	2	1,361
TOPH23	52	52.00	51.4	51.40	51.80	51.40	0.75	18	503
TPIPLH23	1.56	1.60	1.56	1.60	1.57	1.56	0.03	21,012	4,556
TPIPPH23	3.21	3.35	3.21	3.35	3.28	3.35	0.09	522	1,662
TQMH23	33.09	33.09	33.09	33.09	33.09	33.09	0.91	181	4,262

blssk	เปิด	สูงสุด	ต่ำสุด	ปิด	เฉลี่ย	ราคาที่ใช้ชำระ ราคา	เปลี่ยนแปลง	ปริมาณ (สัญญา)	สถานะคงค้าง (สัญญา)
TRUEEH23X	7.42	7.65	7.37	7.65	7.49	7.65	0.28	372	24,294
TRUEH23	7.36	7.65	7.36	7.65	7.43	7.65	0.35	6,138	3,492
TTAH23	7.8	7.95	7.8	7.82	7.83	7.82	0.02	107	1,370
TTBH23	1.33	1.34	1.32	1.33	1.33	1.33	0.01	1,221	22,063
TTCLH23	-	-	-	-	-	4.22	0.08	500	2,023
TTWH23	8.63	8.72	8.63	8.72	8.68	8.63	0.15	202	277
TUH23	14.65	14.70	14.43	14.68	14.57	14.67	0.62	633	8,297
TVOH23X	-	-	-	-	-	27.48	0.55	-	147
UNIQH23	4.09	4.13	4.09	4.13	4.10	4.13	0.13	11	8,092
VGIH23	3.89	3.90	3.89	3.90	3.90	3.90	-	7	3,030
VNGH23	-	-	-	-	-	4.72	0.06	-	7,098
<b>Total</b>								<b>130,077</b>	<b>856,116</b>

Source : SET Smart

BUALUANG SECURITIES PUBLIC COMPANY LIMITED (BLS) is a subsidiary of BANGKOK BANK PUBLIC COMPANY LIMITED (BBL). This document is produced based upon sources believed to be reliable but their accuracy, completeness or correctness is not guaranteed. The statements or expressions of opinion herein were arrived at after due and careful consideration to use as information for investment. Expressions of opinion contained herein are subject to change without notice. This document is not, and should not be construed as, an offer or the solicitation of an offer to buy or sell any securities. The use of any information shall be at the sole discretion and risk of the user.

BUALUANG SECURITIES PUBLIC COMPANY LIMITED MAY BE IN RELATIONSHIP WITH THE SECURITIES IN THIS REPORT. "Opinions, projections and other information contained in this report are based upon sources believed to be accurate including the draft prospectus, but no responsibility is accepted for any loss occasioned by reliance placed upon the contents hereof. Bualuang Securities Public Company Limited may from time to time perform investment, advisory or other services for companies mentioned in this report, as well as dealing (as principal or otherwise) in, or otherwise being interested in, any securities mentioned herein, This report does not constitute a solicitation to buy or sell any securities". Investors should carefully read details in the prospectus before making investment decision.

BUALUANG SECURITIES PUBLIC COMPANY LIMITED MAY ACT AS MARKET MAKER AND ISSUER OF DWs, AND ISSUER OF STRUCTURED NOTES ON THESE SECURITIES. The company may prepare the research reports on those underlying securities. Investors should carefully read the details of the derivative warrants and structured notes in the prospectus before making investment decisions.

ADVANC	AMATA	AOT	BDMS	BH	CBG	CENTEL	CPALL	GLOBAL	GPSC	IRPC	KBANK	KCE	KTC	MINT
PTG	PTT	PTTEP	PTTGC	SCB	SPRC	TOP	WHA	ESSO	STA	BGRIM	GULF	MTC	AWC	CRC
CPF	CPN	HANA	HMPRO	I/L	OSP	SAWAD	BANPU	BCH	BTS	CK	SCC	STEC	TISCO	TU
INTUCH	RATCH	VGI	SCGP	COM7	DOHOME	JMT	CHG	TTB	BAM	BCP	AP	KTB	KKP	OR
BEM	GUNKUL	EA	SPALI	RBF	STGT	MEGA	JMART	BEC	SYNEX	BLA	KEX	RCL	SINGER	STARK
TIDLOR	FORTH	TIPH	AAV	DELTA	BCPG	SABUY	THG	CKP	TRUE					

BUALUANG SECURITIES PUBLIC COMPANY LIMITED IS OR MAY BE AN UNDERWRITER/CO-UNDERWRITER/JOINT LEAD IN RESPECT OF THE INITIAL PUBLIC OFFERING (IPO) OF SECURITIES.

<b>Financial Advisor</b>	<b>Lead underwriter/ Underwriter/ Co-underwriter</b>

**CG Rating**

Score Range	Score Range	Description
90 – 100		Excellent
80 – 89		Very Good
70 – 79		Good
60 – 69		Satisfactory
50 – 00359		Pass
Less than 50	No logo given	-

**Thailand's Private Sector Collective Action Coalition Against Corruption programme (Thai CAC) under Thai Institute of Directors**

- companies that have **declared** their intention to join CAC, and
- companies **certified** by CAC.

This research report was prepared by Bualuang Securities Public Company Limited and refers to research prepared by Morgan Stanley. Morgan Stanley does not warrant or guarantee the accuracy or completeness of its research reports. Morgan Stanley reserves copyright and other proprietary rights in the material reproduced in this report. Morgan Stanley is under no obligation to inform Bualuang Securities or you if the views or information referred to or reproduced in this research report change.

#### Corporate Governance Report disclaimer

The disclosure of the survey result of the Thai Institute of Directors Association (IOD) regarding corporate governance is made pursuant to the policy of the Office of the Securities and Exchange Commission. The IOD survey is based on the information of a company listed on the Stock Exchange of Thailand and the Market for Alternative Investment disclosed to the public and able to be accessed by a general public investor. The result, therefore, is from the perspective of a third party. It is not an evaluation of operation and is not based on inside information.

The survey result is as of the date appearing in the Corporate Governance Report of Thai Listed Companies. As a result, the survey result may be changed after that date. Bualuang Securities Public Company Limited neither confirms nor certifies the accuracy of such survey results.

“Disclaimer: The disclosure of the Anti-Corruption Progress Indicators of a listed company on the Stock Exchange of Thailand, which is assessed by the relevant institution as disclosed by the Office of the Securities and Exchange Commission, is made in order to comply with the policy and sustainable development plan for the listed companies. The relevant institution made this assessment based on the information received from the listed company, as stipulated in the form for the assessment of Anti-corruption which refers to the Annual Registration Statement (Form 56-1), Annual Report (Form 56-2), or other relevant documents or reports of such listed company. The assessment result is therefore made from the perspective of a third party. It is not an assessment of operation and is not based on any inside information. Since this assessment is only the assessment result as of the date appearing in the assessment result, it may be changed after that date or when there is any change to the relevant information. Nevertheless, Bualuang Securities Public Company Limited neither confirms, verifies, nor certifies the accuracy and completeness of the assessment result.”

### BUALUANG RESEARCH – RECOMMENDATION FRAMEWORK

#### STOCK RECOMMENDATIONS

**BUY:** Expected positive total returns of 15% or more over the next 12 months.

**HOLD:** Expected total returns of between -15% and +15% over the next 12 months.

**SELL:** Expected negative total returns of 15% or more over the next 12 months.

**TRADING BUY:** Expected positive total returns of 15% or more over the next 3 months.

#### SECTOR RECOMMENDATIONS

**OVERWEIGHT:** The industry, as defined by the analyst's coverage universe, is expected to outperform the relevant primary market index over the next 12 months.

**NEUTRAL:** The industry, as defined by the analyst's coverage universe, is expected to perform in line with the relevant primary market index over the next 12 months.

**UNDERWEIGHT:** The industry, as defined by the analyst's coverage universe, is expected to underperform the relevant primary market index over the next 12 months.

## IMPORTANT DISCLOSURES FOR U.S. PERSONS

This research report was prepared by Bualuang Securities Public Company Limited (“BLS”). BLS is not a registered broker-dealer in the United States and, therefore, is not subject to U.S. rules regarding the preparation of research reports and the independence of research analysts. This research report is provided for distribution to “major U.S. institutional investors” in reliance on the exemption from registration provided by Rule 15a-6 of the U.S. Securities Exchange Act of 1934, as amended (the “Exchange Act”).

Under no circumstances should any recipient of this research report effect any transaction to buy or sell securities or related financial instruments through BLS. Rosenblatt Securities Inc. accepts responsibility for the contents of this research report, subject to the terms set out below, to the extent that it is delivered to a U.S. person other than a major U.S. institutional investor.

The analyst whose name appears in this research report is not registered or qualified as a research analyst with the Financial Industry Regulatory Authority (“FINRA”) and may not be an associated person of Rosenblatt Securities Inc. and, therefore, may not be subject to applicable restrictions under FINRA Rules on communications with a subject company, public appearances and trading securities held by a research analyst account.

## Additional Disclosures

This research report is for distribution only under such circumstances as may be permitted by applicable law. This research report has no regard to the specific investment objectives, financial situation or particular needs of any specific recipient, even if sent only to a single recipient. This research report is not guaranteed to be a complete statement or summary of any securities, markets, reports or developments referred to in this research report. Neither BLS nor any of its directors, officers, employees or agents shall have any liability, however arising, for any error, inaccuracy or incompleteness of fact or opinion in this research report or lack of care in this research report’s preparation or publication, or any losses or damages which may arise from the use of this research report.

BLS may rely on information barriers, such as “Chinese Walls” to control the flow of information within the areas, units, divisions, groups, or affiliates of BLS.

Investing in any non-U.S. securities or related financial instruments (including ADRs) discussed in this research report may present certain risks. The securities of non-U.S. issuers may not be registered with, or be subject to the regulations of, the U.S. Securities and Exchange Commission. Information on such non-U.S. securities or related financial instruments may be limited. Foreign companies may not be subject to audit and reporting standards and regulatory requirements comparable to those in effect within the United States.

The value of any investment or income from any securities or related financial instruments discussed in this research report denominated in a currency other than U.S. dollars is subject to exchange rate fluctuations that may have a positive or adverse effect on the value of or income from such securities or related financial instruments.

Past performance is not necessarily a guide to future performance and no representation or warranty, express or implied, is made by BLS with respect to future performance. Income from investments may fluctuate. The price or value of the investments to which this research report relates, either directly or indirectly, may fall or rise against the interest of investors. Any recommendation or opinion contained in this research report may become outdated as a consequence of changes in the environment in which the issuer of the securities under analysis operates, in addition to changes in the estimates and forecasts, assumptions and valuation methodology used herein.

No part of the content of this research report may be copied, forwarded or duplicated in any form or by any means without the prior consent of BLS and BLS accepts no liability whatsoever for the actions of third parties in this respect.