

TFEX Daily

17 เมษายน 2566

S50M23

ลู่ทะลุโซนต้าน.....เน้นฝั่ง "ซื้อ"

Gold spot

แผนเดิมตั้งขึ้นขาย แล้วรอรับกลับ!

"สถานะซื้อถือรอเปิดเทรต...หลังสงกรานต์"

S50M23

"ดัชนีลู่ทะลุโซนต้าน"

มุมมอง: ดัชนีปัจจุบันกำลังทดสอบโซนต้าน (แนวรับเดิมเปลี่ยนเป็นต้าน) จับตา MACD จ่อทะลุเส้น 0 ปังซี้สัญญาณกลับตัว...ลู่ทะลุต้านหลังสงกรานต์

แผนเทรต... แนะนำทยอยเปิดสถานะซื้อ โซนรับ 958-960 ต้าน 970 ถัดไป 975 จุด (สถานะซื้อถือข้ามรอเปิดเทรตหลังสงกรานต์) ในทางตรงข้ามฝั่งขายแนะนำรอ ดูจังหวะยังไม่รีบ

เงื่อนไขผิดทางหากปรับตัวลงต่ำกว่า low ที่ 955 แนะนำปิดสถานะหรือกรณีขาดทุนมากกว่า 10% ของพอร์ต)

S50M23: รับ 958 ต้าน 970

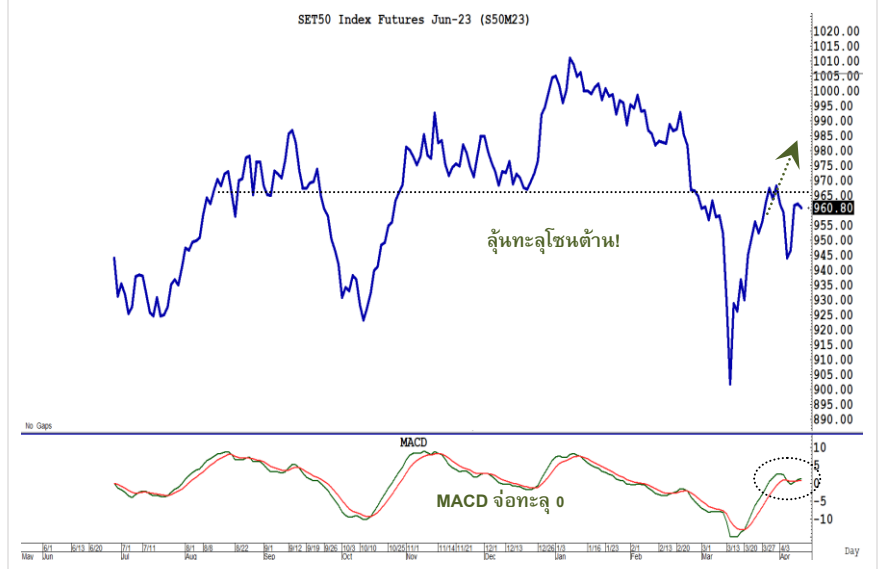
GFJ23: รับ 31,500 ต้าน 33,000

มุมมองทางเทคนิค โดย คุณธนรัตน์ อิศรกุล
นักวิเคราะห์การลงทุนปัจจัยพื้นฐานด้านหลักทรัพย์และปัจจัยทางเทคนิค

Thanarut@bualuang.co.th

Tel. (662) 618-1334

SET50 Index Future



ลู่ทะลุโซนต้าน!

MACD จ่อทะลุ 0

"แผนเดิมตั้งขาย.....แล้วรอรับกลับ"

Gold spot

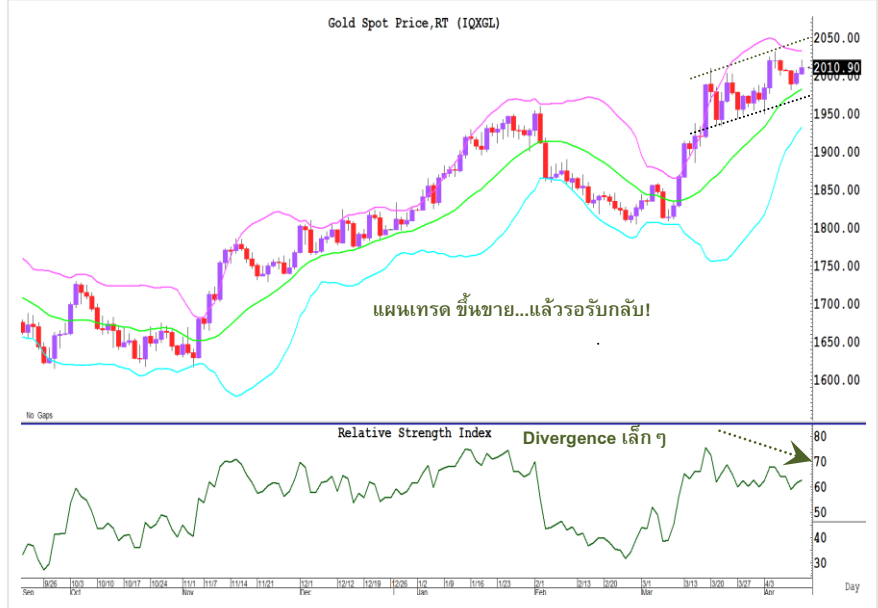
จับสัญญาณเทรต...ทองคำ

มุมมอง: ทองคำขยับเข้าใกล้จุด high ที่เคยทำไว้ที่ \$2030/ออนซ์ แล้วย่อ! ขณะที่ RSI! ส่งสัญญาณเตือน divergence เล็กๆ อย่างไรก็ตามโครงสร้างหลักยังมองเป็นทิศทางขาขึ้น

แผนเทรต...ตั้งขายก่อนแล้วรอรับกลับ โซนต้าน \$2,020-2,050/ออนซ์ รับ \$1,960-1,980/ออนซ์ ในทางตรงข้ามสถานะขายแนะนำรอสัญญาณกลับตัวบริเวณโซนต้าน

Note:เปิดความเสี่ยงหากผลตอบแทนติดลบมากกว่า 10% ของพอร์ต

Gold Spot



แผนเทรต ขึ้นขาย...แล้วรอรับกลับ!

Relative Strength Index Divergence เล็กๆ

วิกิจ ธรวรรณรัตน์

นักวิเคราะห์การลงทุนปัจจัยพื้นฐานด้านตลาดทุน/ปัจจัยทางเทคนิค

Wikij.tir@bualuang.co.th Tel. (662) 618-1336

หลักทรัพย์	เปิด	สูงสุด	ต่ำสุด	ปิด	เฉลี่ย	ราคาที่ใช้ชำระ ราคา	เปลี่ยนแปลง	ปริมาณ (สัญญา)	สถานะคงค้าง (สัญญา)
SET50	965.51	966.28	952.52	961.76	961.52	N/A	-3.75	N/A	N/A
S50J23	963.70	963.70	951	960.70	957.30	960.70	-2.7	26	209
S50K23	963	963.00	951.8	960.90	955.70	960.90	-0.1	38	231
S50M23	962.5	964.30	949.2	960.80	957.20	960.50	-1.8	201,294	399,984
S50U23	961.6	961.60	946.2	957.40	954.50	957.30	-2.1	18,954	42,445
S50Z23	960.6	960.90	946.2	957.30	953.90	957.10	-1.9	3,773	21,058
S50H24	956.8	956.80	942.8	953.50	950.70	953.30	-1.6	2,005	2,394
Total								226,090	466,321

Source : SET Smart

Trading by Investor Type - SET50 Index Futures

5 วันย้อนหลัง

วันที่	นักลงทุนต่างประเทศ ปริมาณ			นักลงทุนสถาบัน ปริมาณ			นักลงทุนภายในประเทศ ปริมาณ			รวม	
	ซื้อ	ขาย	สุทธิ	ซื้อ	ขาย	สุทธิ	ซื้อ	ขาย	สุทธิ	ปริมาณ	สถานะคงค้าง
12/04/2023	86,485	84,977	1,508	33,718	36,040	-2,322	105,887	105,073	814	226,090	466,321
11/04/2023	61,816	80,174	-18,358	25,054	19,994	5,060	62,921	49,623	13,298	149,791	467,245
10/04/2023	101,068	79,972	21,096	40,301	49,997	-9,696	99,317	110,717	-11,400	240,686	470,710
07/04/2023	54,091	42,704	11,387	26,339	29,038	-2,699	55,605	64,293	-8,688	136,035	467,532
05/04/2023	88,656	97,924	-9,268	42,998	39,022	3,976	110,361	105,069	5,292	242,015	476,773

4 เดือนย้อนหลัง

วันที่	นักลงทุนต่างประเทศ ปริมาณ			นักลงทุนสถาบัน ปริมาณ			นักลงทุนภายในประเทศ ปริมาณ			รวม	
	ซื้อ	ขาย	สุทธิ	ซื้อ	ขาย	สุทธิ	ซื้อ	ขาย	สุทธิ	ปริมาณ	สถานะคงค้าง
เม.ย. 2023	520,932	544,319	-23,387	239,553	234,232	5,321	605,804	587,738	18,066	1,366,289	466,321
มี.ค. 2023	3,051,754	2,935,366	116,388	1,110,804	1,094,251	16,553	2,675,691	2,808,632	-132,941	6,838,249	435,301
ก.พ. 2023	1,468,424	1,592,263	-123,839	668,550	650,734	17,816	2,019,686	1,913,663	106,023	4,156,660	664,829
ม.ค. 2023	1,346,543	1,446,322	-99,779	678,348	675,116	3,232	1,994,379	1,897,832	96,547	4,019,270	673,734

4 ไตรมาสย้อนหลัง

วันที่	นักลงทุนต่างประเทศ ปริมาณ			นักลงทุนสถาบัน ปริมาณ			นักลงทุนภายในประเทศ ปริมาณ			รวม	
	ซื้อ	ขาย	สุทธิ	ซื้อ	ขาย	สุทธิ	ซื้อ	ขาย	สุทธิ	ปริมาณ	สถานะคงค้าง
Q2/2023	520,932	544,319	-23,387	239,553	234,232	5,321	605,804	587,738	18,066	1,366,289	466,321
Q1/2023	5,866,721	5,973,951	-107,230	2,457,702	2,420,101	37,601	6,689,756	6,620,127	69,629	15,014,179	435,301
Q4/2022	5,773,579	5,666,820	106,759	2,433,982	2,462,801	-28,819	5,991,792	6,069,732	-77,940	14,199,353	563,223
Q3/2022	6,188,060	6,186,241	1,819	2,707,073	2,714,363	-7,290	6,950,031	6,944,560	5,471	15,845,164	495,136

Source : SET Smart

Metal Futures

หลักทรัพย์	เปิด	สูงสุด	ต่ำสุด	ปิด	เฉลี่ย	ราคาที่ใช้ชำระ ราคา	เปลี่ยนแปลง	ปริมาณ (สัญญา)	สถานะคงค้าง (สัญญา)
GF10J23	32,620	32,910	32,550	32,800	32,724	32,780.00	170	2129	3,850
GFJ23	32,690	32,870	32,670	32,720	32,721	32,720.00	120	74	240
GF10M23	32,710	32,990	32,640	32,880	32,806	32,860.00	150	1449	5,821
GFM23	32,730	32,950	32,730	32,830	32,815	32,820.00	120	22	244
GOM23	2,026	2,046	2,021	2,036	2,032	2,036.40	7.1	23288	19,150
SVFM23	25.19	25.60	25.12	25.33	25.47	25.33	0.06	203	887
GF10Q23	32,760	33,050	32,710	32,960	32,876	32,930.00	150	365	2,349
GFQ23	32,820	33,020	32,820	32,910	32,941	32,920.00	120	7	87
GOU23	2,054	2,074	2,048	2,064	2,059	2,064.10	7.6	4196	4,400
SVFU23	25.58	25.95	25.58	25.69	25.63	25.69	0.08	65	146

Source : SET Smart

Single Stock Futures

blssk	เปิด	สูงสุด	ต่ำสุด	ปิด	เฉลี่ย	ราคาที่ใช้ชำระ ราคา	เปลี่ยนแปลง	ปริมาณ (สัญญา)	สถานะคงค้าง (สัญญา)
AAVM23	2.76	2.78	2.75	2.78	2.77	2.78	-0.01	1,090	69,279
ADVANCM23	213.5	213.50	211.63	212.50	212.28	212.50	-0.5	424	3,950
AEONTSM23	182.25	185.90	182.25	185.00	184.68	188.00	5.8	130	194
AMATAM23	22.55	22.90	22.55	22.90	22.83	22.90	0.07	9	852
AOTM23	72.18	72.18	71.94	71.94	72.06	72.18	-0.26	250	2,867
APM23	-	-	-	-	-	12.01	0.46	-	4,512
AWCM23	5.55	5.55	5.48	5.52	5.50	5.52	-0.06	94	7,725
BAM23	13.03	13.03	13	13.00	13.02	13.00	-0.3	2	593
BAMM23	13.3	13.40	13.25	13.40	13.33	13.38	-0.01	221	13,449
BANPUM23	10.1	10.10	9.8	9.90	9.92	9.92	-0.16	2,621	50,877
BAYM23	-	-	-	-	-	29.18	0.18	-	551
BBLM23	156.48	156.48	154.39	154.39	155.25	154.60	-0.8	215	2,544
BCHM23	20.89	21.00	20.89	21.00	20.95	21.00	0.05	878	17,496
BCPGM23	10.35	10.35	10.28	10.28	10.34	10.28	-0.02	306	6,480
BCPM23	31.81	32.12	31.81	32.12	32.08	32.12	0.09	208	5,320
BDM23	30.25	30.25	29.3	29.50	29.48	29.50	-1	259	1,534
BEAUTYM23	-	-	-	-	-	1.23	-	-	47,849
BECM23	8.78	8.78	8.43	8.52	8.51	8.50	-0.12	10	21,170
BEMM23	8.98	9.05	8.91	9.00	8.97	9.00	0.1	33	11,858
BGRIMM23	39.75	40.20	39.75	40.20	39.78	40.20	0.2	217	3,078
BHM23	235.9	236.00	233.5	233.50	235.12	233.50	0.5	109	519
BJCM23	37.21	37.21	37.21	37.21	37.21	37.23	0.03	102	2,470
BLAM23	27.47	28.49	27.47	28.45	27.95	28.45	0.98	114	8,377
BLANDM23	-	-	-	-	-	0.97	-0.02	500	88,171
BPPM23	14.98	15.08	14.98	15.08	15.03	14.71	-0.1	102	1,802
BTSM23	7.5	7.50	7.5	7.50	7.50	7.50	-0.03	3	13,319
CBGM23	87	87.00	85.19	85.40	86.07	85.45	-1.7	340	3,404
CENTELM23	55.2	55.43	54.75	55.43	55.25	55.43	0.42	12	1,613
CHGM23	3.61	3.64	3.61	3.64	3.62	3.64	0.01	13	4,239
CKM23	21	21.00	20.88	20.98	20.98	20.98	-0.05	218	1,342
CKPM23	4.03	4.03	4.03	4.03	4.03	4.03	-0.01	505	29,100
COM7M23	27.89	27.89	26.74	26.74	27.14	26.76	-0.99	751	8,603
CPALLM23	61.51	61.98	61.11	61.90	61.43	61.85	0.25	561	4,811
CPFM23	20.73	20.83	20.35	20.77	20.47	20.69	-0.16	1,402	24,336
CPNM23	69.35	69.35	69.35	69.35	69.35	69.35	-0.05	64	542
CRCM23	-	-	-	-	-	44.57	-0.11	100	1,415
DELTAM23	965	965.00	911.11	946.10	934.59	947.37	-13.63	448	1,174
DTACM23X	-	-	-	-	-	8.23	-	-	179
EAM23	76.75	77.50	76.69	77.00	77.00	77.00	0.95	740	21,218
EASTWM23	-	-	-	-	-	4.97	0.04	-	10
EGCOM23	159.9	160.94	159.9	160.93	160.20	160.93	2.5	9	560
EPGM23	-	-	-	-	-	7.91	-	-	4,000
ERWM23	-	-	-	-	-	4.96	0.07	-	3,537
ESSOM23	-	-	-	-	-	8.66	0.01	-	24,122
GFPTM23	-	-	-	-	-	11.50	-0.15	-	5,240
GLOBALM23X	17.75	17.75	17.75	17.75	17.75	17.75	-	505	2,738
GPSCM23	68	68.25	68	68.25	68.13	68.25	0.1	82	4,685
GULFM23	53.94	54.00	53.94	54.00	54.00	54.01	0.06	995	13,344
GUNKULM23	3.99	3.99	3.95	3.99	3.98	3.99	-	5,042	127,446
HANAM23	49.5	49.87	49	49.00	49.46	49.01	-0.99	12	1,640
HMPROM23	14.07	14.07	14.07	14.07	14.07	14.07	-0.03	17	4,690
ICHIM23	-	-	-	-	-	12.62	-0.1	200	12,878
INTUCHM23X	-	-	-	-	-	73.77	-0.05	49	115
IRPCM23	2.58	2.61	2.58	2.61	2.58	2.60	0.02	557	33,242
ITDM23	1.63	1.63	1.62	1.63	1.63	1.63	0.03	56	31,689
IVLM23	33.6	33.74	33.1	33.73	33.39	33.72	-0.22	266	12,474
JASM23	1.96	2.00	1.96	1.97	1.98	1.97	-0.02	4	72,879

blssk	เปิด	สูงสุด	ต่ำสุด	ปิด	เฉลี่ย	ราคาที่ใช้ชำระ ราคา	เปลี่ยนแปลง	ปริมาณ (สัญญา)	สถานะคงค้าง (สัญญา)
JMTM23	43.5	43.87	42	43.75	42.74	42.77	-0.77	329	5,076
KBANKM23	132.5	133.75	130.5	132.60	132.41	132.60	0.64	2,411	8,399
KCEM23	45.25	45.64	45.01	45.64	45.20	45.40	0.04	55	5,447
KEXM23	16.71	16.71	16.61	16.61	16.62	16.61	-0.46	11	3,522
KKPM23	62.7	62.70	62.14	62.14	62.31	62.14	-0.44	111	3,420
KTBM23	16.71	16.71	16.5	16.68	16.59	16.68	-0.03	907	17,985
KTCM23	54.55	55.50	54.4	55.40	54.84	55.40	0.6	74	54,519
LHM23	-	-	-	-	-	9.76	-0.05	-	2,836
LPNM23	4.77	4.87	4.77	4.87	4.84	4.87	0.13	285	2,911
MAJORM23	16.1	16.10	16.1	16.10	16.10	16.10	0.07	2	4,594
MBKM23	-	-	-	-	-	15.80	-0.19	-	1,348
MEGAM23	-	-	-	-	-	43.07	-0.62	100	1,535
MINTM23	30.75	30.75	30.31	30.46	30.55	30.46	-0.54	16	2,289
MM23	50.15	50.15	50.15	50.15	50.15	50.15	-0.49	1	1,368
MTCM23	35.01	36.00	35	36.00	35.52	35.99	0.73	285	7,099
ORIM23	11.6	11.60	11.41	11.41	11.55	11.41	-0.48	504	4,129
ORM23	21.15	21.56	21.15	21.56	21.40	21.56	0.39	7	3,992
OSPM23	28.8	28.80	28.3	28.70	28.62	28.70	-0.85	878	2,425
PLANBM23	-	-	-	-	-	8.52	0.07	1,000	19,519
PRMM23	7.37	7.70	7.37	7.70	7.38	7.66	0.15	101	10,359
PSHM23	-	-	-	-	-	12.24	0.1	-	355
PSLM23	13.63	13.83	13.63	13.83	13.72	13.83	0.3	7	2,647
PTGM23	-	-	-	-	-	13.27	-0.33	-	17,576
PTTEPM23	161.54	162.92	161.5	161.75	162.20	161.75	1.75	1,505	3,019
PTTGCM23	44.18	44.18	43.66	43.97	43.89	43.97	-0.28	236	4,314
PTTM23	31.31	31.75	31.31	31.75	31.67	31.75	-	543	7,447
QHM23	2.36	2.44	2.36	2.42	2.36	2.38	-0.01	98	2,180
RATCHM23	38.7	38.70	38.7	38.70	38.70	39.05	0.5	102	1,309
RSM23	-	-	-	-	-	15.46	0.2	300	25,271
SAMARTM23	4.21	4.21	4.19	4.19	4.21	4.19	-0.03	6	6,886
SAWADM23	53.65	54.89	53.49	54.89	53.97	54.88	0.88	347	6,308
SCBM23	100.8	100.80	99.71	100.11	100.39	100.47	-0.33	3,770	6,283
SCCM23	312.1	316.00	312.1	316.00	314.27	316.00	2.8	95	1,984
SCGPM23	45.45	45.45	44.25	45.00	44.56	45.00	-0.15	334	4,010
SGPM23	8.7	8.70	8.7	8.70	8.70	8.70	-0.15	2	202
SIRIM23	1.78	1.79	1.78	1.79	1.78	1.80	-	3,024	22,858
SM23	-	-	-	-	-	1.74	0.02	1,000	20,422
SPALIM23	22.2	22.20	22.2	22.20	22.20	22.20	0.3	404	2,169
SPCGM23	-	-	-	-	-	13.27	-0.1	-	2
SPRCM23	-	-	-	-	-	10.51	-0.09	500	1,041
STAM23	21.55	21.55	21.55	21.55	21.55	21.55	0.2	2	2,109
STECM23	12.42	12.68	12.42	12.52	12.53	12.51	0.01	235	8,382
STGTM23	9.92	9.92	9.92	9.92	9.92	9.92	-0.16	402	3,784
STPIM23	-	-	-	-	-	4.04	0.06	-	20,420
SUPERM23	0.68	0.69	0.67	0.69	0.68	0.69	0.01	29	48,347
TASCOM23	19.26	19.52	19.26	19.52	19.35	19.52	0.07	3	1,800
TCAPM23	43.11	43.11	42.6	42.60	42.79	42.60	-0.75	207	222
THAIM23	-	-	-	-	-	3.36	-	-	-
THANIM23	-	-	-	-	-	3.78	-	-	4,522
THCOMM23	14.1	14.30	14.1	14.28	14.16	14.28	0.2	59	4,199
THGM23	-	-	-	-	-	69.07	-0.25	-	9
TISCOM23	92.7	92.70	92.7	92.70	92.70	92.70	0.2	3	246
TKNM23	9.36	9.41	9.36	9.41	9.40	9.37	-0.14	4	15,646
TOAM23	-	-	-	-	-	30.76	-0.25	-	603
TOPM23	52.35	52.87	52.35	52.87	52.78	52.87	0.47	206	1,043
TPIPLM23	-	-	-	-	-	1.54	-	-	4,224
TPIPPM23	-	-	-	-	-	3.30	-0.08	-	3,164
TQMM23	33	34.00	33	34.00	33.50	34.00	0.13	2	7,744

blssk	เปิด	สูงสุด	ต่ำสุด	ปิด	เฉลี่ย	ราคาที่ใช้ชำระ ราคา	เปลี่ยนแปลง	ปริมาณ (สัญญา)	สถานะคงค้าง (สัญญา)
TRUEEM23X	-	-	-	-	-	8.23	-	-	217
TRUEM23	8.19	8.20	8.1	8.20	8.16	8.20	-0.05	4,556	21,497
TTAM23	-	-	-	-	-	7.68	-0.02	-	1,841
TTBM23	1.38	1.40	1.37	1.40	1.39	1.40	0.02	909	15,818
TTCLM23	-	-	-	-	-	4.48	0.05	-	2,584
TTWM23	8.77	8.82	8.77	8.82	8.79	8.82	-0.05	2	587
TUM23	13.4	13.68	13.4	13.68	13.45	13.62	-0.01	107	21,663
TVOM23X	-	-	-	-	-	26.13	-0.25	-	400
UNIQM23	-	-	-	-	-	3.75	-	-	6,574
VGIM23	3.99	3.99	3.99	3.99	3.99	3.99	0.01	2	9,982
VNGM23	-	-	-	-	-	4.94	-	-	8,604
WHAM23	4.34	4.39	4.32	4.38	4.36	4.37	0.04	5,628	14,447
Total								54,081	1,383,928

Source : SET Smart

BUALUANG SECURITIES PUBLIC COMPANY LIMITED (BLS) is a subsidiary of BANGKOK BANK PUBLIC COMPANY LIMITED (BBL). This document is produced based upon sources believed to be reliable but their accuracy, completeness or correctness is not guaranteed. The statements or expressions of opinion herein were arrived at after due and careful consideration to use as information for investment. Expressions of opinion contained herein are subject to change without notice. This document is not, and should not be construed as, an offer or the solicitation of an offer to buy or sell any securities. The use of any information shall be at the sole discretion and risk of the user.

BUALUANG SECURITIES PUBLIC COMPANY LIMITED MAY BE IN RELATIONSHIP WITH THE SECURITIES IN THIS REPORT. "Opinions, projections and other information contained in this report are based upon sources believed to be accurate including the draft prospectus, but no responsibility is accepted for any loss occasioned by reliance placed upon the contents hereof. Bualuang Securities Public Company Limited may from time to time perform investment, advisory or other services for companies mentioned in this report, as well as dealing (as principal or otherwise) in, or otherwise being interested in, any securities mentioned herein, This report does not constitute a solicitation to buy or sell any securities". Investors should carefully read details in the prospectus before making investment decision.






BUALUANG SECURITIES PUBLIC COMPANY LIMITED MAY ACT AS MARKET MAKER AND ISSUER OF DWs, AND ISSUER OF STRUCTURED NOTES ON THESE SECURITIES. The company may prepare the research reports on those underlying securities. Investors should carefully read the details of the derivative warrants and structured notes in the prospectus before making investment decisions.

ADVANC	AMATA	AOT	BDMS	BH	CBG	CENTEL	CPALL	GLOBAL	GPSC	IRPC	KBANK	KCE	KTC	MINT
PTG	PTT	PTTEP	PTTGC	SCB	SPRC	TOP	WHA	ESSO	STA	BGRIM	GULF	MTC	AWC	CRC
CPF	CPN	HANA	HMPRO	IVL	OSP	SAWAD	BANPU	BCH	BTS	SCC	TISCO	TU	INTUCH	RATCH
VGI	SCGP	COM7	DOHOME	JMT	CHG	TTB	BAM	BCP	AP	KTB	KKP	OR	BEM	GUNKUL
EA	SPALI	RBF	STGT	JMART	BEC	BLA	KEX	RCL	SINGER	STARK	TIDLOR	FORTH	TIFH	AAV
DELTA	BCPG	SABUY	THG	CKP	TRUE	PSL	SIRI							

BUALUANG SECURITIES PUBLIC COMPANY LIMITED IS OR MAY BE AN UNDERWRITER/CO-UNDERWRITER/JOINT LEAD IN RESPECT OF THE INITIAL PUBLIC OFFERING (IPO) OF SECURITIES.

Financial Advisor	Lead underwriter/ Underwriter/ Co-underwriter
	MGC

CG Rating

Score Range	Score Range	Description
90 – 100		Excellent
80 – 89		Very Good
70 – 79		Good
60 – 69		Satisfactory
50 – 00359		Pass
Less than 50	No logo given	-

Thailand's Private Sector Collective Action Coalition Against Corruption programme (Thai CAC) under Thai Institute of Directors

- companies that have **declared** their intention to join CAC, and
- companies **certified** by CAC.

CORPORATE GOVERNANCE REPORT DISCLAIMER

This research report was prepared by Bualuang Securities Public Company Limited and refers to research prepared by Morgan Stanley. Morgan Stanley does not warrant or guarantee the accuracy or completeness of its research reports. Morgan Stanley reserves copyright and other proprietary rights in the material reproduced in this report. Morgan Stanley is under no obligation to inform Bualuang Securities or you if the views or information referred to or reproduced in this research report change.

Corporate Governance Report disclaimer

The disclosure of the survey result of the Thai Institute of Directors Association (IOD) regarding corporate governance is made pursuant to the policy of the Office of the Securities and Exchange Commission. The IOD survey is based on the information of a company listed on the Stock Exchange of Thailand and the Market for Alternative Investment disclosed to the public and able to be accessed by a general public investor. The result, therefore, is from the perspective of a third party. It is not an evaluation of operation and is not based on inside information.

The survey result is as of the date appearing in the Corporate Governance Report of Thai Listed Companies. As a result, the survey result may be changed after that date. Bualuang Securities Public Company Limited neither confirms nor certifies the accuracy of such survey results.

“Disclaimer: The disclosure of the Anti-Corruption Progress Indicators of a listed company on the Stock Exchange of Thailand, which is assessed by the relevant institution as disclosed by the Office of the Securities and Exchange Commission, is made in order to comply with the policy and sustainable development plan for the listed companies. The relevant institution made this assessment based on the information received from the listed company, as stipulated in the form for the assessment of Anti-corruption which refers to the Annual Registration Statement (Form 56-1), Annual Report (Form 56-2), or other relevant documents or reports of such listed company. The assessment result is therefore made from the perspective of a third party. It is not an assessment of operation and is not based on any inside information. Since this assessment is only the assessment result as of the date appearing in the assessment result, it may be changed after that date or when there is any change to the relevant information. Nevertheless, Bualuang Securities Public Company Limited neither confirms, verifies, nor certifies the accuracy and completeness of the assessment result.”

BUALUANG RESEARCH – RECOMMENDATION FRAMEWORK

STOCK RECOMMENDATIONS

BUY: Expected positive total returns of 15% or more over the next 12 months.

HOLD: Expected total returns of between -15% and +15% over the next 12 months.

SELL: Expected negative total returns of 15% or more over the next 12 months.

TRADING BUY: Expected positive total returns of 15% or more over the next 3 months.

SECTOR RECOMMENDATIONS

OVERWEIGHT: The industry, as defined by the analyst's coverage universe, is expected to outperform the relevant primary market index over the next 12 months.

NEUTRAL: The industry, as defined by the analyst's coverage universe, is expected to perform in line with the relevant primary market index over the next 12 months.

UNDERWEIGHT: The industry, as defined by the analyst's coverage universe, is expected to underperform the relevant primary market index over the next 12 months.

IMPORTANT DISCLOSURES FOR U.S. PERSONS

This research report was prepared by Bualuang Securities Public Company Limited (“BLS”). BLS is not a registered broker-dealer in the United States and, therefore, is not subject to U.S. rules regarding the preparation of research reports and the independence of research analysts. This research report is provided for distribution to “major U.S. institutional investors” in reliance on the exemption from registration provided by Rule 15a-6 of the U.S. Securities Exchange Act of 1934, as amended (the “Exchange Act”).

Under no circumstances should any recipient of this research report effect any transaction to buy or sell securities or related financial instruments through BLS. Rosenblatt Securities Inc. accepts responsibility for the contents of this research report, subject to the terms set out below, to the extent that it is delivered to a U.S. person other than a major U.S. institutional investor.

The analyst whose name appears in this research report is not registered or qualified as a research analyst with the Financial Industry Regulatory Authority (“FINRA”) and may not be an associated person of Rosenblatt Securities Inc. and, therefore, may not be subject to applicable restrictions under FINRA Rules on communications with a subject company, public appearances and trading securities held by a research analyst account.

Additional Disclosures

This research report is for distribution only under such circumstances as may be permitted by applicable law. This research report has no regard to the specific investment objectives, financial situation or particular needs of any specific recipient, even if sent only to a single recipient. This research report is not guaranteed to be a complete statement or summary of any securities, markets, reports or developments referred to in this research report. Neither BLS nor any of its directors, officers, employees or agents shall have any liability, however arising, for any error, inaccuracy or incompleteness of fact or opinion in this research report or lack of care in this research report’s preparation or publication, or any losses or damages which may arise from the use of this research report.

BLS may rely on information barriers, such as “Chinese Walls” to control the flow of information within the areas, units, divisions, groups, or affiliates of BLS.

Investing in any non-U.S. securities or related financial instruments (including ADRs) discussed in this research report may present certain risks. The securities of non-U.S. issuers may not be registered with, or be subject to the regulations of, the U.S. Securities and Exchange Commission. Information on such non-U.S. securities or related financial instruments may be limited. Foreign companies may not be subject to audit and reporting standards and regulatory requirements comparable to those in effect within the United States.

The value of any investment or income from any securities or related financial instruments discussed in this research report denominated in a currency other than U.S. dollars is subject to exchange rate fluctuations that may have a positive or adverse effect on the value of or income from such securities or related financial instruments.

Past performance is not necessarily a guide to future performance and no representation or warranty, express or implied, is made by BLS with respect to future performance. Income from investments may fluctuate. The price or value of the investments to which this research report relates, either directly or indirectly, may fall or rise against the interest of investors. Any recommendation or opinion contained in this research report may become outdated as a consequence of changes in the environment in which the issuer of the securities under analysis operates, in addition to changes in the estimates and forecasts, assumptions and valuation methodology used herein.

No part of the content of this research report may be copied, forwarded or duplicated in any form or by any means without the prior consent of BLS and BLS accepts no liability whatsoever for the actions of third parties in this respect.