

# TFEX Daily

19 พฤษภาคม 2566

## S50M23

แผนเทรด.....รีบาวด์ขึ้น “ขาย”

Gold spot

ถูกทาง แนะนำ “ Short” run trend

“ขาดลง...ลงสู่กรอบล่าง -2SD”

## S50M23

“ปรับฐานลงสู่กรอบล่าง.....-2SD

มุมมอง: ดัชนีรีบาวด์ แต่ยังไม่ฟื้นตัวได้ไกล เนื่องจากติดโครงสร้างขาดลง แต่ล่าสุดเริ่มรีบาวด์ขึ้นได้บ้างภายหลังปรับลงมาสู่บริเวณกรอบล่าง -2SD บริเวณ 920 จุดแล้วตีคกลับ

แผนเทรด.....สถานะขายแนะนำรอจังหวะรีบาวด์ขึ้นขายโซนด้านบนบริเวณ 930 จุด ในทางตรงข้ามสถานะซื้อ แนะนำยังไม่รับ

เงื่อนไขขาดทางกรณีขาดทุนมากกว่า 10% แนะนำปิดสถานะ

“หลุดเส้น EMA.....แนะนำรอโซนรับถัดไป”

## Gold spot

จับสัญญาณเทรด...ทองคำ

มุมมอง: ทองคำลงต่ำกว่า \$2,000/ออนซ์ หลุด เส้น EMA 25 วัน ส่งผลให้แนวโน้มอาจเปลี่ยนโครงสร้างเป็นขาดลง นอกจากนี้ RSI ปรับลง หลุด low บ่งชี้ความอ่อนแรงด้านราคา

แผนเทรด.....สถานะ Long แนะนำ ยังไม่รับ ในทางตรงกันข้ามสถานะขายถูกทาง แนะนำสถานะ “Short” run trend

Note: กรณีผลตอบแทนติดลบมากกว่า 10% ของพอร์ตแนะนำให้ปิดสถานะ

## วิกิจ ถาวรรัตน์

นักวิเคราะห์การลงทุนปัจจัยพื้นฐานด้านตลาดทุน/ปัจจัยทางเทคนิค

Wikij.tir@bualuang.co.th Tel. (662) 618-1336

S50M23: รับ 916 ต้าน 930

GFM23: รับ 31,500 ต้าน 33,000

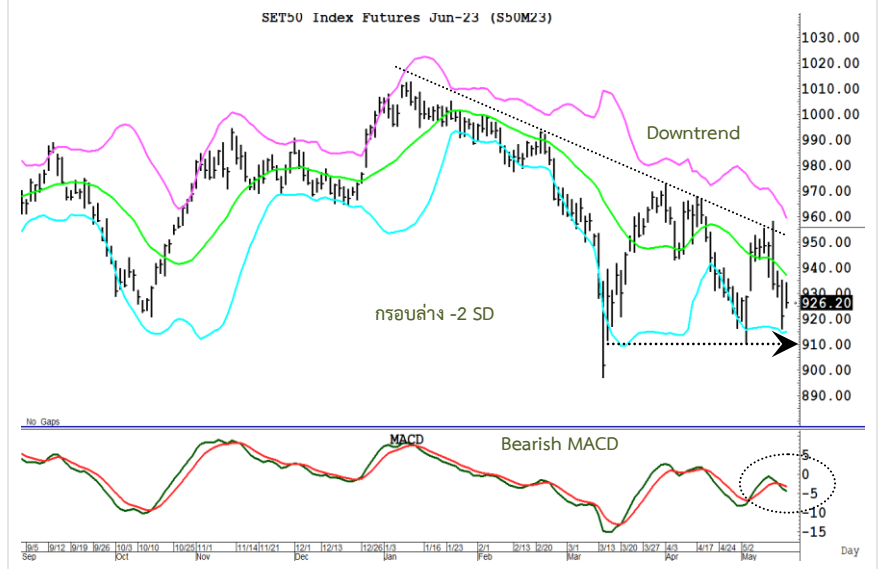
มุมมองทางเทคนิค โดย คุณธนรัตน์ อิศรกุล

นักวิเคราะห์การลงทุนปัจจัยพื้นฐานด้านหลักทรัพย์และปัจจัยทางเทคนิค

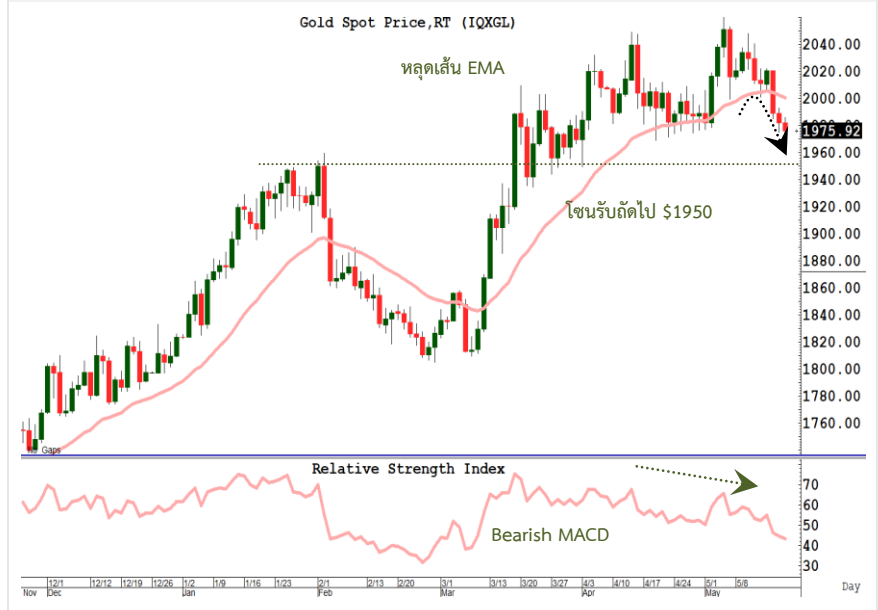
Thanarut@bualuang.co.th

Tel. (662) 618-1334

SET50 Index Future



Gold Spot



หลักทรัพย์	เปิด	สูงสุด	ต่ำสุด	ปิด	เฉลี่ย	ราคาที่ใช้ชำระ ราคา	เปลี่ยนแปลง	ปริมาณ (สัญญา)	สถานะคงค้าง (สัญญา)
SET50	928.07	936.59	925.91	925.91	929.12	N/A	2.98	N/A	N/A
S50K23	929.80	932.00	927.1	927.10	930.60	927.10	3.1	8	217
S50M23	924.5	934.10	924.2	926.80	929.20	926.20	5.3	239,366	509,641
S50N23	926	927.00	926	926.10	926.60	926.10	8.1	7	102
S50U23	922.6	931.00	922.2	923.80	926.60	923.50	5.1	24,084	70,554
S50Z23	923	930.80	923	924.30	926.40	924.10	5.5	5,371	30,717
S50H24	921	928.20	921	922.10	924.50	922.10	5.7	2,428	6,966
<b>Total</b>								<b>271,264</b>	<b>618,197</b>

Source : SET Smart

#### Trading by Investor Type - SET50 Index Futures

##### 5 วันย้อนหลัง

วันที่	นักลงทุนต่างประเทศ ปริมาณ			นักลงทุนสถาบัน ปริมาณ			นักลงทุนภายในประเทศ ปริมาณ			รวม	
	ซื้อ	ขาย	สุทธิ	ซื้อ	ขาย	สุทธิ	ซื้อ	ขาย	สุทธิ	ปริมาณ	สถานะคงค้าง
18/05/2023	102,056	66,499	35,557	37,626	45,693	-8,067	131,582	159,072	-27,490	271,264	618,197
17/05/2023	94,207	104,804	-10,597	40,816	43,950	-3,134	156,748	143,017	13,731	291,771	634,121
16/05/2023	94,608	79,860	14,748	30,851	32,216	-1,365	95,736	109,119	-13,383	221,195	620,776
15/05/2023	108,930	141,468	-32,538	67,120	53,710	13,410	231,681	212,553	19,128	407,731	663,605
12/05/2023	76,268	104,173	-27,905	50,177	49,917	260	172,131	144,486	27,645	298,576	616,968

##### 4 เดือนย้อนหลัง

วันที่	นักลงทุนต่างประเทศ ปริมาณ			นักลงทุนสถาบัน ปริมาณ			นักลงทุนภายในประเทศ ปริมาณ			รวม	
	ซื้อ	ขาย	สุทธิ	ซื้อ	ขาย	สุทธิ	ซื้อ	ขาย	สุทธิ	ปริมาณ	สถานะคงค้าง
พ.ค. 2023	1,008,716	1,014,259	-5,543	479,196	463,608	15,588	1,423,864	1,433,909	-10,045	2,911,776	618,197
เม.ย. 2023	1,347,692	1,425,906	-78,214	617,464	617,425	39	1,616,874	1,538,699	78,175	3,582,030	500,644
มี.ค. 2023	3,051,754	2,935,366	116,388	1,110,804	1,094,251	16,553	2,675,691	2,808,632	-132,941	6,838,249	435,301
ก.พ. 2023	1,468,424	1,592,263	-123,839	668,550	650,734	17,816	2,019,686	1,913,663	106,023	4,156,660	664,829

##### 4 ไตรมาสย้อนหลัง

วันที่	นักลงทุนต่างประเทศ ปริมาณ			นักลงทุนสถาบัน ปริมาณ			นักลงทุนภายในประเทศ ปริมาณ			รวม	
	ซื้อ	ขาย	สุทธิ	ซื้อ	ขาย	สุทธิ	ซื้อ	ขาย	สุทธิ	ปริมาณ	สถานะคงค้าง
Q2/2023	2,356,408	2,440,165	-83,757	1,096,660	1,081,033	15,627	3,040,738	2,972,608	68,130	6,493,806	618,197
Q1/2023	5,866,721	5,973,951	-107,230	2,457,702	2,420,101	37,601	6,689,756	6,620,127	69,629	15,014,179	435,301
Q4/2022	5,773,579	5,666,820	106,759	2,433,982	2,462,801	-28,819	5,991,792	6,069,732	-77,940	14,199,353	563,223
Q3/2022	6,188,060	6,186,241	1,819	2,707,073	2,714,363	-7,290	6,950,031	6,944,560	5,471	15,845,164	495,136

Source : SET Smart

#### Metal Futures

หลักทรัพย์	เปิด	สูงสุด	ต่ำสุด	ปิด	เฉลี่ย	ราคาที่ใช้ชำระ ราคา	เปลี่ยนแปลง	ปริมาณ (สัญญา)	สถานะคงค้าง (สัญญา)
GF10M23	32,430	32,450	32,220	32,350	32,336	32,350.00	-20	1862	6,063
GFM23	32,370	32,410	32,250	32,250	32,309	32,300.00	-80	10	258
GOM23	2,003	2,004	1,986	1,992	1,996	1,991.90	-7.9	24919	39,454
SVFM23	24	24	24	24	24	23.71	-0.16	88	1,156
GF10Q23	32,510	32,530	32,340	32,440	32,446	32,440.00	-40	487	3,592
GFQ23	32,490.00	32,490.00	32,490.00	32,490.00	32,490.00	32,490.00	-	2	154
GOU23	2,033	2,033	2,017	2,021	2,025	2,021.20	-8.7	6472	12,232
SVFU23	24	24	24	24	24	23.95	-0.16	91	334
GF10V23	32,580	32,620	32,450	32,540	32,531	32,540.00	-30	100	617
GFV23	32,450.00	32,450.00	32,450.00	32,450.00	32,450.00	32,450.00	-140	5	16

Source : SET Smart

#### Single Stock Futures

blssk	เปิด	สูงสุด	ต่ำสุด	ปิด	เฉลี่ย	ราคาที่ใช้ชำระ ราคา	เปลี่ยนแปลง	ปริมาณ (สัญญา)	สถานะคงค้าง (สัญญา)
AAVM23	2.79	2.79	2.72	2.72	2.73	2.72	-0.03	1,524	45,319
ADVANCM23	214	214.00	211.06	211.99	212.61	211.99	-3.26	524	2,890
AEONTSM23	197.91	201.00	197.91	200.79	198.95	200.79	3.29	79	245
AMATAM23	21.55	21.65	21.55	21.65	21.60	21.65	0.15	202	1,043
AOTM23	72.1	72.34	71.63	71.63	71.82	71.64	-0.17	1,100	2,428
APM23	10.58	10.58	10.43	10.54	10.53	10.54	-0.16	5	531
AWCM23	5.32	5.34	5.29	5.29	5.32	5.29	0.02	3	7,706
BAM23	14.07	14.07	14.07	14.07	14.07	14.07	0.35	1	1,068
BAMM23	11.48	11.80	11.12	11.36	11.31	11.28	-0.06	218	13,829
BANPUM23	8.24	8.26	8.02	8.02	8.12	8.02	-0.1	296	49,714
BAYM23	28.7	28.70	28.7	28.70	28.70	28.60	0.35	1	507
BBLM23	161.9	161.90	161	161.00	161.28	161.00	1.5	180	1,445
BCHM23	17.85	17.85	17.7	17.70	17.75	17.70	-0.05	503	10,013
BCPGM23	9.02	9.02	9.02	9.02	9.02	9.02	-0.11	1	6,566
BCPM23	31.19	31.19	31.19	31.19	31.19	31.19	0.29	102	4,514
BDM23	28.57	28.96	28.01	28.50	28.59	28.50	-0.32	15	1,798
BEAUTYM23	1.16	1.16	1.11	1.13	1.12	1.12	-0.03	7,574	34,613
BECM23	8.32	8.55	8.32	8.47	8.48	8.47	0.4	211	1,381
BEMM23	8.58	8.60	8.3	8.40	8.47	8.40	-0.2	525	12,421
BGRIMM23	37.5	37.50	37.5	37.50	37.50	37.50	0.28	201	2,925
BHM23	240.55	241.50	233.01	237.30	236.49	237.30	-1.65	260	1,314
BJCM23	37.5	37.50	37.5	37.50	37.50	37.50	-0.49	3	971
BLAM23	25.44	25.94	25.44	25.94	25.75	25.94	0.65	5	8,662
BLANDM23	0.92	0.92	0.92	0.92	0.92	0.92	-	901	78,506
BPPM23	13.78	13.78	13.78	13.78	13.78	13.55	-0.1	1,001	1,495
BTSM23	7.45	7.45	7.35	7.40	7.40	7.40	-0.15	5	10,210
CBGM23	71.25	71.47	67.01	67.45	69.06	67.40	-3.48	977	4,810
CENTELM23	49.75	50.48	49.5	50.00	50.08	50.00	1.03	319	993
CHGM23	3.12	3.13	3.1	3.13	3.12	3.13	-	1,079	1,785
CKM23	20.23	20.23	20.12	20.23	20.13	20.22	0.09	323	1,016
CKPM23	3.78	3.81	3.76	3.76	3.77	3.76	0.04	15	28,360
COM7M23	27.6	28.00	27.5	27.75	27.63	27.70	0.36	353	4,738
CPALLM23	63.32	63.36	62.19	62.35	62.87	62.35	-0.85	813	3,539
CPFM23	19.7	19.70	19.55	19.68	19.63	19.68	0.06	512	23,189
CPNM23	68.08	68.08	67.1	67.25	67.57	67.78	-0.05	165	937
CRCM23	43.38	43.38	43.02	43.02	43.17	43.02	-0.48	405	1,837
DELTAM23X	81.04	89.44	81.04	87.50	86.38	87.50	6.78	308	1,408
DTACM23X	7.05	7.18	6.62	6.62	6.88	6.66	-0.26	21	89
EAM23	65.75	66.95	64.7	64.90	65.65	64.90	-0.85	246	22,387
EASTWM23	-	-	-	-	-	4.95	-	-	10
EGCOM23	144.93	144.93	144.93	144.93	144.93	144.93	-0.65	41	546
EPGM23	-	-	-	-	-	7.38	-0.06	-	3,507
ERWM23	4.24	4.24	4.2	4.20	4.24	4.21	0.07	2,012	4,070
ESSOM23	9.02	9.02	8.86	8.86	8.87	8.86	-0.08	147	10,656
GFPTM23	-	-	-	-	-	11.00	-0.1	-	2,812
GLOBALM23X	18.3	18.80	18.3	18.80	18.65	18.91	0.8	505	1,102
GPSCM23	60.12	60.15	59.48	59.50	59.96	59.50	-	122	4,717
GULFM23	48.56	48.64	48	48.23	48.36	48.19	0.19	2,496	9,906
GUNKULM23	3.51	3.52	3.28	3.34	3.42	3.34	-0.16	4,255	135,323
HANAM23	37.14	38.70	37.14	38.00	38.03	38.00	1.63	267	1,023
HMPROM23	14.35	14.35	14.35	14.35	14.35	14.35	-	10	3,698
ICHIM23	13.7	13.70	13.31	13.31	13.62	13.31	0.36	205	7,733
INTUCHM23X	-	-	-	-	-	72.12	-1.79	20	161
IRPCM23	2.35	2.35	2.29	2.30	2.33	2.30	0.01	141	21,999
ITDM23	1.42	1.44	1.41	1.42	1.44	1.40	-	84	10,907
IVLM23	33.35	33.35	32.01	32.94	32.76	32.94	0.04	44	10,044
JASM23	1.44	1.46	1.43	1.43	1.46	1.43	-0.01	117	43,501

blssk	เปิด	สูง สุด	ต่ำ สุด	ปิด	เฉลี่ย	ราคาที่ใช้ชำระ ราคา	เปลี่ยนแปลง	ปริมาณ (สัญญา)	สถานะคงค้าง (สัญญา)
JMTM23	41.96	42.50	41.7	42.21	42.05	42.21	0.01	621	4,596
KBANKM23	134.5	135.20	134.25	134.50	134.73	134.43	0.72	662	4,666
KCEM23	36.75	37.75	36.75	37.50	37.32	37.33	1.18	367	5,012
KEXM23	10.5	10.50	10.18	10.18	10.29	10.18	-0.05	19	3,486
KKPM23	-	-	-	-	-	62.26	-0.24	90	2,134
KTBM23	18.85	18.90	18.75	18.80	18.87	18.80	0.05	127	7,340
KTCM23	-	-	-	-	-	54.99	-	180	668
LHM23	8.6	8.65	8.6	8.65	8.60	8.65	0.05	11	2,875
LPNM23	4.3	4.38	4.3	4.38	4.33	4.38	0.02	6	3,077
MAJORM23	14.5	14.50	14.08	14.30	14.19	14.30	-0.1	200	4,203
MBKM23	-	-	-	-	-	15.24	-0.01	-	756
MEGAM23	38.75	38.75	38.75	38.75	38.75	38.75	-	301	917
MINTM23	32.46	33.00	32.46	33.00	32.78	32.75	1.04	633	1,517
MM23	-	-	-	-	-	51.45	-	-	705
MTCM23	39.23	39.56	39	39.06	39.21	39.06	0.68	313	4,763
ORIM23	10.43	10.43	10.3	10.30	10.34	10.50	0.06	506	3,586
ORM23	22.66	22.66	22.25	22.25	22.53	22.25	-0.15	16	2,832
OSPM23	-	-	-	-	-	30.47	-	-	1,550
PLANBM23	8.72	8.72	8.72	8.72	8.72	8.72	0.07	2	15,545
PRMM23	6.32	6.37	6.32	6.37	6.34	6.37	0.15	4	3,320
PSHM23	-	-	-	-	-	12.42	-0.03	-	348
PSLM23	10.5	10.75	10.5	10.65	10.65	10.65	-0.16	29	3,088
PTGM23	13.17	13.17	12.21	12.37	12.59	12.37	-0.98	6,411	9,802
PTTEPM23	147	149.78	147	149.00	148.96	149.00	4	952	4,443
PTTGCM23	37.6	38.01	36.35	36.89	37.61	36.89	-0.39	213	3,946
PTTM23	32.1	32.10	31.75	31.75	31.91	31.75	0.03	236	4,451
QHM23	2.25	2.25	2.25	2.25	2.25	2.25	-0.04	1	2,117
RATCHM23	36.75	36.75	36.5	36.50	36.53	36.50	-0.65	9	1,333
RSM23X	-	-	-	-	-	14.63	0.2	-	23,379
SAMARTM23	4.72	4.87	4.72	4.80	4.78	4.80	-	16	6,280
SAWADM23	52.82	53.74	52.57	52.60	53.13	52.60	-0.14	978	6,380
SCBM23	104	104.00	103.5	103.50	103.68	103.61	1.06	1,926	2,734
SCCM23	341.99	341.99	337	337.50	339.24	337.50	-1.5	232	1,653
SCGPM23	44.03	44.03	43.25	43.99	43.76	43.62	-0.61	23	3,669
SGPM23	-	-	-	-	-	8.72	-	-	202
SIRIM23	1.77	1.80	1.76	1.78	1.78	1.77	-	1,133	40,021
SM23	-	-	-	-	-	1.59	0.01	500	21,614
SPALIM23	-	-	-	-	-	20.18	-0.72	-	1,810
SPCGM23	-	-	-	-	-	12.73	-0.2	-	2
SPRCM23	8.3	8.30	8.3	8.30	8.30	8.30	-	1	511
STAM23	18.8	18.89	18.8	18.89	18.87	18.89	0.09	106	2,024
STECM23	10	10.03	9.33	9.50	9.53	9.50	-0.44	582	3,936
STGTM23	9.15	9.15	9.15	9.15	9.15	9.15	-	352	3,139
STPIM23	3.76	3.76	3.73	3.73	3.73	3.73	-0.04	750	20,029
SUPERM23	0.59	0.59	0.59	0.59	0.59	0.59	-0.01	1	40,449
TASCOM23	19.76	19.76	19.76	19.76	19.76	19.60	0.23	402	1,489
TCAPM23	48.4	48.75	48.4	48.75	48.72	48.75	0.55	13	239
THAIM23	-	-	-	-	-	3.36	-	-	-
THANIM23	-	-	-	-	-	3.53	-0.04	-	2,520
THCOMM23	12	12.00	11.6	11.70	11.77	11.70	-0.38	17	1,734
THGM23	-	-	-	-	-	68.30	-	-	28
TISCOM23	94.6	95.00	94.6	95.00	94.83	95.00	1.69	31	235
TKNM23	11.15	11.34	11.06	11.34	11.12	11.34	0.19	129	12,071
TOAM23	-	-	-	-	-	30.01	-0.07	200	406
TOPM23	45.67	46.09	44.61	46.09	45.62	45.53	0.03	327	2,074
TPIPLM23	-	-	-	-	-	1.48	-0.01	-	2,734
TPIPPM23	-	-	-	-	-	3.32	-0.04	-	4,173
TQMM23	-	-	-	-	-	27.93	-0.41	-	2,171

blssk	เปิด	สูงสุด	ต่ำสุด	ปิด	เฉลี่ย	ราคาที่ใช้ชำระ ราคา	เปลี่ยนแปลง	ปริมาณ (สัญญา)	สถานะคงค้าง (สัญญา)
TRUEEM23X	-	-	-	-	-	6.66	-0.31	-	215
TRUEM23	7.05	7.05	6.6	6.60	6.81	6.60	-0.35	3,616	19,241
TTAM23	6.88	7.00	6.88	7.00	6.94	7.00	0.22	2	1,378
TTBM23	1.47	1.48	1.46	1.47	1.47	1.47	0.01	2,325	19,246
TTCLM23	3.95	4.03	3.95	4.01	4.01	4.01	0.12	16	2,789
TTWM23	-	-	-	-	-	8.50	-0.02	-	401
TUM23	14.99	14.99	14.89	14.99	14.93	14.99	0.17	3,512	11,141
TVOM23X	-	-	-	-	-	25.69	-	-	300
UNIQM23	-	-	-	-	-	3.49	-0.06	-	6,609
VGIM23	3.22	3.35	3.18	3.18	3.28	3.18	-0.01	610	7,119
VNGM23	3.83	3.83	3.83	3.83	3.83	3.83	-0.02	7	7,575
WHAM23	4.21	4.25	4.16	4.16	4.21	4.16	-0.01	1,658	10,168
<b>Total</b>								<b>64,316</b>	<b>1,072,845</b>

Source : SET Smart

BUALUANG SECURITIES PUBLIC COMPANY LIMITED (BLS) is a subsidiary of BANGKOK BANK PUBLIC COMPANY LIMITED (BBL). This document is produced based upon sources believed to be reliable but their accuracy, completeness or correctness is not guaranteed. The statements or expressions of opinion herein were arrived at after due and careful consideration to use as information for investment. Expressions of opinion contained herein are subject to change without notice. This document is not, and should not be construed as, an offer or the solicitation of an offer to buy or sell any securities. The use of any information shall be at the sole discretion and risk of the user.

BUALUANG SECURITIES PUBLIC COMPANY LIMITED MAY BE IN RELATIONSHIP WITH THE SECURITIES IN THIS REPORT. "Opinions, projections and other information contained in this report are based upon sources believed to be accurate including the draft prospectus, but no responsibility is accepted for any loss occasioned by reliance placed upon the contents hereof. Bualuang Securities Public Company Limited may from time to time perform investment, advisory or other services for companies mentioned in this report, as well as dealing (as principal or otherwise) in, or otherwise being interested in, any securities mentioned herein, This report does not constitute a solicitation to buy or sell any securities". Investors should carefully read details in the prospectus before making investment decision.






BUALUANG SECURITIES PUBLIC COMPANY LIMITED MAY ACT AS MARKET MAKER AND ISSUER OF DWs, AND ISSUER OF STRUCTURED NOTES ON THESE SECURITIES. The company may prepare the research reports on those underlying securities. Investors should carefully read the details of the derivative warrants and structured notes in the prospectus before making investment decisions.

ADVANC	AMATA	AOT	BDMS	BH	CBG	CENTEL	CPALL	GLOBAL	GPSC	IRPC	KBANK	KCE	KTC	MINT
PTG	PTT	PTTEP	PTTGC	SCB	SPRC	TOP	WHA	ESSO	STA	BGRIM	GULF	MTC	AWC	CRC
CPF	CPN	HANA	HMPRO	IVL	OSP	SAWAD	BANPU	BCH	BTS	SCC	TISCO	TU	INTUCH	RATCH
VGI	SCGP	COM7	DOHOME	JMT	CHG	TTB	BAM	BCP	AP	KTB	KKP	OR	BEM	GUNKUL
EA	SPALI	RBF	STGT	JMART	BEC	BLA	KEX	RCL	SINGER	STARK	TIDLOR	FORTH	TIPH	AAV
DELTA	BCPG	SABUY	THG	CKP	TRUE	PSL	SIRI							

BUALUANG SECURITIES PUBLIC COMPANY LIMITED IS OR MAY BE AN UNDERWRITER/CO-UNDERWRITER/JOINT LEAD IN RESPECT OF THE INITIAL PUBLIC OFFERING (IPO) OF SECURITIES.

Financial Advisor	Lead underwriter/ Underwriter/ Co-underwriter
	MGC

**CG Rating**

Score Range	Score Range	Description
90 – 100		Excellent
80 – 89		Very Good
70 – 79		Good
60 – 69		Satisfactory
50 – 00359		Pass
Less than 50	No logo given	-

**Thailand's Private Sector Collective Action Coalition Against Corruption programme (Thai CAC) under Thai Institute of Directors**

- companies that have **declared** their intention to join CAC, and
- companies **certified** by CAC.

## CORPORATE GOVERNANCE REPORT DISCLAIMER

This research report was prepared by Bualuang Securities Public Company Limited and refers to research prepared by Morgan Stanley. Morgan Stanley does not warrant or guarantee the accuracy or completeness of its research reports. Morgan Stanley reserves copyright and other proprietary rights in the material reproduced in this report. Morgan Stanley is under no obligation to inform Bualuang Securities or you if the views or information referred to or reproduced in this research report change.

### Corporate Governance Report disclaimer

The disclosure of the survey result of the Thai Institute of Directors Association (IOD) regarding corporate governance is made pursuant to the policy of the Office of the Securities and Exchange Commission. The IOD survey is based on the information of a company listed on the Stock Exchange of Thailand and the Market for Alternative Investment disclosed to the public and able to be accessed by a general public investor. The result, therefore, is from the perspective of a third party. It is not an evaluation of operation and is not based on inside information.

The survey result is as of the date appearing in the Corporate Governance Report of Thai Listed Companies. As a result, the survey result may be changed after that date. Bualuang Securities Public Company Limited neither confirms nor certifies the accuracy of such survey results.

“Disclaimer: The disclosure of the Anti-Corruption Progress Indicators of a listed company on the Stock Exchange of Thailand, which is assessed by the relevant institution as disclosed by the Office of the Securities and Exchange Commission, is made in order to comply with the policy and sustainable development plan for the listed companies. The relevant institution made this assessment based on the information received from the listed company, as stipulated in the form for the assessment of Anti-corruption which refers to the Annual Registration Statement (Form 56-1), Annual Report (Form 56-2), or other relevant documents or reports of such listed company. The assessment result is therefore made from the perspective of a third party. It is not an assessment of operation and is not based on any inside information. Since this assessment is only the assessment result as of the date appearing in the assessment result, it may be changed after that date or when there is any change to the relevant information. Nevertheless, Bualuang Securities Public Company Limited neither confirms, verifies, nor certifies the accuracy and completeness of the assessment result.”

## BUALUANG RESEARCH – RECOMMENDATION FRAMEWORK

### STOCK RECOMMENDATIONS

**BUY:** Expected positive total returns of 15% or more over the next 12 months.

**HOLD:** Expected total returns of between -15% and +15% over the next 12 months.

**SELL:** Expected negative total returns of 15% or more over the next 12 months.

**TRADING BUY:** Expected positive total returns of 15% or more over the next 3 months.

### SECTOR RECOMMENDATIONS

**OVERWEIGHT:** The industry, as defined by the analyst's coverage universe, is expected to outperform the relevant primary market index over the next 12 months.

**NEUTRAL:** The industry, as defined by the analyst's coverage universe, is expected to perform in line with the relevant primary market index over the next 12 months.

**UNDERWEIGHT:** The industry, as defined by the analyst's coverage universe, is expected to underperform the relevant primary market index over the next 12 months.

## IMPORTANT DISCLOSURES FOR U.S. PERSONS

This research report was prepared by Bualuang Securities Public Company Limited (“BLS”). BLS is not a registered broker-dealer in the United States and, therefore, is not subject to U.S. rules regarding the preparation of research reports and the independence of research analysts. This research report is provided for distribution to “major U.S. institutional investors” in reliance on the exemption from registration provided by Rule 15a-6 of the U.S. Securities Exchange Act of 1934, as amended (the “Exchange Act”).

Under no circumstances should any recipient of this research report effect any transaction to buy or sell securities or related financial instruments through BLS. Rosenblatt Securities Inc. accepts responsibility for the contents of this research report, subject to the terms set out below, to the extent that it is delivered to a U.S. person other than a major U.S. institutional investor.

The analyst whose name appears in this research report is not registered or qualified as a research analyst with the Financial Industry Regulatory Authority (“FINRA”) and may not be an associated person of Rosenblatt Securities Inc. and, therefore, may not be subject to applicable restrictions under FINRA Rules on communications with a subject company, public appearances and trading securities held by a research analyst account.

## Additional Disclosures

This research report is for distribution only under such circumstances as may be permitted by applicable law. This research report has no regard to the specific investment objectives, financial situation or particular needs of any specific recipient, even if sent only to a single recipient. This research report is not guaranteed to be a complete statement or summary of any securities, markets, reports or developments referred to in this research report. Neither BLS nor any of its directors, officers, employees or agents shall have any liability, however arising, for any error, inaccuracy or incompleteness of fact or opinion in this research report or lack of care in this research report’s preparation or publication, or any losses or damages which may arise from the use of this research report.

BLS may rely on information barriers, such as “Chinese Walls” to control the flow of information within the areas, units, divisions, groups, or affiliates of BLS.

Investing in any non-U.S. securities or related financial instruments (including ADRs) discussed in this research report may present certain risks. The securities of non-U.S. issuers may not be registered with, or be subject to the regulations of, the U.S. Securities and Exchange Commission. Information on such non-U.S. securities or related financial instruments may be limited. Foreign companies may not be subject to audit and reporting standards and regulatory requirements comparable to those in effect within the United States.

The value of any investment or income from any securities or related financial instruments discussed in this research report denominated in a currency other than U.S. dollars is subject to exchange rate fluctuations that may have a positive or adverse effect on the value of or income from such securities or related financial instruments.

Past performance is not necessarily a guide to future performance and no representation or warranty, express or implied, is made by BLS with respect to future performance. Income from investments may fluctuate. The price or value of the investments to which this research report relates, either directly or indirectly, may fall or rise against the interest of investors. Any recommendation or opinion contained in this research report may become outdated as a consequence of changes in the environment in which the issuer of the securities under analysis operates, in addition to changes in the estimates and forecasts, assumptions and valuation methodology used herein.

No part of the content of this research report may be copied, forwarded or duplicated in any form or by any means without the prior consent of BLS and BLS accepts no liability whatsoever for the actions of third parties in this respect.