

# TFEX Daily

21 เมษายน 2566

## S50M23

สถานะ Short นะะ run trend/ ฝั่งซื้อเนะรอ...ยังไม่รีบรับ

### Gold spot

แผนย่อซื้อกลับโซนรับ....ได้ผล!

“ดัชนีหลุด low.....ฝั่งขาย เนะ run trend”

## S50M23

“ดัชนีหลุด low.....เน้นฝั่ง short”

มุมมอง: ดัชนีร่วงลงหลุด low จุด ขณะที่ RSI weak! โค้งลงบ่งชี้ความอ่อนแรง ด้านราคา ล่าสุดต่ำกว่าระดับ 50

แผนเทรด.....สถานะ Short ถูกทางนะะถือต่อ run trend ในทางตรงกันข้าม สถานะซื้อเนะรอสัญญาณยังไม่รีบ

เงื่อนไขคิดหากปรับตัวขึ้นสูงกว่า 950 เนะปิดสถานะหรือกรณีขาดทุน มากกว่า 10% ของพอร์ต)

“แผนย่อซื้อกลับ....ได้ผล.”

## Gold spot

จับสัญญาณเทรด...ทองคำ

มุมมอง: ทองคำเคยทะลุขึ้นไปทำจุดสูงสุดที่ \$2048/ออนซ์ ยืนได้ไม่นาน แต่ ล่าสุด throw back เริ่มสู้ที่แนวรับเส้น EMA 25 วันได้ตามคาด! ยืนยัน โครงสร้างหลักยังเป็นทิศทางขาขึ้น

แผนย่อซื้อกลับโซนรับ \$1,980 ได้ผล! ถูกทางนะะถือต่อ ลุ้นโซนต้าน \$2050/ออนซ์ ในทางตรงข้ามสถานะขายเนะรอสัญญาณยืนยันขาลง ยังไม่รีบ

Note:เปิดความเสี่ยงหากผลตอบแทนติดลบมากกว่า 10% ของพอร์ต

## วิกิจ ถาวรรัตน์

นักวิเคราะห์การลงทุนปัจจัยพื้นฐานด้านตลาดทุน/ปัจจัยทางเทคนิค

Wikij.tir@bualuang.co.th Tel. (662) 618-1336

S50M23: รับ 936 ต้าน 950

GFJ23: รับ 31,500 ต้าน 33,000

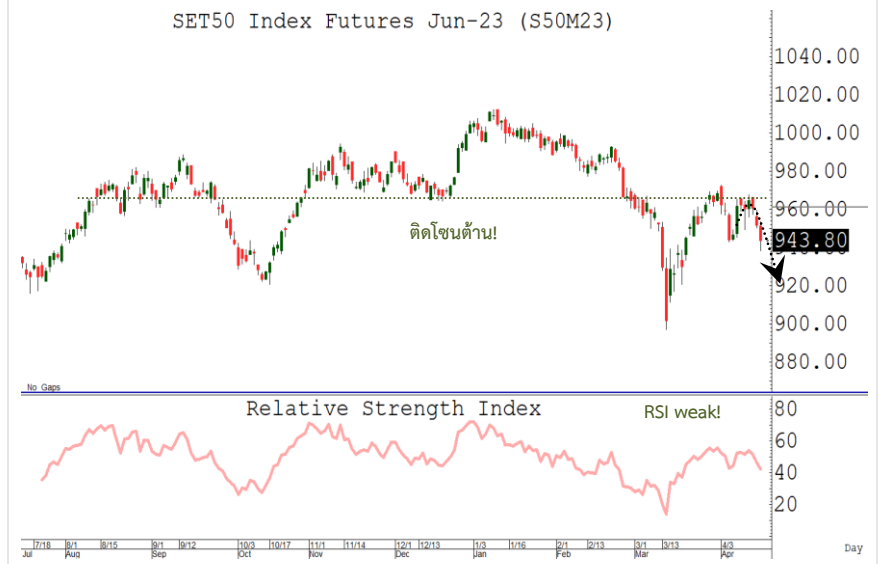
มุมมองทางเทคนิค โดย คุณธนรัตน์ อิศรกุล

นักวิเคราะห์การลงทุนปัจจัยพื้นฐานด้านหลักทรัพย์และปัจจัยทางเทคนิค

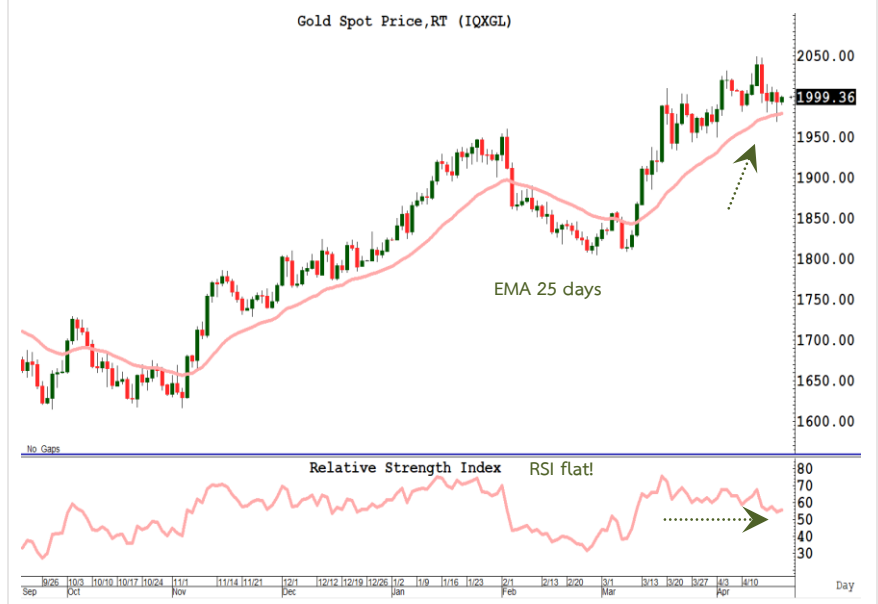
Thanarut@bualuang.co.th

Tel. (662) 618-1334

### SET50 Index Future



### Gold Spot



หลักทรัพย์	เปิด	สูงสุด	ต่ำสุด	ปิด	เฉลี่ย	ราคาที่ใช้ชำระ ราคา	เปลี่ยนแปลง	ปริมาณ (สัญญา)	สถานะคงค้าง (สัญญา)
SET50	953.12	954.96	941.16	943.5	948.19	N/A	-10.3	N/A	N/A
S50J23	950.30	953.50	940.8	943.90	946.60	943.90	-8.1	73	197
S50K23	953.1	954.00	941.6	942.20	946.10	942.20	-9.4	90	179
S50M23	951.5	953.80	938.4	943.10	945.60	943.80	-7.9	230,984	402,020
S50U23	947	950.60	935.8	940.40	942.20	940.90	-7.8	20,630	47,645
S50Z23	946.6	950.90	936.2	941.00	942.30	941.20	-7.7	5,322	22,613
S50H24	945.7	947.70	933.7	937.60	939.40	937.90	-8	3,004	3,570
<b>Total</b>								<b>260,103</b>	<b>476,224</b>

Source : SET Smart

#### Trading by Investor Type - SET50 Index Futures

##### 5 วันย้อนหลัง

วันที่	นักลงทุนต่างประเทศ ปริมาณ			นักลงทุนสถาบัน ปริมาณ			นักลงทุนภายในประเทศ ปริมาณ			รวม	
	ซื้อ	ขาย	สุทธิ	ซื้อ	ขาย	สุทธิ	ซื้อ	ขาย	สุทธิ	ปริมาณ	สถานะคงค้าง
20/04/2023	90,905	100,021	-9,116	42,409	52,003	-9,594	126,789	108,079	18,710	260,103	476,224
19/04/2023	99,116	86,681	12,435	45,142	43,929	1,213	111,120	124,768	-13,648	255,378	471,490
18/04/2023	72,742	90,377	-17,635	33,706	25,777	7,929	73,730	64,024	9,706	180,178	471,138
17/04/2023	92,047	95,283	-3,236	35,562	35,928	-366	87,108	83,506	3,602	214,717	475,657
12/04/2023	86,485	84,977	1,508	33,718	36,040	-2,322	105,887	105,073	814	226,090	466,321

##### 4 เดือนย้อนหลัง

วันที่	นักลงทุนต่างประเทศ ปริมาณ			นักลงทุนสถาบัน ปริมาณ			นักลงทุนภายในประเทศ ปริมาณ			รวม	
	ซื้อ	ขาย	สุทธิ	ซื้อ	ขาย	สุทธิ	ซื้อ	ขาย	สุทธิ	ปริมาณ	สถานะคงค้าง
เม.ย. 2023	875,742	916,681	-40,939	396,372	391,869	4,503	1,004,551	968,115	36,436	2,276,665	476,224
มี.ค. 2023	3,051,754	2,935,366	116,388	1,110,804	1,094,251	16,553	2,675,691	2,808,632	-132,941	6,838,249	435,301
ก.พ. 2023	1,468,424	1,592,263	-123,839	668,550	650,734	17,816	2,019,686	1,913,663	106,023	4,156,660	664,829
ม.ค. 2023	1,346,543	1,446,322	-99,779	678,348	675,116	3,232	1,994,379	1,897,832	96,547	4,019,270	673,734

##### 4 ไตรมาสย้อนหลัง

วันที่	นักลงทุนต่างประเทศ ปริมาณ			นักลงทุนสถาบัน ปริมาณ			นักลงทุนภายในประเทศ ปริมาณ			รวม	
	ซื้อ	ขาย	สุทธิ	ซื้อ	ขาย	สุทธิ	ซื้อ	ขาย	สุทธิ	ปริมาณ	สถานะคงค้าง
Q2/2023	875,742	916,681	-40,939	396,372	391,869	4,503	1,004,551	968,115	36,436	2,276,665	476,224
Q1/2023	5,866,721	5,973,951	-107,230	2,457,702	2,420,101	37,601	6,689,756	6,620,127	69,629	15,014,179	435,301
Q4/2022	5,773,579	5,666,820	106,759	2,433,982	2,462,801	-28,819	5,991,792	6,069,732	-77,940	14,199,353	563,223
Q3/2022	6,188,060	6,186,241	1,819	2,707,073	2,714,363	-7,290	6,950,031	6,944,560	5,471	15,845,164	495,136

Source : SET Smart

#### Metal Futures

หลักทรัพย์	เปิด	สูงสุด	ต่ำสุด	ปิด	เฉลี่ย	ราคาที่ใช้ชำระ ราคา	เปลี่ยนแปลง	ปริมาณ (สัญญา)	สถานะคงค้าง (สัญญา)
GF10J23	32,360	32,700	32,350	32,660	32,603	32,680.00	260	1227	3,381
GFJ23	32,470	32,690	32,470	32,650	32,614	32,630.00	180	38	231
GF10M23	32,490	32,810	32,460	32,780	32,719	32,790.00	250	3010	5,768
GFM23	32,510	32,780	32,510	32,750	32,745	32,750.00	170	66	242
GOM23	1,994	2,022	1,993	2,022	2,013	2,021.70	23.5	41674	22,081
SVFM23	24.90	25.55	24.90	25.49	25.21	25.49	0.56	261	952
GF10Q23	32,580	32,880	32,550	32,840	32,795	32,860.00	240	1448	2,251
GFQ23	32,830	32,870	32,830	32,870	32,858	32,830.00	210	26	101
GOU23	2,023	2,051	2,022	2,050	2,040	2,050.30	23.1	9292	4,922
SVFU23	25.30	25.92	25.30	25.72	25.73	25.72	0.38	31	210

Source : SET Smart

#### Single Stock Futures

blssk	เปิด	สูงสุด	ต่ำสุด	ปิด	เฉลี่ย	ราคาที่ใช้ชำระ ราคา	เปลี่ยนแปลง	ปริมาณ (สัญญา)	สถานะคงค้าง (สัญญา)
AAVM23	2.72	2.73	2.7	2.71	2.71	2.71	-0.02	1,183	69,410
ADVANCM23	211	212.00	210.3	212.00	211.29	212.00	-0.74	474	3,815
AEONTSM23	-	-	-	-	-	190.11	1.21	-	201
AMATAM23	22.88	22.90	22.86	22.90	22.89	22.90	0.3	228	881
AOTM23	72.26	72.39	71.85	71.85	72.09	71.90	-0.55	410	2,591
APM23	11.8	11.80	11.8	11.80	11.80	11.80	0.15	504	3,514
AWCM23	5.3	5.44	5.3	5.39	5.39	5.39	0.09	23	8,212
BAM23	-	-	-	-	-	12.84	0.1	-	1,093
BAMM23	13.09	13.15	12.8	13.15	12.98	13.15	-0.03	510	14,151
BANPUM23	9.7	9.70	9.56	9.57	9.61	9.57	-0.07	106	49,783
BAYM23	-	-	-	-	-	29.69	-	-	549
BBLM23	156.3	156.50	154.35	155.00	155.40	155.03	-0.66	243	4,051
BCHM23	20.85	20.85	20.75	20.75	20.80	20.75	-0.15	102	13,236
BCPGM23	10.24	10.24	10.24	10.24	10.24	10.24	-0.04	223	6,853
BCPM23	30.75	30.85	30.75	30.85	30.82	30.85	0.15	3	5,945
BDM23	29.25	29.49	29	29.00	29.19	29.00	-0.35	215	1,314
BEAUTYM23	1.2	1.20	1.2	1.20	1.20	1.21	-0.02	21	47,821
BECM23	8.58	8.60	8.47	8.57	8.50	8.50	-0.17	120	21,383
BEMM23	8.95	8.95	8.93	8.93	8.95	8.93	-0.12	24	11,844
BGRIMM23	38	38.30	37.75	38.20	38.08	38.20	-0.55	325	3,292
BHM23	239.5	239.75	238	239.00	239.01	239.00	-1.95	92	780
BJCM23	37.7	37.70	37.7	37.70	37.70	37.70	-0.35	102	2,068
BLAM23	28.29	28.60	28.22	28.33	28.44	28.33	-0.18	143	8,552
BLANDM23	0.97	0.97	0.96	0.97	0.97	0.97	-	5	88,202
BPPM23	-	-	-	-	-	14.12	-0.5	-	1,803
BTSM23	7.7	7.70	7.6	7.65	7.65	7.65	0.04	3	13,279
CBGM23	80.56	80.57	76.75	77.80	79.03	77.78	-3.72	1,041	5,321
CENTELM23	54.21	54.85	54.2	54.85	54.52	54.85	1.35	217	1,742
CHGM23	3.6	3.60	3.52	3.56	3.55	3.56	-0.02	549	6,388
CKM23	20.95	21.15	20.95	21.15	20.97	21.15	0.23	411	843
CKPM23	3.96	4.02	3.89	3.94	3.94	3.94	-0.02	679	29,340
COM7M23	28.55	28.60	27.81	28.00	28.15	28.00	-0.05	434	10,934
CPALLM23	63.7	63.70	62.87	63.54	63.18	63.54	-	379	3,468
CPFM23	20.68	20.72	20.5	20.64	20.62	20.64	-0.13	438	24,243
CPNM23	69.07	69.07	68.5	68.50	68.64	68.50	-0.77	208	537
CRCM23	42.69	42.69	42.6	42.60	42.65	42.60	-1.3	102	1,619
DELTAM23	965.01	966.50	950	961.00	958.79	960.46	-8.55	76	1,184
DTACM23X	-	-	-	-	-	8.03	0.1	-	181
EAM23	73.45	73.66	72.5	72.50	73.11	72.60	-1.02	348	22,038
EASTWM23	-	-	-	-	-	4.94	-0.09	500	10
EGCOM23	161	161.00	157.93	157.93	159.98	159.00	-1.93	6	550
EPGM23	-	-	-	-	-	7.91	-0.1	-	4,000
ERWM23	4.8	4.84	4.8	4.82	4.82	4.82	0.1	3	4,747
ESSOM23	8.43	8.43	8.33	8.34	8.35	8.34	-0.14	57	18,131
GFPTM23	-	-	-	-	-	11.40	-0.1	100	5,240
GLOBALM23X	17.27	17.27	17.05	17.05	17.19	17.06	-0.49	429	2,636
GPSCM23	65.8	65.80	63.6	63.60	64.44	63.60	-1.7	433	4,770
GULFM23	52.5	52.75	51.42	51.89	52.00	51.82	-1.1	1,365	17,296
GUNKULM23	3.9	3.99	3.9	3.94	3.94	3.94	-0.01	4,451	120,673
HANAM23	48	48.15	47.3	47.75	47.79	47.75	-0.8	110	1,597
HMPROM23	13.48	13.56	13.46	13.56	13.47	13.56	-0.46	1,633	5,994
ICHIM23	-	-	-	-	-	12.73	-0.3	600	12,980
INTUCHM23X	73.55	73.56	73.3	73.30	73.49	73.30	0.46	74	82
IRPCM23	2.41	2.46	2.38	2.44	2.40	2.41	-0.03	1,074	32,146
ITDM23	1.6	1.62	1.58	1.62	1.59	1.60	-0.04	69	31,853
IVLM23	33.48	33.48	32.33	32.85	32.78	32.85	-0.89	765	12,985
JASM23	1.97	2.00	1.95	2.00	1.97	2.00	0.01	505	71,860

blssk	เปิด	สูงสุด	ต่ำสุด	ปิด	เฉลี่ย	ราคาที่ใช้ชำระ ราคา	เปลี่ยนแปลง	ปริมาณ (สัญญา)	สถานะคงค้าง (สัญญา)
JMTM23	39.99	40.25	38.03	39.20	39.23	39.59	-0.07	1,221	6,588
KBANKM23	129.1	130.00	126	127.00	127.62	127.00	-4.73	3,219	8,160
KCEM23	44.01	44.01	42.75	42.90	43.32	42.90	-1.35	653	5,530
KEXM23	-	-	-	-	-	15.65	-0.16	-	3,620
KKPM23	62.25	62.25	62.05	62.05	62.08	62.05	-0.45	66	3,312
KTBM23	17	17.70	16.98	17.54	17.47	17.54	0.87	8,950	22,614
KTCM23	53.67	54.45	53.67	53.75	54.04	53.75	-0.05	142	7,022
LHM23	9.54	9.54	9.45	9.45	9.52	9.45	-0.27	5	844
LPNM23	4.71	4.71	4.69	4.69	4.70	4.69	0.01	8	3,044
MAJORM23	16.53	16.53	16.53	16.53	16.53	16.53	0.01	2	4,284
MBKM23	-	-	-	-	-	15.01	-0.94	300	1,350
MEGAM23	42.75	42.75	41.94	41.94	42.36	41.94	-1.15	12	1,425
MINTM23	30.65	31.15	30.62	30.90	30.80	30.90	-0.09	19	2,498
MM23	49.15	51.50	49.15	51.50	50.33	51.44	-0.89	52	1,277
MTCM23	36	36.00	35.16	35.59	35.64	35.59	-0.36	484	6,655
ORIM23	-	-	-	-	-	11.70	0.2	-	4,127
ORM23	22	22.15	21.85	22.15	22.01	22.00	-0.1	235	3,891
OSPM23	28	28.33	27.05	28.33	27.84	27.89	-0.46	43	2,369
PLANBM23	-	-	-	-	-	8.47	-0.15	-	20,019
PRMM23	-	-	-	-	-	7.16	-0.1	-	10,388
PSHM23	12.28	12.28	12.28	12.28	12.28	12.28	0.02	5	353
PSLM23	13.62	13.62	13.46	13.46	13.57	13.46	-0.25	2,709	3,852
PTGM23	13.5	13.67	13.5	13.65	13.57	13.64	0.14	310	17,506
PTTEPM23	157	157.00	153.8	154.00	155.04	154.02	-3.46	1,271	3,607
PTTGCM23	41.8	41.80	41	41.10	41.30	41.10	-1	348	4,782
PTTM23	31.25	31.25	31	31.00	31.12	31.00	-0.25	255	7,773
QHM23	2.36	2.38	2.36	2.37	2.37	2.37	-0.01	62	2,221
RATCHM23	38	38.00	38	38.00	38.00	38.00	-0.58	1	1,310
RSM23X	14.76	14.76	14.62	14.62	14.73	14.62	-0.14	186	24,179
SAMARTM23	-	-	-	-	-	4.09	-0.08	-	6,889
SAWADM23	53.81	54.63	53.52	54.63	53.79	54.49	0.68	648	6,389
SCBM23	100.99	100.99	99.05	100.02	99.52	99.76	-0.92	966	4,601
SCCM23	309	312.95	307	309.88	309.92	309.88	-0.14	137	2,099
SCGPM23	43.95	44.27	43.5	43.50	43.93	43.60	-0.15	213	4,118
SGPM23	-	-	-	-	-	8.70	-0.05	-	202
SIRIM23	1.8	1.80	1.77	1.77	1.78	1.78	-0.03	4,601	25,333
SM23	1.68	1.68	1.67	1.67	1.67	1.66	-0.05	1,008	22,414
SPALIM23	21.78	21.78	21.78	21.78	21.78	21.78	-0.72	105	2,064
SPCGM23	-	-	-	-	-	13.18	-0.1	-	2
SPRCM23	-	-	-	-	-	10.03	-0.09	-	1,040
STAM23	21.3	21.30	20.9	20.94	21.20	20.94	-0.96	445	2,085
STECM23	12.45	12.45	12.05	12.13	12.27	12.20	-0.17	1,186	9,141
STGTM23	9.95	9.95	9.7	9.70	9.79	9.70	-0.48	27	3,484
STPIM23	-	-	-	-	-	3.99	-0.05	-	20,429
SUPERM23	0.65	0.67	0.64	0.67	0.65	0.66	-0.02	1,022	48,371
TASCOM23	19.9	20.20	19.9	20.10	20.07	20.10	0.3	2,016	2,499
TCAPM23	-	-	-	-	-	42.79	0.2	-	24
THAIM23	-	-	-	-	-	3.36	-	-	-
THANIM23	-	-	-	-	-	3.68	-0.06	500	4,022
THCOMM23	13.17	13.37	12	12.30	12.58	12.30	-1.2	4,117	1,233
THGM23	-	-	-	-	-	67.56	-	20	28
TISCOM23	91.6	91.60	89.92	89.92	90.91	89.99	-1.52	33	225
TKNM23	9.16	9.38	9.16	9.38	9.19	9.38	-0.1	521	15,643
TOAM23	28.5	28.50	28.5	28.50	28.50	28.50	-1.5	101	505
TOPM23	49.42	49.90	48.79	48.79	49.38	48.79	-0.53	73	1,047
TPIPLM23	1.56	1.56	1.55	1.55	1.56	1.50	-0.04	2,014	2,238
TPIPPM23	3.4	3.40	3.39	3.39	3.40	3.39	0.05	4	3,167
TQMM23	31.5	31.50	31.5	31.50	31.50	31.50	-1.5	321	7,836

blssk	เปิด	สูงสุด	ต่ำสุด	ปิด	เฉลี่ย	ราคาที่ใช้ชำระ ราคา	เปลี่ยนแปลง	ปริมาณ (สัญญา)	สถานะคงค้าง (สัญญา)
TRUEEM23X	7.97	7.97	7.97	7.97	7.97	8.03	0.05	10	208
TRUEM23	7.99	8.04	7.92	8.04	7.99	8.04	0.05	541	18,092
TTAM23	-	-	-	-	-	7.79	-0.09	-	1,841
TTBM23	1.42	1.45	1.41	1.41	1.43	1.41	-0.01	4,603	10,387
TTCLM23	4.33	4.33	4.33	4.33	4.33	4.33	-0.1	1	2,586
TTWM23	-	-	-	-	-	8.56	-	-	501
TUM23	13.95	13.95	13.83	13.92	13.86	13.92	-0.2	1,824	20,088
TVOM23X	-	-	-	-	-	25.89	-0.25	100	300
UNIQM23	3.79	3.79	3.79	3.79	3.79	3.79	0.02	1	6,575
VGIM23	3.99	3.99	3.99	3.99	3.99	3.99	0.01	1	10,481
VNGM23	4.88	4.88	4.86	4.86	4.87	4.92	0.02	2	8,602
WHAM23	4.3	4.42	4.23	4.37	4.27	4.37	0.03	6,277	13,439
<b>Total</b>								<b>77,611</b>	<b>1,323,433</b>

Source : SET Smart

## Bualuang Securities Public Company Limited

## DISCLAIMER

BUALUANG SECURITIES PUBLIC COMPANY LIMITED (BLS) is a subsidiary of BANGKOK BANK PUBLIC COMPANY LIMITED (BBL). This document is produced based upon sources believed to be reliable but their accuracy, completeness or correctness is not guaranteed. The statements or expressions of opinion herein were arrived at after due and careful consideration to use as information for investment. Expressions of opinion contained herein are subject to change without notice. This document is not, and should not be construed as, an offer or the solicitation of an offer to buy or sell any securities. The use of any information shall be at the sole discretion and risk of the user.

BUALUANG SECURITIES PUBLIC COMPANY LIMITED MAY BE IN RELATIONSHIP WITH THE SECURITIES IN THIS REPORT. "Opinions, projections and other information contained in this report are based upon sources believed to be accurate including the draft prospectus, but no responsibility is accepted for any loss occasioned by reliance placed upon the contents hereof. Bualuang Securities Public Company Limited may from time to time perform investment, advisory or other services for companies mentioned in this report, as well as dealing (as principal or otherwise) in, or otherwise being interested in, any securities mentioned herein, This report does not constitute a solicitation to buy or sell any securities". Investors should carefully read details in the prospectus before making investment decision.






BUALUANG SECURITIES PUBLIC COMPANY LIMITED MAY ACT AS MARKET MAKER AND ISSUER OF DWs, AND ISSUER OF STRUCTURED NOTES ON THESE SECURITIES. The company may prepare the research reports on those underlying securities. Investors should carefully read the details of the derivative warrants and structured notes in the prospectus before making investment decisions.

ADVANC	AMATA	AOT	BDMS	BH	CBG	CENTEL	CPALL	GLOBAL	GPSC	IRPC	KBANK	KCE	KTC	MINT
PTG	PTT	PTTEP	PTTGC	SCB	SPRC	TOP	WHA	ESSO	STA	BGRIM	GULF	MTC	AWC	CRC
CPF	CPN	HANA	HMPRO	IVL	OSP	SAWAD	BANPU	BCH	BTS	SCC	TISCO	TU	INTUCH	RATCH
VGI	SCGP	COM7	DOHOME	JMT	CHG	TTB	BAM	BCP	AP	KTB	KKP	OR	BEM	GUNKUL
EA	SPALI	RBF	STGT	JMART	BEC	BLA	KEX	RCL	SINGER	STARK	TIDLOR	FORTH	TIPH	AAV
DELTA	BCPG	SABUY	THG	CKP	TRUE	PSL	SIRI							

BUALUANG SECURITIES PUBLIC COMPANY LIMITED IS OR MAY BE AN UNDERWRITER/CO-UNDERWRITER/JOINT LEAD IN RESPECT OF THE INITIAL PUBLIC OFFERING (IPO) OF SECURITIES.

Financial Advisor	Lead underwriter/ Underwriter/ Co-underwriter
	MGC

### CG Rating

Score Range	Score Range	Description
90 – 100		Excellent
80 – 89		Very Good
70 – 79		Good
60 – 69		Satisfactory
50 – 00359		Pass
Less than 50	No logo given	-

### Thailand's Private Sector Collective Action Coalition Against Corruption programme (Thai CAC) under Thai Institute of Directors

- companies that have **declared** their intention to join CAC, and
- companies **certified** by CAC.

## CORPORATE GOVERNANCE REPORT DISCLAIMER

This research report was prepared by Bualuang Securities Public Company Limited and refers to research prepared by Morgan Stanley. Morgan Stanley does not warrant or guarantee the accuracy or completeness of its research reports. Morgan Stanley reserves copyright and other proprietary rights in the material reproduced in this report. Morgan Stanley is under no obligation to inform Bualuang Securities or you if the views or information referred to or reproduced in this research report change.

### Corporate Governance Report disclaimer

The disclosure of the survey result of the Thai Institute of Directors Association (IOD) regarding corporate governance is made pursuant to the policy of the Office of the Securities and Exchange Commission. The IOD survey is based on the information of a company listed on the Stock Exchange of Thailand and the Market for Alternative Investment disclosed to the public and able to be accessed by a general public investor. The result, therefore, is from the perspective of a third party. It is not an evaluation of operation and is not based on inside information.

The survey result is as of the date appearing in the Corporate Governance Report of Thai Listed Companies. As a result, the survey result may be changed after that date. Bualuang Securities Public Company Limited neither confirms nor certifies the accuracy of such survey results.

“Disclaimer: The disclosure of the Anti-Corruption Progress Indicators of a listed company on the Stock Exchange of Thailand, which is assessed by the relevant institution as disclosed by the Office of the Securities and Exchange Commission, is made in order to comply with the policy and sustainable development plan for the listed companies. The relevant institution made this assessment based on the information received from the listed company, as stipulated in the form for the assessment of Anti-corruption which refers to the Annual Registration Statement (Form 56-1), Annual Report (Form 56-2), or other relevant documents or reports of such listed company. The assessment result is therefore made from the perspective of a third party. It is not an assessment of operation and is not based on any inside information. Since this assessment is only the assessment result as of the date appearing in the assessment result, it may be changed after that date or when there is any change to the relevant information. Nevertheless, Bualuang Securities Public Company Limited neither confirms, verifies, nor certifies the accuracy and completeness of the assessment result.”

## BUALUANG RESEARCH – RECOMMENDATION FRAMEWORK

### STOCK RECOMMENDATIONS

**BUY:** Expected positive total returns of 15% or more over the next 12 months.

**HOLD:** Expected total returns of between -15% and +15% over the next 12 months.

**SELL:** Expected negative total returns of 15% or more over the next 12 months.

**TRADING BUY:** Expected positive total returns of 15% or more over the next 3 months.

### SECTOR RECOMMENDATIONS

**OVERWEIGHT:** The industry, as defined by the analyst's coverage universe, is expected to outperform the relevant primary market index over the next 12 months.

**NEUTRAL:** The industry, as defined by the analyst's coverage universe, is expected to perform in line with the relevant primary market index over the next 12 months.

**UNDERWEIGHT:** The industry, as defined by the analyst's coverage universe, is expected to underperform the relevant primary market index over the next 12 months.

## IMPORTANT DISCLOSURES FOR U.S. PERSONS

This research report was prepared by Bualuang Securities Public Company Limited (“BLS”). BLS is not a registered broker-dealer in the United States and, therefore, is not subject to U.S. rules regarding the preparation of research reports and the independence of research analysts. This research report is provided for distribution to “major U.S. institutional investors” in reliance on the exemption from registration provided by Rule 15a-6 of the U.S. Securities Exchange Act of 1934, as amended (the “Exchange Act”).

Under no circumstances should any recipient of this research report effect any transaction to buy or sell securities or related financial instruments through BLS. Rosenblatt Securities Inc. accepts responsibility for the contents of this research report, subject to the terms set out below, to the extent that it is delivered to a U.S. person other than a major U.S. institutional investor.

The analyst whose name appears in this research report is not registered or qualified as a research analyst with the Financial Industry Regulatory Authority (“FINRA”) and may not be an associated person of Rosenblatt Securities Inc. and, therefore, may not be subject to applicable restrictions under FINRA Rules on communications with a subject company, public appearances and trading securities held by a research analyst account.

## Additional Disclosures

This research report is for distribution only under such circumstances as may be permitted by applicable law. This research report has no regard to the specific investment objectives, financial situation or particular needs of any specific recipient, even if sent only to a single recipient. This research report is not guaranteed to be a complete statement or summary of any securities, markets, reports or developments referred to in this research report. Neither BLS nor any of its directors, officers, employees or agents shall have any liability, however arising, for any error, inaccuracy or incompleteness of fact or opinion in this research report or lack of care in this research report’s preparation or publication, or any losses or damages which may arise from the use of this research report.

BLS may rely on information barriers, such as “Chinese Walls” to control the flow of information within the areas, units, divisions, groups, or affiliates of BLS.

Investing in any non-U.S. securities or related financial instruments (including ADRs) discussed in this research report may present certain risks. The securities of non-U.S. issuers may not be registered with, or be subject to the regulations of, the U.S. Securities and Exchange Commission. Information on such non-U.S. securities or related financial instruments may be limited. Foreign companies may not be subject to audit and reporting standards and regulatory requirements comparable to those in effect within the United States.

The value of any investment or income from any securities or related financial instruments discussed in this research report denominated in a currency other than U.S. dollars is subject to exchange rate fluctuations that may have a positive or adverse effect on the value of or income from such securities or related financial instruments.

Past performance is not necessarily a guide to future performance and no representation or warranty, express or implied, is made by BLS with respect to future performance. Income from investments may fluctuate. The price or value of the investments to which this research report relates, either directly or indirectly, may fall or rise against the interest of investors. Any recommendation or opinion contained in this research report may become outdated as a consequence of changes in the environment in which the issuer of the securities under analysis operates, in addition to changes in the estimates and forecasts, assumptions and valuation methodology used herein.

No part of the content of this research report may be copied, forwarded or duplicated in any form or by any means without the prior consent of BLS and BLS accepts no liability whatsoever for the actions of third parties in this respect.