

TFEX Daily

26 กรกฎาคม 2566

SET50

แผนแก้มือสถานะ “ซื้อ”

Gold spot

“แผนย่อ...รับกลับ (ซื้อโซนรับ)”

SET50: รับ 940 ต้าน 950-955

GFQ23: รับ 32,00 ต้าน 33,000

มุมมองทางเทคนิค โดย คุณธนรัตน์ อิศรกุล

นักวิเคราะห์การลงทุนปัจจัยพื้นฐานด้านหลักทรัพย์และปัจจัยทางเทคนิค

Thanarut@bualuang.co.th

Tel. (662) 618-1334

“ทดสอบเส้น EMA 200 วัน ”

SET50

แผนแก้มือสถานะ “ซื้อ”

มุมมอง: ดัชนีขึ้นเส้น EMA 200 วัน ไม่ผ่าน! ขณะที่โมเมนตัม RSI ติดเส้นแนวโน้ม ซึ่งดัชนีอาจจะต้องรอสัญญาณการเปลี่ยนแปลง อย่างไรก็ตาม การปรับฐานมองไม่ลึกเช่นกัน

แผนแก้มือ...สถานะซื้อไม่หลุด low ต่ำกว่า 940 จุดและถือต่อ ส่วนฝั่งสถานะขายและรอสัญญาณขึ้นการเปลี่ยนโครงสร้าง...ไม่รีบ

Note: เงื่อนไขผิดทางกรณีขาดทุนมากกว่า 10% ของพอร์ตและปิดสถานะ หรือหลุด low ต่ำกว่า 935 จุด (week low)

SET50 Index Future



“แผนย่อ...รับกลับ”

Gold spot

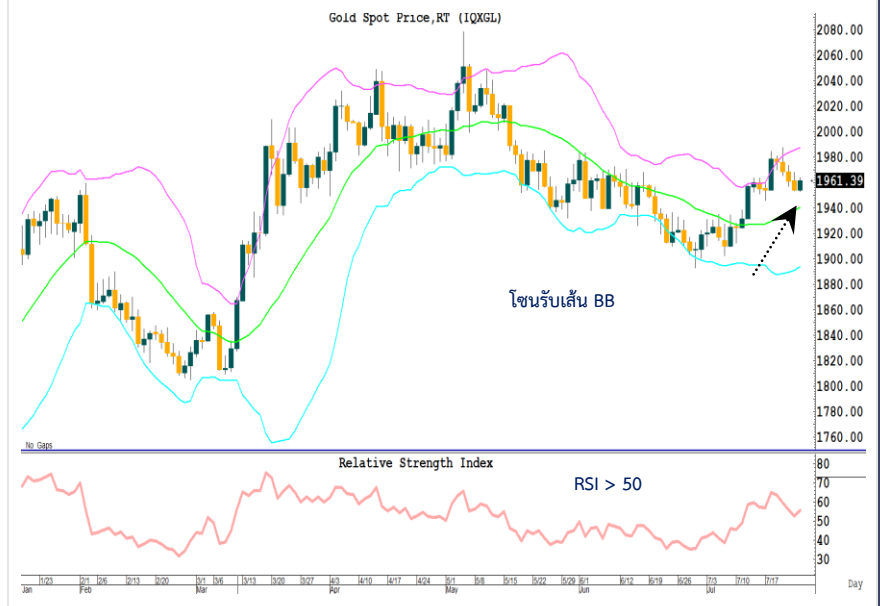
จับสัญญาณเทรนด์...ทองคำ

มุมมอง: ราคาทองคำปรับตัวลง ภายหลังจากทดสอบโซนต้านที่เคยให้ไว้บริเวณ \$2,000/ออนซ์ ตามคาด อย่างไรก็ตามคาดว่าดัชนีจะยืนบริเวณโซนรับเส้น BB เพื่อยืนยันโครงสร้างขาขึ้นระยะกลาง ยังไม่จบบรรยากาศ

แผนเทรด...และรอซื้อกลับบริเวณโซนรับ \$1,950-1,955/ออนซ์ (เส้น Bollinger band) ในทางตรงข้ามสถานะ Short และทยอยปิดสถานะ

Note: กรณีผลตอบแทนติดลบมากกว่า 10% ของพอร์ต และปิดสถานะหรือปรับตัวลงต่ำกว่า low \$1930/ออนซ์ และปิดความเสี่ยง

Gold Spot



วิกิจ ถาวรธนรัตน์

นักวิเคราะห์การลงทุนปัจจัยพื้นฐานด้านตลาดทุน/ปัจจัยทางเทคนิค

Wikij.tir@bualuang.co.th Tel. (662) 618-1336

หลักทรัพย์	เปิด	สูงสุด	ต่ำสุด	ปิด	เฉลี่ย	ราคาที่ใช้ชำระราคา	เปลี่ยนแปลง	ปริมาณ (สัญญา)	สถานะคงค้าง (สัญญา)
SET50	947.92	951.12	940.79	946.1	946.48	N/A	2.09	N/A	N/A
S50N23	942.20	942.20	941.7	941.70	942.00	941.70	0.6	2	154
S50Q23	-	-	-	-	-	941.10	-1.6	-	40
S50U23	941	944.70	938.5	943.20	942.10	943.10	5.1	174,111	497,320
S50Z23	941.9	945.20	939.6	944.00	942.80	943.80	4.4	11,421	73,185
S50H24	937	940.50	935.1	938.90	938.20	938.60	4.2	1,500	14,372
S50M24	934.1	938.30	933.5	936.90	935.90	936.60	4.1	1,578	6,025
Total								188,612	591,096

Source : SET Smart

Trading by Investor Type - SET50 Index Futures

5 วันย้อนหลัง

วันที่	นักลงทุนต่างประเทศ ปริมาณ			นักลงทุนสถาบัน ปริมาณ			นักลงทุนภายในประเทศ ปริมาณ			รวม	
	ซื้อ	ขาย	สุทธิ	ซื้อ	ขาย	สุทธิ	ซื้อ	ขาย	สุทธิ	ปริมาณ	สถานะคงค้าง
25/07/2023	83,254	65,590	17,664	27,149	28,666	-1,517	78,209	94,356	-16,147	188,612	591,096
24/07/2023	80,201	81,615	-1,414	38,096	36,515	1,581	123,235	123,402	-167	241,532	601,541
21/07/2023	111,246	91,866	19,380	33,853	39,785	-5,932	145,074	158,522	-13,448	290,173	632,483
20/07/2023	93,301	89,082	4,219	37,315	38,132	-817	109,153	112,555	-3,402	239,769	623,812
19/07/2023	98,441	89,724	8,717	38,611	38,129	482	110,567	119,766	-9,199	247,619	627,987

4 เดือนย้อนหลัง

วันที่	นักลงทุนต่างประเทศ ปริมาณ			นักลงทุนสถาบัน ปริมาณ			นักลงทุนภายในประเทศ ปริมาณ			รวม	
	ซื้อ	ขาย	สุทธิ	ซื้อ	ขาย	สุทธิ	ซื้อ	ขาย	สุทธิ	ปริมาณ	สถานะคงค้าง
ก.ค. 2023	1,591,663	1,453,252	138,411	594,618	597,486	-2,868	1,889,955	2,025,498	-135,543	4,076,236	591,096
มี.ย. 2023	2,918,155	2,910,668	7,487	924,165	930,084	-5,919	2,574,302	2,575,870	-1,568	6,416,622	678,895
พ.ค. 2023	1,783,391	1,798,312	-14,921	810,468	798,909	11,559	2,652,501	2,649,139	3,362	5,246,360	671,089
เม.ย. 2023	1,347,692	1,425,906	-78,214	617,464	617,425	39	1,616,874	1,538,699	78,175	3,582,030	500,644

4 ไตรมาสย้อนหลัง

วันที่	นักลงทุนต่างประเทศ ปริมาณ			นักลงทุนสถาบัน ปริมาณ			นักลงทุนภายในประเทศ ปริมาณ			รวม	
	ซื้อ	ขาย	สุทธิ	ซื้อ	ขาย	สุทธิ	ซื้อ	ขาย	สุทธิ	ปริมาณ	สถานะคงค้าง
Q3/2023	1,591,663	1,453,252	138,411	594,618	597,486	-2,868	1,889,955	2,025,498	-135,543	4,076,236	591,096
Q2/2023	6,049,238	6,134,886	-85,648	2,352,097	2,346,418	5,679	6,843,677	6,763,708	79,969	15,245,012	678,895
Q1/2023	5,866,721	5,973,951	-107,230	2,457,702	2,420,101	37,601	6,689,756	6,620,127	69,629	15,014,179	435,301
Q4/2022	5,773,579	5,666,820	106,759	2,433,982	2,462,801	-28,819	5,991,792	6,069,732	-77,940	14,199,353	563,223

Metal Futures

หลักทรัพย์	เปิด	สูงสุด	ต่ำสุด	ปิด	เฉลี่ย	ราคาที่ใช้ชำระราคา	เปลี่ยนแปลง	ปริมาณ (สัญญา)	สถานะคงค้าง (สัญญา)
GF10Q23	32,230	32,280	32,130	32,270	32,210	32,260.00	20	3976	7,262
GFQ23	32,170	32,260	32,130	32,250	32,215	32,250.00	30	35	193
GOU23	1,990	1,991	1,977	1,985	1,985	1,984.90	-4	22027	35,971
SVFU23	25	25	25	25	25	25.00	-0.06	106	1,001
GF10V23	32,290	32,380	32,240	32,360	32,306	32,360.00	40	1149	3,947
GFV23	32,270.00	32,350.00	32,240.00	32,350.00	32,318.00	32,360.00	30	72	163
GF10Z23	32,370	32,460	32,340	32,460	32,389	32,460.00	40	242	822
GFZ23	32,360	32,470	32,330	32,460	32,387	32,460.00	20	15	38
GOZ23	2,020	2,022	2,009	2,016	2,015	2,015.20	-4	5618	16,709
SVFZ23	25.21	25.36	25.02	25.36	25.20	25.36	-0.01	57	258

Source : SET Smart

Single Stock Futures

blssk	เปิด	สูงสุด	ต่ำสุด	ปิด	เฉลี่ย	ราคาที่ใช้ชำระ ราคา	เปลี่ยนแปลง	ปริมาณ (สัญญา)	สถานะคงค้าง (สัญญา)
AAVU23	2.55	2.64	2.55	2.61	2.62	2.61	-	11	52,950
ADVANCU23	219.77	219.77	217.8	218.54	217.99	218.52	-0.25	118	2,474
AEONTSU23	159.69	159.69	157.5	159.19	158.79	159.19	-0.5	36	221
AMATAU23	23.75	23.85	23.54	23.54	23.79	23.70	0.35	126	965
AOTU23	70.75	70.75	70.64	70.64	70.73	70.75	-0.16	317	2,704
APU23	12	12.00	12	12.00	12.00	12.00	-0.03	1	1,083
AWCU23	4.32	4.32	4.26	4.28	4.29	4.28	-0.04	529	9,472
BAMU23	10.6	10.60	10.45	10.57	10.55	10.57	-0.06	318	10,361
BANPUU23	9.09	9.11	9.03	9.09	9.08	9.09	0.01	1,822	68,378
BAU23	-	-	-	-	-	14.05	-0.4	500	1,808
BAYU23	-	-	-	-	-	31.46	0.46	-	633
BBLU23	166.31	168.00	165.86	167.99	167.30	167.80	1.95	1,410	6,758
BCHU23	-	-	-	-	-	17.72	-	-	3,887
BCPGU23	9.41	9.63	9.37	9.63	9.42	9.61	-	38	41,488
BCPU23	37.45	37.50	37.37	37.50	37.42	37.50	0.88	420	1,681
BDMSU23	28.85	28.85	28.55	28.55	28.69	28.55	-0.04	7	875
BEAUTYU23	0.52	0.52	0.52	0.52	0.52	0.52	-0.03	1	7,329
BECU23	-	-	-	-	-	7.90	-0.3	-	19,901
BEMU23	8.87	9.02	8.87	9.01	8.99	9.01	0.16	17	4,699
BGRIMU23	36.24	36.66	36.24	36.66	36.42	36.66	0.16	414	3,024
BHU23	215.32	215.32	213.25	214.00	213.72	214.00	-2.75	95	689
BJCU23	-	-	-	-	-	34.23	-	100	978
BLANDU23	0.83	0.83	0.83	0.83	0.83	0.83	-	54	162,464
BLAU23	23.83	23.83	23.6	23.60	23.72	23.60	-0.57	3	4,089
BPPU23	-	-	-	-	-	14.43	0.1	100	2,028
BTSU23	-	-	-	-	-	7.72	0.05	-	6,081
CBGU23	69.8	70.92	69.4	70.90	70.33	70.90	1.1	277	2,999
CENTELU23	-	-	-	-	-	43.91	-0.09	-	1,174
CHGU23	2.87	2.89	2.84	2.89	2.85	2.89	-0.01	15	8,423
CKPU23	3.55	3.55	3.5	3.50	3.52	3.50	-0.06	1,010	5,890
CKU23	21.47	21.48	21.17	21.29	21.38	21.29	0.01	202	1,098
COM7U23	27.46	27.46	27.46	27.46	27.46	27.46	0.01	102	5,799
CPALLU23	62.8	62.87	62	62.43	62.48	62.43	-0.52	701	11,890
CPFU23	19.68	19.74	19.66	19.70	19.68	19.70	0.04	212	20,116
CPNU23	-	-	-	-	-	64.53	0.02	20	1,015
CRCU23	40.7	40.70	40.39	40.39	40.55	40.39	-0.61	102	1,165
DELTAU23X	109.25	110.00	107.9	109.20	108.95	109.20	0.9	89	883
DTACU23X	-	-	-	-	-	6.82	-0.11	-	5
EASTWU23	4.53	4.53	4.5	4.50	4.53	4.60	-	53	665
EAU23	55.5	55.70	55.5	55.70	55.57	55.70	-0.2	245	15,747
EGCOU23	132.01	132.01	124.05	126.99	126.47	126.49	-8.52	238	1,103
EPGU23	-	-	-	-	-	6.53	-0.1	-	1,321
ERWU23	4.44	4.48	4.44	4.48	4.45	4.48	0.08	17	592
ESSOU23	9.23	9.23	9.23	9.23	9.23	9.23	-0.02	1,001	7,840
GFPTU23	11.77	11.77	11.77	11.77	11.77	11.81	-0.1	160	1,129
GLOBALU23X	15.82	15.82	15.82	15.82	15.82	16.22	0.21	113	1,353
GPSCU23	54.7	54.70	54.01	54.40	54.34	54.40	-0.3	520	3,698
GULFU23	48.3	48.39	47.51	48.36	48.04	48.36	-0.09	1,822	9,502
GUNKULU23	3.32	3.32	3.31	3.31	3.32	3.31	-0.05	2,038	111,410
HANAU23	46.72	47.00	46.25	47.00	46.58	47.00	0.31	132	1,330
HMPROU23	13.9	13.90	13.83	13.83	13.87	13.83	-0.17	802	2,713
ICHU23	14.38	14.38	14.33	14.33	14.36	14.33	-0.47	4	6,242
INTUCHU23X	-	-	-	-	-	75.44	1.19	-	281
IRPCU23	2.38	2.39	2.33	2.34	2.36	2.34	0.02	27	10,740
ITDU23	1.39	1.39	1.39	1.39	1.39	1.39	-	1,017	9,738
IVLU23	33.25	33.25	33	33.18	33.12	33.18	0.43	625	8,415
JASU23	1.36	1.40	1.35	1.40	1.37	1.40	0.02	149	59,061

blssk	เปิด	สูงสุด	ต่ำสุด	ปิด	เฉลี่ย	ราคาที่ใช้ชำระ ราคา	เปลี่ยนแปลง	ปริมาณ (สัญญา)	สถานะคงค้าง (สัญญา)
JMTU23	37.5	37.50	37.3	37.50	37.42	37.50	0.45	267	2,737
KBANKU23	125	126.00	124.5	124.90	125.09	124.90	0.1	2,018	7,235
KCEU23	37.84	37.99	37.42	37.99	37.68	37.99	0.02	101	2,269
KEXU23	9.8	9.80	9.65	9.65	9.72	9.65	-0.2	10	2,734
KKPU23	54.28	54.30	53.02	53.68	53.84	53.68	-1.69	291	2,158
KTBU23	20.09	20.19	20.01	20.10	20.11	20.10	0.03	769	23,586
KTCU23	47	47.00	47	47.00	47.00	47.00	0.5	123	55,679
LHU23	-	-	-	-	-	8.47	0.05	-	8,194
LPNU23	-	-	-	-	-	4.16	-	-	193
MAJORU23	-	-	-	-	-	14.71	0.1	-	3,835
MBKU23	-	-	-	-	-	15.62	0.1	-	753
MEGAU23	37.35	37.50	37.35	37.50	37.46	37.50	-0.72	107	755
MINTU23	31.8	32.20	31.7	32.20	31.92	32.20	1.19	1,115	1,783
MTCU23	35.2	35.20	34.79	34.94	35.05	34.94	-0.06	424	4,609
MU23	-	-	-	-	-	45.42	0.01	20	330
ORIU23	10.4	10.40	10.4	10.40	10.40	10.40	-	508	4,859
ORU23	21.3	21.49	21.23	21.49	21.31	21.49	-0.01	206	3,310
OSPU23X	-	-	-	-	-	28.69	-0.01	-	1,091
PLANBU23	8.26	8.26	8.19	8.19	8.21	8.19	-0.18	77	3,613
PRMU23	-	-	-	-	-	6.41	-0.1	-	1,546
PSHU23	-	-	-	-	-	12.88	0.1	-	336
PSLU23	9.09	9.09	9.09	9.09	9.09	9.09	0.03	5	2,410
PTGU23	10.5	10.63	10.32	10.63	10.43	10.63	0.08	312	16,475
PTTEPU23	158.27	159.60	156.9	157.42	157.62	157.26	0.26	1,024	2,230
PTTGCU23	37.1	38.00	37.1	38.00	37.69	37.96	0.99	715	6,489
PTTU23	34.15	34.15	34.14	34.14	34.15	34.14	0.15	1,356	11,348
QHU23	2.24	2.24	2.24	2.24	2.24	2.24	-	1	1,319
RATCHU23	35.6	35.60	33.95	33.95	34.64	34.30	-2.3	330	1,441
RSU23X	14.35	14.50	14.35	14.50	14.43	14.40	0.01	2	25,190
SAMARTU23	-	-	-	-	-	5.77	-0.1	-	8,453
SAWADU23	47	47.07	46.33	46.75	46.80	46.75	-0.12	365	11,469
SCBU23	107.5	107.50	106.52	107.50	107.12	107.50	-0.39	1,198	3,273
SCCU23	315.8	315.80	314	314.00	314.90	314.00	-1.67	162	1,458
SCGPU23	39.25	40.00	39.25	39.85	39.67	39.85	1.26	417	5,050
SGPU23	-	-	-	-	-	8.06	-0.3	-	107
SIRIU23	1.95	1.95	1.92	1.93	1.94	1.93	-	2,725	39,426
SPALIU23	20.36	20.80	20.36	20.80	20.58	20.80	-0.1	2	876
SPCGU23	-	-	-	-	-	12.29	0.1	-	12
SPRCU23	8.34	8.35	8.21	8.21	8.29	8.21	0.1	522	1,202
STAU23	16.27	16.27	15.85	15.96	15.93	15.96	-0.31	8	1,172
STECU23	10.5	10.55	10.4	10.45	10.45	10.47	0.02	841	8,318
STGTU23	7.08	7.08	7.08	7.08	7.08	7.08	0.05	4	2,161
STPIU23	-	-	-	-	-	3.85	-0.02	-	20,566
SU23	-	-	-	-	-	1.22	-	-	5,769
SUPERU23	0.51	0.51	0.51	0.51	0.51	0.51	-0.02	2	33,682
TASCOU23	-	-	-	-	-	17.44	-0.23	-	162
TCAPU23	48.66	48.66	48.66	48.66	48.66	49.16	0.16	3	330
THAIU23	-	-	-	-	-	3.40	-	-	-
THANIU23	-	-	-	-	-	3.16	-0.04	500	6,557
THCOMU23	12.35	12.35	12.35	12.35	12.35	12.35	0.15	2	4,581
THGU23	-	-	-	-	-	68.08	3.25	-	281
TISCOU23	-	-	-	-	-	96.98	0.02	-	66
TKNU23	-	-	-	-	-	11.29	0.05	-	16,303
TOAU23	26.38	27.13	26.38	27.13	27.02	27.13	0.62	7	346
TOPU23	48.85	48.88	48.35	48.35	48.62	48.35	0.88	1,114	1,922
TPIPLU23	-	-	-	-	-	1.43	-0.02	-	1,583
TPIPPU23	-	-	-	-	-	3.31	0.02	-	1,738
TQMU23	24.9	25.19	24.74	25.19	24.79	25.19	-0.2	19	4,817

blssk	เปิด	สูงสุด	ต่ำสุด	ปิด	เฉลี่ย	ราคาที่ใช้ชำระ ราคา	เปลี่ยนแปลง	ปริมาณ (สัญญา)	สถานะคงค้าง (สัญญา)
TRUEEU23X	-	-	-	-	-	6.82	-0.11	-	59
TRUEU23	6.85	6.85	6.75	6.82	6.82	6.82	-0.06	1,041	14,399
TTAU23	-	-	-	-	-	6.33	-0.09	-	1,991
TTBU23	1.66	1.68	1.65	1.65	1.66	1.65	-	4,515	15,737
TTCLU23	-	-	-	-	-	4.16	0.02	-	3,450
TTWU23	-	-	-	-	-	8.52	0.05	-	652
TUU23	12.77	12.77	12.77	12.77	12.77	12.77	0.08	4	11,822
TVOU23	-	-	-	-	-	25.41	-0.25	-	114
UNIQU23	2.8	2.80	2.8	2.80	2.80	2.80	0.01	10	3,041
VGIU23	2.72	2.73	2.72	2.73	2.73	2.73	-0.05	25	5,488
VNGU23	-	-	-	-	-	4.18	-	-	7,162
WHAU23	4.91	4.92	4.89	4.90	4.91	4.90	0.05	23	9,894
Total								42,920	1,191,853

Source : SET Smart

Bualuang Securities Public Company Limited

DISCLAIMER

BUALUANG SECURITIES PUBLIC COMPANY LIMITED (BLS) is a subsidiary of BANGKOK BANK PUBLIC COMPANY LIMITED (BBL). This document is produced based upon sources believed to be reliable but their accuracy, completeness or correctness is not guaranteed. The statements or expressions of opinion herein were arrived at after due and careful consideration to use as information for investment. Expressions of opinion contained herein are subject to change without notice. This document is not, and should not be construed as, an offer or the solicitation of an offer to buy or sell any securities. The use of any information shall be at the sole discretion and risk of the user.

BUALUANG SECURITIES PUBLIC COMPANY LIMITED MAY BE IN RELATIONSHIP WITH THE SECURITIES IN THIS REPORT. "Opinions, projections and other information contained in this report are based upon sources believed to be accurate including the draft prospectus, but no responsibility is accepted for any loss occasioned by reliance placed upon the contents hereof. Bualuang Securities Public Company Limited may from time to time perform investment, advisory or other services for companies mentioned in this report, as well as dealing (as principal or otherwise) in, or otherwise being interested in, any securities mentioned herein, This report does not constitute a solicitation to buy or sell any securities". Investors should carefully read details in the prospectus before making investment decision.






BUALUANG SECURITIES PUBLIC COMPANY LIMITED MAY ACT AS MARKET MAKER AND ISSUER OF DWs, AND ISSUER OF STRUCTURED NOTES ON THESE SECURITIES. The company may prepare the research reports on those underlying securities. Investors should carefully read the details of the derivative warrants and structured notes in the prospectus before making investment decisions.

ADVANC	AMATA	AOT	BDMS	BH	CBG	CENTEL	CPALL	GLOBAL	GPSC	IRPC	KBANK	KCE	KTC	MINT
PTG	PTT	PTTEP	PTTGC	SCB	SFRG	TOP	WHA	STA	BGRIM	GULF	MTC	AWC	CRC	CPF
CPN	HANA	HMPRO	I/L	OSP	SAWAD	BANPU	BCH	BTS	SCC	TU	INTUCH	VGI	SCGP	COM7
DOHOME	JMT	CHG	TTB	BAM	BCP	AP	KTB	KKP	OR	BEM	GUNKUL	EA	RBF	STGT
JMART	BEC	KEX	RCL	SINGER	TIDLOR	FORTH	AAV	DELTA	SABUY	CKP	TRUE	PSL	SIRI	TQM
CK	ERW	MEGA	SNNP	TLI										

BUALUANG SECURITIES PUBLIC COMPANY LIMITED IS OR MAY BE AN UNDERWRITER/CO-UNDERWRITER/JOINT LEAD IN RESPECT OF THE INITIAL PUBLIC OFFERING (IPO) OF SECURITIES.

Financial Advisor	Lead underwriter/ Underwriter/ Co-underwriter
	KCG

CG Rating

Score Range	Score Range	Description
90 – 100		Excellent
80 – 89		Very Good
70 – 79		Good
60 – 69		Satisfactory
50 – 00359		Pass
Less than 50	No logo given	-

Thailand's Private Sector Collective Action Coalition Against Corruption programme (Thai CAC) under Thai Institute of Directors

- companies that have **declared** their intention to join CAC, and
- companies **certified** by CAC.

CORPORATE GOVERNANCE REPORT DISCLAIMER

This research report was prepared by Bualuang Securities Public Company Limited and refers to research prepared by Morgan Stanley. Morgan Stanley does not warrant or guarantee the accuracy or completeness of its research reports. Morgan Stanley reserves copyright and other proprietary rights in the material reproduced in this report. Morgan Stanley is under no obligation to inform Bualuang Securities or you if the views or information referred to or reproduced in this research report change.

Corporate Governance Report disclaimer

The disclosure of the survey result of the Thai Institute of Directors Association (IOD) regarding corporate governance is made pursuant to the policy of the Office of the Securities and Exchange Commission. The IOD survey is based on the information of a company listed on the Stock Exchange of Thailand and the Market for Alternative Investment disclosed to the public and able to be accessed by a general public investor. The result, therefore, is from the perspective of a third party. It is not an evaluation of operation and is not based on inside information.

The survey result is as of the date appearing in the Corporate Governance Report of Thai Listed Companies. As a result, the survey result may be changed after that date. Bualuang Securities Public Company Limited neither confirms nor certifies the accuracy of such survey results.

“Disclaimer: The disclosure of the Anti-Corruption Progress Indicators of a listed company on the Stock Exchange of Thailand, which is assessed by the relevant institution as disclosed by the Office of the Securities and Exchange Commission, is made in order to comply with the policy and sustainable development plan for the listed companies. The relevant institution made this assessment based on the information received from the listed company, as stipulated in the form for the assessment of Anti-corruption which refers to the Annual Registration Statement (Form 56-1), Annual Report (Form 56-2), or other relevant documents or reports of such listed company. The assessment result is therefore made from the perspective of a third party. It is not an assessment of operation and is not based on any inside information. Since this assessment is only the assessment result as of the date appearing in the assessment result, it may be changed after that date or when there is any change to the relevant information. Nevertheless, Bualuang Securities Public Company Limited neither confirms, verifies, nor certifies the accuracy and completeness of the assessment result.”

BUALUANG RESEARCH – RECOMMENDATION FRAMEWORK

STOCK RECOMMENDATIONS

BUY: Expected positive total returns of 15% or more over the next 12 months.

HOLD: Expected total returns of between -15% and +15% over the next 12 months.

SELL: Expected negative total returns of 15% or more over the next 12 months.

TRADING BUY: Expected positive total returns of 15% or more over the next 3 months.

SECTOR RECOMMENDATIONS

OVERWEIGHT: The industry, as defined by the analyst's coverage universe, is expected to outperform the relevant primary market index over the next 12 months.

NEUTRAL: The industry, as defined by the analyst's coverage universe, is expected to perform in line with the relevant primary market index over the next 12 months.

UNDERWEIGHT: The industry, as defined by the analyst's coverage universe, is expected to underperform the relevant primary market index over the next 12 months.

IMPORTANT DISCLOSURES FOR U.S. PERSONS

This research report was prepared by Bualuang Securities Public Company Limited (“BLS”). BLS is not a registered broker-dealer in the United States and, therefore, is not subject to U.S. rules regarding the preparation of research reports and the independence of research analysts. This research report is provided for distribution to “major U.S. institutional investors” in reliance on the exemption from registration provided by Rule 15a-6 of the U.S. Securities Exchange Act of 1934, as amended (the “Exchange Act”).

Under no circumstances should any recipient of this research report effect any transaction to buy or sell securities or related financial instruments through BLS. Rosenblatt Securities Inc. accepts responsibility for the contents of this research report, subject to the terms set out below, to the extent that it is delivered to a U.S. person other than a major U.S. institutional investor.

The analyst whose name appears in this research report is not registered or qualified as a research analyst with the Financial Industry Regulatory Authority (“FINRA”) and may not be an associated person of Rosenblatt Securities Inc. and, therefore, may not be subject to applicable restrictions under FINRA Rules on communications with a subject company, public appearances and trading securities held by a research analyst account.

Additional Disclosures

This research report is for distribution only under such circumstances as may be permitted by applicable law. This research report has no regard to the specific investment objectives, financial situation or particular needs of any specific recipient, even if sent only to a single recipient. This research report is not guaranteed to be a complete statement or summary of any securities, markets, reports or developments referred to in this research report. Neither BLS nor any of its directors, officers, employees or agents shall have any liability, however arising, for any error, inaccuracy or incompleteness of fact or opinion in this research report or lack of care in this research report’s preparation or publication, or any losses or damages which may arise from the use of this research report.

BLS may rely on information barriers, such as “Chinese Walls” to control the flow of information within the areas, units, divisions, groups, or affiliates of BLS.

Investing in any non-U.S. securities or related financial instruments (including ADRs) discussed in this research report may present certain risks. The securities of non-U.S. issuers may not be registered with, or be subject to the regulations of, the U.S. Securities and Exchange Commission. Information on such non-U.S. securities or related financial instruments may be limited. Foreign companies may not be subject to audit and reporting standards and regulatory requirements comparable to those in effect within the United States.

The value of any investment or income from any securities or related financial instruments discussed in this research report denominated in a currency other than U.S. dollars is subject to exchange rate fluctuations that may have a positive or adverse effect on the value of or income from such securities or related financial instruments.

Past performance is not necessarily a guide to future performance and no representation or warranty, express or implied, is made by BLS with respect to future performance. Income from investments may fluctuate. The price or value of the investments to which this research report relates, either directly or indirectly, may fall or rise against the interest of investors. Any recommendation or opinion contained in this research report may become outdated as a consequence of changes in the environment in which the issuer of the securities under analysis operates, in addition to changes in the estimates and forecasts, assumptions and valuation methodology used herein.

No part of the content of this research report may be copied, forwarded or duplicated in any form or by any means without the prior consent of BLS and BLS accepts no liability whatsoever for the actions of third parties in this respect.