

TFEX Daily

28 มีนาคม 2566

S50M23

แผนเดิม.....ฝั่งชื้อทยอยขายทำกำไรโซนต้าน"

Gold spot

แผนเทรด.....ขายไปแล้ว และรอรับกลับ!

"แผนเทรด.....ทะลุโซนต้าน เส้น BB"

S50M23

"รื้อนแรง V-shape ชนต้าน"

มุมมอง: ดัชนีรื้อนแรง V-shape ปัจจุบันเข้าใกล้โซนต้านบริเวณ 960-965 จุดขณะที่ RSI และ 50 เริ่มชะลอ

แผนเดิม.....ฝั่งชื้อทยอยขายโซนต้าน (ขายก่อนแล้วรอชื้อกลับ) ในทางตรงข้ามสถานะ:ขายและรอเปิดสถานะบริเวณโซนต้าน

Note:เนื่องจากตลาด TFEX มีความผันผวนมาก หากขาดทุนมากกว่า 10% ของพอร์ต แนะนำปิดสถานะ

"แผนเทรด....ขายไปแล้ว และรอรับกลับ"

Gold spot

จับสัญญาณเทรด...ทองคำ

มุมมอง: Gold spot ขึ้นทดสอบ high บริเวณ \$2,000/ออนซ์ แล้วเริ่มย่อ! ขณะที่เครื่องมือวัดโมเมนตัม RSI ปรับลงภายหลังเข้าสู่เขตแดน overbought "ภาวะชื้อมากเกินไป"

แผนเทรด....ขายก่อนแล้วรอรับกลับ ได้ผล! และรอชื้อบริเวณโซนรับระยะสั้นปัดหัว \$1950/ออนซ์ ในทางตรงข้ามสถานะขายมีอยู่และรอปิดบริเวณโซนรับ Note:ปิดความเสี่ยงหากผลตอบแทนติดลบมากกว่า 10% ของพอร์ต

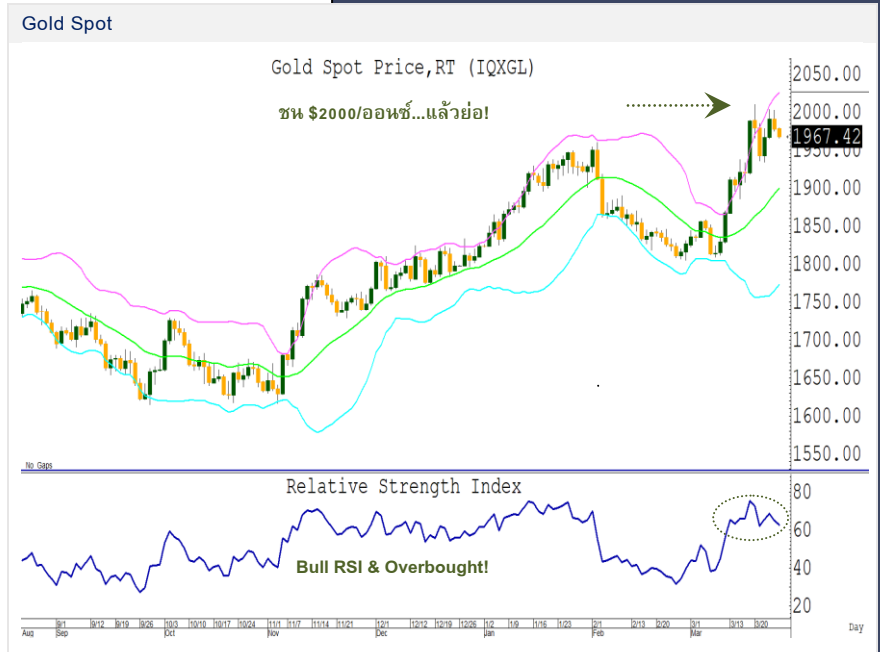
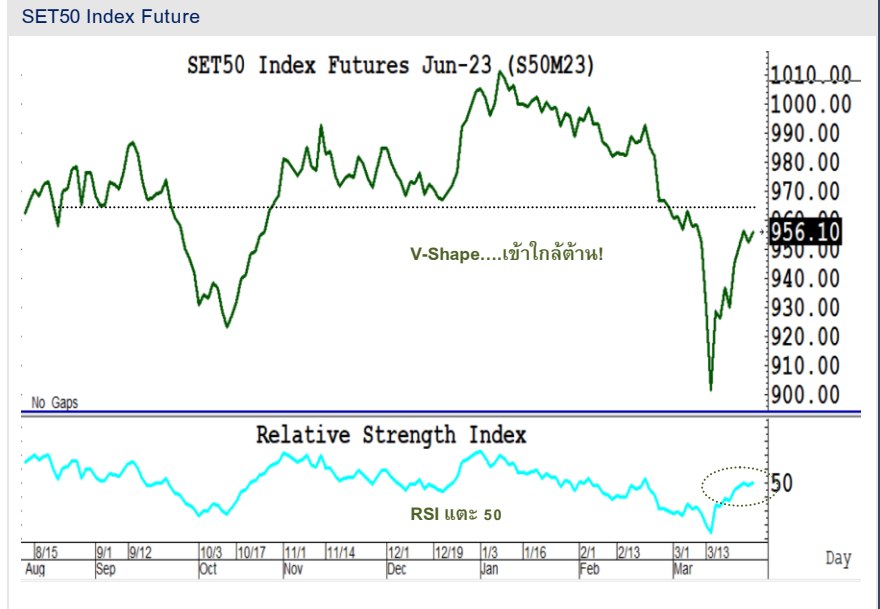
S50M23: รับ 945 ต้าน 960-965

GFJ23: รับ 31,500 ต้าน 33,000

มุมมองทางเทคนิค โดย คุณธนรัตน์ อิศรกุล
นักวิเคราะห์การลงทุนปัจจัยพื้นฐานด้านหลักทรัพย์และปัจจัยทางเทคนิค

Thanarut@bualuang.co.th

Tel. (662) 618-1334



วิกิจ ถาวรรัตนรัตน์

นักวิเคราะห์การลงทุนปัจจัยพื้นฐานด้านตลาดทุน/ปัจจัยทางเทคนิค

Wikij.tir@bualuang.co.th Tel. (662) 618-1336

หลักทรัพย์	เปิด	สูงสุด	ต่ำสุด	ปิด	เฉลี่ย	ราคาที่ใช้ชำระ ราคา	เปลี่ยนแปลง	ปริมาณ (สัญญา)	สถานะคงค้าง (สัญญา)
SET50	962.18	962.91	956.06	960.01	960.29	N/A	-0.4	N/A	N/A
S50H23	958.00	962.50	956.5	959.90	959.30	959.70	3.9	163,438	416,666
S50J23	960	960.80	955.8	956.00	958.20	957.10	0.9	16	144
S50K23	958.3	958.50	955.6	956.40	957.10	956.40	2.7	9	181
S50M23	955.6	959.00	953.1	956.40	955.90	956.10	3.6	157,010	225,432
S50U23	951.8	955.80	949.8	953.00	952.70	953.00	4.1	8,789	35,297
S50Z23	951.4	955.50	949.7	952.80	952.50	952.70	3.8	2,819	18,873
Total								332,081	696,593

Source : SET Smart

Trading by Investor Type - SET50 Index Futures

5 วันย้อนหลัง

วันที่	นักลงทุนต่างประเทศ ปริมาณ			นักลงทุนสถาบัน ปริมาณ			นักลงทุนภายในประเทศ ปริมาณ			รวม	
	ซื้อ	ขาย	สุทธิ	ซื้อ	ขาย	สุทธิ	ซื้อ	ขาย	สุทธิ	ปริมาณ	สถานะคงค้าง
27/03/2023	223,750	222,991	759	34,934	34,598	336	73,397	74,492	-1,095	332,081	696,593
24/03/2023	136,991	137,148	-157	45,801	47,717	-1,916	100,759	98,686	2,073	283,551	631,571
23/03/2023	118,437	94,127	24,310	39,096	42,719	-3,623	110,261	130,948	-20,687	267,794	620,302
22/03/2023	78,188	68,624	9,564	47,510	44,753	2,757	86,835	99,156	-12,321	212,533	614,537
21/03/2023	114,256	101,283	12,973	46,508	52,778	-6,270	119,727	126,430	-6,703	280,491	618,701

4 เดือนย้อนหลัง

วันที่	นักลงทุนต่างประเทศ ปริมาณ			นักลงทุนสถาบัน ปริมาณ			นักลงทุนภายในประเทศ ปริมาณ			รวม	
	ซื้อ	ขาย	สุทธิ	ซื้อ	ขาย	สุทธิ	ซื้อ	ขาย	สุทธิ	ปริมาณ	สถานะคงค้าง
มี.ค. 2023	2,356,682	2,303,444	53,238	954,658	926,987	27,671	2,382,208	2,463,117	-80,909	5,693,548	696,593
ก.พ. 2023	1,468,424	1,592,263	-123,839	668,550	650,734	17,816	2,019,686	1,913,663	106,023	4,156,660	664,829
ม.ค. 2023	1,346,543	1,446,322	-99,779	678,348	675,116	3,232	1,994,379	1,897,832	96,547	4,019,270	673,734
ธ.ค. 2022	2,179,936	2,239,881	-59,945	738,467	749,419	-10,952	1,946,510	1,875,613	70,897	4,864,913	563,223

4 ไตรมาสย้อนหลัง

วันที่	นักลงทุนต่างประเทศ ปริมาณ			นักลงทุนสถาบัน ปริมาณ			นักลงทุนภายในประเทศ ปริมาณ			รวม	
	ซื้อ	ขาย	สุทธิ	ซื้อ	ขาย	สุทธิ	ซื้อ	ขาย	สุทธิ	ปริมาณ	สถานะคงค้าง
Q1/ 2023	5,171,649	5,342,029	-170,380	2,301,556	2,252,837	48,719	6,396,273	6,274,612	121,661	13,869,478	696,593
Q4/ 2022	5,773,579	5,666,820	106,759	2,433,982	2,462,801	-28,819	5,991,792	6,069,732	-77,940	14,199,353	563,223
Q3/ 2022	6,188,060	6,186,241	1,819	2,707,073	2,714,363	-7,290	6,950,031	6,944,560	5,471	15,845,164	495,136
Q2/ 2022	4,663,806	4,722,909	-59,103	2,045,996	2,038,871	7,125	5,380,581	5,328,603	51,978	12,090,383	414,186

Source : SET Smart

Metal Futures

หลักทรัพย์	เปิด	สูงสุด	ต่ำสุด	ปิด	เฉลี่ย	ราคาที่ใช้ชำระ ราคา	เปลี่ยนแปลง	ปริมาณ (สัญญา)	สถานะคงค้าง (สัญญา)
GOH23	1,996	2,005	1,959	1,960	1,986	1,960.00	-34.1	13996	8,746
SVFH23	23	24	23	23	23	22.98	-0.19	149	428
GF10J23	32,340	32,560	32,060	32,100	32,269	32,090.00	-230	4578	5,521
GFJ23	32,340	32,340	32,130	32,130	32,177	32,130.00	-190	21	209
GF10M23	32,420	32,640	32,160	32,160	32,352	32,170.00	-240	2880	6,965
GFM23	32,420.00	32,420.00	32,160.00	32,160.00	32,263.00	32,160.00	-250	34	203
GOM23	2,023	2,032	1,986	1,988	2,013	1,987.70	-33.6	34862	12,674
SVFM23	24	24	23	23	24	23.37	-0.26	190	788
GF10Q23	32,500	32,710	32,240	32,280	32,431	32,280.00	-200	953	2,056
GFQ23	32,550.00	32,600.00	32,250.00	32,310.00	32,366.00	32,310.00	-180	38	82

Source : SET Smart

Single Stock Futures

blssk	เปิด	สูงสุด	ต่ำสุด	ปิด	เฉลี่ย	ราคาที่ใช้ชำระ ราคา	เปลี่ยนแปลง	ปริมาณ (สัญญา)	สถานะคงค้าง (สัญญา)
AAVH23	2.78	2.80	2.76	2.78	2.78	2.78	0.06	14	5,792
ADVANCH23	212	212.25	210	212.00	211.19	212.00	-1	626	894
AEONTS23	-	-	-	-	-	180.98	-1.75	70	52
AMATAH23	22.42	22.42	22.27	22.27	22.37	22.27	0.18	3	562
AOTH23	71.52	72.00	71.5	71.64	71.55	71.64	0.1	250	1,536
APH23	11.98	11.98	11.92	11.92	11.95	11.92	0.03	2	50
AWCH23	5.57	5.67	5.57	5.67	5.60	5.67	0.05	31	1,214
BAH23	13.13	13.13	13.13	13.13	13.13	13.13	0.33	1	1,602
BAMH23	13.7	13.70	13.6	13.63	13.65	13.63	-	886	4,338
BANPUH23	10.81	10.90	10.81	10.84	10.86	10.84	-0.05	1,768	10,029
BAYH23	-	-	-	-	-	28.75	-0.24	-	34
BBLH23	153.5	153.50	151.77	152.05	152.11	152.05	-1.13	260	182
BCHH23	-	-	-	-	-	19.80	-0.09	200	577
BCPGH23	9.95	9.95	9.95	9.95	9.95	9.95	0.1	218	1,439
BCPH23	31.15	31.15	31.15	31.15	31.15	31.15	-0.1	201	136
BDMH23	-	-	-	-	-	29.25	0.05	100	1,323
BEAUTYH23	-	-	-	-	-	1.23	-0.04	-	27,341
BECH23	-	-	-	-	-	8.60	-0.14	100	77
BEMH23	8.64	8.70	8.61	8.70	8.66	8.70	0.1	210	1,989
BGRIMH23	39.95	39.95	39.95	39.95	39.95	39.95	-0.45	101	1,117
BHH23	216	216.00	216	216.00	216.00	216.00	-	161	329
BJCH23	38.75	39.24	38.75	38.92	39.01	38.92	0.5	233	38
BLAH23	-	-	-	-	-	28.25	-0.5	239	410
BLANDH23	1	1.00	1	1.00	1.00	1.00	0.01	4,003	10,721
BPPH23	15.37	15.37	15.37	15.37	15.37	15.40	-0.19	101	269
BTSH23	7.18	7.18	7.05	7.05	7.15	7.05	-0.15	2,535	3,469
CBGH23	98.79	98.79	98	98.25	98.30	98.25	-0.75	116	1,142
CENTELH23	57	57.50	57	57.47	57.23	57.51	0.51	5	466
CHGH23	3.58	3.58	3.58	3.58	3.58	3.60	-0.06	1	1,598
CKH23	-	-	-	-	-	20.10	0.14	-	352
CKPH23	4.14	4.14	4.14	4.14	4.14	4.14	0.03	501	2,370
COM7H23	31.25	31.50	31.25	31.50	31.33	31.50	0.3	806	2,966
CPALLH23	62.8	62.82	62.59	62.80	62.65	62.80	-0.05	439	798
CPFH23	-	-	-	-	-	21.70	-0.25	4,600	4,412
CPNH23	68.07	68.07	67.75	67.75	67.88	67.75	-0.84	123	64
CRCH23	-	-	-	-	-	45.50	-0.26	-	29
DELTAH23	990	993.98	988	990.00	990.80	992.00	0.44	52	1,210
DTACH23X	8.5	8.50	8.5	8.50	8.50	8.50	-	1	1,842
EAH23	75.48	75.50	75.25	75.25	75.37	75.25	-0.5	277	4,636
EASTWH23	-	-	-	-	-	4.94	-0.02	-	3
EGCOH23	-	-	-	-	-	155.97	-1.72	60	233
EPGH23	-	-	-	-	-	8.10	-0.1	1,000	1,076
ERWH23	-	-	-	-	-	5.05	-	-	3,039
ESSOH23	8.9	8.90	8.73	8.73	8.79	8.73	-	524	9,803
GFP23	11.42	11.42	11.42	11.42	11.42	11.30	-0.1	8	5,894
GLOBALH23X	-	-	-	-	-	19.00	0.6	100	336
GPSCH23	68.99	69.35	68.74	68.80	69.12	68.80	0.14	528	888
GULFH23	53.4	53.40	53.4	53.40	53.40	53.40	0.01	3,022	5,663
GUNKULH23	3.84	3.87	3.84	3.87	3.84	3.87	-	12,090	17,474
HANAH23	51.2	51.20	50.05	50.05	50.75	50.05	-0.26	83	177
HMPROH23	-	-	-	-	-	14.40	-0.01	100	570
ICHIH23	-	-	-	-	-	13.20	-0.09	-	9,334
INTUCHH23X	-	-	-	-	-	74.47	0.28	40	28
IRPCH23	2.62	2.62	2.62	2.62	2.62	2.60	-0.02	1,015	7,770
ITDH23	1.59	1.59	1.59	1.59	1.59	1.59	-0.01	24	6,076
IVLH23	-	-	-	-	-	34.74	-0.71	2,120	3,556
JASH23	-	-	-	-	-	2.08	-0.05	3,500	69,008

blssk	เปิด	สูงสุด	ต่ำสุด	ปิด	เฉลี่ย	ราคาที่ใช้ชำระ ราคา	เปลี่ยนแปลง	ปริมาณ (สัญญา)	สถานะคงค้าง (สัญญา)
JMTH23	46.25	47.00	45.75	46.98	46.74	46.98	-0.02	293	604
KBANKH23	131.5	132.39	131.2	132.39	131.84	132.60	0.6	473	2,573
KCEH23	46	46.55	45.65	46.24	46.06	46.23	0.73	200	1,239
KEXH23	15.73	15.73	15.73	15.73	15.73	15.73	-0.08	987	1,388
KKPH23	65.08	65.08	64.51	64.51	64.53	64.51	-0.49	346	886
KTBH23	16.8	16.90	16.76	16.83	16.82	16.83	-0.09	118	5,410
KTCH23	54.25	54.25	54	54.00	54.16	54.00	-0.3	45	28,568
LHH23	-	-	-	-	-	9.75	0.16	500	87
LPNH23	4.7	4.70	4.7	4.70	4.70	4.70	0.01	100	677
MAJORH23	16.8	16.80	16.8	16.80	16.80	16.80	0.1	701	3,017
MBKH23	16	16.00	16	16.00	16.00	16.00	-0.19	203	615
MEGAH23	42.42	42.42	41.42	41.42	41.92	41.42	-1.32	2	80
MH23	51.6	51.60	51.6	51.60	51.60	51.60	-0.1	21	103
MINTH23	32.47	32.59	32.35	32.55	32.55	32.55	-0.41	1,026	1,506
MTCH23	33.88	34.18	33.88	34.10	33.99	34.10	0.01	1,336	1,495
ORH23	21.22	21.22	21.01	21.01	21.08	21.01	-	603	1,849
ORIH23	11.77	11.77	11.77	11.77	11.77	11.77	0.07	2	614
OSPH23	31.81	31.81	31.81	31.81	31.81	31.81	-	303	1,333
PLANBH23	-	-	-	-	-	8.60	-0.05	-	602
PRMH23	-	-	-	-	-	7.35	0.1	1,000	2,643
PSHH23	-	-	-	-	-	12.69	-	-	234
PSLH23	13.79	13.79	13.71	13.71	13.75	13.71	-0.26	310	539
PTGH23	14	14.00	14	14.00	14.00	14.00	0.02	101	3,141
PTTEPH23	143	143.50	143	143.50	143.21	143.50	1.05	112	555
PTTGCH23	46.31	46.32	46.31	46.32	46.32	46.10	0.04	283	2,424
PTTH23	31.34	31.34	31	31.00	31.22	31.00	-0.25	516	3,624
QHH23	-	-	-	-	-	2.40	-	-	461
RATCHH23X	-	-	-	-	-	38.49	-0.24	-	1,392
RSH23	-	-	-	-	-	15.20	0.03	1,400	7,095
SAMARTH23	4.51	4.51	4.51	4.51	4.51	4.51	-0.05	2,008	1,098
SAWADH23	51	51.30	51	51.05	51.13	51.05	0.55	142	198
SCBBH23	-	-	-	-	-	101.46	-0.96	-	86
SCBH23	102.55	102.55	102.05	102.20	102.22	102.20	-0.35	1,169	2,423
SCCH23	-	-	-	-	-	318.98	0.02	20	650
SCGPH23	46.9	47.38	46.9	47.38	47.04	47.25	0.55	147	1,617
SGPH23	-	-	-	-	-	9.05	-	100	46
SH23	-	-	-	-	-	1.77	-0.04	2,000	741
SIRIH23	1.66	1.66	1.66	1.66	1.66	1.66	-0.02	8,013	9,041
SPALIH23	22.35	22.35	22.35	22.35	22.35	22.35	1	1	280
SPCGH23	-	-	-	-	-	13.69	0.1	-	17
SPRCH23	-	-	-	-	-	10.79	0.21	500	63
STAH23	21.75	21.75	21.64	21.64	21.70	21.64	-0.03	102	195
STECH23	12.5	12.63	12.42	12.49	12.51	12.49	-0.09	1,486	1,753
STGTH23	10.57	10.57	10.44	10.44	10.45	10.44	-0.23	823	1,697
STPIH23	-	-	-	-	-	4.02	-0.02	6,500	18,788
SUPERH23	0.6	0.60	0.59	0.59	0.60	0.59	0.02	4,011	15,765
TASCOH23	19.9	19.90	19.7	19.70	19.73	19.70	-0.2	108	464
TCAPH23	-	-	-	-	-	44.48	0.27	200	13
THAIH23	-	-	-	-	-	3.33	-	-	-
THANIH23	-	-	-	-	-	3.60	-	-	1,144
THCOMH23	13.82	14.32	13.82	14.30	14.06	14.30	0.4	1,040	2,265
THGH23	-	-	-	-	-	68.50	-0.25	-	12
TISCOH23	-	-	-	-	-	100.95	0.55	-	169
TKNH23	-	-	-	-	-	9.85	-0.05	2,226	14,685
TOAH23	31	31.00	31	31.00	31.00	31.00	-0.84	2	655
TOPH23	52.19	52.19	52.19	52.19	52.19	52.19	0.54	169	135
TPIPLH23	1.59	1.59	1.59	1.59	1.59	1.60	0.01	10	4,039
TPIPPH23	-	-	-	-	-	3.40	-0.02	-	1,529
TQMH23	33.8	34.50	33.43	34.50	33.82	34.50	1.51	967	1,097

blssk	เปิด	สูงสุด	ต่ำสุด	ปิด	เฉลี่ย	ราคาที่ใช้ชำระ ราคา	เปลี่ยนแปลง	ปริมาณ (สัญญา)	สถานะคงค้าง (สัญญา)
TRUEEH23X	8.56	8.56	8.56	8.56	8.56	8.56	0.01	1	14,750
TRUEH23	8.51	8.53	8.5	8.53	8.51	8.53	-	504	1,209
TTAH23	7.89	7.89	7.84	7.84	7.88	7.85	-0.04	518	821
TTBH23	1.38	1.39	1.38	1.38	1.39	1.38	-	4,014	5,169
TTCLH23	-	-	-	-	-	4.42	0.02	-	26
TTWH23	-	-	-	-	-	8.65	0.16	-	277
TUH23	14.61	14.65	14.6	14.65	14.61	14.65	0.05	1,168	3,478
TVOH23X	-	-	-	-	-	26.75	0.01	-	147
UNIQH23	-	-	-	-	-	3.82	-0.02	-	615
VGIH23	3.86	3.86	3.86	3.86	3.86	3.86	-0.09	1,008	1,530
VNGH23	-	-	-	-	-	5.00	-0.05	-	81
Total								94,425	430,373

Source : SET Smart

BUALUANG SECURITIES PUBLIC COMPANY LIMITED (BLS) is a subsidiary of BANGKOK BANK PUBLIC COMPANY LIMITED (BBL). This document is produced based upon sources believed to be reliable but their accuracy, completeness or correctness is not guaranteed. The statements or expressions of opinion herein were arrived at after due and careful consideration to use as information for investment. Expressions of opinion contained herein are subject to change without notice. This document is not, and should not be construed as, an offer or the solicitation of an offer to buy or sell any securities. The use of any information shall be at the sole discretion and risk of the user.

BUALUANG SECURITIES PUBLIC COMPANY LIMITED MAY BE IN RELATIONSHIP WITH THE SECURITIES IN THIS REPORT. "Opinions, projections and other information contained in this report are based upon sources believed to be accurate including the draft prospectus, but no responsibility is accepted for any loss occasioned by reliance placed upon the contents hereof. Bualuang Securities Public Company Limited may from time to time perform investment, advisory or other services for companies mentioned in this report, as well as dealing (as principal or otherwise) in, or otherwise being interested in, any securities mentioned herein, This report does not constitute a solicitation to buy or sell any securities". Investors should carefully read details in the prospectus before making investment decision.






BUALUANG SECURITIES PUBLIC COMPANY LIMITED MAY ACT AS MARKET MAKER AND ISSUER OF DWs, AND ISSUER OF STRUCTURED NOTES ON THESE SECURITIES. The company may prepare the research reports on those underlying securities. Investors should carefully read the details of the derivative warrants and structured notes in the prospectus before making investment decisions.

ADVANC	AMATA	AOT	BDMS	BH	CBG	CENTEL	CPALL	GLOBAL	GPSC	IRPC	KBANK	KCE	KTC	MINT
PTG	PTT	PTTEP	PTTGC	SCB	SPRC	TOP	WHA	ESSO	STA	BGRIM	GULF	MTC	AWC	CRC
CPF	CPN	HANA	HMPRO	IVL	OSP	SAWAD	BANPU	BCH	BTS	CK	SCC	STEC	TISCO	TU
INTUCH	RATCH	VGI	SCGP	COM7	DOHOME	JMT	CHG	TTB	BAM	BCP	AP	KTB	KKP	OR
BEM	GUNKUL	EA	SPALI	RBF	STGT	MEGA	JMART	BEC	SYNEX	BLA	KEX	RCL	SINGER	STARK
TIDLOR	FORTH	TIPH	AAV	DELTA	BCPG	SABUY	THG	CKP	TRUE	PSL				

BUALUANG SECURITIES PUBLIC COMPANY LIMITED IS OR MAY BE AN UNDERWRITER/CO-UNDERWRITER/JOINT LEAD IN RESPECT OF THE INITIAL PUBLIC OFFERING (IPO) OF SECURITIES.

Financial Advisor	Lead underwriter/ Underwriter/ Co-underwriter

CG Rating

Score Range	Score Range	Description
90 – 100		Excellent
80 – 89		Very Good
70 – 79		Good
60 – 69		Satisfactory
50 – 00359		Pass
Less than 50	No logo given	-

Thailand's Private Sector Collective Action Coalition Against Corruption programme (Thai CAC) under Thai Institute of Directors

- companies that have **declared** their intention to join CAC, and
- companies **certified** by CAC.

This research report was prepared by Bualuang Securities Public Company Limited and refers to research prepared by Morgan Stanley. Morgan Stanley does not warrant or guarantee the accuracy or completeness of its research reports. Morgan Stanley reserves copyright and other proprietary rights in the material reproduced in this report. Morgan Stanley is under no obligation to inform Bualuang Securities or you if the views or information referred to or reproduced in this research report change.

Corporate Governance Report disclaimer

The disclosure of the survey result of the Thai Institute of Directors Association (IOD) regarding corporate governance is made pursuant to the policy of the Office of the Securities and Exchange Commission. The IOD survey is based on the information of a company listed on the Stock Exchange of Thailand and the Market for Alternative Investment disclosed to the public and able to be accessed by a general public investor. The result, therefore, is from the perspective of a third party. It is not an evaluation of operation and is not based on inside information.

The survey result is as of the date appearing in the Corporate Governance Report of Thai Listed Companies. As a result, the survey result may be changed after that date. Bualuang Securities Public Company Limited neither confirms nor certifies the accuracy of such survey results.

“Disclaimer: The disclosure of the Anti-Corruption Progress Indicators of a listed company on the Stock Exchange of Thailand, which is assessed by the relevant institution as disclosed by the Office of the Securities and Exchange Commission, is made in order to comply with the policy and sustainable development plan for the listed companies. The relevant institution made this assessment based on the information received from the listed company, as stipulated in the form for the assessment of Anti-corruption which refers to the Annual Registration Statement (Form 56-1), Annual Report (Form 56-2), or other relevant documents or reports of such listed company. The assessment result is therefore made from the perspective of a third party. It is not an assessment of operation and is not based on any inside information. Since this assessment is only the assessment result as of the date appearing in the assessment result, it may be changed after that date or when there is any change to the relevant information. Nevertheless, Bualuang Securities Public Company Limited neither confirms, verifies, nor certifies the accuracy and completeness of the assessment result.”

BUALUANG RESEARCH – RECOMMENDATION FRAMEWORK

STOCK RECOMMENDATIONS

BUY: Expected positive total returns of 15% or more over the next 12 months.

HOLD: Expected total returns of between -15% and +15% over the next 12 months.

SELL: Expected negative total returns of 15% or more over the next 12 months.

TRADING BUY: Expected positive total returns of 15% or more over the next 3 months.

SECTOR RECOMMENDATIONS

OVERWEIGHT: The industry, as defined by the analyst's coverage universe, is expected to outperform the relevant primary market index over the next 12 months.

NEUTRAL: The industry, as defined by the analyst's coverage universe, is expected to perform in line with the relevant primary market index over the next 12 months.

UNDERWEIGHT: The industry, as defined by the analyst's coverage universe, is expected to underperform the relevant primary market index over the next 12 months.

IMPORTANT DISCLOSURES FOR U.S. PERSONS

This research report was prepared by Bualuang Securities Public Company Limited (“BLS”). BLS is not a registered broker-dealer in the United States and, therefore, is not subject to U.S. rules regarding the preparation of research reports and the independence of research analysts. This research report is provided for distribution to “major U.S. institutional investors” in reliance on the exemption from registration provided by Rule 15a-6 of the U.S. Securities Exchange Act of 1934, as amended (the “Exchange Act”).

Under no circumstances should any recipient of this research report effect any transaction to buy or sell securities or related financial instruments through BLS. Rosenblatt Securities Inc. accepts responsibility for the contents of this research report, subject to the terms set out below, to the extent that it is delivered to a U.S. person other than a major U.S. institutional investor.

The analyst whose name appears in this research report is not registered or qualified as a research analyst with the Financial Industry Regulatory Authority (“FINRA”) and may not be an associated person of Rosenblatt Securities Inc. and, therefore, may not be subject to applicable restrictions under FINRA Rules on communications with a subject company, public appearances and trading securities held by a research analyst account.

Additional Disclosures

This research report is for distribution only under such circumstances as may be permitted by applicable law. This research report has no regard to the specific investment objectives, financial situation or particular needs of any specific recipient, even if sent only to a single recipient. This research report is not guaranteed to be a complete statement or summary of any securities, markets, reports or developments referred to in this research report. Neither BLS nor any of its directors, officers, employees or agents shall have any liability, however arising, for any error, inaccuracy or incompleteness of fact or opinion in this research report or lack of care in this research report’s preparation or publication, or any losses or damages which may arise from the use of this research report.

BLS may rely on information barriers, such as “Chinese Walls” to control the flow of information within the areas, units, divisions, groups, or affiliates of BLS.

Investing in any non-U.S. securities or related financial instruments (including ADRs) discussed in this research report may present certain risks. The securities of non-U.S. issuers may not be registered with, or be subject to the regulations of, the U.S. Securities and Exchange Commission. Information on such non-U.S. securities or related financial instruments may be limited. Foreign companies may not be subject to audit and reporting standards and regulatory requirements comparable to those in effect within the United States.

The value of any investment or income from any securities or related financial instruments discussed in this research report denominated in a currency other than U.S. dollars is subject to exchange rate fluctuations that may have a positive or adverse effect on the value of or income from such securities or related financial instruments.

Past performance is not necessarily a guide to future performance and no representation or warranty, express or implied, is made by BLS with respect to future performance. Income from investments may fluctuate. The price or value of the investments to which this research report relates, either directly or indirectly, may fall or rise against the interest of investors. Any recommendation or opinion contained in this research report may become outdated as a consequence of changes in the environment in which the issuer of the securities under analysis operates, in addition to changes in the estimates and forecasts, assumptions and valuation methodology used herein.

No part of the content of this research report may be copied, forwarded or duplicated in any form or by any means without the prior consent of BLS and BLS accepts no liability whatsoever for the actions of third parties in this respect.