



**Market Timing (P.M.)**

29 September 2023

**Support:** 1470-1475, 1460

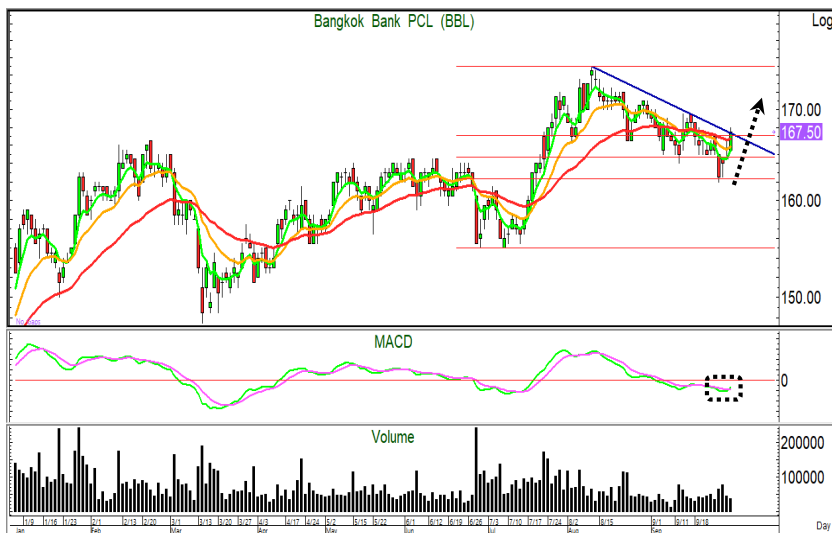
**Resistance:** 1490, 1500

**Technical analyst**  
เปรมสุข ชลทนานวณิชย์  
**Technical analyst**  
ชาญเดช หลีศรีรัตน์



SET เคลื่อนไหวอยู่ระหว่าง 1473-1484 ในขณะที่ ปิดตลาดช่วงเช้าอยู่ที่ระดับ 1476.63 จุด ลดลง 5.51 จุด หรือ -0.37% ด้วยมูลค่าซื้อขายรวม 4.44 หมื่นล้านบาท.

ขณะนี้ SET ได้อ่อนแรงลงเข้าหาระดับแนวรองรับบริเวณ 1470-1475 ด้านสัญญาณของ RSI ระดับชั่วโมง แกว่งตัวในโซนต่ำ จึงประเมินบายนี้ SET อาจยังแกว่งตัวผันผวนออกด้านข้างมากกว่าที่จะเห็นถอยตัวลงต่อเนื่อง โดยมีระดับแนวรองรับแรกทีบริเวณ 1470-1475 และมีระดับแนวรองรับถัดไปที่บริเวณ 1460 ซึ่งยังให้น้ำหนักไม่หลุดแนวรับแรกมากกว่า ขณะที่ด้านแนวต้านแรกอยู่ที่บริเวณ 1490 และมีระดับแนวต้านถัดไปที่บริเวณ 1500 ตามลำดับ



**BBL** ภาพระดับวัน ราคาได้อ่อนแรงลงเข้าหาแนวรองรับบริเวณเชิงวงการวัดบริเวณ 61.8% จากนั้นจึงเริ่มเต็งตัววกกลับข้ามผ่านแนวเส้นกค พร้อมด้วย vol ที่เพิ่มสูงขึ้น ด้านสัญญาณของ MACD เริ่มยกตัวขึ้นเหนือ Signal line สร้างโอกาสที่ราคาจะสามารถยกตัวขึ้นต่อ แนะนำซื้อเก็งกำไร โดยมีเป้าหมายการทำกำไรที่บริเวณ 171 และ 175 ขณะที่ใช้การถอยตัวหลุด 165 เป็น stop loss

Disclaimers: The information, statements, forecasts and projections contained herein, including any expression of opinion, are based upon sourced believed to be reliable but their accuracy completeness or correctness are not guaranteed. Expressions of opinion herein were arrived at after due and careful consideration and they were based upon the best information then known to us, and in our opinion are fair and reasonable in the circumstances prevailing at the time. Expressions of opinion contained herein are subject to change without notice. Kasikorn Securities Public Company Limited also may be the issuer of structured notes on the securities which are the constituents of SET50 index.



## Analyst Certification

The views expressed in this research report accurately reflect the personal views of the analyst(s) about the subject security(ies) and subject company(ies); and no part of the compensation of the research analyst(s) was, is, or will be, directly or indirectly, related to the specific recommendations or views expressed in the report.

## Investment Ratings

Outperform: Expected total return of 10% or more within a 12-month period

Neutral: Expected total return between -10% and 10% within a 12-month period

Underperform: Expected total return of -10% or worse within a 12-month period

## General Disclaimer

This document is prepared by Kasikorn Securities Public Company Limited (“KS”). This document has been prepared for individual clients of KS only and must not, either in whole or in part, be copied, photocopied or duplicated in any form or by any means or distributed to any other person. If you are not the intended recipient you must not use or disclose the information in this research in any way. If you received it in error, please immediately notify KS by return e-mail and delete the document. We do not guarantee the integrity of any e-mails or attached files and are not responsible for any changes made to them by any other person.

This document, including information, data, statements, forecasts, analysis and projections contained herein, including any expression of opinion, is based on public available information or information obtained from sources believed to be reliable, but KS does not make any representation or warranty on, assumes no responsibilities for nor guarantees the accuracy, completeness, correctness or timeliness of such information. KS accepts no obligation to correct or update the information or opinions in it. The statements or expressions of opinion herein were arrived at after due and careful consideration and they were based upon such information or sources then, and in our opinion are fair and reasonable in the circumstances prevailing at the time. The information or expressions of opinion contained herein are subject to change without notice.

Nothing in this document shall be construed as an offer or a solicitation of an offer to buy or sell any securities or products, or to engage in or refrain from engaging in any transaction. In preparing this document, KS did not take into account your specific investment objectives, financial situation or particular needs. This document is for your information only and is not to be taken in substitution for the exercise of your judgment. KS salespeople, traders and other professionals may provide oral or written market commentary or trading strategies to our clients that reflect opinions which are contrary to the opinions expressed in this document. Before making an investment decision on the basis of this document, you should obtain independent financial, legal or other advice and consider the appropriateness of investment in light of your particular investment needs, objectives and financial circumstances. There are risks involved in the investment in securities. KS accepts no liability whatsoever for any direct, indirect, consequential or other loss (including claim for loss of profit) arising from any use of or reliance upon this document and/or further communication given in relation to this document.

Any valuations, opinions, estimates, forecasts, projections, ratings or risk assessments herein constitute a judgment as of the date of this document, and there can be no assurance that future results or events will be consistent with any such valuations, opinions, estimates, forecasts, projections, ratings or risk assessments. Any valuations, opinions, estimates, forecasts, projections, ratings or risk assessments described in this document were based upon a number of estimates and assumptions and are inherently subject to significant uncertainties or contingencies. It can be expected that one or more of the estimates on which the valuations, opinions, estimates, forecasts, projections, ratings or risk assessments were based will not materialize or will vary significantly from actual results. Therefore, the inclusion of the valuations, opinions, estimates, forecasts, projections, ratings or risk assessments described herein is not to be relied upon as a representation and/or warranty by KS (i) that such valuations, opinions, estimates, forecasts, projections, ratings or risk assessments or their underlying assumptions will be achieved, or (ii) that there is an assurance that future results or events will be consistent with any such valuations, opinions, estimates, forecasts, projections, ratings or risk assessments stated therein.

KS along with its affiliates and/or persons associated with it may from time to time have interests in the securities mentioned in this document. KS and its associates, their directors and/or employees may have positions in, and may effect transactions in securities mentioned herein and may also perform or seek to perform broking, investment banking, advisory and other securities services for companies mentioned in this document.

## Corporate Governance Report Disclaimer

The disclosure of the survey result of the Thai Institute of Directors Association (“IOD”) regarding corporate governance is made pursuant to the policy of the Office of the Securities and Exchange Commission. The survey of the IOD is based on the information of companies listed on the Stock Exchange of Thailand and the Market of Alternative Investment disclosed to the public and able to be accessed by a general public investor at The Thai Institute of Directors Association (IOD). The result, therefore, is from the perspective of a third party. It is not an evaluation of operation and is not based on inside information.

The survey result is as of the data appearing in the Corporate Governance Report of Thai Listed Companies. As a result, the survey result may be changed after that date. KS does not confirm nor certify the accuracy of such survey result.

Disclaimers: The information, statements, forecasts and projections contained herein, including any expression of opinion, are based upon sourced believed to be reliable but their accuracy completeness or correctness are not guaranteed. Expressions of opinion herein were arrived at after due and careful consideration and they were based upon the best information then known to us, and in our opinion are fair and reasonable in the circumstances prevailing at the time. Expressions of opinion contained herein are subject to change without notice. Kasikorn Securities Public Company Limited also may be the issuer of structured notes on the securities which are the constituents of SET50 index.



### Structured Notes and Derivative Warrants Disclaimer

KS may be the issuer of structured notes on these securities.

KS acts as market maker and issuer of Derivative Warrants ("DWs") on the underlying stocks listed below. Investors should carefully read the details of the DWs in the prospectus before making any investment decisions.

DWs Underlying: AAV, ADVANC, AMATA, AOT, AP, AWC, BAM, BANPU, BBL, BCH, BCP, BDMS, BEM, BGRIM, BH, BLA, BTS, CBG, CENTEL, CHG, CK, COM7, CPALL, CPF, CPN, CRC, DELTA, DOHOME, EA, EGCO, ESSO, FORTH, GLOBAL, GPSC, GULF, GUNKUL, HANA, HMPRO, INTUCH, IRPC, IVL, JMART, JMT, KCE, KEX, KKP, KTB, KTC, LH, MEGA, MINT, MTC, OR, OSP, PLANB, PSL, PTG, PTT, PTTEP, PTTGC, RATCH, RCL, SAWAD, SCB, SCC, SCGP, SET50, SINGER, SIRI, SJWD, SPALI, SPRC, STA, STGT, TCAP, THG, TIDLOR, TIPH, TISCO, TOP, TQM, TRUE, TTB, TU, VGI, WHA.



Disclaimers: The information, statements, forecasts and projections contained herein, including any expression of opinion, are based upon sourced believed to be reliable but their accuracy completeness or correctness are not guaranteed. Expressions of opinion herein were arrived at after due and careful consideration and they were based upon the best information then known to us, and in our opinion are fair and reasonable in the circumstances prevailing at the time. Expressions of opinion contained herein are subject to change without notice. Kasikorn Securities Public Company Limited also may be the issuer of structured notes on the securities which are the constituents of SET50 index.