

# TFEX Daily

31 มีนาคม 2566

## S50M23

แผนเทรด...ย่อ! รอรับกลับ”

## Gold spot

แผนเทรด.....ทยอยซื้อโซนรับ!

“แผนเทรด.....ชนด้าน เส้น EMA 200”

## S50M23

“ซัดขึ้นขึ้น...ชนด้าน เส้น EMA 200 วัน”

มุมมอง: ดัชนีขึ้นชนด้านเส้น EMA 200 วัน บริเวณ 970 จุด แล้วเริ่มย่อ เริ่มพักตัว

ขณะที่ RSI = 50 (ผ่านได้โครงสร้างจะกลับมาแข็งแกร่ง)

แผนเทรด... ผังซื้อแนวขนานไปก่อนแล้ว ปัจจุบันแนวรอซื้อกลับบริเวณโซนรับ

955-958 จุด ในทางตรงข้ามสถานะ:ขายแนวทยอยปิดบริเวณโซนด้าน

Note:เนื่องจากตลาด TFEX มีความผันผวนมาก หากขาดทุนมากกว่า 10%

ของพอร์ต แนะนำปิดสถานะ

“Bullish Pennant...พักตัว เตรียมขึ้น”

## Gold spot

จับสัญญาณเทรด...ทองคำ

มุมมอง: Gold spot แกว่งตัวอยู่ในกรอบแคบ ทรงกราฟพักตัว “Bullish Pennant”

แต่ อยู่บนทิศทางขาขึ้น ขณะที่เครื่องมือวัดโมเมนตัม RSI ส่งสัญญาณ

ชะลอตัวเช่นเดียวกัน แต่ยังมีเหนือ 50

แผนเทรด...แนวทยอยซื้อบริเวณโซนรับ \$1950/ออนซ์ ในทางตรงข้าม

สถานะขายแนว ทยอยปิดสถานะเนื่องจากความเสี่ยงการฟื้นตัว

Note:ปิดความเสี่ยงหากผลตอบแทนติดลบมากกว่า 10% ของพอร์ต

## วิกิจ ถาวรรัตน์

นักวิเคราะห์การลงทุนปัจจัยพื้นฐานด้านตลาดทุน/ปัจจัยทางเทคนิค

Wikij.tir@bualuang.co.th Tel. (662) 618-1336

S50M23: รับ 958 ด้าน 970

GFJ23: รับ 31,500 ด้าน 33,000

มุมมองทางเทคนิค โดย คุณธนรัตน์ อิศรกุล

นักวิเคราะห์การลงทุนปัจจัยพื้นฐานด้านหลักทรัพย์และปัจจัยทางเทคนิค

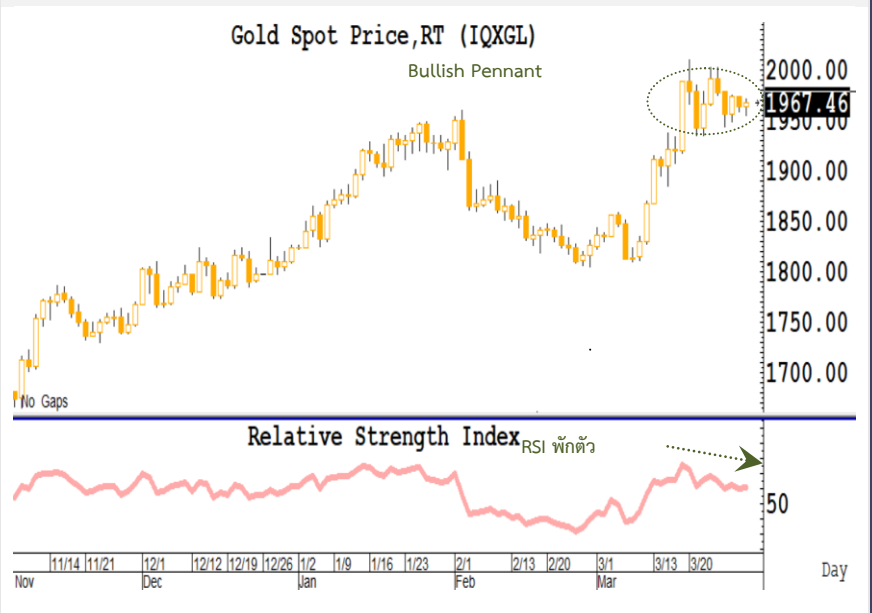
Thanarut@bualuang.co.th

Tel. (662) 618-1334

### SET50 Index Future



### Gold Spot



หลักทรัพย์	เปิด	สูงสุด	ต่ำสุด	ปิด	เฉลี่ย	ราคาที่ใช้ชำระ ราคา	เปลี่ยนแปลง	ปริมาณ (สัญญา)	สถานะคงค้าง (สัญญา)
SET50	971.15	975.04	964.65	969.55	970.10	N/A	-1.9	N/A	N/A
S50H23	973.00	973.50	966.6	968.50	969.70	968.42	-4.18	32,734	114,053
S50J23	973.8	973.80	964.1	964.50	967.00	964.50	-4.5	45	160
S50K23	967.7	967.70	963	964.00	965.10	964.00	-4.7	40	176
S50M23	967	967.30	961.6	963.50	963.80	963.90	-3.6	166,291	370,859
S50U23	963.9	964.00	959.3	960.80	961.10	960.90	-3.7	7,890	36,394
S50Z23	964.5	964.50	959.1	960.70	960.80	960.60	-3.6	2,958	19,773
S50H24	964.1	964.10	958	959.60	959.70	959.60	-4.5	537	500
<b>Total</b>								<b>210,495</b>	<b>541,915</b>

Source : SET Smart

#### Trading by Investor Type - SET50 Index Futures

##### 5 วันย้อนหลัง

วันที่	นักลงทุนต่างประเทศ			นักลงทุนสถาบัน			นักลงทุนภายในประเทศ			รวม	
	ซื้อ	ขาย	สุทธิ	ซื้อ	ขาย	สุทธิ	ซื้อ	ขาย	สุทธิ	ปริมาณ	สถานะคงค้าง
30/03/2023	82,555	80,245	2,310	36,795	35,074	1,721	91,145	95,176	-4,031	210,495	541,915
29/03/2023	196,471	190,653	5,818	38,646	39,390	-744	81,989	87,063	-5,074	317,106	698,516
28/03/2023	330,975	313,466	17,509	55,689	61,191	-5,502	73,650	85,657	-12,007	460,314	725,918
27/03/2023	223,750	222,991	759	34,934	34,598	336	73,397	74,492	-1,095	332,081	696,593
24/03/2023	136,991	137,148	-157	45,801	47,717	-1,916	100,759	98,686	2,073	283,551	631,571

##### 4 เดือนย้อนหลัง

วันที่	นักลงทุนต่างประเทศ			นักลงทุนสถาบัน			นักลงทุนภายในประเทศ			รวม	
	ซื้อ	ขาย	สุทธิ	ซื้อ	ขาย	สุทธิ	ซื้อ	ขาย	สุทธิ	ปริมาณ	สถานะคงค้าง
มี.ค. 2023	2,966,683	2,887,808	78,875	1,085,788	1,062,642	23,146	2,628,992	2,731,013	-102,021	6,681,463	541,915
ก.พ. 2023	1,468,424	1,592,263	-123,839	668,550	650,734	17,816	2,019,686	1,913,663	106,023	4,156,660	664,829
ม.ค. 2023	1,346,543	1,446,322	-99,779	678,348	675,116	3,232	1,994,379	1,897,832	96,547	4,019,270	673,734
ธ.ค. 2022	2,179,936	2,239,881	-59,945	738,467	749,419	-10,952	1,946,510	1,875,613	70,897	4,864,913	563,223

##### 4 ไตรมาสย้อนหลัง

วันที่	นักลงทุนต่างประเทศ			นักลงทุนสถาบัน			นักลงทุนภายในประเทศ			รวม	
	ซื้อ	ขาย	สุทธิ	ซื้อ	ขาย	สุทธิ	ซื้อ	ขาย	สุทธิ	ปริมาณ	สถานะคงค้าง
Q1/2023	5,781,650	5,926,393	-144,743	2,432,686	2,388,492	44,194	6,643,057	6,542,508	100,549	14,857,393	541,915
Q4/2022	5,773,579	5,666,820	106,759	2,433,982	2,462,801	-28,819	5,991,792	6,069,732	-77,940	14,199,353	563,223
Q3/2022	6,188,060	6,186,241	1,819	2,707,073	2,714,363	-7,290	6,950,031	6,944,560	5,471	15,845,164	495,136
Q2/2022	4,663,806	4,722,909	-59,103	2,045,996	2,038,871	7,125	5,380,581	5,328,603	51,978	12,090,383	414,186

Source : SET Smart

#### Metal Futures

หลักทรัพย์	เปิด	สูงสุด	ต่ำสุด	ปิด	เฉลี่ย	ราคาที่ใช้ชำระ ราคา	เปลี่ยนแปลง	ปริมาณ (สัญญา)	สถานะคงค้าง (สัญญา)
GOH23	1,966	1,973	1,959	1,970	1,966	1,968.10	0.2	7012	6,318
SVFH23	23	24	23	24	24	23.71	0.46	115	337
GF10J23	31,920	32,060	31,880	32,030	31,969	32,030.00	110	2163	4,943
GFJ23	32,020	32,020	32,020	32,020	32,020	32,020.00	110	2	236
GF10M23	32,000	32,120	31,960	32,100	32,045	32,090.00	100	1515	6,062
GFM23	32,070.00	32,080.00	32,070.00	32,070.00	32,073.00	32,070.00	50	3	223
GOM23	1,993	2,000	1,985	1,995	1,993	1,995.10	0.5	28773	15,273
SVFM23	24	24	24	24	24	23.95	0.24	213	886
GF10Q23	32,080	32,210	32,040	32,180	32,109	32,180.00	100	427	2,325
GFQ23	32,160.00	32,160.00	32,160.00	32,160.00	32,160.00	32,160.00	110	1	145
GOU23	2,008	2,021	2,008	2,020	2,014	2,019.70	34.6	1694	1,331
SVFU23	24	24	24	24	24	24.32	0.87	70	59

Source : SET Smart

#### Single Stock Futures

blssk	เปิด	สูงสุด	ต่ำสุด	ปิด	เฉลี่ย	ราคาที่ใช้ชำระ ราคา	เปลี่ยนแปลง	ปริมาณ (สัญญา)	สถานะคงค้าง (สัญญา)
AAVH23	2.82	2.82	2.63	2.80	2.74	2.83	0.03	2,804	1,456
ADVANCH23	212	212.48	211	212.00	211.87	211.10	-1.9	24	103
AEONTS23	182	182.00	182	182.00	182.00	181.06	-3.29	21	28
AMATAH23	22.3	22.50	22.27	22.41	22.31	22.21	-0.14	211	34
AOTH23	72	72.05	71.29	71.29	71.84	71.28	-0.57	216	138
APH23	12.3	12.30	12.1	12.10	12.17	12.09	-0.01	3	43
AWCH23	-	-	-	-	-	5.78	-0.02	-	134
BAH23	13.22	13.22	13.22	13.22	13.22	13.35	0.05	1	81
BAMH23	13.68	13.68	13.68	13.68	13.68	13.59	-0.12	1,250	754
BANPUH23	10.89	11.00	10.78	10.78	10.82	10.80	-0.2	4,943	1,180
BAYH23	-	-	-	-	-	29.23	-0.27	-	31
BBLH23	154.83	156.00	154.83	156.00	155.62	155.02	-0.69	56	126
BCHH23	20.2	20.20	20.2	20.20	20.20	20.37	0.27	3	66
BCPGH23	10	10.00	10	10.00	10.00	9.90	-0.1	801	318
BCPH23	31.75	32.00	31.75	32.00	31.89	31.55	-0.55	9	124
BDMH23	30.5	30.50	29.5	29.57	29.54	29.53	0.03	128	61
BEAUTYH23	-	-	-	-	-	1.23	-0.02	500	1,250
BECH23	9.29	9.29	8.84	8.84	8.95	8.65	-0.49	4	63
BEMH23	8.91	9.00	8.86	9.00	8.93	8.97	0.18	539	911
BGRIMH23	-	-	-	-	-	40.14	-0.61	300	417
BHH23	221.22	221.22	220.01	220.01	220.56	221.01	-0.99	164	24
BJCH23	38.26	38.26	37.85	37.85	38.17	38.25	-	9	31
BLAH23	28.75	28.75	28.75	28.75	28.75	28.50	-	4	82
BLANDH23	0.97	0.99	0.9	0.99	0.95	0.97	-0.03	2,507	3,145
BPPH23	-	-	-	-	-	15.95	0.05	-	69
BTSH23	7.24	7.24	6.81	6.82	6.92	7.02	-0.13	3,074	438
CBGH23	97.5	97.50	96.5	96.50	97.17	97.20	-0.5	126	132
CENTELH23	56.3	56.81	56.3	56.71	56.61	56.60	0.35	303	153
CHGH23	-	-	-	-	-	3.62	0.02	1,500	98
CKH23	-	-	-	-	-	20.63	0.06	-	242
CKPH23	4.18	4.18	4.12	4.12	4.13	4.08	-0.1	2,040	314
COM7H23	31	31.01	30.5	31.01	30.86	30.48	-0.77	613	1,358
CPALLH23	63.16	63.16	62.5	62.75	62.84	62.26	-0.43	444	296
CPFH23	21.8	21.80	21.5	21.50	21.62	21.44	-0.46	716	783
CPNH23	69	69.00	67.27	68.95	68.70	68.01	-0.99	13	17
CRCH23	44.5	44.50	44.39	44.39	44.45	43.93	-1.07	2	27
DELTAH23	1007.01	1,099.00	1000	1,099.00	1,053.25	1,092.91	85.55	531	795
DTACH23X	-	-	-	-	-	8.25	-0.25	400	1,441
EAH23	75.75	75.99	75.25	75.25	75.61	74.68	-1.31	492	350
EASTWH23	4.95	4.95	4.95	4.95	4.95	4.95	-0.01	3	-
EGCOH23	155	155.00	155	155.00	155.00	155.37	-2.13	41	104
EPGH23	-	-	-	-	-	8.01	-0.22	1,000	31
ERWH23	-	-	-	-	-	4.90	-0.04	-	39
ESSOH23	8.95	8.95	8.94	8.94	8.95	8.80	-0.15	7,519	256
GFP23	-	-	-	-	-	11.40	-	550	205
GLOBALH23X	18.6	18.60	18.6	18.60	18.60	18.54	-0.26	101	11
GPSCH23	69	69.39	68.75	68.75	68.87	68.40	-0.6	389	116
GULFH23	53	53.01	52.75	52.75	52.96	52.93	-0.18	2,137	105
GUNKULH23	3.95	3.95	3.82	3.82	3.88	3.92	-0.03	2,131	1,407
HANAH23	51.86	52.55	49.78	49.78	51.45	50.41	-0.59	30	135
HMPROH23	14.41	14.41	14.34	14.34	14.39	14.20	-0.32	431	156
ICHIH23	-	-	-	-	-	13.12	-0.28	300	24
INTUCHH23X	73.5	73.50	73.5	73.50	73.50	73.39	-0.85	2	26
IRPCH23	2.62	2.64	2.62	2.64	2.62	2.62	-0.06	1,673	2,074
ITDH23	1.64	1.64	1.63	1.64	1.64	1.63	-	108	922
IVLH23	35.06	35.25	34.31	34.31	34.88	34.75	-1	1,221	192
JASH23	2.1	2.11	2.1	2.11	2.10	2.10	-	2,527	415

blssk	เปิด	สูงสุด	ต่ำสุด	ปิด	เฉลี่ย	ราคาที่ใช้ชำระ ราคา	เปลี่ยนแปลง	ปริมาณ (สัญญา)	สถานะคงค้าง (สัญญา)
JMTH23	47.25	47.25	47.25	47.25	47.25	46.23	-1.45	102	199
KBANKH23	134.7	135.20	133.1	133.28	134.71	133.60	-1.1	519	361
KCEH23	46.5	47.25	45.88	45.90	46.81	46.33	0.23	572	682
KEXH23	16.21	16.21	15.2	15.80	15.80	15.75	-0.24	404	251
KKPH23	65	65.00	64.76	64.76	64.88	64.51	-0.49	104	75
KTBH23	16.9	16.90	16.65	16.65	16.76	16.68	-0.24	774	655
KTCH23	54.52	54.52	54.3	54.30	54.42	54.02	-0.54	3	154
LHH23	9.75	9.75	9.75	9.75	9.75	9.78	0.03	1	73
LPNH23	-	-	-	-	-	4.70	-0.1	-	610
MAJORH23	16.65	16.65	16.58	16.58	16.63	16.68	-0.32	1,057	60
MBKH23	16.15	16.15	16.15	16.15	16.15	16.10	-0.2	217	147
MEGAH23	-	-	-	-	-	42.01	-0.99	-	75
MH23	51.35	51.35	51.35	51.35	51.35	51.01	0.01	61	23
MINTH23	32	32.40	31.5	31.50	32.09	31.75	-0.41	11	583
MTCH23	34.25	34.25	33.56	33.58	34.07	34.27	-0.16	507	260
ORH23	21.01	21.19	20.97	21.00	21.06	20.95	-0.16	719	734
ORIH23	11.82	11.82	11.57	11.57	11.79	11.74	-0.06	551	56
OSPH23	-	-	-	-	-	30.75	-0.25	100	784
PLANBH23	8.7	8.70	8.7	8.70	8.70	8.73	-0.12	507	95
PRMH23	-	-	-	-	-	7.28	0.03	-	133
PSHH23	-	-	-	-	-	12.53	-0.27	200	134
PSLH23	13.9	13.90	13.8	13.90	13.88	13.80	-0.15	13	123
PTGH23	14.2	14.30	14.1	14.30	14.18	14.10	-0.1	1,034	114
PTTEPH23	152.5	152.60	151.35	152.60	152.28	151.63	-2.37	102	145
PTTGCH23	46.6	46.64	46	46.01	46.04	46.14	-0.85	133	698
PTTH23	31.5	31.60	31.5	31.50	31.50	31.37	-0.33	520	1,396
QHH23	2.43	2.43	2.38	2.38	2.39	2.38	-0.04	7	431
RATCHH23X	-	-	-	-	-	38.51	-0.79	1,140	370
RSH23	15.45	15.45	15.45	15.45	15.45	15.35	-0.05	6,677	49
SAMARTH23	4.24	4.24	4.19	4.19	4.22	4.17	-0.19	586	512
SAWADH23	52.8	52.80	52	52.00	52.45	52.09	-0.71	11	50
SCBBH23	-	-	-	-	-	102.32	-1.17	60	5
SCBH23	103.05	103.25	103.05	103.06	103.15	102.32	-1.18	264	246
SCCH23	318	318.00	317	317.00	317.67	315.41	-5.58	323	45
SCGPH23	47.5	47.70	47	47.00	47.40	46.51	-1.69	1,308	232
SGPH23	-	-	-	-	-	9.10	-0.05	-	46
SH23	-	-	-	-	-	1.74	-0.01	-	41
SIRIH23	1.72	1.73	1.72	1.72	1.72	1.72	0.01	3,780	770
SPALIH23	-	-	-	-	-	22.40	-	100	78
SPCGH23	-	-	-	-	-	13.69	-0.01	-	17
SPRCH23	11	11.00	11	11.00	11.00	10.99	-0.01	1	63
STAH23	22.7	22.80	22.6	22.70	22.71	22.59	0.06	52	97
STECH23	12.69	12.88	12.65	12.70	12.80	12.90	0.36	337	1,263
STGTH23	10.5	10.50	10.4	10.40	10.46	10.34	-0.16	618	672
STPIH23	4.08	4.08	4.08	4.08	4.08	4.02	-0.16	52	238
SUPERH23	0.58	0.63	0.57	0.63	0.59	0.62	0.05	5,603	1,440
TASCOH23	19.3	19.40	19.2	19.40	19.30	19.14	-0.06	113	338
TCAPH23	45.3	45.55	45.3	45.55	45.35	45.90	0.41	5	12
THAIH23	-	-	-	-	-	3.32	-0.01	-	-
THANIH23	-	-	-	-	-	3.65	-0.11	500	138
THCOMH23	14.52	14.52	14.19	14.19	14.35	14.21	-0.24	32	250
THGH23	67.7	67.70	67.2	67.20	67.50	67.98	-1.02	3	11
TISCOH23	101.5	101.50	101.5	101.50	101.50	101.02	-0.92	3	58
TKNH23	9.9	9.95	9.9	9.95	9.90	9.83	-0.02	2,018	367
TOAH23	-	-	-	-	-	31.49	-0.01	100	9
TOPH23	52.95	53.00	52.8	52.80	52.92	53.00	-1.06	23	59
TPIPLH23	-	-	-	-	-	1.59	-	-	460
TPIPPH23	-	-	-	-	-	3.38	-0.02	500	530
TQMH23	33.25	33.50	33.25	33.50	33.40	33.16	-0.84	280	45

blssk	เปิด	สูงสุด	ต่ำสุด	ปิด	เฉลี่ย	ราคาที่ใช้ชำระ ราคา	เปลี่ยนแปลง	ปริมาณ (สัญญา)	สถานะคงค้าง (สัญญา)
TRUEEH23X	8.41	8.41	8.32	8.32	8.41	8.25	-0.21	7,021	5,725
TRUEH23	8.46	8.46	8.42	8.42	8.44	8.25	-0.21	7	999
TTAH23	7.83	7.94	7.67	7.94	7.82	7.94	0.04	529	180
TTBH23	1.44	1.44	1.41	1.42	1.42	1.45	0.01	1,076	993
TTCLH23	-	-	-	-	-	4.51	0.01	-	24
TTWH23	8.7	8.70	8.7	8.70	8.70	8.67	-0.08	5	172
TUH23	14.6	14.60	14.41	14.41	14.49	14.34	-0.26	629	886
TVOH23X	-	-	-	-	-	26.55	-0.2	100	47
UNIQH23	3.8	3.80	3.8	3.80	3.80	3.80	-0.02	1	82
VGIH23	3.78	3.88	3.75	3.88	3.79	3.94	0.02	37	1,030
VNGH23	5	5.00	5	5.00	5.00	4.98	-0.07	1	80
<b>Total</b>								<b>88,755</b>	<b>52,178</b>

Source : SET Smart

## Bualuang Securities Public Company Limited

## DISCLAIMER

BUALUANG SECURITIES PUBLIC COMPANY LIMITED (BLS) is a subsidiary of BANGKOK BANK PUBLIC COMPANY LIMITED (BBL). This document is produced based upon sources believed to be reliable but their accuracy, completeness or correctness is not guaranteed. The statements or expressions of opinion herein were arrived at after due and careful consideration to use as information for investment. Expressions of opinion contained herein are subject to change without notice. This document is not, and should not be construed as, an offer or the solicitation of an offer to buy or sell any securities. The use of any information shall be at the sole discretion and risk of the user.

BUALUANG SECURITIES PUBLIC COMPANY LIMITED MAY BE IN RELATIONSHIP WITH THE SECURITIES IN THIS REPORT. "Opinions, projections and other information contained in this report are based upon sources believed to be accurate including the draft prospectus, but no responsibility is accepted for any loss occasioned by reliance placed upon the contents hereof. Bualuang Securities Public Company Limited may from time to time perform investment, advisory or other services for companies mentioned in this report, as well as dealing (as principal or otherwise) in, or otherwise being interested in, any securities mentioned herein, This report does not constitute a solicitation to buy or sell any securities". Investors should carefully read details in the prospectus before making investment decision.






BUALUANG SECURITIES PUBLIC COMPANY LIMITED MAY ACT AS MARKET MAKER AND ISSUER OF DWs, AND ISSUER OF STRUCTURED NOTES ON THESE SECURITIES. The company may prepare the research reports on those underlying securities. Investors should carefully read the details of the derivative warrants and structured notes in the prospectus before making investment decisions.

ADVANC	AMATA	AOT	BDMS	BH	CBG	CENTEL	CPALL	GLOBAL	GPSC	IRPC	KBANK	KCE	KTC	MINT
PTG	PTT	PTTEP	PTTGC	SCB	SFRG	TOP	WHA	ESSO	STA	BGRIM	GULF	MTC	AWC	CRC
CPF	CPN	HANA	HMPRO	IVL	OSP	SAWAD	BANPU	BCH	BTS	CK	SCC	STEC	TISCO	TU
INTUCH	RATCH	VGI	SCGP	COM7	DOHOME	JMT	CHG	TTB	BAM	BCP	AP	KTB	KKP	OR
BEM	GUNKUL	EA	SPALI	RBF	STGT	MEGA	JMART	BEC	SYNEX	BLA	KEX	RCL	SINGER	STARK
TIDLOR	FORTH	TIPH	AAV	DELTA	BCPG	SABUY	THG	CKP	TRUE	PSL				

BUALUANG SECURITIES PUBLIC COMPANY LIMITED IS OR MAY BE AN UNDERWRITER/CO-UNDERWRITER/JOINT LEAD IN RESPECT OF THE INITIAL PUBLIC OFFERING (IPO) OF SECURITIES.

Financial Advisor	Lead underwriter/ Underwriter/ Co-underwriter

### CG Rating

Score Range	Score Range	Description
90 – 100		Excellent
80 – 89		Very Good
70 – 79		Good
60 – 69		Satisfactory
50 – 00359		Pass
Less than 50	No logo given	-

### Thailand's Private Sector Collective Action Coalition Against Corruption programme (Thai CAC) under Thai Institute of Directors

- companies that have **declared** their intention to join CAC, and
- companies **certified** by CAC.

This research report was prepared by Bualuang Securities Public Company Limited and refers to research prepared by Morgan Stanley. Morgan Stanley does not warrant or guarantee the accuracy or completeness of its research reports. Morgan Stanley reserves copyright and other proprietary rights in the material reproduced in this report. Morgan Stanley is under no obligation to inform Bualuang Securities or you if the views or information referred to or reproduced in this research report change.

#### Corporate Governance Report disclaimer

The disclosure of the survey result of the Thai Institute of Directors Association (IOD) regarding corporate governance is made pursuant to the policy of the Office of the Securities and Exchange Commission. The IOD survey is based on the information of a company listed on the Stock Exchange of Thailand and the Market for Alternative Investment disclosed to the public and able to be accessed by a general public investor. The result, therefore, is from the perspective of a third party. It is not an evaluation of operation and is not based on inside information.

The survey result is as of the date appearing in the Corporate Governance Report of Thai Listed Companies. As a result, the survey result may be changed after that date. Bualuang Securities Public Company Limited neither confirms nor certifies the accuracy of such survey results.

“Disclaimer: The disclosure of the Anti-Corruption Progress Indicators of a listed company on the Stock Exchange of Thailand, which is assessed by the relevant institution as disclosed by the Office of the Securities and Exchange Commission, is made in order to comply with the policy and sustainable development plan for the listed companies. The relevant institution made this assessment based on the information received from the listed company, as stipulated in the form for the assessment of Anti-corruption which refers to the Annual Registration Statement (Form 56-1), Annual Report (Form 56-2), or other relevant documents or reports of such listed company. The assessment result is therefore made from the perspective of a third party. It is not an assessment of operation and is not based on any inside information. Since this assessment is only the assessment result as of the date appearing in the assessment result, it may be changed after that date or when there is any change to the relevant information. Nevertheless, Bualuang Securities Public Company Limited neither confirms, verifies, nor certifies the accuracy and completeness of the assessment result.”

### BUALUANG RESEARCH – RECOMMENDATION FRAMEWORK

#### STOCK RECOMMENDATIONS

**BUY:** Expected positive total returns of 15% or more over the next 12 months.

**HOLD:** Expected total returns of between -15% and +15% over the next 12 months.

**SELL:** Expected negative total returns of 15% or more over the next 12 months.

**TRADING BUY:** Expected positive total returns of 15% or more over the next 3 months.

#### SECTOR RECOMMENDATIONS

**OVERWEIGHT:** The industry, as defined by the analyst's coverage universe, is expected to outperform the relevant primary market index over the next 12 months.

**NEUTRAL:** The industry, as defined by the analyst's coverage universe, is expected to perform in line with the relevant primary market index over the next 12 months.

**UNDERWEIGHT:** The industry, as defined by the analyst's coverage universe, is expected to underperform the relevant primary market index over the next 12 months.

## IMPORTANT DISCLOSURES FOR U.S. PERSONS

This research report was prepared by Bualuang Securities Public Company Limited (“BLS”). BLS is not a registered broker-dealer in the United States and, therefore, is not subject to U.S. rules regarding the preparation of research reports and the independence of research analysts. This research report is provided for distribution to “major U.S. institutional investors” in reliance on the exemption from registration provided by Rule 15a-6 of the U.S. Securities Exchange Act of 1934, as amended (the “Exchange Act”).

Under no circumstances should any recipient of this research report effect any transaction to buy or sell securities or related financial instruments through BLS. Rosenblatt Securities Inc. accepts responsibility for the contents of this research report, subject to the terms set out below, to the extent that it is delivered to a U.S. person other than a major U.S. institutional investor.

The analyst whose name appears in this research report is not registered or qualified as a research analyst with the Financial Industry Regulatory Authority (“FINRA”) and may not be an associated person of Rosenblatt Securities Inc. and, therefore, may not be subject to applicable restrictions under FINRA Rules on communications with a subject company, public appearances and trading securities held by a research analyst account.

## Additional Disclosures

This research report is for distribution only under such circumstances as may be permitted by applicable law. This research report has no regard to the specific investment objectives, financial situation or particular needs of any specific recipient, even if sent only to a single recipient. This research report is not guaranteed to be a complete statement or summary of any securities, markets, reports or developments referred to in this research report. Neither BLS nor any of its directors, officers, employees or agents shall have any liability, however arising, for any error, inaccuracy or incompleteness of fact or opinion in this research report or lack of care in this research report’s preparation or publication, or any losses or damages which may arise from the use of this research report.

BLS may rely on information barriers, such as “Chinese Walls” to control the flow of information within the areas, units, divisions, groups, or affiliates of BLS.

Investing in any non-U.S. securities or related financial instruments (including ADRs) discussed in this research report may present certain risks. The securities of non-U.S. issuers may not be registered with, or be subject to the regulations of, the U.S. Securities and Exchange Commission. Information on such non-U.S. securities or related financial instruments may be limited. Foreign companies may not be subject to audit and reporting standards and regulatory requirements comparable to those in effect within the United States.

The value of any investment or income from any securities or related financial instruments discussed in this research report denominated in a currency other than U.S. dollars is subject to exchange rate fluctuations that may have a positive or adverse effect on the value of or income from such securities or related financial instruments.

Past performance is not necessarily a guide to future performance and no representation or warranty, express or implied, is made by BLS with respect to future performance. Income from investments may fluctuate. The price or value of the investments to which this research report relates, either directly or indirectly, may fall or rise against the interest of investors. Any recommendation or opinion contained in this research report may become outdated as a consequence of changes in the environment in which the issuer of the securities under analysis operates, in addition to changes in the estimates and forecasts, assumptions and valuation methodology used herein.

No part of the content of this research report may be copied, forwarded or duplicated in any form or by any means without the prior consent of BLS and BLS accepts no liability whatsoever for the actions of third parties in this respect.